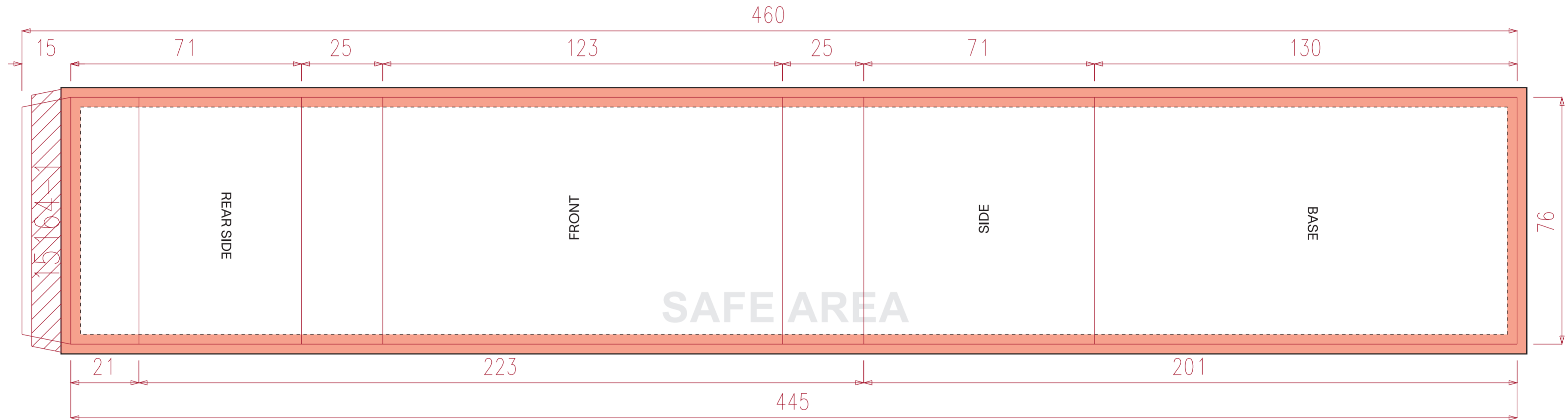


Indicates Print & Varnish Free Areas

Do Not Flip or Alter Drawing



466 x 82mm
(including bleed)



Safe area
Please place all readable content inside the safe area. Do not exceed the dotted parameter.



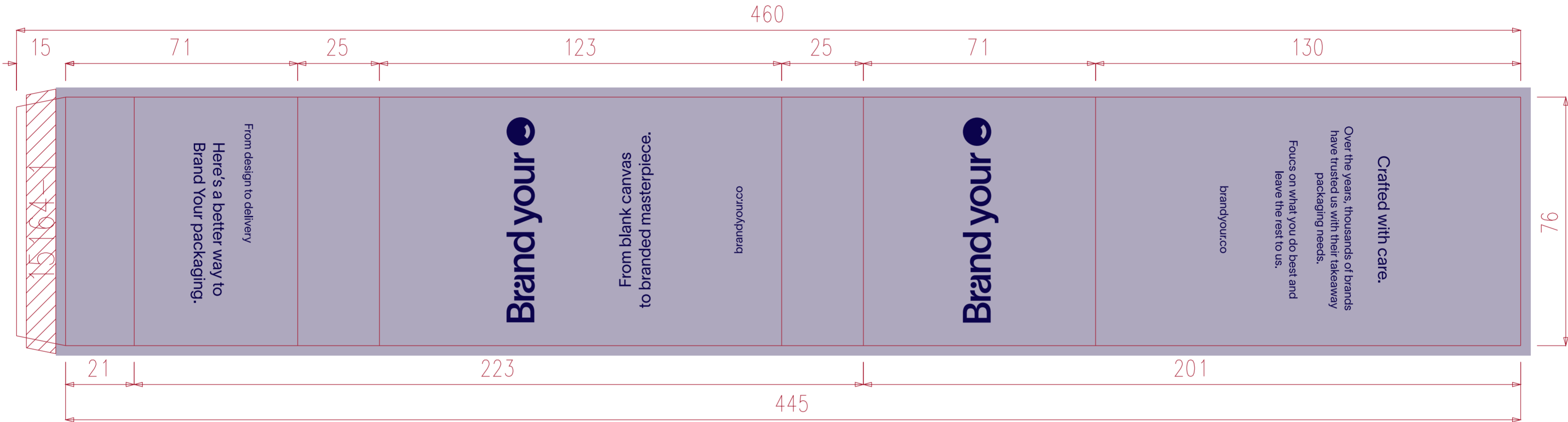
Danger area
This area is not suitable for important content. Only use this space for backgrounds and extended imagery.






3mm Bleed
If you are using background colours or extended imagery, please give 3mm bleed. This is to the solid parameter.

1. Create artwork on the 'Artwork' Layer in CMYK mode only. Do not modify the 'Cutter' layer.
2. Keep critical artwork (images, logos, copy or text) within white 'safe' area.
3. Ensure any background colours extend to outer edge of the bleed (indicated by black line).
4. All linked images must be converted to CMYK before placing into template.
5. All linked images used on this template must have a minimum resolution of 300dpi.
6. All fonts must be converted to outlines - Keep an editable copy for yourself for future files.
7. All colours must be process CMYK. Please convert any pantones prior to submitting.
8. Save artwork using Adobe PDF preset PDF/X-1a:2001 with 3mm bleed.

Example Artwork



466 x 82mm
(including bleed)

- 
Safe area
 Please place all readable content inside the safe area. Do not exceed the dotted parameter.
- 
Danger area
 This area is not suitable for important content. Only use this space for backgrounds and extended imagery.
- 
3mm Bleed
 If you are using background colours or extended imagery, please give 3mm bleed. This is to the solid parameter.

1. Create artwork on the 'Artwork' Layer in CMYK mode only. Do not modify the 'Cutter' layer.
2. Keep critical artwork (images, logos, copy or text) within white 'safe' area.
3. Ensure any background colours extend to outer edge of the bleed (indicated by black line).
4. All linked images must be converted to CMYK before placing into template.
5. All linked images used on this template must have a minimum resolution of 300dpi.
6. All fonts must be converted to outlines - Keep an editable copy for yourself for future files.
7. All colours must be process CMYK. Please convert any pantones prior to submitting.
8. Save artwork using Adobe PDF preset PDF/X-1a:2001 with 3mm bleed.