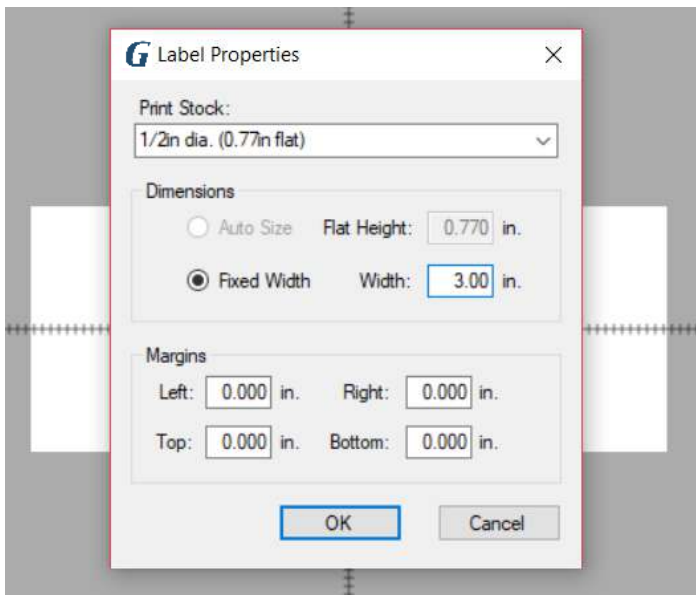
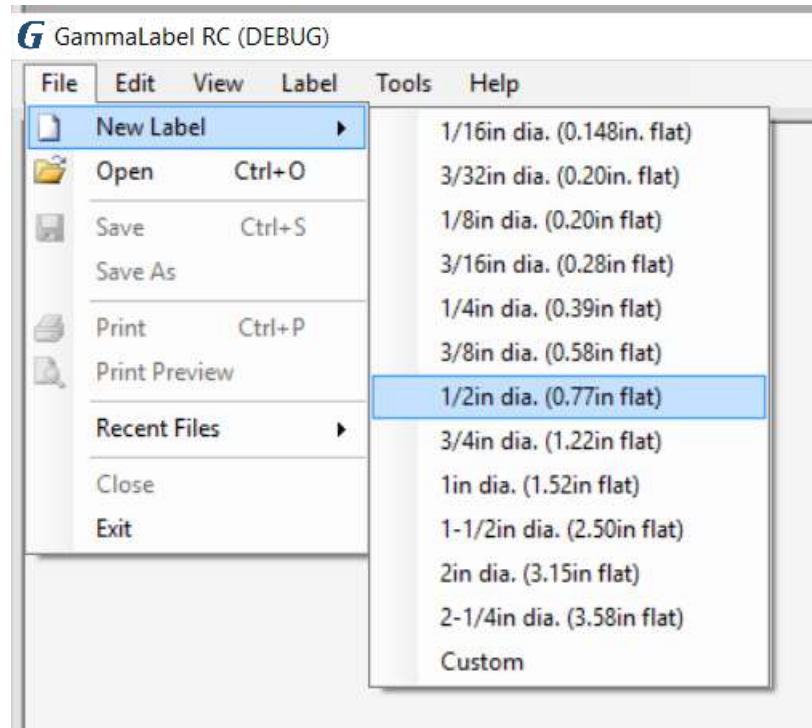
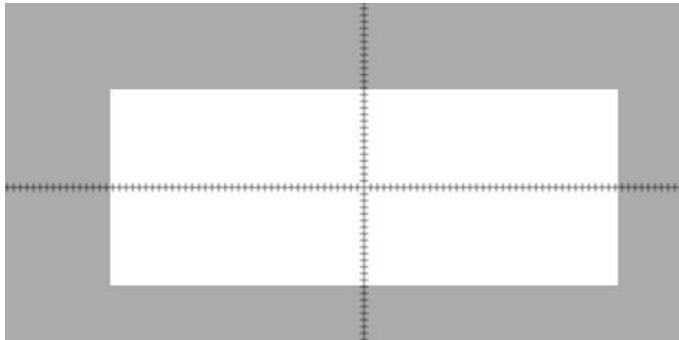


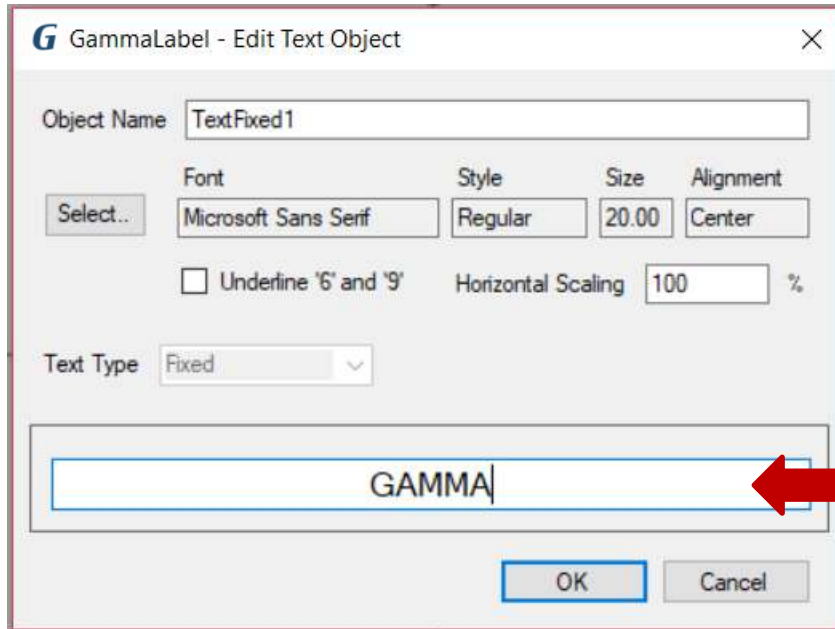
HOW TO CREATE A LABEL

1. Open your Gamma Label.
2. Click on File → New Label → Choose the size or create a custom size



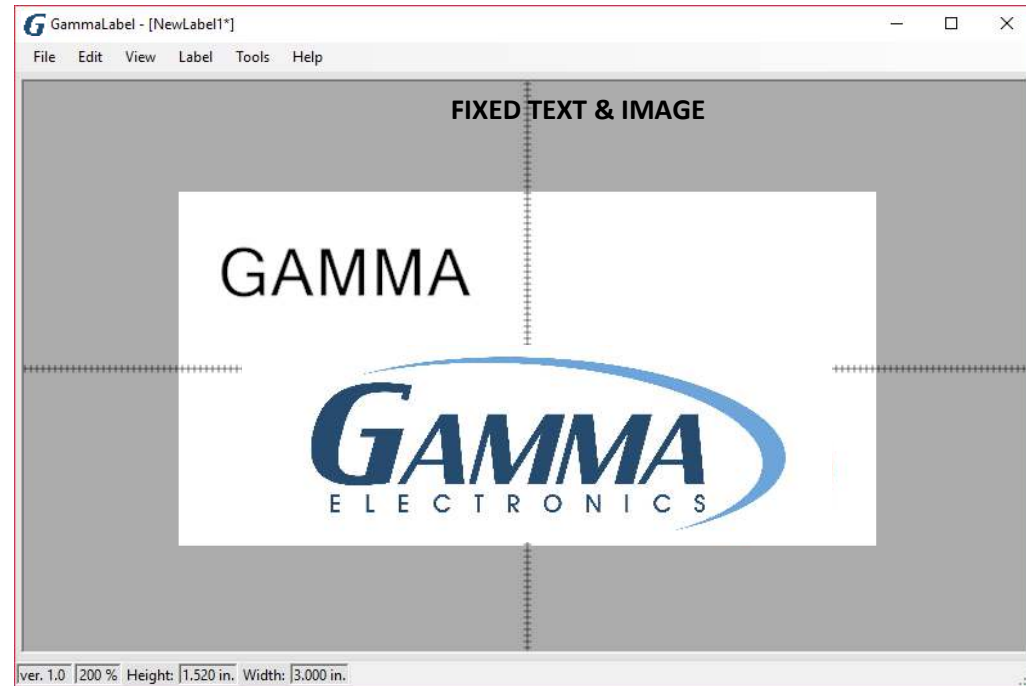
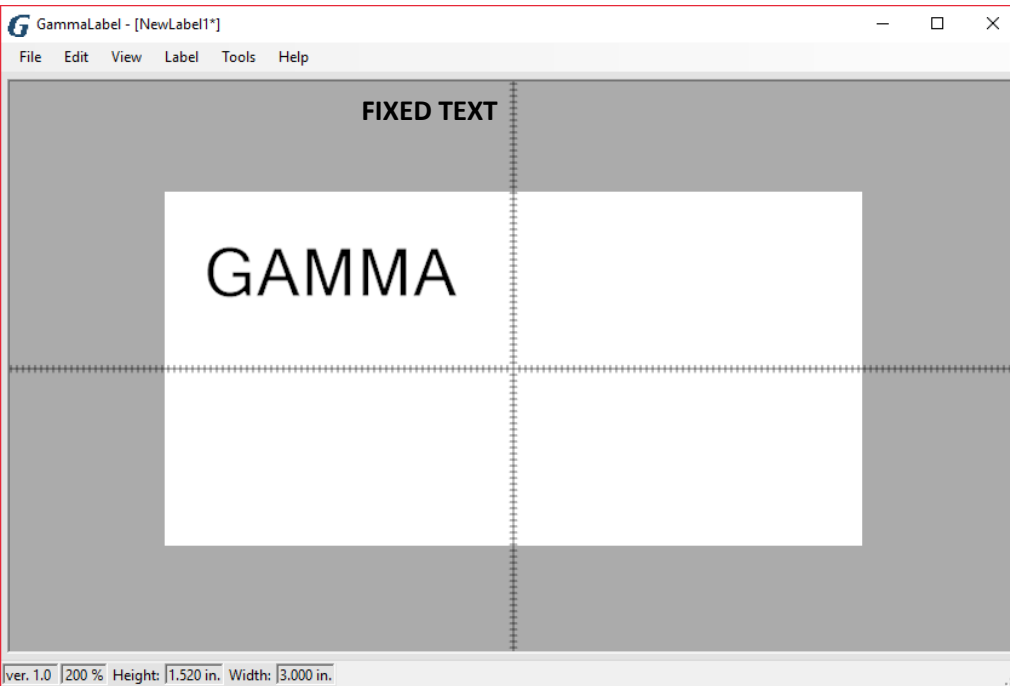
3. Click on Label → Properties

4. Change the width (Length) of label via Fixed Width tab varies from .25" to several inches long.



ADD FIXED TEXT & IMAGE

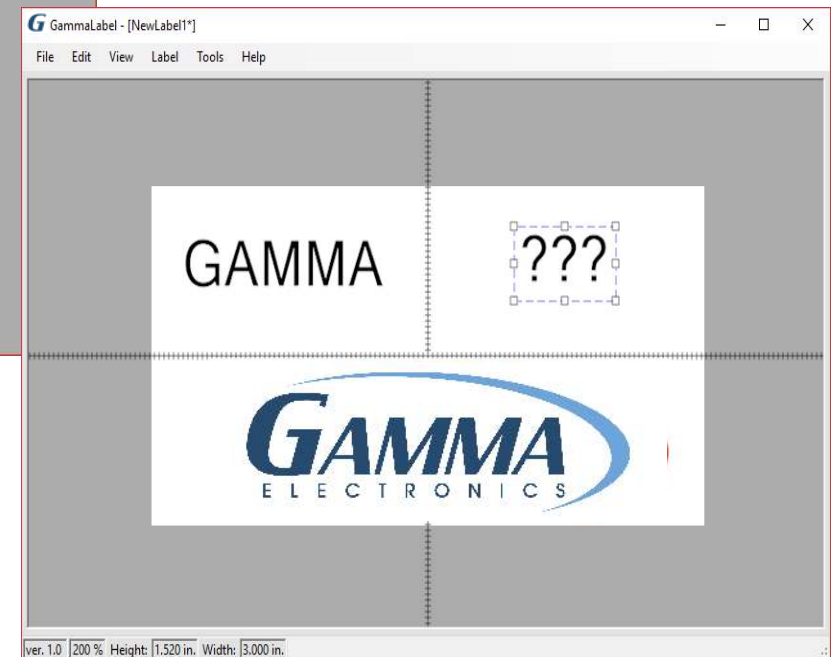
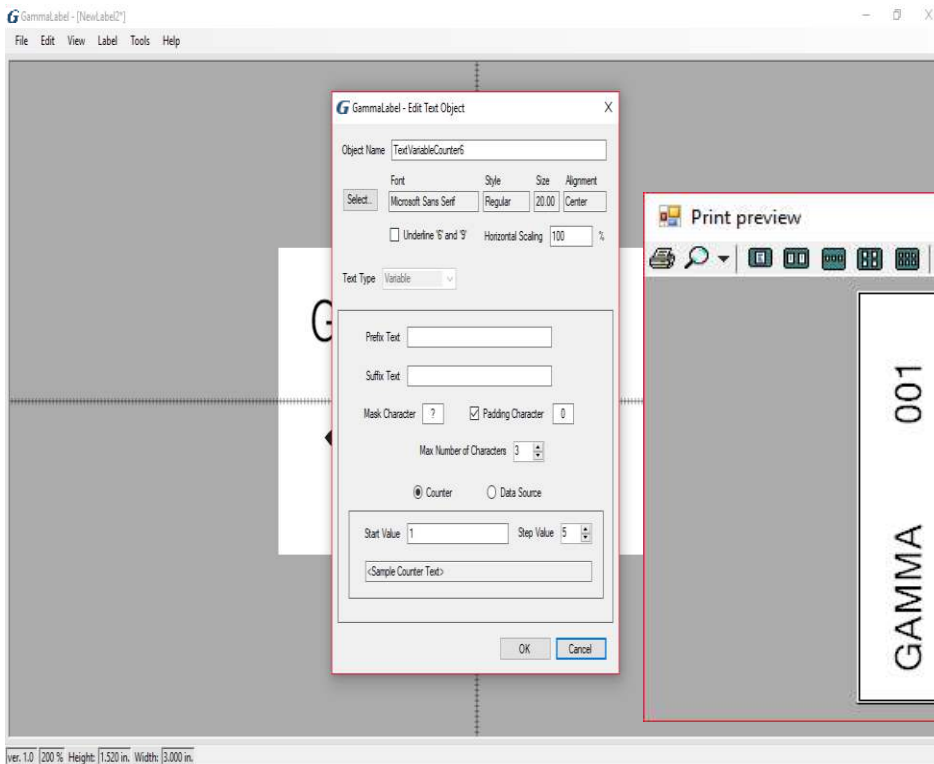
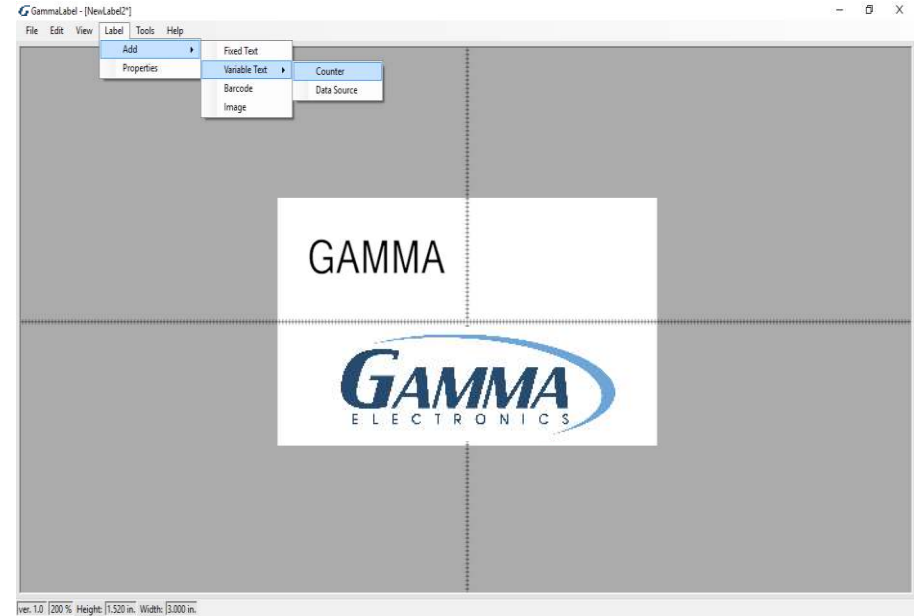
1. Label → Add → Fixed Text or Image
 - A. Change font style, size & alignment
2. Change Text
3. Click OK
4. Place your fixed text on you label



ADD COUNTER & THE USE OF UNDERLINE 6 & 9

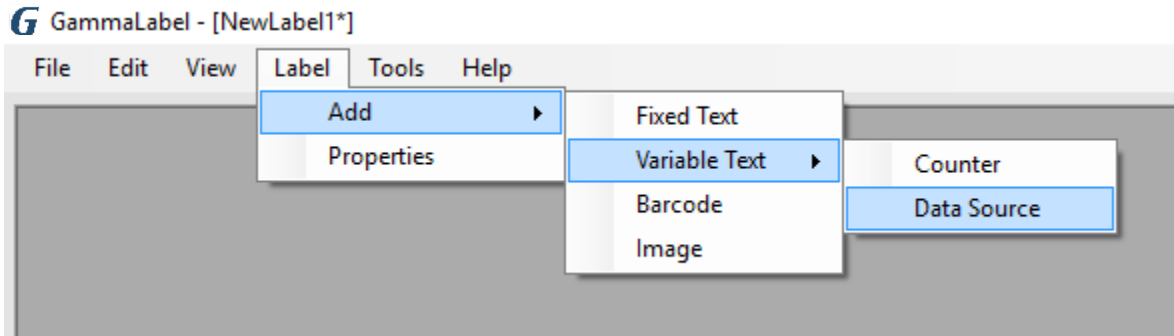
Label → Add → Variable Text → Counter

1. Check mark to underline 6 & 9 if needed
2. Add a prefix or suffix
3. Mask character could be change to 0 or keep as ?
4. Padding Character could be changed to any character
 - A. Please see print preview below with 001
5. Increase the max number of characters
6. Start value 0 or 001
7. Step value from 1 to 5
8. Click OK

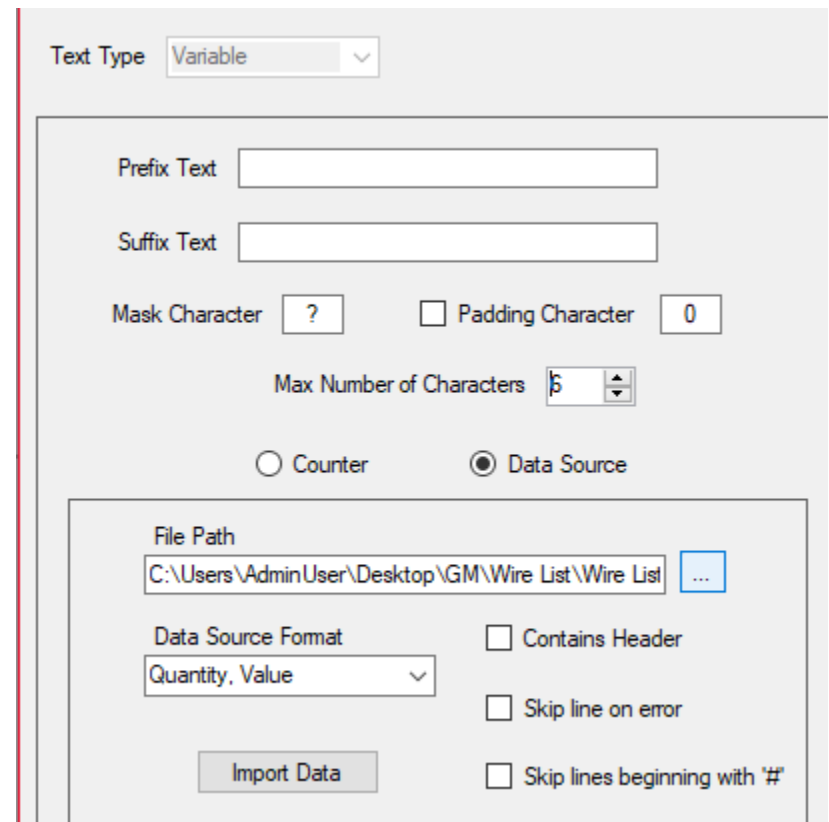


IMPORTING VARIABLE LABEL LIST FROM EXCEL/CSV

1. First convert excel to a CSV file
2. Open new label
3. Click on Add → Variable Text → Data Source

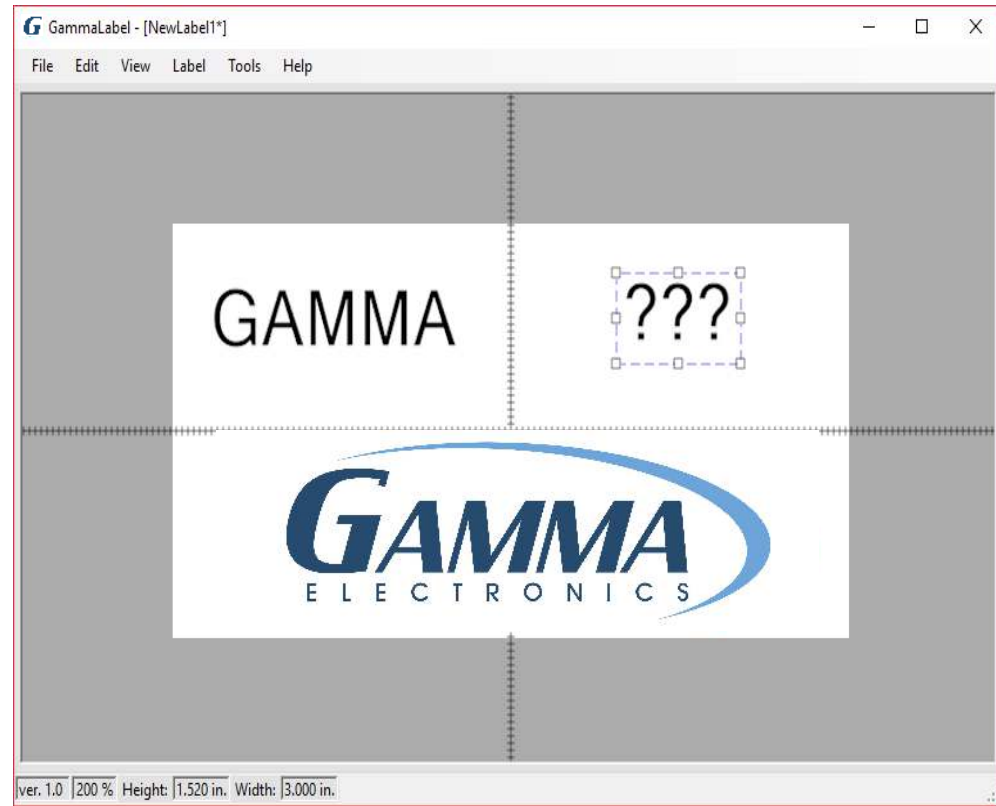
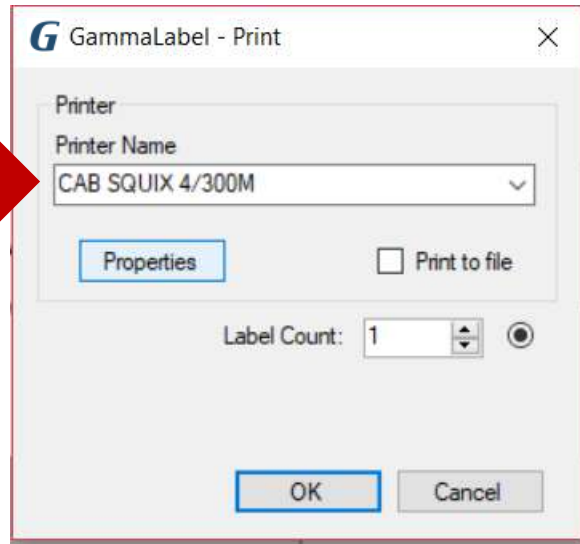


4. Add or remove prefix or suffix
5. Indicate the max number of characters you want
6. Check data source
7. Choose to import quantity column and data (QT/VALUE) or just data (VALUE, VALUE, VALUE)
8. Import data and click OK
9. Place text box where you want to on label

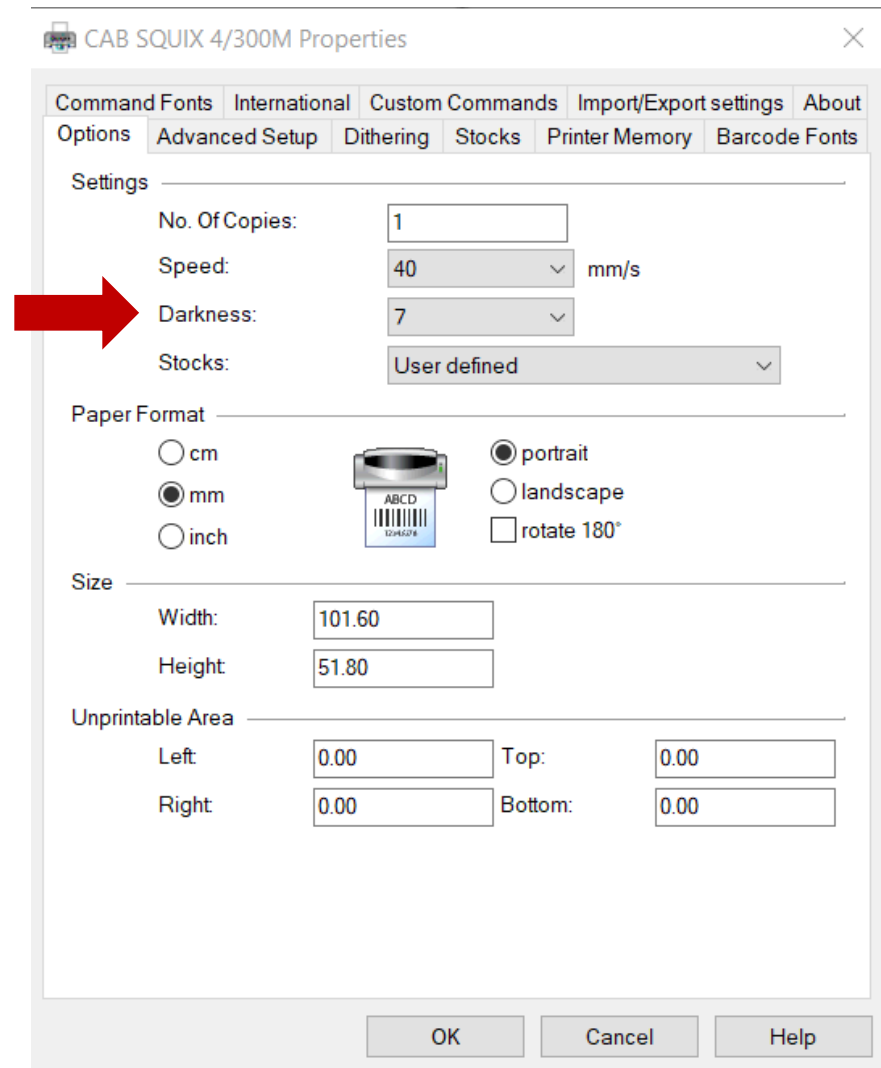
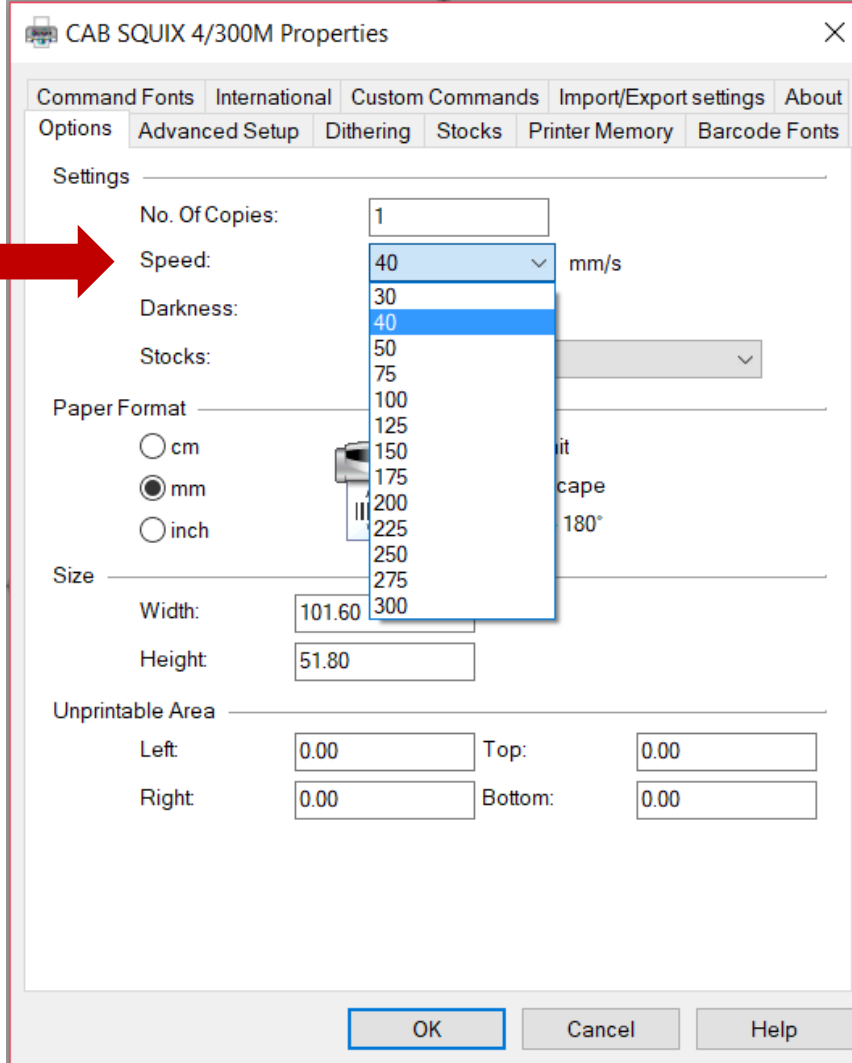


CONTROLLING PRINT SPEED, DARKNESS & CUT FUNCTIONS

1. After label is complete as shown (2D Logos work best)
2. Got to file and click on PRINT
3. PRINT tab pops up and click on PROPERTIES



4. Choose what speed to print. Optimal speeds include 30mm per second to 100mm per second
5. Set Darkness to 7 or 8.



6. Click on ADVANCED SET UP
7. Make sure continuous is chosen
8. Choose cutter setting, every is standard
9. If you are perforating, cutter is set to never and perforate after every label should also be selected
10. Perforation depth should be 1-5. Typical is 3
11. Settings will persist from label to label.
12. Click OK
13. Next choose label count and click OK

