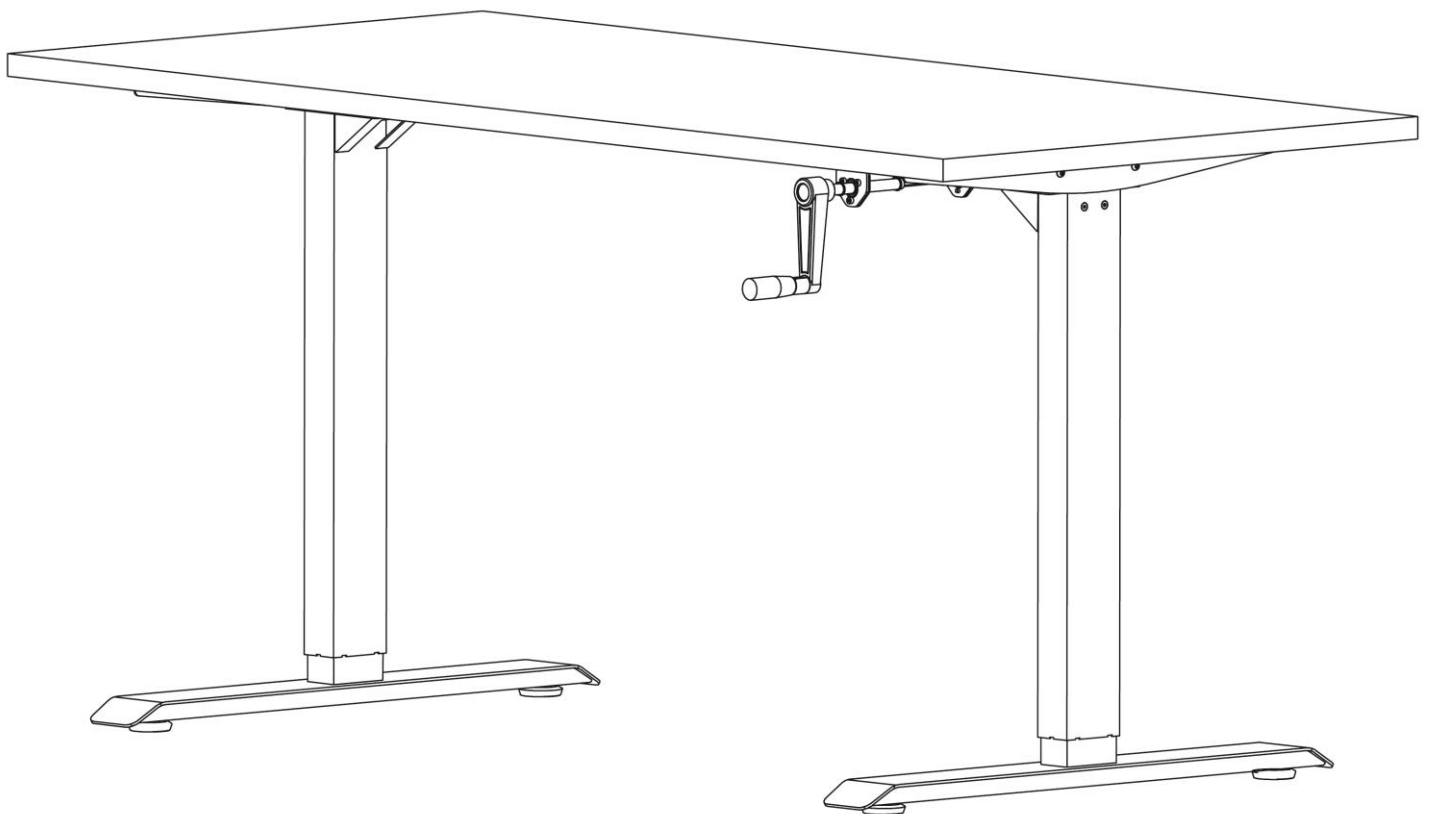




MANUAL CRANK HEIGHT ADJUSTABLE TABLE

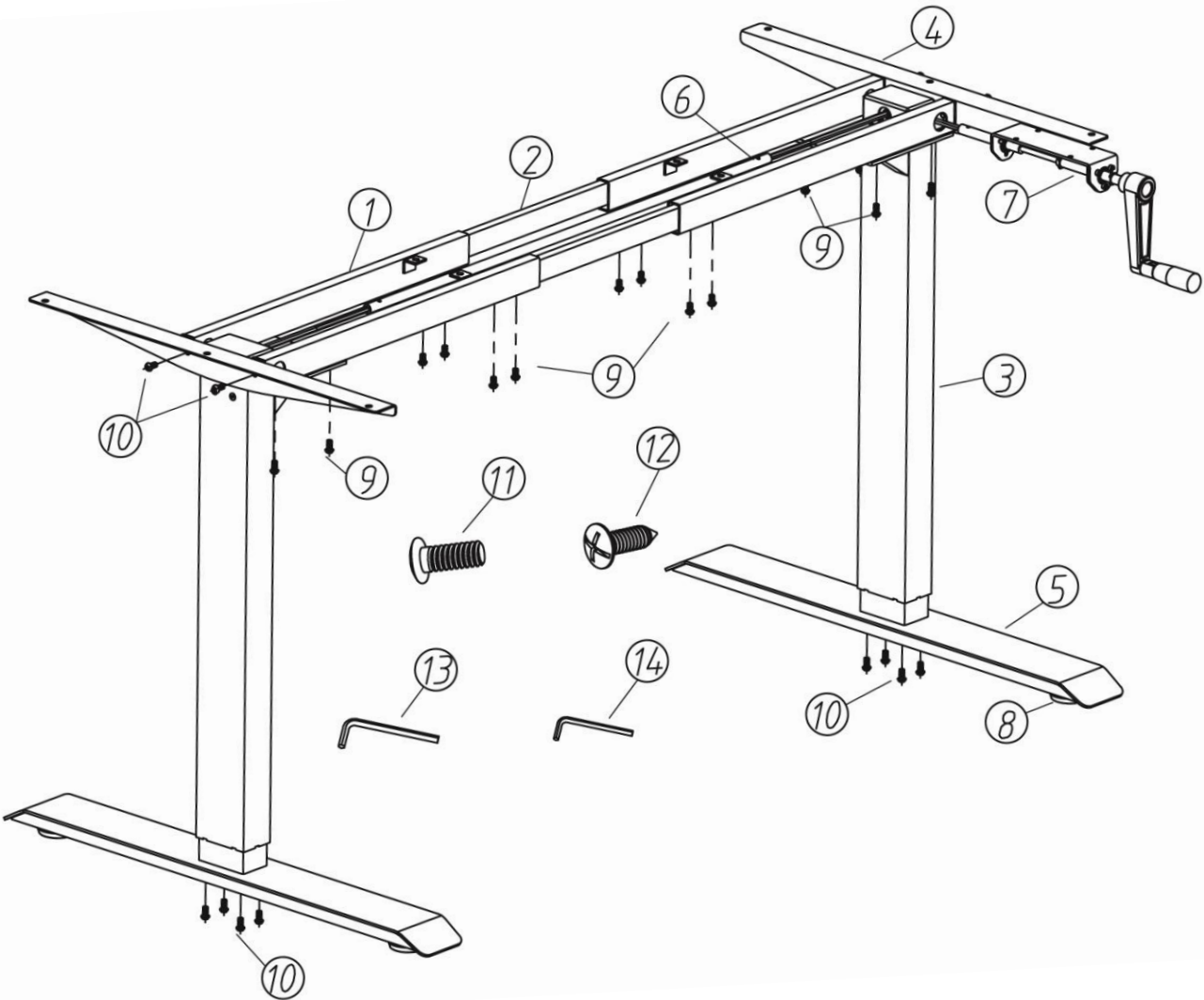


Assembly and Operation Instructions

Parts List

Part	Name	Qty
1	End Frame	4
2	Cross Rail	2
3	Lift Column	2
4	Side Bracket	2
5	Foot	2
6	Column Link	1
7	Handle Crank	1
8	Levelling Foot	4
9	Hex Socket Screws Pack A - M6X10mm	16

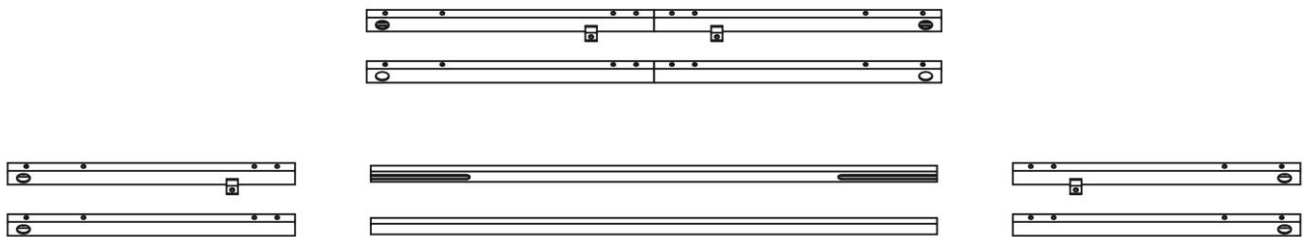
Part	Name	Qty
10	Hex Socket Screws Pack B - M6X12mm	12
11	Hex Socket Screws Pack C - M6X14mm	10
12	Wood Screws Pack D – M5X16mm	14
13	4mm Allen Key	1
14	2.5mm Allen Key	1
15	Phillips Screwdriver or Electric Hand Drill (Not included)	-



STEP 1

Lay out all the parts to ensure that all items in the parts list are present.

Fully separate the End Frames (Part 1). You will find the Cross Rails (Part 2) inside.



STEP 2

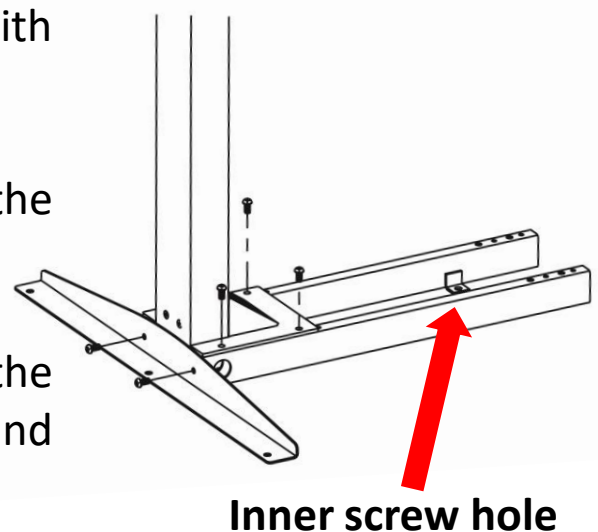
Position 2 End Frames (Part 1) beside the Lift Column (Part 3) on the ground as shown in the diagram.

Note: Orientate the inner screw holes of the End Frames flushed to the ground with the holes facing the inner side.

Align the holes on the Lift Column to the holes on the End Frames. Insert and fasten using 4 screws from Pack A with the supplied 4mm Allen Key (Part 13).

Position a Side Bracket (Part 4) to the edge of the Lift Column.

Align the holes on the Lift Column to the holes on the Side Bracket. Insert and fasten using 2 screws from Pack B.

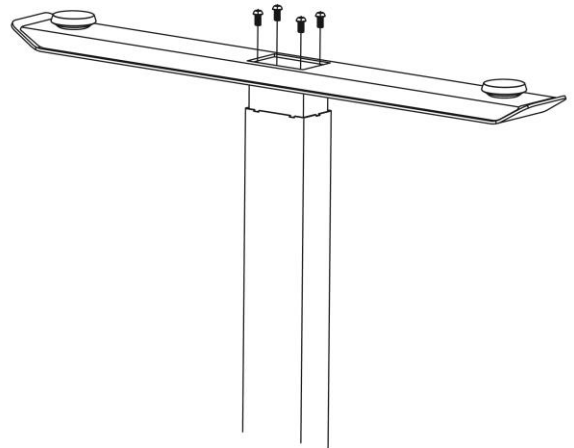


Repeat the same process for the other Lift Column.

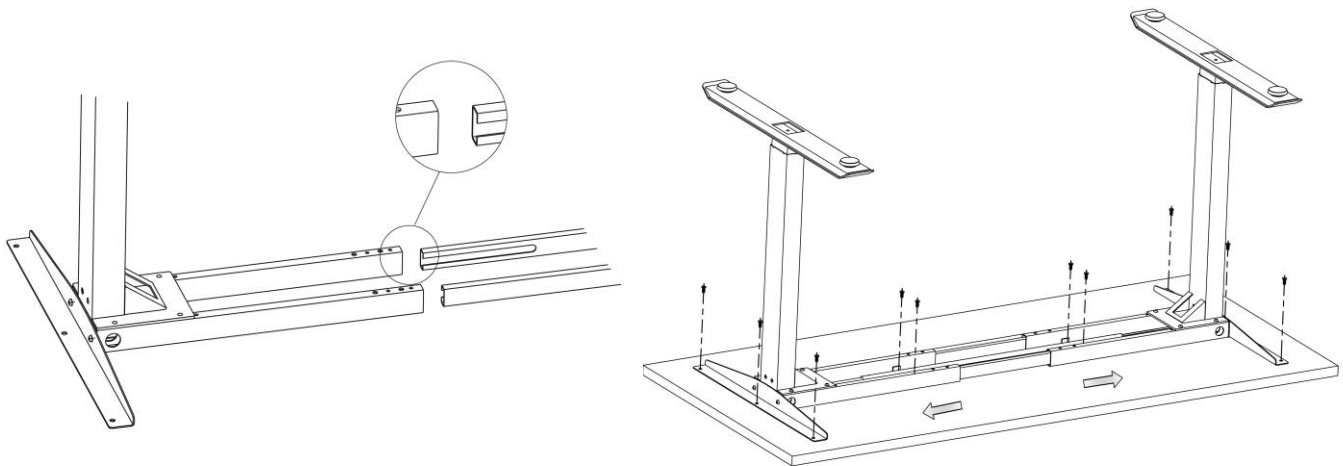
STEP 3

Attach the Foot (Part 5) to the bottom of the Lift Column (Part 3) and align the screw holes. Insert and fasten using 4 screws from Pack B in a criss-cross pattern.

Repeat the same process for the other Lift Column.



STEP 4



Orientate the side of the table top carton with the text "**Face up during installation**" upwards. Open the carton and ensure that the bottom surface of the table top faces upwards during installation.



Leave the table top in its original carton during installation to avoid damaging the table top and its work surface.

Place the two assembled Lift Columns (Part 3) on the bottom surface of the table top and insert the Cross Rails (Part 2) into the End Frames (Part 1). Ensure the Cross Rail slots face inwards.

Check that the frame assembly is sitting flat on the table top.

STEP 4 – CONTINUED



Make sure the frame assembly sits flat on the table top. Loosen earlier installed screws and retighten if necessary.

Option 1: For table tops with AdapTABLE preinstalled nuts:

Align the 10 screw holes (3 on each Side Bracket and 1 on each End Frame) to the preinstalled nuts on AdapTABLE supplied table tops.

Insert and fasten using 10 screws from Pack C in a criss-cross pattern to fix the frame assembly to the table top.

Option 2: For table tops without preinstalled nuts:

Slide the Lift Columns out and leave approximately 3 – 4cm of space at each end. Center the frame assembly to the table top.

Insert and fasten using 10 wood screws from Pack D in a criss-cross pattern to fix the frame assembly to the table top.

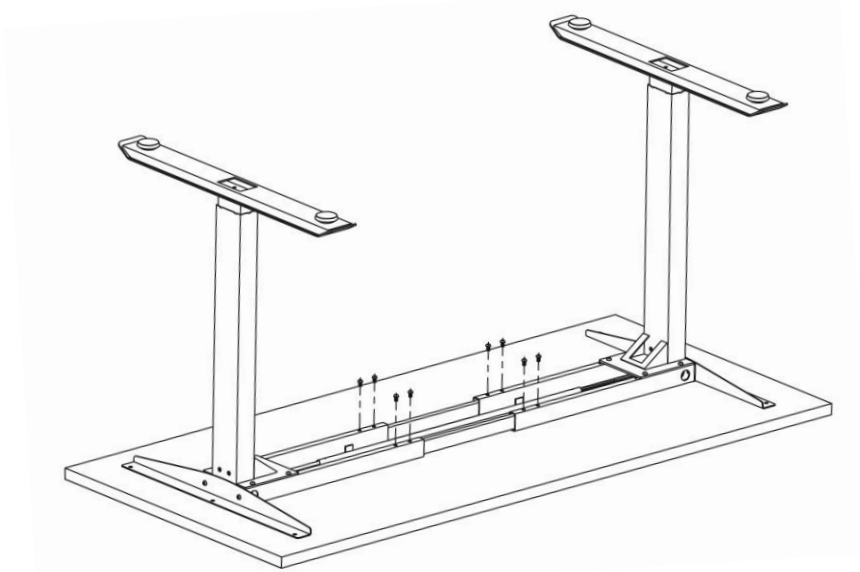


Check and make sure that the supplied wood screws in Pack D are not too long for the table top. Wood screws which are too long can puncture and damage the work surface. If the wood screws are too long, purchase shorter wood screws which fits your table top.



Frame maximum width is 160cm.

STEP 5

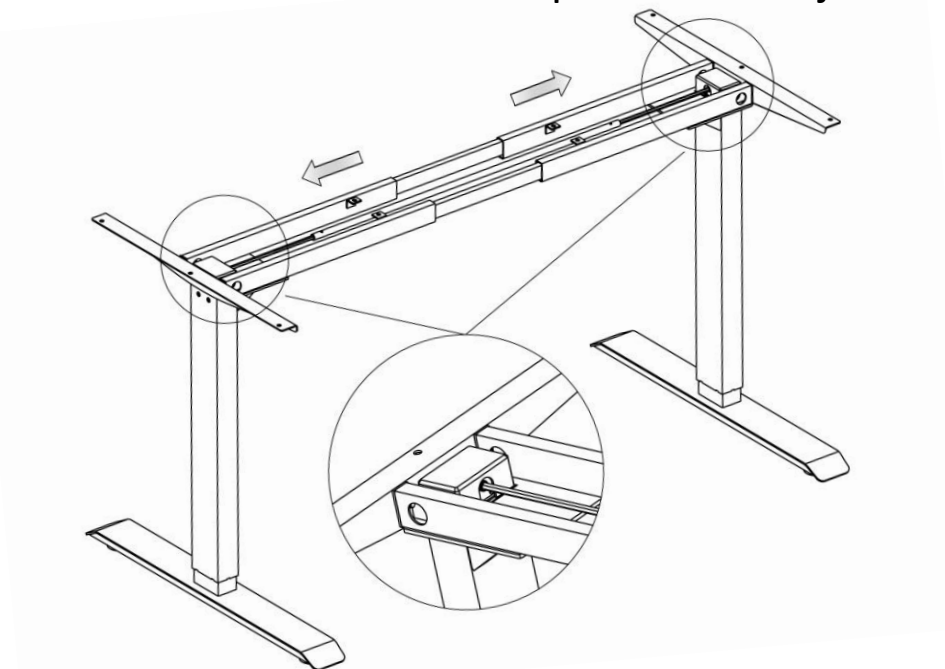


Ensure the Cross Rails (Part 2) are positioned evenly within the End Frames (Part 1). Insert and fasten using 8 screws from Pack A in a criss-cross pattern to fix the Cross Rails in position.

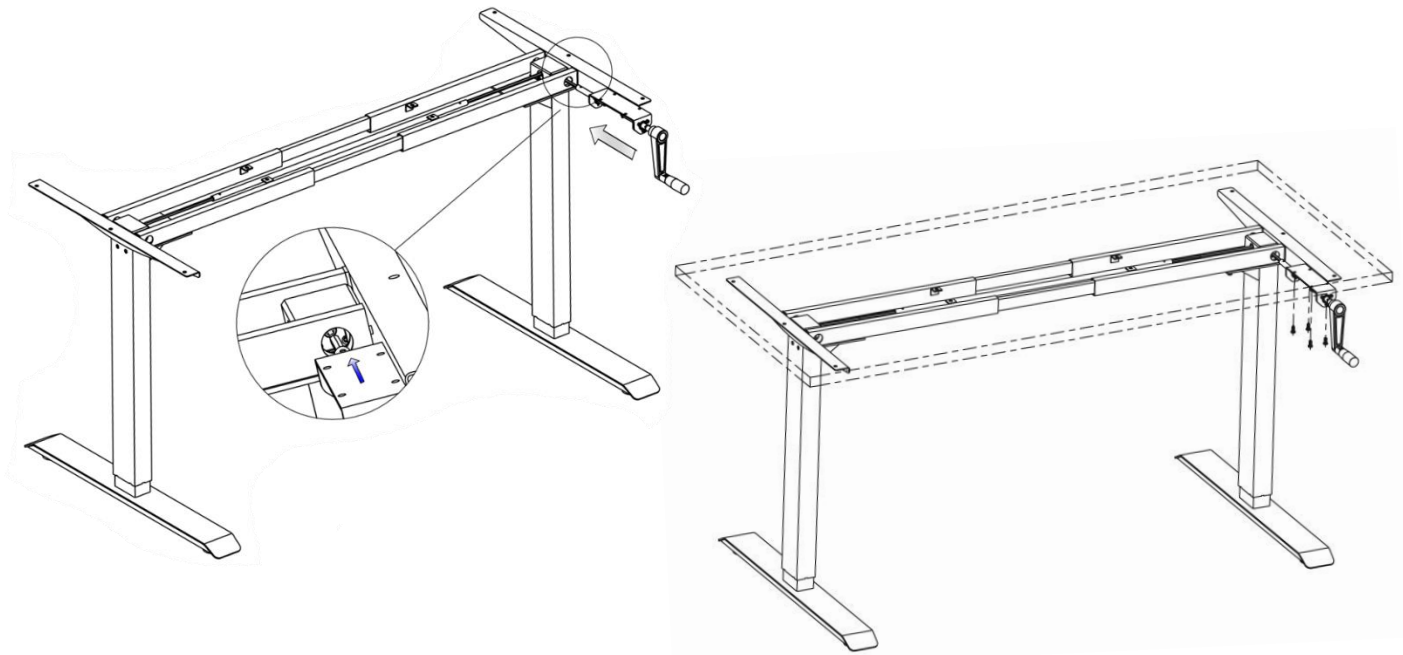
STEP 6

Insert the Column Link (Part 6) into the Lift Columns (Part 3). Adjust the length of the Column Link by loosening the internal screw using the 2.5mm Allen Key (Part 14).

Tighten the internal screw to lock it in place after adjustments.



STEP 7



Insert the Handle Crank (Part 7) into the right Lift Column (Part 3) (left side while the table top is on the ground during installation).

Adjust the length of the Handle Crank by loosening the internal screw using the 2.5mm Allen Key (Part 14).

Option 1: For table tops with AdapTABLE preinstalled nuts:

Align the 4 holes on the Handle Crank onto the 4 tapped holes at the front of the table top.

Option 2: For table tops without preinstalled nuts:

Mark 2 separate points 12cm from the front edge of the table top lightly with an erasable pencil and draw a straight line through these points. Position the Handle Crank's outer holes along this line.

Insert and fasten using 4 wood screws from Pack D to fix the Handle Crank onto the table top.

Tighten the internal screw to lock it in place after adjustments.

STEP 7 – CONTINUED



Check and make sure that the supplied wood screws in Pack D are not too long for the table top. Wood screws which are too long can puncture and damage the work surface. If the wood screws are too long, purchase shorter wood screws which fits your table top.



Do not overtighten the screws. Overtightening could cause damage to the components.

STEP 8

Turn the assembled table over with minimally 2 personnel by grabbing the table top (do not grab by the Lift Columns) and using the feet as pivot points. Adjust the Levelling Feet (Part 8) as needed.



Make sure no obstacles are above or below the table.

Make sure the table is not touching any walls.

Make sure all cords have the appropriate length to accommodate changes in height.

CONGRATULATIONS!

THE SET UP IS FINISHED

YOUR MANUAL HEIGHT ADJUSTABLE TABLE IS READY TO BE USED

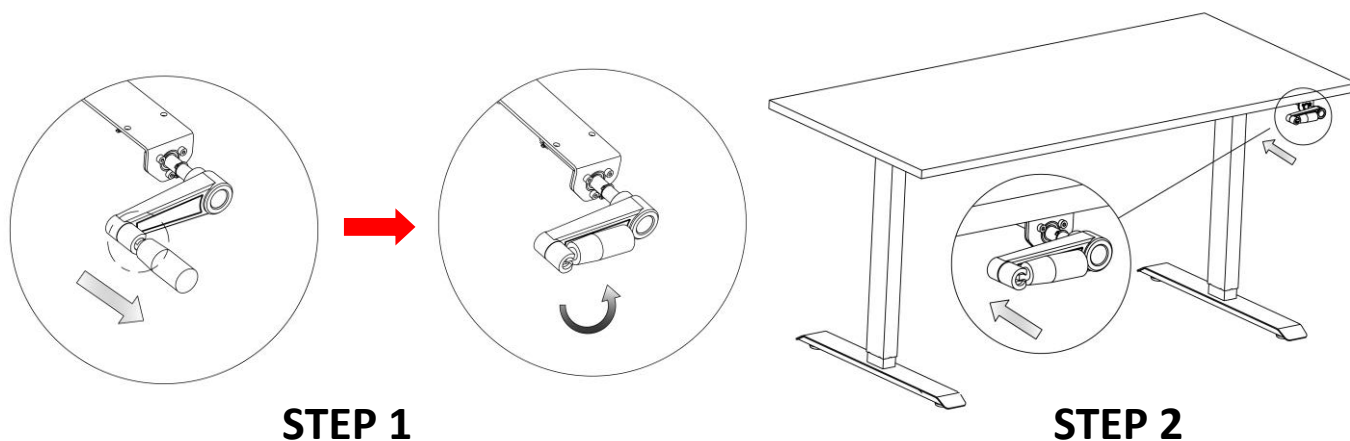
OPERATION GUIDE

Adjusting Height

Rotate the handle crank anti-clockwise to increase the height of the table. Rotate the handle crank clockwise to decrease the height of the table.

Hidden & Collapsible Handle Crank

This model features a collapsible handle crank to tuck it neatly under the table. 1) Pull the handle outwards and collapse 90 degrees, 2) tuck the entire handle crank under the table top by pushing it inwards to keep it secure and hidden. This functions as a child lock safety mechanism as well as to keep the path clear of protruding handles.



TECHNICAL SPECIFICATIONS

Height Range	70 – 115cm (without desktop)
Base width	110 – 160cm
Travel Speed	10mm/turn
Weight capacity	80kg
Segments	2
Features	Manual crank rotating mechanism
	Adjustable levelling foot
	Hidden & Collapsible handle crank

CAUTION

Make sure no obstacles are above or below the table. Make sure the table is not touching any walls. Make sure all cords have the appropriate length to accommodate changes in height.



WARNING! PINCHPOINT!

Keep hands and fingers clear!



Keep children away from operating the sit stand tables.
There is a risk of injury.



Do not sit or stand on the table frame.
Do not crawl or lie under the table frame.



Do not place any objects taller than 50cm underneath the table.



Do not attempt to open the Lift Column or any other peripherals.

USE & LIABILITY

This sit stand table has mechanical linear actuators and is designed for use in dry work areas only. The table height is adjustable so that it can be positioned at the most ergonomically suitable height. Any other use is at user's risk. Under no circumstances does the manufacturer accept warranty claims or liability claims for damages caused from improper use or handling of the table frame.