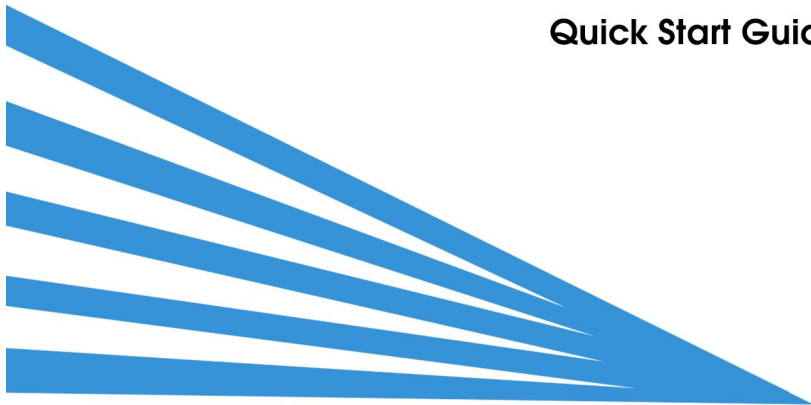




Beasen[®]

Quick Start Guide



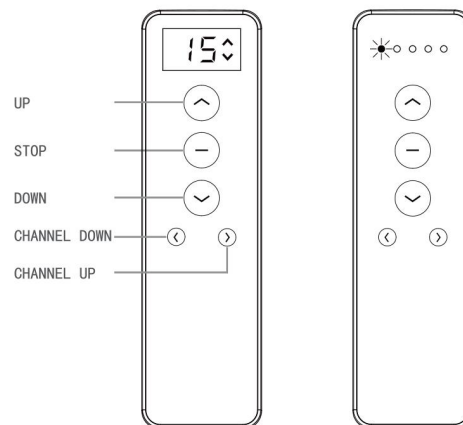
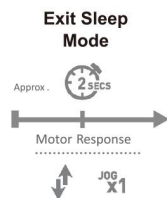
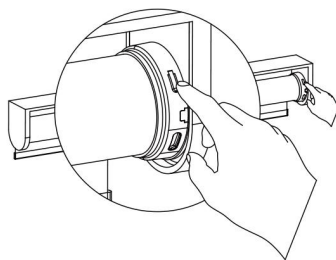
Step1:Exit Sleep Mode

Each battery motor will come preprogrammed from Beasen Upon leaving the factory the motor is placed into "Sleep Mode" to avoid accidental operation during shipping. It is necessary to "Wake" the motor before operation and setup.

To "Wake" the motor and exit Sleep Mode, assure the motor is installed and secured in the mounting hardware.

Once installed safely and securely, press and hold the programming button on the motor head until the motor jogs **once**. It is now no longer in "Sleep Mode" and ready for further setup.

Select channel 1 to control the shades or select related channel corresponding to the number on the customized shades.



Note: If the remote can not control the motor when first use, Please refer to the "remote+motor pairing" on page 5 of the <Remote Programming Guide>.

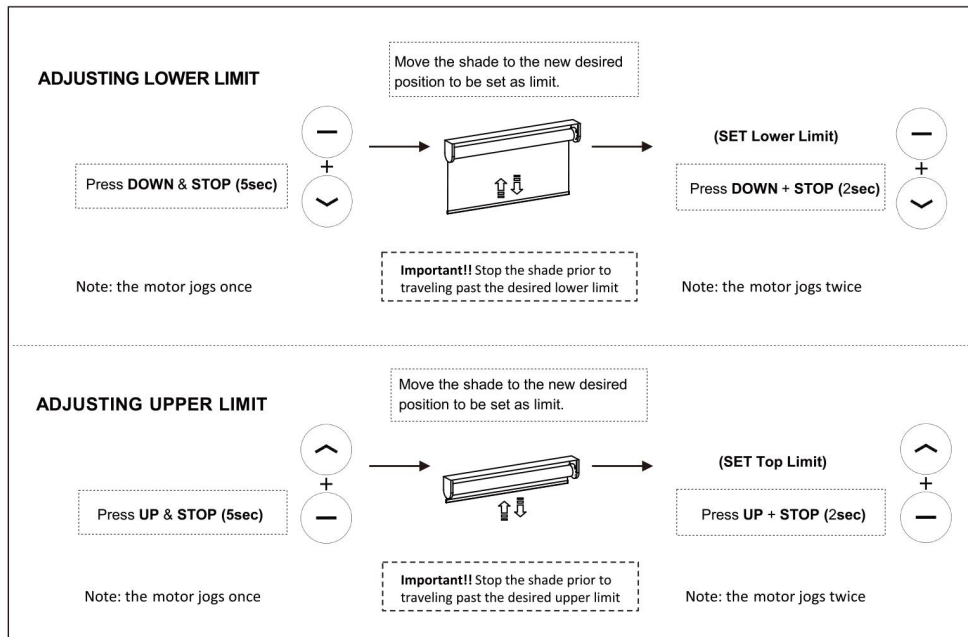
Step2:Adjusting Limits

Each battery motor will come preprogrammed from Beasen.

The preprogramming ensures the remote is paired with the motor, the upper and lower operation limits are set, the remote is unlocked .

Follow the below steps to adjust the lower and upper limits if required.

If limits need adjusting, follow the instructions below to unlock the remote for limit setting:



!!WARNING!! - Move shade in short increments by pressing the UP/DOWN button in 1 second intervals (pressing the UP/DOWN button for more than 3 seconds may send the shade past desired upper/lower limit and may result in damage to the product). Once you have reached the desired upper/lower limit, you can adjust the limit with either the UP and DOWN buttons. (remember to adjust in short increments!)

