



Amazon Alexa Programming Guide



Shades Now Work With Amazon Alexa

NOTE: Only on the condition that all the blinds has been set up with upper and lower limits and can be controlled by remote, the following operations with the smart speakers can be moved on !!!

Operate your Smart shades by voice command using the ZigBee 3.0 hub inside the Amazon Alexa, when set up with the Alexa app :

- ▶ Easy setup with Smart shade ZigBee3.0.
- ▶ Use voice to control your Shades.
- ▶ Use voice to group control.
- ▶ Control shades with setting routines such as “voice and schedule”.
- ▶ Control shades with the Smart wireless remote.

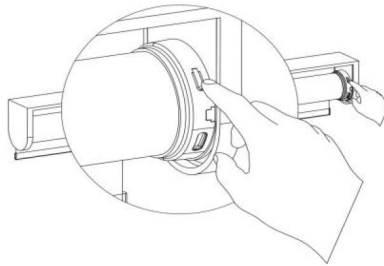
Note: Smart shades can directly work with 5 Versions' Alexa.
(Echo Plus 2nd Gen, Echo Show 2nd Gen, Echo Studio, Echo Show 10, Echo 4th Gen).



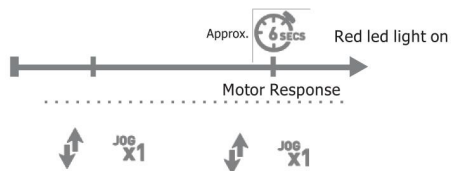
Setting Up Your Amazon Alexa And ZigBee Mesh Network By Voice

- 1 You must have a current Amazon account to get started. Download the Alexa app to your smart phone or tablet, then log in and follow the instructions to register your Amazon Alexa.
- 2 Ask Alexa "Discover my devices"
- 3 Press and hold the P1 button on the motor head for 6 seconds until the motor jog twice then release the button . When the red led light is on indicates that you entered the pairing mode.
- 4 The motor will jog twice and the green led flash for 3 times indicates pairing with the Alexa succeed.

Hold P1

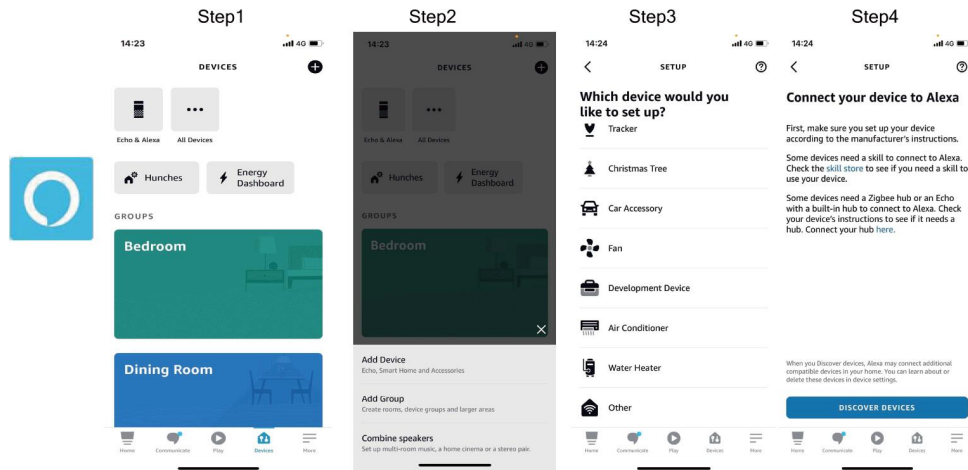


**Activate Zigbee Network
Pairing Mode**



Setting Up Your Amazon Alexa and ZigBee Mesh Network by Alexa App

You must have a current Amazon account to get started. Download the Alexa app to your smart phone or tablet, then log in and follow the instructions to register your Amazon Alexa.



In the Alexa app, go to the device menu, select the (+) icon.

Select "add device" .

Select "other" .

Click the "DISCOVER DEVICES"

Enter the motor into the pairing mode:

- 1 Press and hold the P1 button on the motor head for 6 seconds until the motor jogs twice then release the button. The red LED light indicates entering the pairing mode.
- 2 The motor will jog twice and the green LED will flash 3 times, indicating successful pairing with Amazon Alexa.

Edit The Name Of The Shades And Voice Control

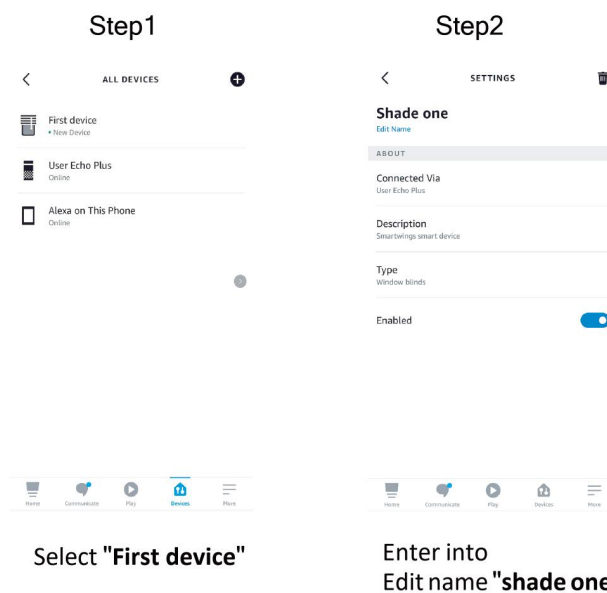
1. The Alexa App has discovered all of the devices.
2. Select CHOOSE DEVICE and choose the devices to set up.
3. To change the name of the device, select its name then select "Edit Name" to make change your preferred name for voice command.
4. Recommended examples include.
 - ▶ Room location shade one,two,three,etc.
 - ▶ North window.
5. Now you can use the voice to control the DeyiSmart shade.

ASK Alexa:

"Alexa,open/raise the shade one"

"Alexa,close/lower the shade one"

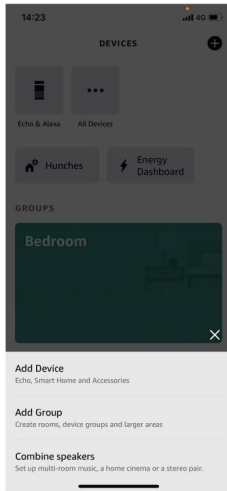
"Alexa,open/close/set the shade one to 50%"



Note: *Now Echo 4 Gen does not support the voice control with open/close command well. You can use the voice define in the routine function.*

Creating Groupes

Step1



In the top right corner, select the (+) button to add a new group . Select "ADD GROUP"

Step2



Select "Create a room group"

Step3



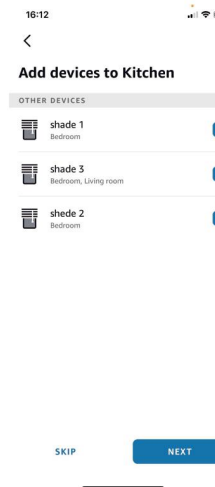
Click "NEXT"

Step4



To name the group , select from the list or create your own.

Step5

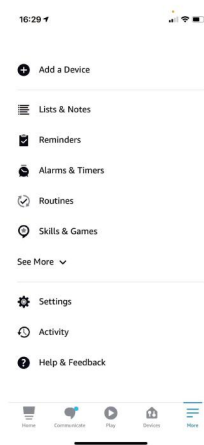


Select window treatments to join in the group.

SETUP COMPLETE

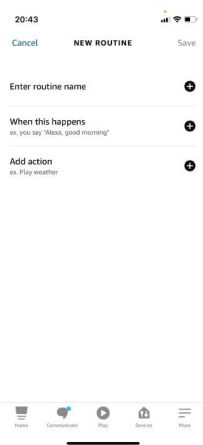
Creating The Routines With Voice

Step1



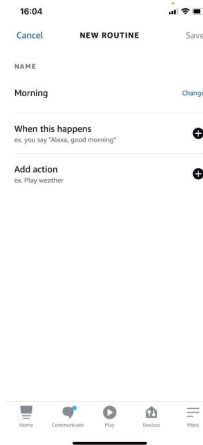
Select "routines"

Step2



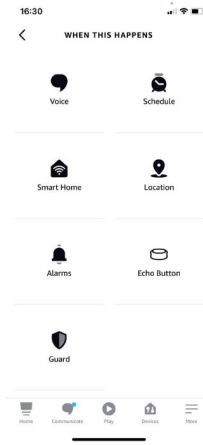
Enter into routines setting

Step3



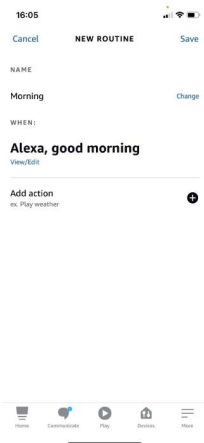
Edit the routine name

Step4



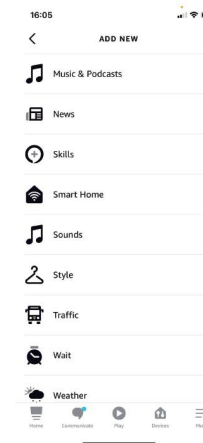
when this happens, click the "+", select the "Voice"

Step5



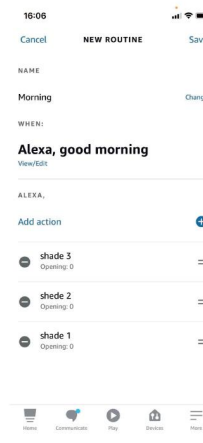
Enter your custom command phrase and select the (+) icon to the right of Add action.

Step6



Select "Smart Home"

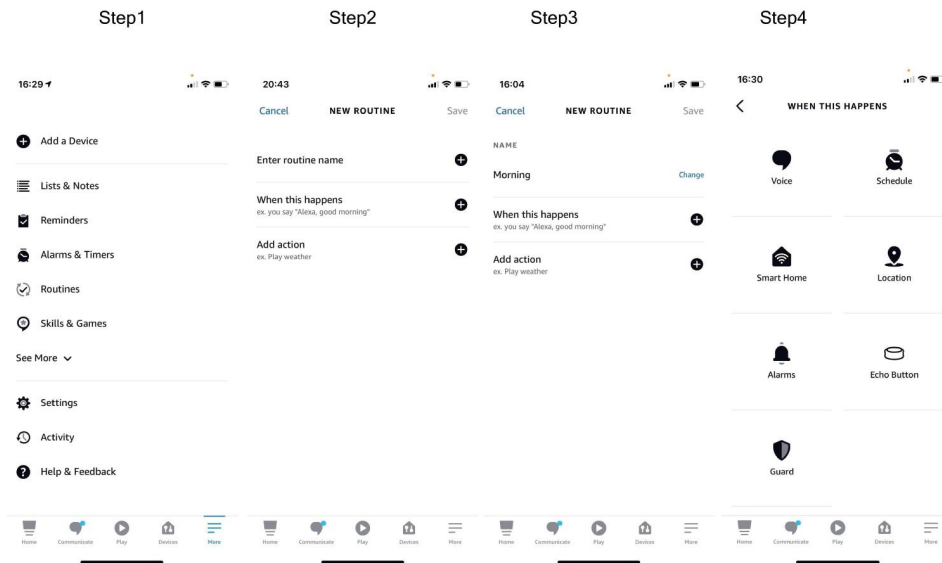
Step7



Select the Device, Group you would like to control. Then click the "Save".

SETUP COMPLETE

Creating The Routines With Schedule

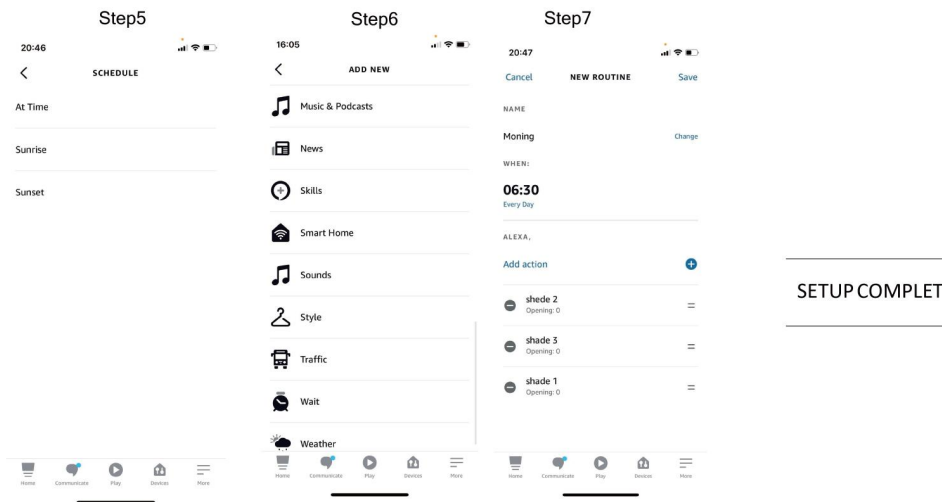


Select "routines"

Enter into routines setting

Edit the routine name

when this happens, click the "+" ,select the "Schedule"



You can select 3 kinds of Schedule function

Select "Smart Home"

Select the Device, Group you would like to control. Then click the "Save".

SETUP COMPLETE