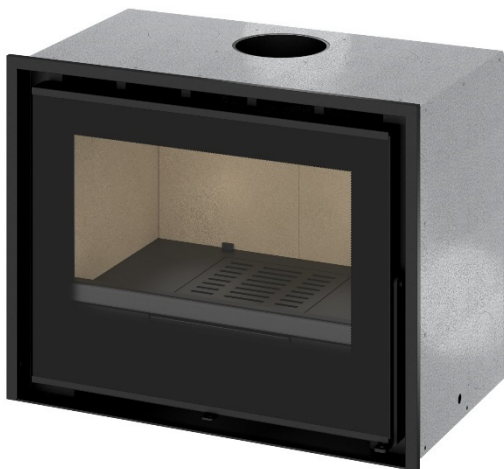




Instruction Manual

Aere 70/70S Inbuilt



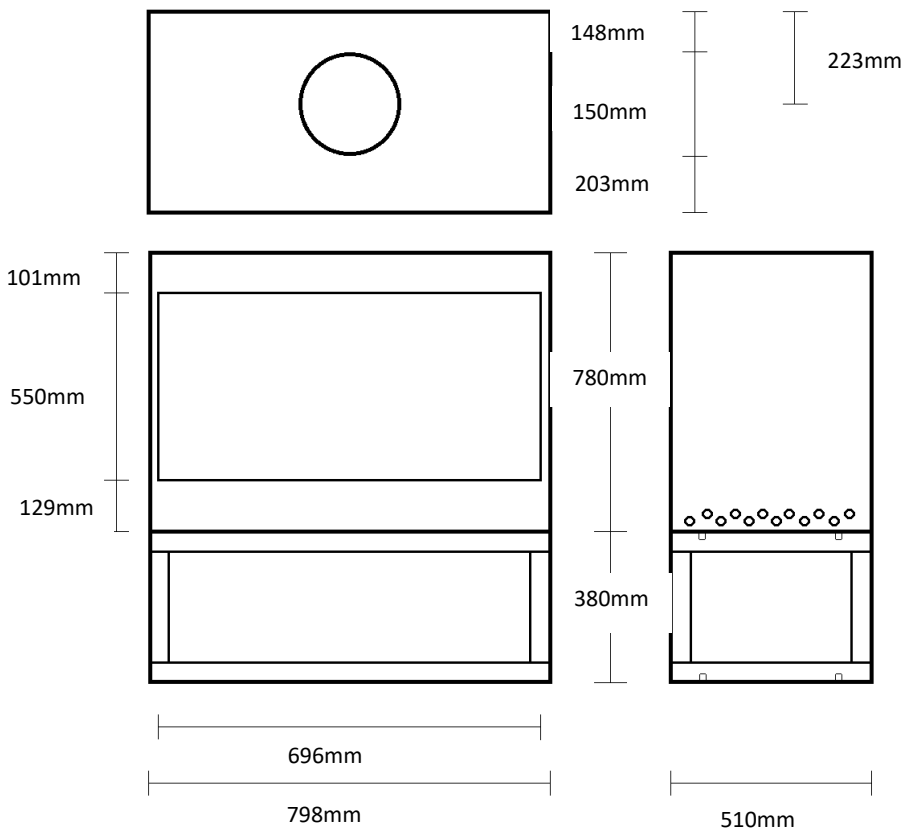
It is important that you read this manual carefully before installing
and using your appliance

V20200916AL



For Carpenter – Zero Clearance box installer – refer to main Installation manual for full instructions.

Dimensions for Zero Clearance box:

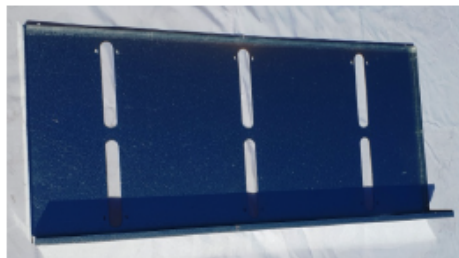
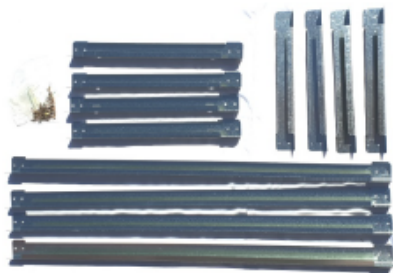


Zero Clearance Box Assembly: STAND INCLUDED

ZERO CLEARANCE BOX Parts Materials list - Check all parts supplied before beginning assembly.

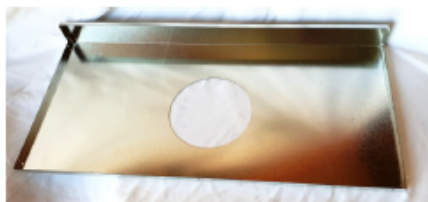
Stand Base assembly parts, 4 Shorter Uprights, 4 Side bearers with Tabs and 4 Long Rails, Hardware kit for Assy.

1 x Base Panel with 6 ob-round air slots



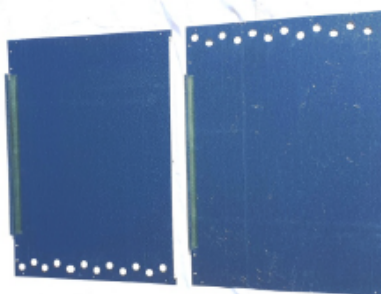
1 x Top panel with Flue hole

Pictured below Left to Right: 2 x Support Rails, 2 x Flue stand off spacers, 1 x Rear spacer and 1 x Deflector for Centre air slots



1 x Back panel

2 x Side panels front air

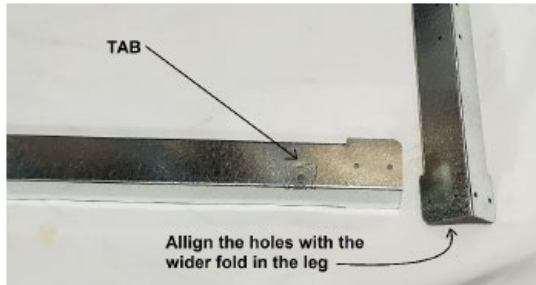
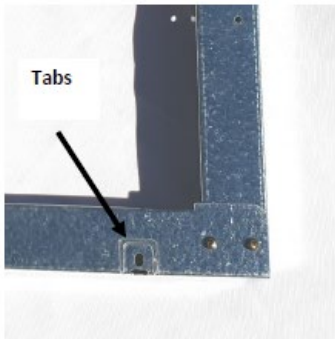


Stand Assembly:

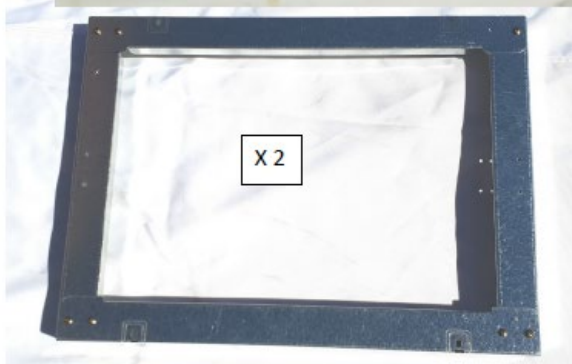
Step 1.

Assemble the Stand. Make the 2 side (or end) frames first.

For each end (side) use 2 of the Side Bearers (medium length with the cut out fold out tabs), and 2 of the shorter pieces (upstand legs). The leg has a wide fold and a smaller fold, use the wider fold so the holes align. The rails fix to the outside of the leg, the leg has the smaller holes so the rail goes on top. Fix with the 8 of the self-tapping screws.



Repeat for the opposite side.



Step 2.

Join the 2 finished Rectangle side frames with the 4 long rails (left to right). Note the long rails go on the outside of the corner.



The completed assembled base, with 4 long rails joining the 2 Rectangle side frames:



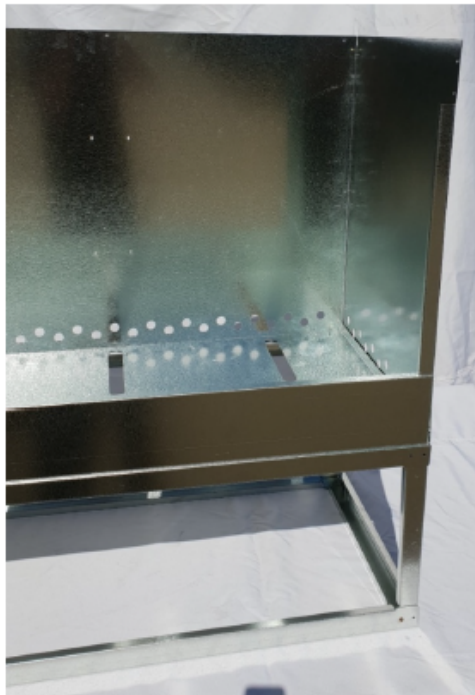
Note the tabs in the base side rails can also be used to fix the frame to the floor. Ensure the base is secured to the floor, using fixings appropriate for the flooring structure.

The floor must be able to support the weight of the heater, flue and fuel load approx. 300kg

Step 3.

Screw the base panel of the Zero Clearance box to the stand base, using the self tapping machine thread screws. Then take the ZCB side panel, and put one of the screws through the side and the base panel. The side panel should be inside the base panel fold. Then slide the back panel into the inside of the base panel rear fold, and on the outside of the side panel. Add screws but don't fully tighten until the top panel is on.

Repeat for the other side panel.



NOTE: When screwing 2 panels together through the existing holes , the screw should go through the larger hole first, then through the smaller hole, and cutting the thread in the smaller hole. I.e. some holes may screw from the inside, some from the outside.

Below shows the side panels and back panel in position. Note only fully tighten all screws once the top panel is in position.

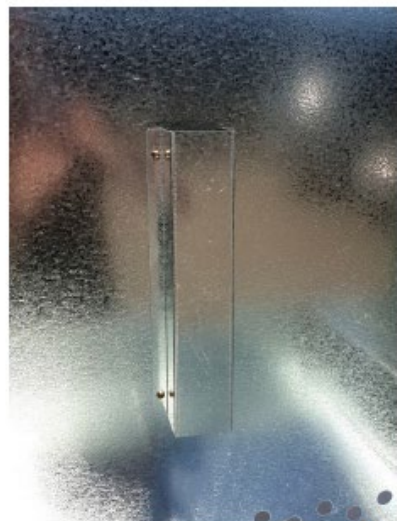


The top panel fits on, with the folds on the outside of all the other panels. Alternatively, it could be fitted on the inside of the side panels, so the holes are the same size.

Use the larger self-tapping screw for the larger holes, or create new holes with the standard screws. Once the top panel is on, tighten all of the screws.

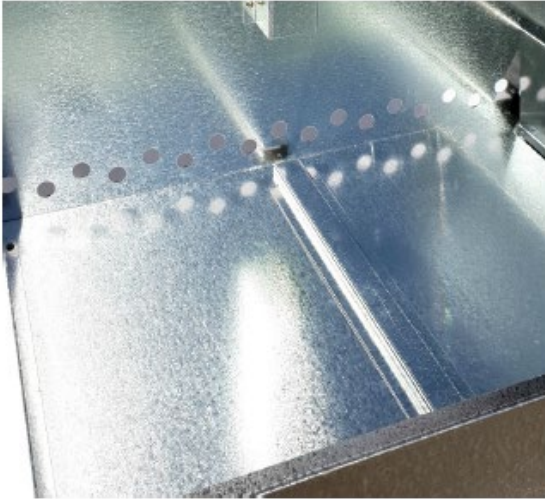
Step 4:

Add the spacer / stopper to the back wall. So that the heater will stop when inserted up to the rear spacer.

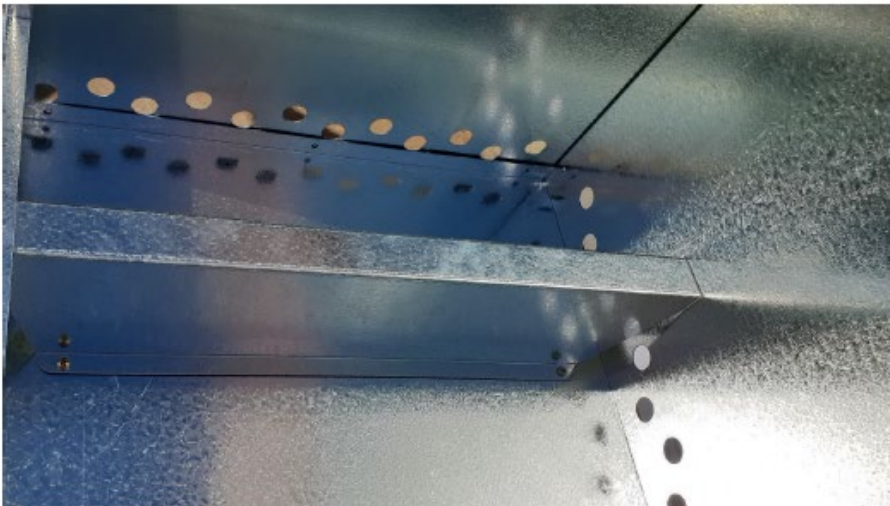


Step 5:

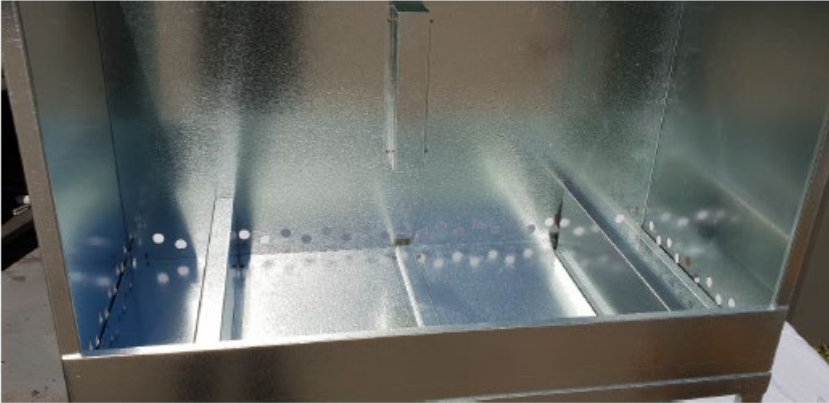
Add the centre deflector to the middle of the base, this allows air flow into the base, but stops radiant heat from directly hitting any combustible material below.

**Step 6:**

Add the Heater support rails to the base. With 4 screws each.

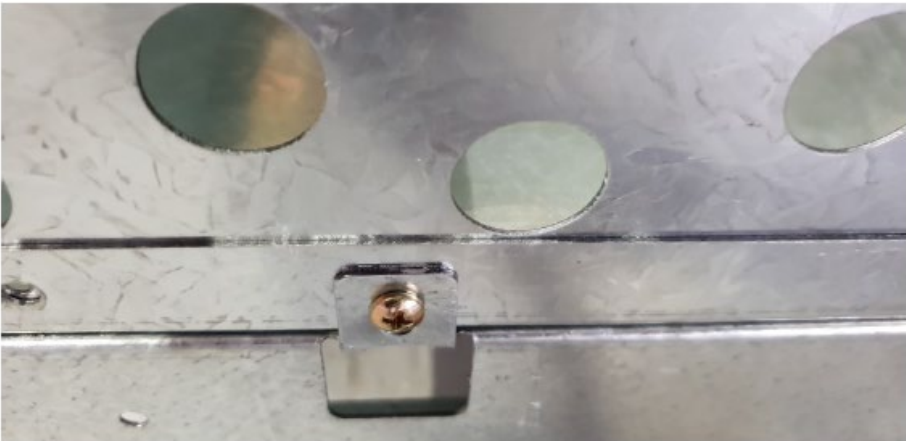


One on the left and one on the right as shown in picture:



Step 7:

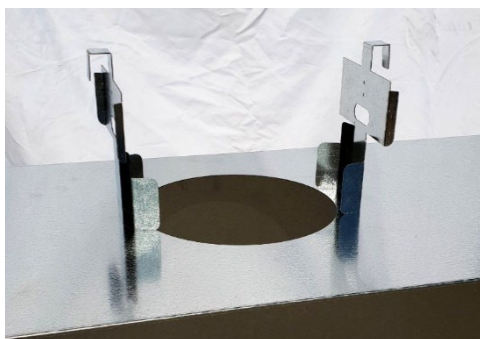
Fold up the tabs in the side rails and add self-tapping screw through the side, to help hold the ZCB to the stand. Use the self-drilling tapping screws to create new holes to fix. Ensure the heater is in correct position to match the build out fascia.



Step 8:

Fitting the Flue

The flue is raised off the top of the ZCB and the heater using these 2 brackets, orientated like below. The bottom of the bracket gets inserted into the ZCB.



The brackets are fixed to the 8" inner casing is sealed into the top of the Zero Clearance box. And the upper folded U-shaped hook is fixed to the 10" outer casing to keep it spaced 70mm off the ZCB. These can be fixed with self-tapping screws or rivets.



The 8" galvanvised casing **MUST** be sealed with a heat resistant fire cement, like the flexible sealant Pioneer Fire Cement, around the top of the Zero Clearance box to stop heater air coming into the chimney chase cavity.

