



# POD BASSINET & BEDSIDE SLEEPER

---

PRODUCT MANUAL

---

IMPORTANT! READ CAREFULLY  
AND KEEP FOR FUTURE REFERENCE

**The Babybee POD is designed and tested to comply with:** ASTM F2906-13 (2019),  
ASTM F2194-16e1, EN 1130:2019, AS/NZS 8811.1:2013 & EN 16890:2017+A1:2021

# CONTENTS

- 3.** Safety warnings
- 9.** What's in the box?
- 10.** Setting up your bedside sleeper
- 11.** Adjusting the height
- 12.** Bedside sleeper and bed height set up
- 13.** Bedside sleeper function: fix to bed
- 17.** Using in standalone mode
- 17.** Moving the bedside sleeper
- 18.** Disassembly
- 20.** Accessories
- 21.** Keeping your POD in tip-top shape
- 22.** Warranty information

**Read all instructions before assembling and using the product**

# SAFETY FIRST

## **⚠ WARNING**

TO PREVENT INJURY FROM CHOKING, CAREFULLY REMOVE AND IMMEDIATELY MOVE OUT OF REACH ALL PROTECTIVE PACKAGING.

This product is intended for use for babies aged between 0 and 5 months, weighing up to a maximum of 9kg or until they can push up on their hands and knees. Move your child to another sleeping product when your child reaches this stage.

## **⚠ WARNING**

- BEFORE USE, REMOVE AND DISPOSE OF ALL PLASTIC BAGS AND PACKAGING MATERIALS AND KEEP THEM OUT OF REACH OF CHILDREN.

## **⚠ WARNING**

- Failure to follow these warnings and the instructions could result in serious injury or death.

## **⚠ WARNING**

- This product is intended for use for babies aged between 0 and 5 months, weighing up to a maximum of 9kg.

## **⚠ WARNING**

- The co-sleeper is not suitable for children who can sit or kneel or pull themselves up. Stop using the product as soon as the child can sit or kneel or pull itself up.

# SAFETY FIRST

## **⚠ WARNING**

- Do not use this product without reading the instructions for use first.

## **⚠ WARNING**

- Do not use the product if any part is broken, torn, or missing. Contact Babybee for replacement parts and instructions if needed. **DO NOT** substitute parts.

## **⚠ WARNING FALL HAZARD**

- Be aware of the risk of burning cigarettes, open fires and other sources of strong heat, such as electric bar fires, gas fires etc. in the vicinity of the crib.
- To help prevent falls, do not use this product when the infant begins to push up on hands and knees or has reached 9kg, whichever comes first.
- Make sure the users of this product are knowledgeable on its proper operation.

## **⚠ WARNING**

- The product is ready for use only when all locking mechanisms are engaged. Check carefully that these are engaged before use.

## **⚠ WARNING**

- When the child is left unattended in the product, in “standalone sleeper mode”, always make sure that the side rail is raised and the zips are completely closed.
- All opening, adjusting, anchoring and positioning operations of the product must be carried out exclusively by an adult.

## SAFETY FIRST

- Before use in “co-sleeping mode” (fixed to bed) make sure the product is properly anchored and positioned.

### **⚠ WARNING**

- When the product is used in “co-sleeping mode” (fixed to bed), before laying the child in it, make sure that the fastening belt is hooked and tensioned properly, the product must be secured to the adult bed and no gaps between the lower side of the co-sleeper and the adult bed/ mattress must be present. If there is any gap between the co-sleeper and the adult bed DO NOT use the product.
- The product must always be placed on a horizontal surface. Never leave the product on an inclined surface with the child inside of it.
- Young children should not be allowed to play unsupervised in the vicinity of the crib.

### **⚠ WARNING**

- Placing additional items in the product may cause suffocation.
- Do not use the product without the frame.
- Keep the fastening belt away from the reach of children.
- Only use the mattress supplied by the manufacturer.
- The thickness of the uncompressed mattress shall not exceed 25mm. The upper surface of the non compressed mattress must be at least 120mm lower than the upper surface of the lowest side of the bedside sleeper.
- Do not use more than one mattress in the product.
- Do not leave any object inside the product that could reduce its depth.
- Do not position the product near walls and obstacles to prevent entrapment hazards.

## SAFETY FIRST

### **⚠ WARNING**

- To reduce the risk of SIDS, paediatricians recommend healthy infants be placed on their backs to sleep, unless otherwise advised by your physician.
- If a sheet is used with the pad, use only the one provided by Babybee or one specifically designed to fit the dimensions of the bassinet mattress.
- Do not leave small objects inside the product that could cause choking hazards.
- Use only spare parts approved by the manufacturer. Do not apply accessories to the product, which are not supplied by the manufacturer.
- The attachment system is provided, do not use any other system to attach co-sleeper to the bed.
- Do not adjust the product with the child inside.
- Do not move the product with the child inside.
- Do not use the product for more than one child at a time.
- The product must be kept away from electric cables and cords: do not place the product near windows where cords, curtains or similar objects could pose choking or strangling hazards for the child. To avoid strangling hazards, do not give to your child or place near her/him, objects equipped with cords.

### **⚠ WARNING**

- Do not place the product close to another product, which could present a danger of suffocation or strangulation, e.g. strings, blinds/curtain cords, etc.

### **⚠ WARNING**

- Strings can cause strangulation! Do not place items with a string around a child's neck, such as hood strings or pacifier cords. Do not suspend strings over a bassinet or cradle or attach strings to toys.

## SAFETY FIRST

- All assembly fittings should be tightened properly, and care should be taken to ensure no screws are loose, as a child could trap parts of the body or clothing e.g., strings, necklaces, ribbons etc. which could pose a risk of strangulation.

### **⚠ WARNING**

- To avoid hazards from the child's neck being caught on the top rail on the side that is next to the adult bed, the top rail must not be higher than the adult's bed mattress.

### **⚠ WARNING**

- To avoid the risk of your child being strangled, the attachment system to the adult's bed shall always be kept away from and out of the crib.
- A prolonged exposure to the sun may cause changes of tones to the product's colour. After a prolonged exposure of the product to high temperatures, wait a few minutes prior to placing your child in it.
- When not in use, keep the product away from the reach of children.
- Before assembly, check that the product and all its components have not been damaged during transportation. Should any part be damaged do not use and keep out of reach of children.

### **⚠ WARNING FALL HAZARD**

- Always check that the bassinet is securely locked in the stand by pulling upwards on the bassinet bed.

#### **BEFORE CO-SLEEPING MODE (FIXED TO BED)**

### **⚠ WARNING**

- Always read and follow the assembly instructions for each product use mode (co-sleeper & stand alone bassinet).

## SAFETY FIRST

### **⚠ WARNING**

- Always use ALL required parts for each use mode. Check instruction manual for a list of required parts. Periodically check product for loose, damaged, or missing parts.
- The side support of the co-sleeper should always be put close to the adult mattress and the mattress should always be aligned with the height of the side support for restraint of the co-sleeper. Furthermore, the co-sleeper should be firmly fixed to the structure of the adult bed or to the mattress support.

### **⚠ WARNING**

- Use only the pad provided by manufacturer. **NEVER** add a pillow, comforter, or another mattress for padding.
- Assemble product according to manufacturer's instructions for ANY use mode - bedside sleeper as well as bassinet.
- The maximum thickness of the mattress is to be 25mm.

### **⚠ WARNING SUFFOCATION HAZARD**

Infants have suffocated:

- In gaps between extra padding and side of bassinet/cradle, and
- On soft bedding

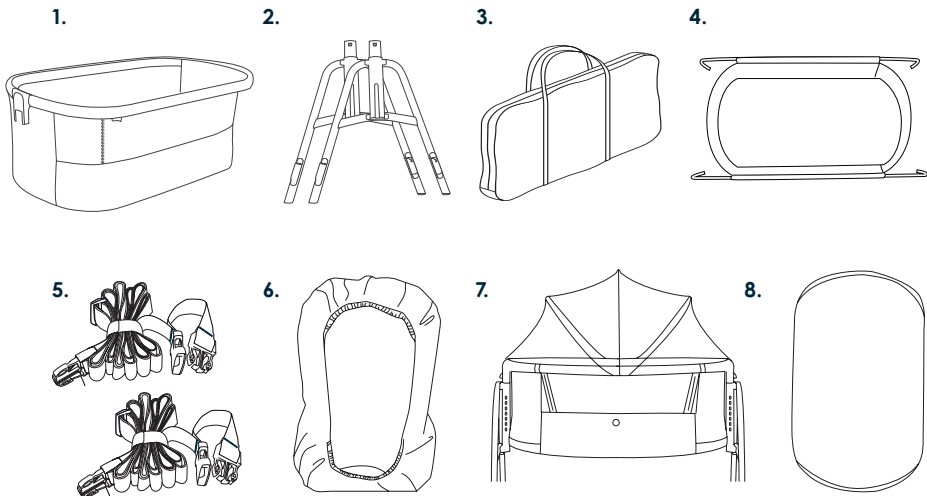
### **⚠ WARNING**

- The bassinet should be locked in the fixed position when the child is left unattended.
- Always ensure that the product is used on a horizontal surface.



# WHAT'S IN THE BOX?

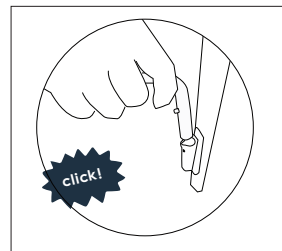
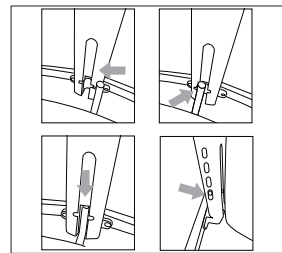
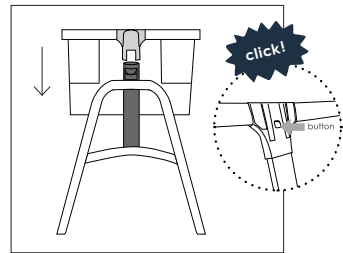
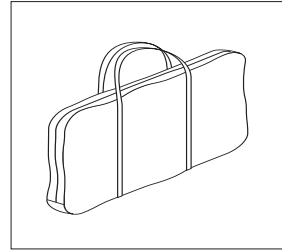
Please check that you have all the correct parts before getting started.



1. 1 x bedside sleeper
2. 2 x legs
3. 1 x carry bag
4. 1 x basket
5. 2 x fixing belts
6. 1 x fitted sheet
7. 1 x mosquito net
8. 1 x mattress and waterproof cover

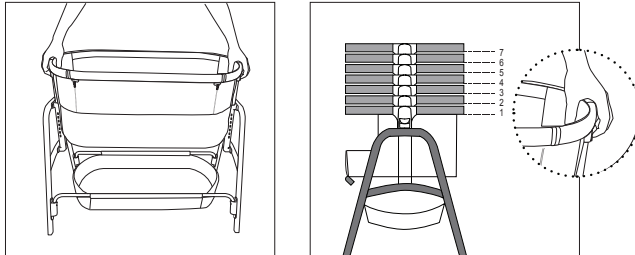
# SETTING UP YOUR BEDSIDE SLEEPER

- 1 Open bag and take out contents. Remove all protective packaging, except for the plastic cover of the mattress. **The return policy is void if the mattress bag is opened or destroyed.**
- 2 Insert one set of legs into the bedside sleeper body at a time, ensuring the button clicks audibly into the leg joint. Ensure both legs are clicked in securely.
- 3 Adjust height to the lowest position by aligning the spring button with the required hole on the inside of the leg - insert and push down. Repeat on the other side.
- 4 Insert all basket tubes (attached to basket) into frame, until spring buttons audibly click into place.



# ADJUSTING THE HEIGHT

- 1 Squeeze the height adjustment buttons at each end of the bedside sleeper body and raise the bedside sleeper to one of the seven height settings.



## ⚠ WARNING

- THE 2 LEGS OF THE CO-SLEEPER SHOULD **ALWAYS** BE ADJUSTED TO THE SAME HEIGHT TO ENSURE A FLAT EVEN SURFACE.
- **NEVER** USE CO-SLEEPER ON AN INCLINED POSITION.

## ⚠ WARNING

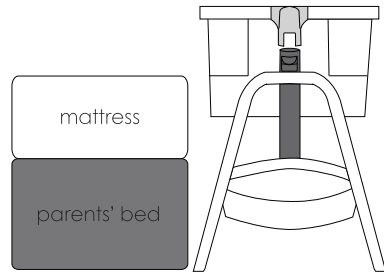
- THIS PRODUCT IS INTENDED FOR USE FOR BABIES AGED BETWEEN 0 AND 5 MONTHS, WEIGHING UP TO A MAXIMUM OF 9KG.

## BEDSIDE SLEEPER AND BED HEIGHT SET UP

- 1 Measure the bed height.

Pull height adjustment handles at each end up to adjust bedside sleeper to preferred height.

- 2



- 3 Ensure the bedside sleeper side wall closest to the bed is not higher than the adult mattress.

- 4 Check bedside sleeper is level, both numbers on the height adjustment handles are the same & the crib is not on a lean.

### **⚠ WARNING**

- THE 2 LEGS OF THE CO-SLEEPER SHOULD **ALWAYS** BE ADJUSTED TO THE SAME HEIGHT TO ENSURE A FLAT EVEN SURFACE.
- **NEVER** USE CO-SLEEPER ON AN INCLINED POSITION

### **⚠ WARNING**

- THIS PRODUCT IS INTENDED FOR USE FOR BABIES AGED BETWEEN 0 AND 5 MONTHS, WEIGHING UP TO A MAXIMUM OF 9KG.

# BEDSIDE SLEEPER AND BED HEIGHT SET UP

## Recommended mattress heights:

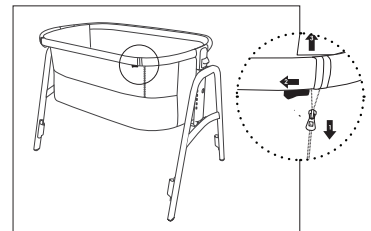
Compatible with Single, King Single, Double, Queen and King Size Beds - not compatible with Super King Bed.

This bedside sleeper is designed for use only with adult beds that are between 50.8cm and 63.5cm from floor to top of adult mattress.

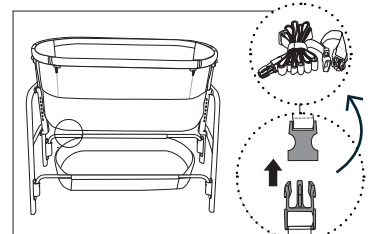
If your mattress is below 50.8cm do not use product as a bedside sleeper. Adult mattress must be at least 2.5cm higher than the co-sleeper's side opening.

## BEDSIDE SLEEPER FUNCTION - FIX TO BED

**To lower the drop side:** Fully open zips on both sides. Holding the side rail, slide the buttons on the under side of the rail and lift rail upwards. The drop side can be attached by Velcro® to the underside of the bedside sleeper.

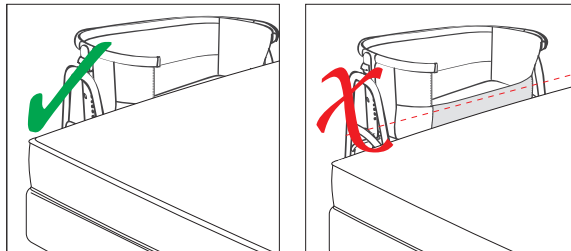


Attach the part of the fixing belt with two clips to the underside of the bedside sleeper, with the female part pointing towards the floor. Repeat with the 2nd fixing belt.



## FIX TO BED CONT.

- 3 Place bedside sleeper alongside the parent's bed and with the drop side lowered, adjust the bedside sleeper height until the top edge of the bedside sleeper's lowest side is level with or below the parent's mattress.

**⚠ WARNING**

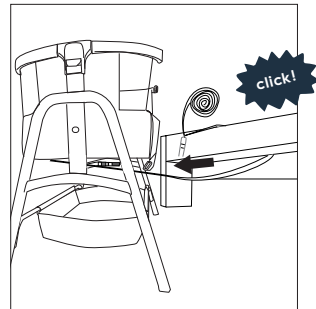
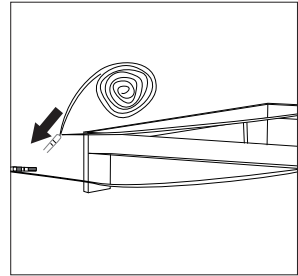
- TO AVOID INJURY OR DEATH, THE TOP EDGE OF THE CO-SLEEPER'S LOWEST SIDE NEXT TO THE ADULT MATTRESS **MUST BE NO HIGHER** THAN THE ADULT MATTRESS

**⚠ WARNING**

- WHEN THE CO-SLEEPER IS ATTACHED TO THE ADULT BED, ENSURE THE FIXING BELTS REMAIN STRAIGHT AND FIXED IN A HORIZONTAL POSITION.

## FIX TO BED CONT.

- 4 Wrap the fixing belt around the whole frame of the adult's bed.
- Click fixing belt into bedside sleeper. Tighten the fixing belt ensuring there is no gap between the adult bed and the co-sleeper.

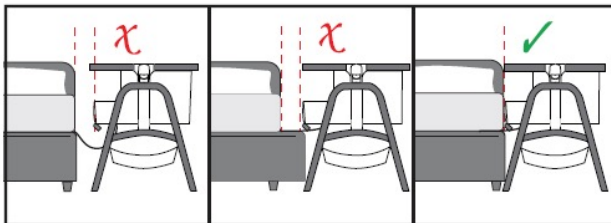


### **⚠ WARNING**

CHECK THE TIGHTNESS OF THE ATTACHMENT SYSTEM BEFORE EACH USE BY PULLING THE BEDSIDE SLEEPER IN A DIRECTION AWAY FROM THE ADULT BED.

### **⚠ WARNING ENTRAPMENT HAZARD**

TO PREVENT DEATH FROM ENTRAPMENT, THE CO-SLEEPER MUST BE PROPERLY SECURED TO THE ADULT BED USING THE FIXING BELTS.



## FIX TO BED CONT.

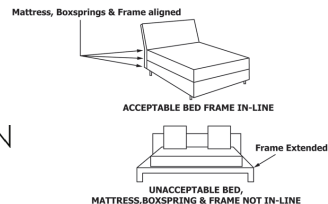
**⚠ WARNING** THERE SHALL NEVER BE A GAP BETWEEN THE CO-SLEEPER AND THE ADULT BED. IF THERE IS ANY GAP BETWEEN THE BEDSIDE SLEEPER AND THE ADULT BED **DO NOT** USE PRODUCT. **DO NOT** FILL THE GAP WITH PILLOWS, BLANKETS OR OTHER ITEMS THAT ARE A SUFFOCATION HAZARD.

**⚠ WARNING** BOTH CLIPS ON THE ATTACHMENT STRAP MUST BE ATTACHED TO THE CRIB WHEN IN CO-SLEEPER MODE. IF ONE CLIP IS BROKEN OR WILL NOT ATTACH TO THE CRIB, DO NOT USE THE CRIB IN CO-SLEEPER MODE UNTIL YOU HAVE REPLACED THE FIXING BELT.

**⚠ WARNING** NEVER USE THIS PRODUCT IN BEDSIDE SLEEPER MODE WITHOUT THE FIXING BELTS SECURELY ATTACHED TO THE ADULT BED.

**⚠ WARNING** STOP USING THE CRIB AS SOON AS THE CHILD IS ABLE TO SIT UNAIDED, PULL ITSELF UP OR PUSH UP ON ITS HANDS AND KNEES.

**⚠ WARNING** DO NOT USE THIS PRODUCT WITHOUT READING THE INSTRUCTIONS FIRST. INSTRUCTIONS CAN BE FOUND AT **BABYBEEONLINE.COM**

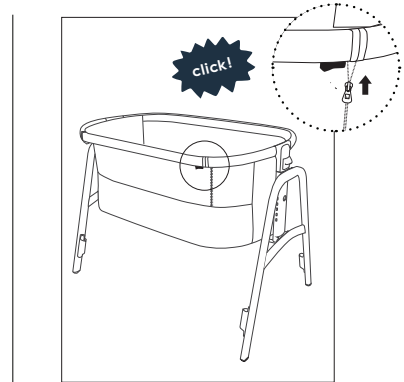




## USING IN STANDALONE MODE

**1** **Raise the drop side:** Lift the side rail and slide it into place ensuring it 'clicks' into position. Zip up the sides.

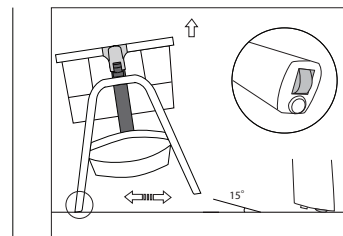
**1** Check bassinet is level, both numbers on the height adjustment handles are the same & the crib is not on a lean.



**⚠ WARNING** ALWAYS RAISE THE DROP SIDE WHEN NOT FASTENED TO AN ADULT BED.

## MOVING THE BEDSIDE SLEEPER

**1** Lift one side of the bedside sleeper approx. 15° and move as desired. There are small wheels under each leg.



**⚠ WARNING** NEVER MOVE THE CO-SLEEPER WHILST THE BABY IS IN IT.

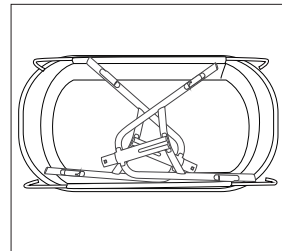
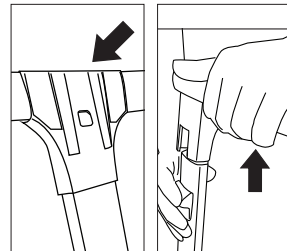
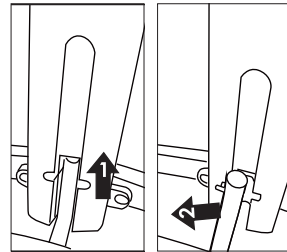
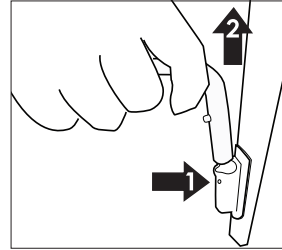
# DISASSEMBLY

- 1 Disconnect fixing belts
- 2 Remove basket tubes by pressing silver spring button on the lower leg and lifting.

- 3 Put the bedside sleeper in the lowest position, lift side of the frame to remove spring button from frame, repeat on the other side.

- 4 Press button on the inside of the upper legs, and pull upwards to remove legs from co-sleeper frame.

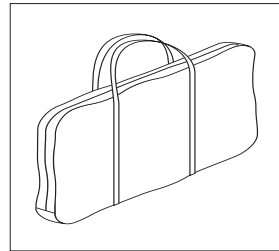
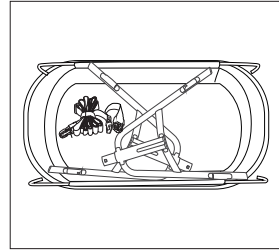
- 5 Put basket inside bedside sleeper.



# DISASSEMBLY

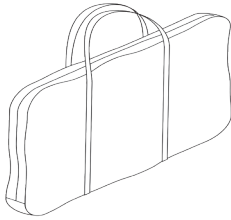
- 6 Place legs, flat side down, one on top of the other facing opposite directions with the legs flush against bedside sleeper drop side. Add in other accessories, fixing belts and mosquito net.

- 7 Place in carry bag with drop side to the bottom of the bag. Now you are ready to take your bedside sleeper anywhere!

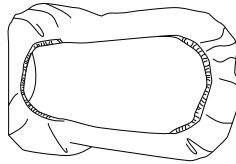


# ACCESSORIES

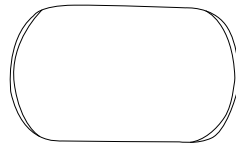
**Carry bag**



**Fitted sheet**



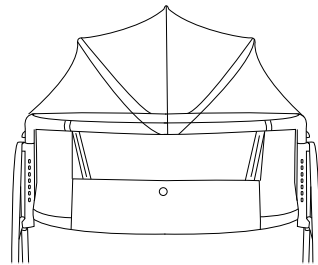
**Waterproof  
mattress cover**



---

## **Mosquito Net**

Attach the mosquito net when in standalone sleeper mode. Pull elasticated ends of the mosquito net over the foot ends of the sleeper and secure the press studs underneath the metal frame on each long side



## KEEPING YOUR POD IN TIP-TOP SHAPE

Keeping your POD bedside sleeper in good working condition & ensuring that it lasts as long as possible requires regular maintenance.

### **Regular maintenance should include:**

- Inspecting all parts regularly, including buttons, buckles and fixtures to ensure they are secure, moving freely and in full working order.

### **Accessories and replacement parts:**

- Do not use parts or accessories that are not approved for use with the Babybee POD bedside sleeper. Doing so may be unsafe and may also void your warranty.

### **Cleaning instructions:**

- The bedside sleeper body and mattress may only be spot cleaned.
- To keep your fitted sheet in the best condition, machine wash on a cold, gentle cycle.
- Air dry in shade thoroughly before reuse and avoid direct heat and sunlight.
- Do not wring or rub excessively.
- Do not tumble dry.
- Never use bleach.
- Do not iron.
- Do not dry clean.
- Ensure the product is fully dry before use or storage.
- Wipe the frame using warm water and a mild detergent. Never use bleach.
- Never clean any part of the crib with abrasives, ammonia based, bleach based or spirit type cleaners.
- Always ensure the bedside sleeper is stored in a dry place to prevent mould or mildew developing.
- Store away from any heat sources and not in the sun.

# WARRANTY INFORMATION

**Your POD bedside sleeper comes with a 2 year defects warranty to cover against faults in materials and workmanship when your bedside sleeper is used under normal conditions, according to our user manuals and technical specifications.**

The benefits under our warranty are in addition to other rights & remedies under the law in relation to consumer goods: Our goods come with guarantees that cannot be excluded under Consumer Law in the country of purchase. You are entitled to a replacement or refund for a major failure and for compensation for any other reasonably foreseeable loss or damage. You are also entitled to have the goods repaired or replaced if the goods fail to be of acceptable quality and the failure does not amount to a major failure.

The warranty period starts from the date that your bedside sleeper is dispatched from our warehouse and is valid in the country of purchase only.

To make a claim email us at:  
**[au.support@babybeeonline.com](mailto:au.support@babybeeonline.com)**  
 or **[nz.support@babybeeonline.com](mailto:nz.support@babybeeonline.com)**

Babybee reserves the right to repair, exchange or replace the damaged item with a replacement part.

**The warranty is not valid in the following cases:**

- Defects or faults resulting from improper assembly, care, or use as outlined in our user manual.
- Defects or faults resulting from an accident, airline or transport damage.
- Normal wear and tear, including scratches to the frame or colour fading of the fabrics.
- Corrosion, mould or rust due to extreme environmental conditions, including high humidity, or due to lack of regular maintenance.
- Products that are purchased secondhand or from an unauthorised distributor.
- Using a part or accessory that is not approved for use by Babybee.
- Claims from anyone other than the original purchaser (i.e. no longer valid if gifted or sold to another individual).
- Damage resulting from extreme heat conditions (i.e leaving in car on hot days).

SWEET DREAMS!

*team babybee*

Designer Style. Unbeatable Value.

 **babybee**

---

MODEL: BABYBEE POD

VERSION: 3 | MAR 2023

*Slight variations in the design of your bedside sleeper to the images shown in this manual may be present. Most recent versions can be found on our website.*

---

**[babybeonline.com](http://babybeonline.com)**