



media bros

PRODUCT CATALOG

FOR EXTRACTORS BY EXTRACTORS



TABLE OF CONTENTS

05	About Media Bros
06	Hydrocarbon Media
08	Hydrocarbon Media / Value
09	Carbon Media
12	Carbon Media / Value
13	CO2 / Multi-Solvent
14	Product Usage Guide
17	Hardware
22	Contact Us

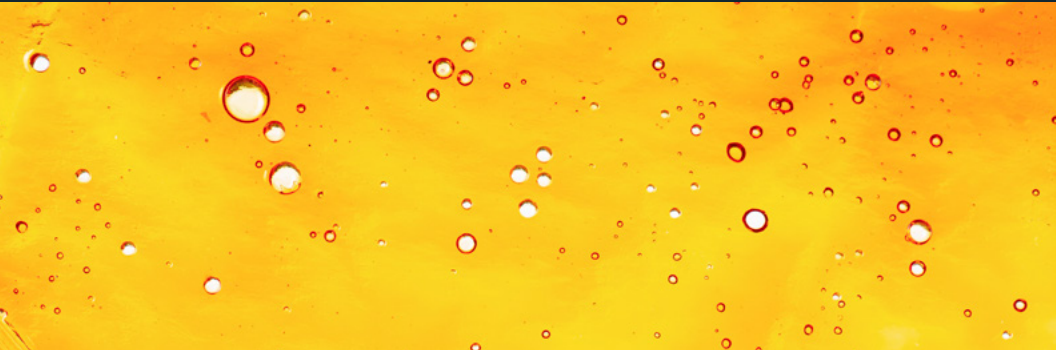
If you don't find exactly what you're looking for, don't worry! We're happy to create a custom proprietary blend tailored to your specific needs. Simply reach out to us and let us know what you're looking for, and our team will work with you to create the perfect blend that exceeds your expectations.



ABOUT MEDIA BROS

Media Bros was founded with a scientifically engineered approach to improve existing extraction technologies. We are a group of chemical engineers, mechanical engineers, scientists, professional extractors, and growers. Focusing on performance in quality and throughput, our team set out to change the industry. We also wanted to change how customers were treated and how information was shared.

We wanted to become a knowledge center with the best-in-class customer service in the industry. In creating solutions for the extractor, we help our customers with fast response times, a deep knowledge base, and practical information for every level of extractor out there. Founded in Portland, Oregon, we are bros here to hook you up. We network. We educate. We engage. We put our values ahead of corporate America. We believe that by helping you out, you will keep coming back.



HYDROCARBON MEDIA

CRX™



Our all-in-one inline CRC filter media for light color removal and purification, all while maintaining the most cannabinoid and terpene profiles.

Primarily for fresh frozen material and high-quality biomass needing a light touch up.

Suggested use is 150-250g per lb. of biomass.



Benefits:

- Pre-baked and mixed
- Ready out of the bag
- No pressure drops
- Designed to be safe to handle & easy to use
- Extremely reproducible
- Minimal down time
- Back-end cost savings



CRY™



Our slightly more aggressive version of CRX™ with more bonded silica content, for older biomass or material that needs additional clean up.

Great to mix with CRX™, or as stand-alone media for a more aggressive clean up while still maintaining terpene profiles.

Suggested use is 150-250g per lb. of biomass.



Benefits:

- Pre-baked and mixed
- Ready out of the bag
- No pressure drops
- Designed to be safe to handle & easy to use
- Extremely reproducible
- Minimal down time
- Back-end cost savings



CRX-M™



A slightly finer version of CRX™ designed for systems operating at slightly higher psi. The smaller granule size helps prevent channeling at high psi. We recommend baking for 2-4 hrs. at 200+F.

Suggested use is 150-250g per lb. of biomass.



Benefits:

- Pre-baked and mixed
- Maintain high PSI
- Minimal pressure drops
- Designed to be safe to handle & easy to use
- Extremely reproducible
- Back-end cost savings



CRY-M™



A slightly finer version of CRY™ designed for systems operating at slightly higher PSI. The smaller granule size helps prevent channeling at high PSI. We recommend baking for 2-4 hrs. at 200+F.

Suggested use is 150-250g per lb. of biomass.



Benefits:

- Pre-baked and mixed
- Maintain high PSI
- Minimal pressure drops
- Designed to be safe to handle & easy to use
- Extremely reproducible
- Back-end cost savings



CR41™



Our specialty blend for pre-distillation cleanup. Suggested use is the same as CRX™ & CRY™. CR41™ is suggested for when you need a more complex filter media for light pesticide removal, light heavy metal removal, and additional color removal.

Would suggest CR41™ for biomass tainted with smoke, mold, pesticides and heavy metals.

Suggested use is 150-250g per lb. of biomass.



Benefits:

- Pre-baked and mixed
- Minimal pressure drops
- Designed to be safe to handle & easy to use
- Extremely reproducible
- High quality carbon



B80

Value Line

B80 is a natural and safe solution for extracting cannabis oil. Made from hormite and smectite minerals, it's affordable and effective, with excellent adsorption and filtration properties.

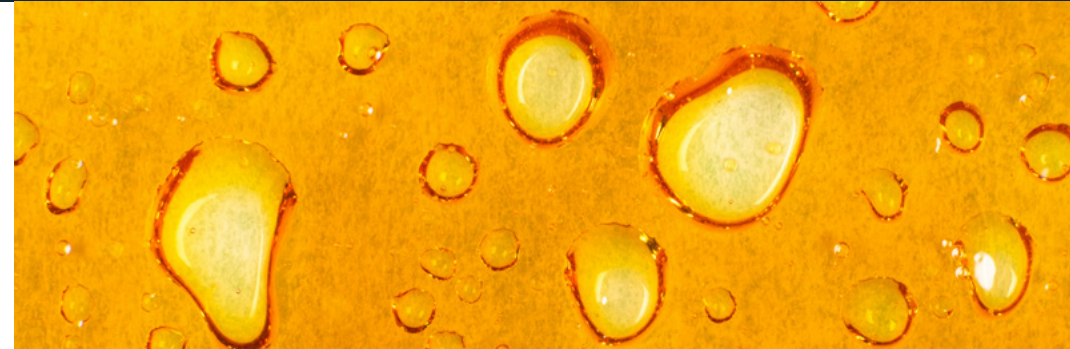
B80 is a natural and safe solution for remediating color and clarifying cannabis oil during extraction, resulting in a consistent, high-quality final product.

Between 5%-10% of total estimated extract in solution.



Benefits:

- Strong metal adsorption
- Effective impurity removal
- Prolonged filtration cycles, low pressure
- Minimized free fatty acid increase
- Safe for food-grade acids



CARBON MEDIA

PERFORM 5000

Value Line

Introducing Perform 5000, the ultimate cannabis oil filtration solution. It efficiently removes impurities like chlorophyll, lipids, and fats, ensuring smooth filtration cycles and integration into existing processes.

No more clogged equipment or laborious preparation with Perform 5000.

Between 5%-10% of total estimated extract in solution.



Benefits:

- Superior oil filtration
- Effective impurity removal
- Enhanced adsorption properties
- Efficient & cost-effective
- Easy integration
- Suitable for Hydrocarbon extraction

CRAC™



Compatible with all processing solvents but suggested for ethanol applications. Excellent for purification, pesticide remediation, and color body clean up.

Would suggest for heavy removal of pesticides, heavy metals, and other difficult environmental contaminants. Performs well in cold processes for lighter remediation or warm for heavier removal properties.

Minimum suggested use is 3-5% m/m of estimated extract in solution.



Benefits:

- Sifted and washed to prevent downstream contamination
- PH neutral double activated
- High surface area
- High quality carbon

PERFORM 6000

Value Line

Perform 6000, a top-tier bentonite clay, purifies oil extracts by adsorbing impurities, thanks to an activating agent that enhances its surface area and porosity.

This process is driven by attractive forces that cause contaminants to stick, resulting in a longer filtration cycle and a cost-effective solution. Elevate your oil with Perform 6000.

Between 5%-10% of total estimated extract in solution.



Benefits:

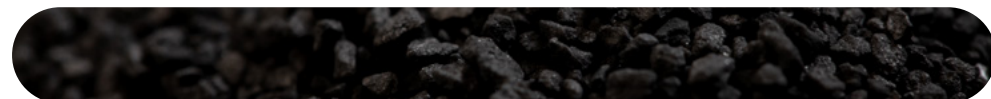
- Formulated clay for impurity removal
- Increased adsorption capability
- Attractive forces trap contaminants
- Long filtration cycles, cost-effective

G-CRAC™



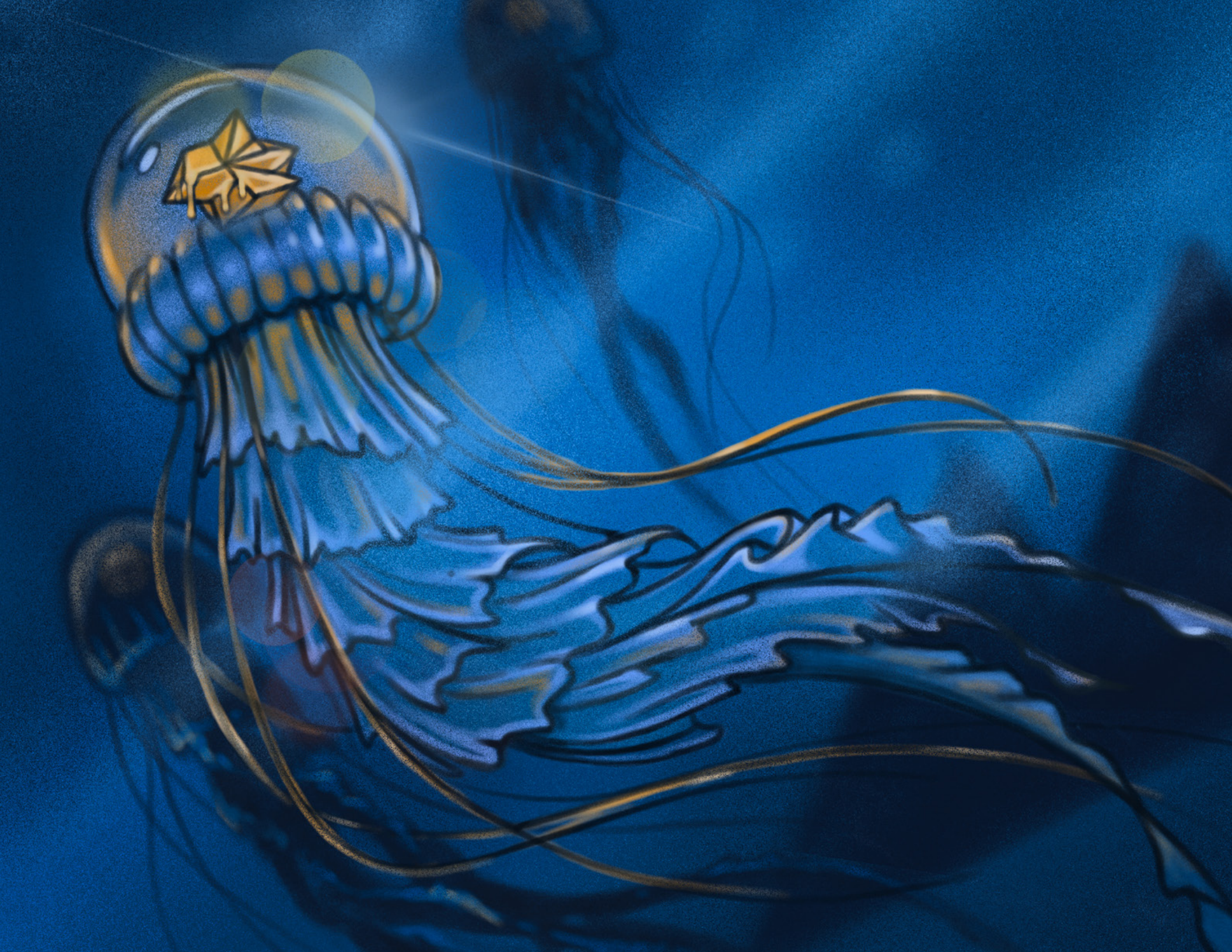
Compatible with all solvents. Suggested for inline BHO extraction. Our granular activated carbon is one of a kind. It provides excellent purification, pesticide, and color remediation while allowing faster flows thanks to its size.

Minimum suggested use is 3-5% m/m of estimated extract in solution.



Benefits:

- Sifted and washed to prevent downstream contamination
- PH neutral double activated
- High surface area
- High quality carbon





CARBON MEDIA

PR-O Value Line

Our proprietary processing method enhances the carbon's natural adsorption properties and its granular form allows for efficient treatment. Introducing PR-O, a filtration solution made with organic coconut carbon, highly effective in removing impurities such as chlorophyll, pesticides, and more from cannabis extract. Choose PR-O for a cleaner, more appealing oil at a fraction of the cost of traditional filters.

Minimum suggested use is 5-10% m/m of estimated extract in solution.



Benefits:

- Organic coconut carbon
- Highly effective
- Cleaner and visually appealing
- Cost-efficient
- Easy integration
- Versatile for extraction



PR-W Value Line

Introducing PR-W Coconut Activated Carbon, the ultimate filtration solution for cannabis oil. Easily integrated into existing extraction processes, PR-W efficiently removes impurities, resulting in a visually appealing, high-quality final product. Its high adsorption capacity for organic compounds and renewable, organic nature make it a cost-effective and eco-friendly choice for producers. Choose PR-W for efficient, quality filtration and hassle-free prep.

Minimum suggested use is 5-10% m/m of estimated extract in solution.



Benefits:

- Organic coconut carbon
- Highly effective
- Cleaner and visually appealing
- Cost-efficient
- Easy integration
- Versatile for extraction



CO2 MEDIA

CR2™

Our CR2™ is the only inline media on the market tailored for CO2 extraction. It offers color remediation, increased purity, and helps remove the bitter "CO2 taste" often attributed to CO2 extracts.

Suggested use is 150-250g per lb. of biomass.



Benefits:

- Pre-baked and mixed
- No back-pressure due to large granule size
- Designed to be safe to handle & easy to use
- Potentially remove the need for post-processing and solvents



MULTI-SOLVENT MEDIA

Activated Alumina

Hydrocarbon and ethanol compatible, primarily for inline CRC applications. Activated Alumina is meant to be added to your filter stack as winterization aid.

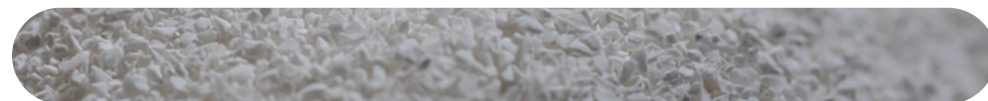
We suggest adding Activated Alumina to the top of most filter stack applications, particularly for fresh material and fresh frozen to help mitigate moisture content in your system, aiding the effectiveness of the rest of the media in your stack by removing some initial fats and lipids.

No upper limit on usage typically around 20-50g+ total in filter stack.



Benefits:

- Pre-baked and mixed
- High flow
- Stabilizes pH
- Winterization aid
- Moisture removal



Silica Gel 60A

Works with standard chromatography solvents and DIY columns. Ideal for inline CRC or post-processing to remove pesticides, heavy metals, pigments, and plant compounds.

Rather than rely solely on silica, customize your filter stack with CRY + Silica 60 to aid in heavy remediation. Adjust the amount of biomass and media to maintain a large cannabinoid profile and consistent flow.

No upper limit on usage typically around 20-50g+ total in filter stack.



Benefits:

- Low moisture content (under 4%)
- Extreme remediation
- Customizable
- Preserving Cannabinoid Profile
- Consistent Flow



PRODUCT USAGE GUIDE

CRX	We recommend using CRX for extracts that need a slight polish and better terpene retention. CRX will provide a light filtration of color and fats/lipids. Use CRX with fresher materials, fresh frozen, buds, 3 month old (or less) trim, etc.	2-3
CRY	We recommend using CRY for extracts that need a little more remediation than CRX. Simply put, CRY is a slightly more aggressive version of CRX. CRY will give you a stronger polish and is better for crystal growth. Use CRY for older biomass and heavier remediation of color and fats/lipids	3-4
CRX-M	We recommend using CRX-M for operators who want the same effect as CRX but are running at higher pressures or systems with size limitations. For extracts that need a slight polish and better terpene retention. CRX-M will provide a light filtration of color and fats/lipids. We recommend using CRX-M with fresher materials, fresh frozen, buds, 3 month old (or less) trim, etc.	2-3
CRY-M	We recommend using CRY-M for operators who want the same effect as CRY but are running at higher pressures or systems with size limitations. For extracts that need a little more remediation than CRX. CRY-M will give you a stronger polish and is better for crystal growth. Use CRY for older biomass and heavier remediation of color and fats/lipids.	3-4
CR41	We recommend using CR41 for extracts that need remediation from environmental contaminants such as smoke, pesticides, and heavy metals. Use CR41 for older or tainted material 6 months old +, pesticides, etc.	3-4
CR2	CR2 is strictly for use with CO2 extraction. We recommend CR2 for operators looking for light color remediation and an increase in purity. Use CR2 for fresher material/trim.	2
G-CRAC	G-CRAC is our granular carbon for heavy removal of pesticides and environmental contaminants where speed and flow are of concern. For BHO, use G-CRAC in conjunction with CR41 for improved remediation results.	4
CRAC	We recommend using CRAC for heavy removal of color, pesticides and heavy metals. You can expect easier distillation in post-processing when using CRAC. Use CRAC for old biomass, environmental toxins, reruns, etc.	3-4
Activated Alumina	We recommend using Activated Alumina as a filter aid in your media stack to help improve overall efficacy by removing moisture as well as some fats/lipids. You can use Activated Alumina when you're wanting to mitigate water contamination for biomass. Activated Alumina also helps with winterization. Use Activated Alumina for fresh or tainted biomass.	1
Silica Gel 60A	We recommend using Silica 60 for use as a heavy color, pesticide, and heavy metals removal. Silica 60 works best as an aid/additive to your filter stack. Silica 60 is suited for chromatography and compound separation. For filtration, Silica 60 offers the strongest remediation. Use Silica 60 for heavy remediation for tainted biomass. Silica 60 can also be used as a good touch up on fresher material.	5
PR-O	PR-O is a cost-effective granular style carbon which allows for fast and efficient remediation of chlorophyll, pesticides, lipids, waxes, fats and other contaminants. We recommend PR-O for overall remediation, compatible with all solvents.	3-4
PR-W	PR-W is a cost-effective free-flowing powdered carbon which will help remove unwanted colors, impurities and contaminants from your extract.	3-4
B80	B80 is a great cost effective solution for both decolorizing and depth filtration when used in conjunction with our other media offerings like CR60 and CRAG you have a highly versatile and reliable filter solution.	2-3
Perform 5000	Perform 5000, with a pH of 2.7 has a high surface area acid activated powder that is ideal for bulk oil filtration and hard to remove color bodies/chlorophyll as well as heavy metals.	4
Perform 6000	Perform 6000 is a cost-effective free-flowing activated bentonite clay powder with a pH of 2.5. This very acidic media is your go to for the most aggressive chlorophyll and color body removal.	4-5

REMEDICATION STRENGTH 1-5 *



*This scale is intended as a rough estimate, the biomass and operating conditions will affect the overall outcome



HARDWARE



CRC Spool

Our cutting-edge 4" Diameter Color Remediation Column (CRC) – is the ultimate solution to elevating the quality of your hemp or cannabis extracts! This high-performance CRC is meticulously designed to purify your extracts, ensuring a final product with unmatched visual appeal and extraordinary taste.

Key Benefits

Advanced 4" Diameter Design	Our CRC comes in a 4" diameter size, making it ideal for accommodating larger quantities of extracts while maintaining exceptional efficiency. The wider dimensions allow for increased throughput, reducing processing time and increasing overall productivity.
Vibrant Color Enhancement	Especially effective for extracts derived from lower-quality plant material, the CRC skillfully removes undesirable compounds such as phospholipids, terpenes, and flavonoids, unveiling a translucent yellow color akin to high-end live resin. Impress your customers with visually stunning extracts that exude quality and excellence.
Superb Flavor Refinement	We understand the importance of taste in the cannabis industry. With our CRC, say goodbye to unwanted flavors that may taint your final product. The filtration system specifically targets the compounds responsible for unappealing tastes, resulting in extracts that boast superior color and delightful flavors.
Dependability & Efficiency	Crafted with precision engineering and using premium-grade materials, our 4" Diameter CRC ensures reliable and consistent performance. It features an intelligently designed filtration mechanism, integrating a specialized filter and a range of top-quality filtering media, such as clay, synthetic magnesium, and silica gel. Trust in its efficiency to remove even the tiniest impurities and achieve exceptional results with every run.



Swagelok Needle Valve

Your Precision Flow Control Solution! Introducing the Swagelok Needle Valve, the ultimate tool for precision flow control. Say goodbye to the inefficiencies of traditional ball valves and hello to smooth, accurate flow control with the fine-threaded stem design of the Swagelok Needle Valve.

Key Benefits

Precision Flow Control	Say goodbye to the inefficiencies of traditional ball valves. The Swagelok Needle Valve offers smooth and accurate flow control, allowing you to precisely regulate the flow rate at every stage of your extraction process.
Gradual Flow Adjustment	Gradually slow down the flow rate of your media as it fills its pores with the fine-threaded stem design of this powerful valve. This ensures optimal extraction conditions for your materials.
Enhanced Performance	Step up your flow control game with this precision valve. It empowers you to achieve the highest quality output in your operations, setting you apart from mediocrity.
Durability	Built to last, the Swagelok Needle Valve features a compact, leak-tight design made from corrosion-resistant stainless steel. You can trust it to perform reliably even in challenging conditions.



Media Bros Filter Screen

Introducing our top-of-the-line 1 and 5 Micron Sintered Disc with a 4” or 6” sanitary clamp connection – a must-have filtration solution optimized for Filter Media. Crafted from high-quality 304 stainless steel, this sintered filter disk delivers unparalleled performance during the extraction and post-extraction processes, ensuring a finer level of filtration for your valuable extracts.

Key Benefits	
Fine Filtration for Optimal Results	Our 1 and 5-micron sintered filter disks are designed to provide finer filtration during both extraction and post-extraction stages. When used in conjunction with ashless filter papers or other filtration media like felt or stainless steel wool, it enhances the filtration efficiency by increasing the surface area, effectively removing unwanted fats, lipids, waxes, and other undesired materials, ensuring a pristine final product.
Advanced Sintered Technology	The Sintered Filters are the result of a fusion of metal particles, creating a robust and rigid filter. This advanced technology ensures an efficient and effective separation between the desired solute and undesirable elements, making it a vital component in any extraction process. You can trust in the reliability and performance of this filtration tool for consistently superior results.
Reliable Separation and Contamination Prevention	The Sintered disc not only provides a reliable and confident separation during the filtration process but also features a welded design that ensures an effective seal. This true seal prevents any undesirables from contaminating your final product, guaranteeing a pure and high-quality extract every time.
Precise Porosity for Debris-Free Extracts	With a porosity of either 1 μ m or 5 μ m, our sintered disc guarantees that no debris or particles over .001 or .005 mm in size will be present in the final stages of production. Rest assured that your extracts will be free from unwanted impurities, meeting the highest standards of purity and excellence.



Bolted High-Pressure Clamp

Elevate your extraction setup with our High-Pressure Sanitary Clamp, designed for 4” and 6” columns and filter plates. This precision-crafted component offers:

Key Benefits	
High Pressure Performance	It handles rigorous extraction operations with ease, maintaining a tight seal even under intense pressure, preventing leaks.
Perfect Fit	Tailored for 4” or 6” components, it ensures a precise connection, eliminating gaps or misalignments that could compromise efficiency.
Robust Build	Crafted from premium materials, it's built to last, withstanding daily extraction demands without performance loss.
User-Friendly	Easy to install and operate, saving you time during setup and maintenance.



FC4080 CRC Flow Controller

Say goodbye to tedious pressure and flow monitoring for in-line CRC applications. The FC is specifically designed for systems accustomed to powdered CRC media, offering seamless switching between powders and high flow granular media like Media Bros CRX. No need to alter your system setup – the FC4080 CRC Flow Controller operates flawlessly within 40 - 80psi extraction systems.

Key Benefits	
Built with stainless steel	It ensures lasting efficiency even under rigorous conditions.
Flow rates are tailored for hydrocarbon solvents	Making it the perfect addition to your extraction arsenal.



PTFE FDA Gasket

Introducing our highly dense Polytetrafluoroethylene (PTFE, commonly referred to as “Teflon,”) Tri-Clamp Gasket. Now available in 1.5”-4” and 6” sizes. This gasket offers unparalleled versatility. Our PTFE Tri-Clamp Gasket ensures the utmost reliability and longevity in demanding environments with its remarkable resistance to corrosive liquids, including ethanol.

Key Benefits	
Temperature-Resilient Performance	Spanning an impressive temperature range from -100°F to 400°F, this gasket is a true all-rounder, suitable for extreme cold and hot conditions.



End Cap Reducer

The Ulti-Filter Adapter/Reducer – is the perfect companion for the Ulti-Filter Max Kit. This precision-engineered accessory ensures smooth compatibility, streamlines your workflow, and bridges the gap between 3” column diameter equipment and 4” or 6” sanitary fittings.

Key Benefits	
Effortless Compatibility	The End Cap Reducer seamlessly connects your 3” Ulti-Filter Max to 4” or 6” sanitary fittings, enhancing your kit's compatibility. Paired with the right-sized PTFE Gasket and Bolted High-Pressure Clamp guarantees a secure, efficient fit for your Ulti-Filter Max components.
Streamlined Workflow	Eliminate bottlenecks caused by equipment mismatches.
Precision Engineering	Crafted for durability and longevity, the Ulti-Filter Reducer stands up to rigorous lab use.



Ulti-Filter Max .2µm Kit (Housing & Six Filter Cartridges included)
Available in 5-inch and 10-inch Sizes

Introducing the Ulti-Filter Max, the ultimate micron and sub-micron filtration solution. With its high surface area, pleated construction, and high-efficiency filter material, this disposable filter offers unparalleled ease of use. The Ulti-Filter filters at 99.98% absolute filtration at .2µm to accommodate different filtration needs. Say goodbye to clogs and inefficiencies with this long-lasting filter that ensures a steady flow rate even with extended use. The interchangeable filter cartridge, sold separately, allows for a fast switch without disrupting efficiency.

WHAT'S INCLUDED

This includes the Housing and 6 Filter Cartridges.

Key benefits:

- Replaces the sintered disc and never clogs
- Long-lasting performance
- Provides 0.2-micron filtration for fine particulate filtering
- Features a flexible and dynamic membrane that won't crack or clog
- Can be used for an extended period without flow rate reduction
- Offers particle size exclusion and effective particulate matter filtering



5" Housing 10" Housing

Ulti-Filter Max .2µm Housing

The Ulti-Filter Max Housing comes in a 5" or 10" size. This item includes: Spool/Column, Donut Piece 3" Gasket, 3" Tri Clamp.

Key Benefits	
Robust Construction	Built tough for demanding filtration tasks while maintaining superior efficiency.
Easy Installation	Hassle-free setup and maintenance, engineered for seamless Ulti-Filter Max cartridge integration.
Effortless Cartridge Replacement	Quick and secure swaps, precision-crafted to prevent leaks and ensure clean results



Ulti-Filter Max Filter (6-Pack)

Introducing Ulti-Filter Cartridge Replacements: Your key to maintaining the exceptional performance of your 5" or 10" .2µm sub-micron Ulti-Filter without multiple micron stages.

Key Benefits	
Seamless Replacement	Keep your filtration system running smoothly with these easy-to-install cartridges.
Enhanced Filtration	Maintains optimal sub-micron filtration efficiency, just like the Ulti-Filter.
Convenient Packs	Available in packs of 6 for your ease and savings.
Provides 0.2-micron filtration	For fine particulate filtering



CRC Column Mounting Bracket

Discover the ultimate convenience with our Mounting Bracket for 4” CRC Columns. Designed to enhance your extraction process, this bracket offers an easy open and close system for quick change-outs, saving you valuable time and effort.

Key Benefits	
Effortless Installation	The bracket mounts firmly to any square tubing on your skid or rack, ensuring a secure and stable setup. With its user-friendly design, installation becomes a breeze, allowing you to focus on what truly matters – producing top-quality extracts.
Swift Change-Outs	Say goodbye to complicated and time-consuming column replacements. Our mounting bracket’s easy open and close system enables rapid change-outs, optimizing your workflow and maximizing productivity.



Pressurized Hose

Introducing our Pressurized Hose with a 1 1/2” sanitary clamp to 1/2” tube compression fitting – the ultimate solution for seamless, fluid transportation in your operations.

Key Benefits	
Superior Connection	Our hose features a secure 1 1/2” sanitary clamp to 1/2” tube compression fitting, ensuring a tight and reliable connection. Experience peace of mind knowing that your fluid transfer processes are efficient, safe and leak-free.
Optimized Performance	This hose is designed for pressurized applications and delivers exceptional performance even under high-pressure conditions. Trust in its durability and strength to handle demanding tasks with ease.
Versatile Applications	Our pressurized hose is the ideal choice for various applications from food processing to pharmaceutical industries. Its adaptable design ensures versatility, making it a valuable asset in your operations.

TECHNICAL SUPPORT

Need technical assistance? Contact us at sales@mediabros.store. Looking for a retail store in your area? **Simply scan the QR code for a list.**



(503) 308-7138 / WWW.MEDIABROS.STORE



WAREHOUSE (SHIPPING & PICKUP)

866 N COLUMBIA BLVD, STE B208
PORTLAND, OR 97217






This ain't just our freshest catalog – it's a whole new level of ingenuity.
Tear it, fold along the crease, and voilà! You got yourself the ultimate rolling tray.
Stoner innovation at its finest, bro

 media bros
WWW.MEDIABROS.STORE

 @MEDIABROSUSA

 @MEDIABROS.STORE