



## Texense ShifTrig+ GSTN8 (Male)

Stand alone gear shift device Tension/Compression model + relay & setting plate

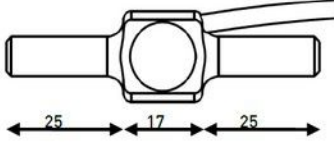


### Gear Shift Specification

**Range**  $\pm 1000\text{ N}$   
**Overload**  $\pm 1500\text{ N}$   
**Accuracy** 5 %  
  
**Supply voltage** 5 to 16 V  
**Supply current** 8 mA  
**Analog signal (white wire)** 0 - 5 V  
**Offset (no force)** 2.5 V  $\pm$  25 mV  
**Cut off frequency** 30 Hz  
**On/Off output (green wire)** NPN Open collector, normally open max 16V, 20mA  
  
**Debounce Time** 30 msec

**Offset drift with temperature** < 10 mV

**Dimension M6 ends female**



**Material** Stainless Steel  
**Weight (without cable)** 25 g  
**Protection** IP 63

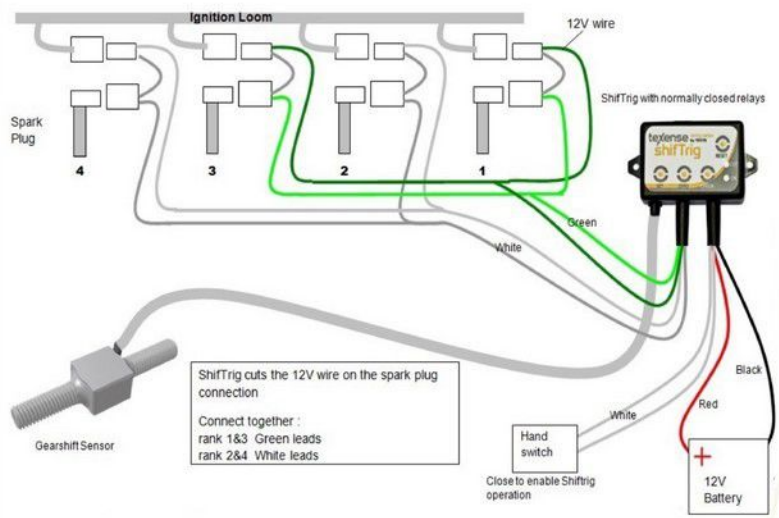
**Vibration test** 20 Gpp 5'  
**Shock** 500 G

**Operating temp** 0 to + 85°C  
**Storage temp** -20 to +125 °C



### Setting Plate Specification

6 setting levels for cut off time  
 6 setting levels for force threshold  
 1 wiring room



Red Led Flashes	Cut Time	Force
1	30msec	40 N
2	40 msec	80 N
3	50 msec	120 N
4	60 msec	160 N
5	70 msec	200 N
6	80 msec	240 N

Order of changes  
1 → 2 → 3 → 4 → 5 → 6 → 1 → 2 → 3 ...

In the interest of continuous product improvement, we reserve the right to alter, without prior notice the specifications and features described on this document