



DRY FIX RIDGE STANDARD KIT INSTALLATION GUIDE



BS 5534
FOR
MECHANICAL
FIXING

BS 8612
FOR
PERFORMANCE

BS 5250
FOR
ROOFSPACE
VENTILATION



RIDGE ROLL



UNION



BATTEN STRAP



CENTRE
RATCHET CLIP
Note: The Centre Ratchet
Clip has a screw hole




OUTER
RATCHET CLIP
Note: The Outer Ratchet Clip
does NOT have a screw hole

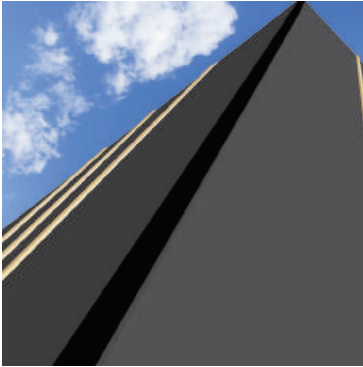


SCREWS & NAILS

	BLACK KIT	GREY KIT	TERRACOTTA KIT	ROLL LENGTH	UNIONS	BATTEN STRAPS	CENTRE RATCHET CLIPS	OUTER RATCHET CLIPS	SCREWS	NAILS (APPROX)
3M RIDGE KIT <small>Suitable for concrete ridge tiles</small>	✓	✓	✓	3M ROLL	7	5	7	14	7	25
6M RIDGE KIT <small>Suitable for concrete ridge tiles</small>	✓	✓	✓	6M ROLL	13	10	13	26	13	45
10M RIDGE KIT <small>Suitable for concrete ridge tiles</small>	✓	✓	✓	10M ROLL	22	17	22	44	22	80
6M RIDGE KIT <small>Suitable for clay ridge tiles</small>	✓	NOT AVAILABLE	NOT AVAILABLE	6M ROLL	20	10	20	40	20	45

Unit 12B, Metcalf Drive,
Altham Industrial Estate,
Altham, Lancashire,
England, BB5 5TU


Tel 01282 930680
sales@easy-trim.co.uk
www.easy-trim.co.uk



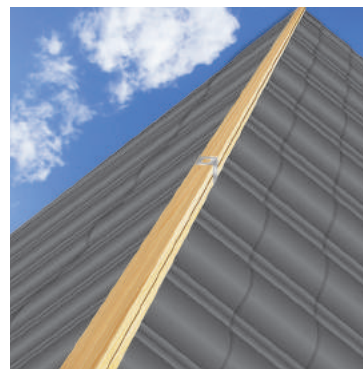
STEP 1
Install the underlay and battens as normal, leaving the underlay 5-30mm short of the ridge on both sides. Do not fix the top tiling batten at this stage.



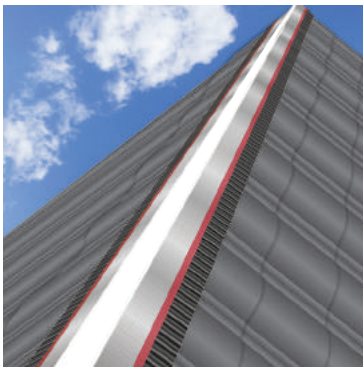
STEP 2
Build up the ridge batten using 25mm thick battens to the required height, usually two battens are sufficient for most profile tiles. Secure the battens in place using the stainless steel batten straps provided. If installing our Dry Fix Verge System, the ridge batten must extend beyond the ridge by 30mm at each gable end.



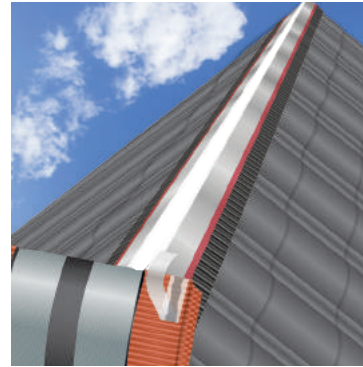
STEP 3
Install the top tiling batten as normal, leaving a 10mm air gap.



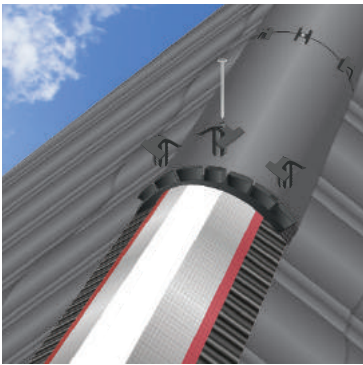
STEP 4
Lay and fix tiles as normal.



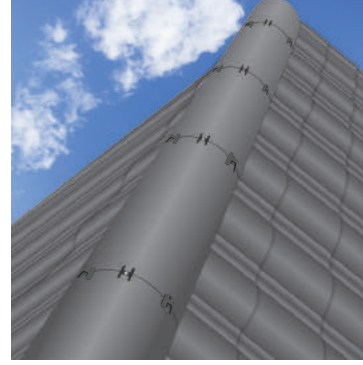
STEP 5
Roll out the ridge roll centrally across the entire length of the ridge batten, using the coloured spine of the roll as a guide over the ridge batten. Secure the roll by nailing or stapling through the white spine. All joints in the ridge roll must be overlapped by 100mm. Leave a 75mm long strip of the roll at each end of the ridge.



STEP 6
Remove the release paper from the butyl adhesive strip on the underside of each edge of the ridge roll, and firmly press onto the clean dry tile on both sides (avoid crushing the corrugations). Continue this process along the entire ridge line. Adhere the roll to the vertical surface of the dry verge unit at the gable end and at the hip abutment, overlap the roll across the hip rolls by 75-100mm, carefully sealing the butyl adhesive in place.



STEP 7
Insert the long and two short ratchet clips loosely into the middle and side slots respectively on the union. Lay the ridge tile on the ridge roll starting at the gable end or hip abutment, and slide the union into the open end. Slide the next ridge tile into the open end of the ridge union and fix the centre union with the screws provided. Then press the outer clips down to secure. Any protruding end of the union can be snapped off or folded behind the union.



STEP 8
Continue this process along the ridge to the end. Secure the ridge end tile through the pre-drilled holes provided or drill a hole through when using reclaimed tile.