

Slate Dry Verge

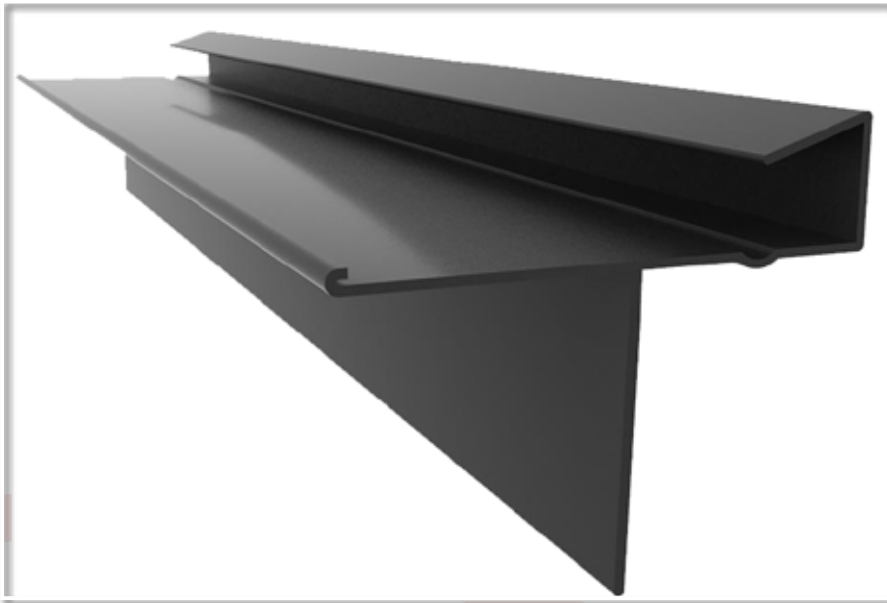
SDV - 214



**DESIGNED FOR USE WITH
MAN MADE SLATE**

2M LENGTHS

COLOUR : BLACK



PRODUCT DETAILS

The use of composition mortar for pointing the verge has many inherent problems, not least the requirement for continuous pointing over the years due to the action of frost, rain and differential movement. The use of traditionally pointed verges is becoming less popular due to the demand from homeowners for a maintenance free property.

Mechanically fixed verges provide secure fixing with none of the long term problems associated with traditional methods and offer highly cost effective solutions for all weather roofing.

- Improved design for better appearance
- Self-draining
- Protects against thermal uplift
- Weatherproof and maintenance free
- Quicker to fit than traditional methods
- Can be fitted in inclement conditions
- No special tools or skills required

