



DISSENT 
— OFF-ROAD —

TIRE CARRIER INSTALL
I N S T R U C T I O N S

1

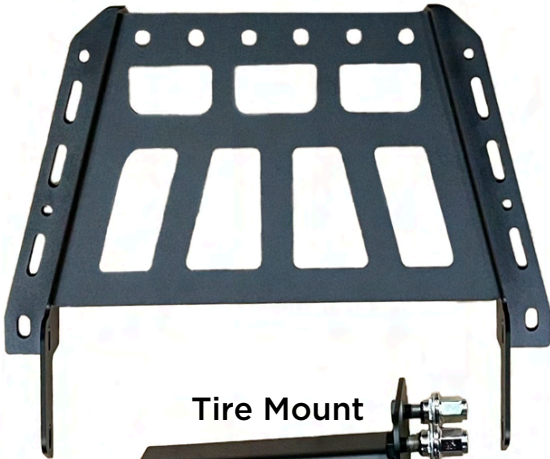
Parts Overview



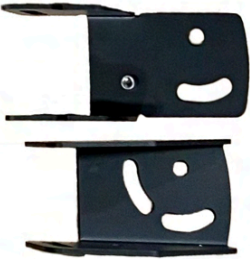
Front Riser



Rear Riser



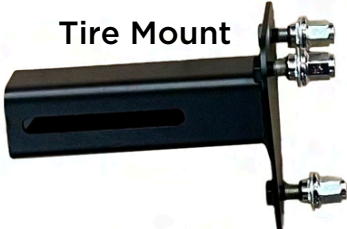
Table



Tire Clamps



Reinforcement Brackets



Tire Mount

Spring Tabs*



Table Leg



Swash Plate



Table Hinges

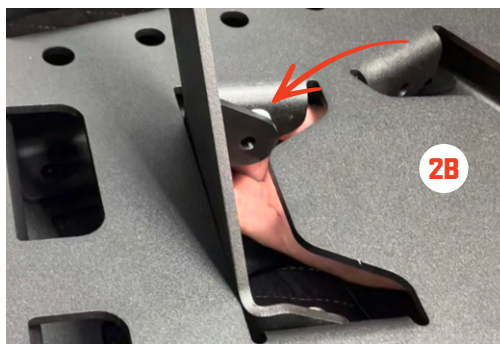
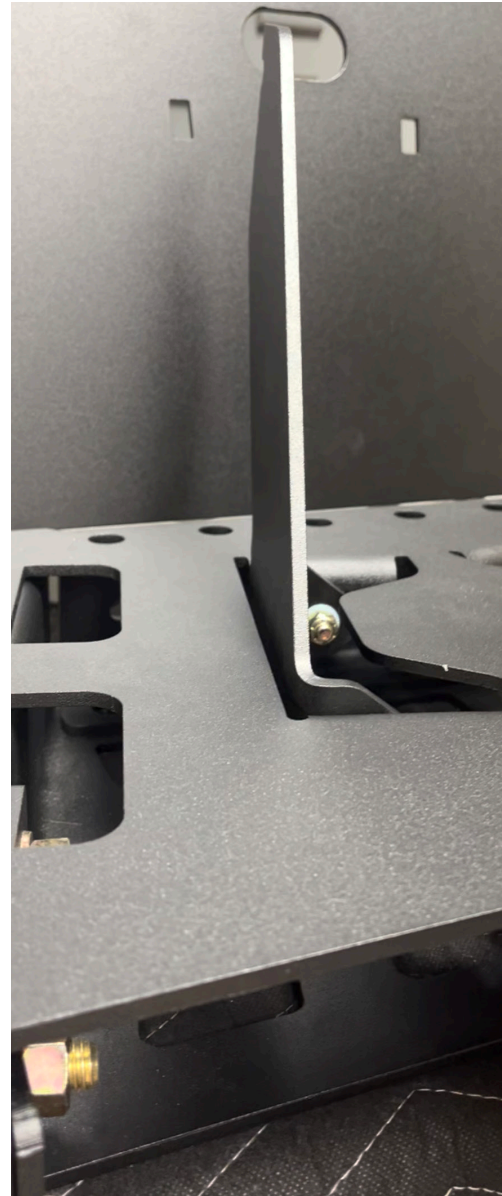
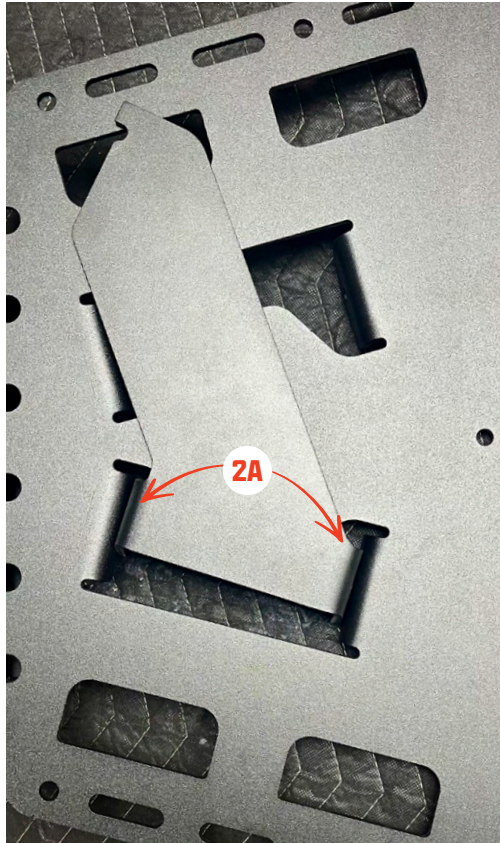


License Plate Brackets

*Spring Tabs are technically part of the swing arm, one tab per arm

2

Install Table Leg

DISSENT
—OFF-ROAD—

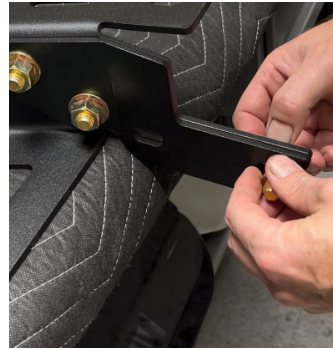
2A The table leg installs using nylon washers so it can open and close without damaging the powdercoat. Each table leg bolt uses three nylon washers, you want a nylon washer against the bolt, one between the riser and table leg and one before the nut.

2B Insert the nylon washers in between the table leg and the front riser's divots as the table leg is put into place.

2C Tighten the table using the bolts and nylock nuts until the table leg has limited resistance in its movement.

*If you are installing your table on the passenger side, flip the table leg to the opposite divets provided on the top riser.

3 Install Reinforcement Plates



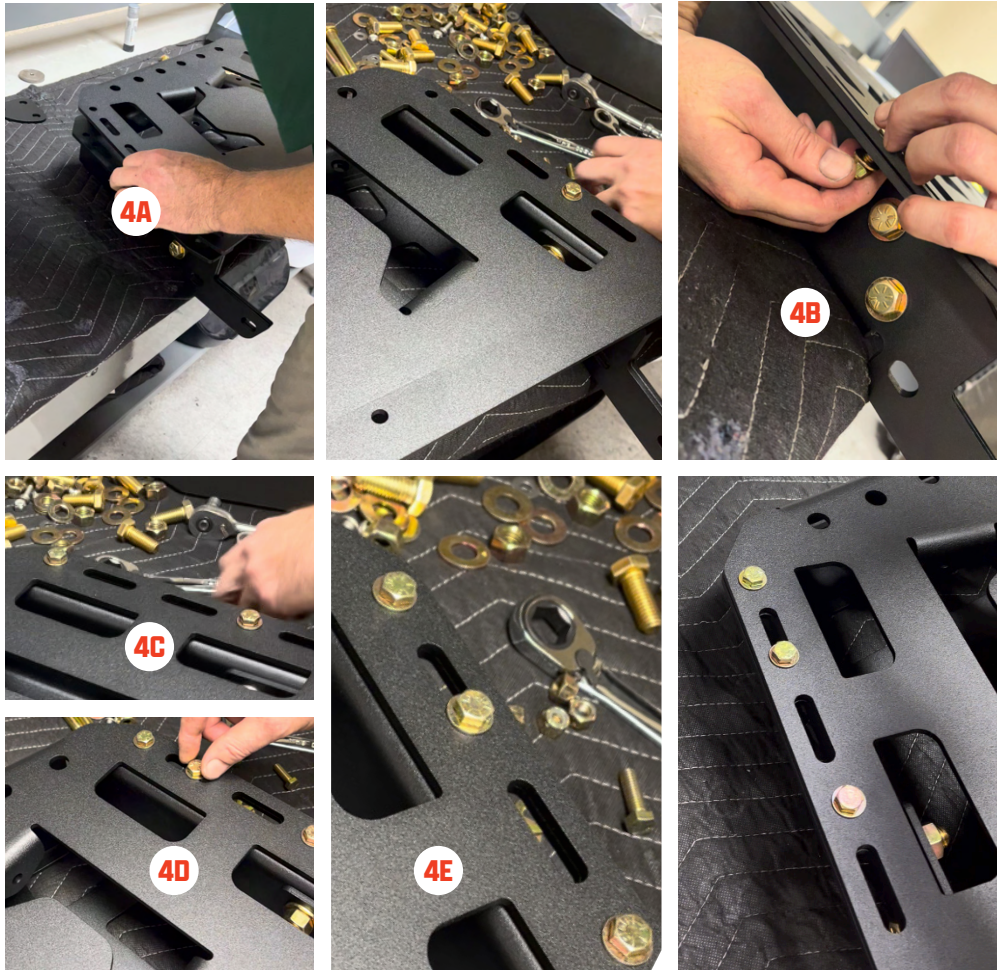
3A Install the reinforcement plates onto the legs of the rear riser using two 1/2" x 1-1/4" bolts (per side) with washers on both ends of each bolt and a nut.

3B The bolt heads should be on the outside of the riser plate and nuts against the reinforcement plate. Do not tighten fully yet, leave finger-tight until step 3D.

3C Temporarily thread through a 1/2" x 1-1/4" bolt with nut to keep the riser and reinforcement plate aligned.

3D Once the holes are perfectly aligned, using a socket wrench and torque wrench, fully tighten only the upper two bolts using maximum pressure to 85 lb/ft.

4 Install Front Riser



4A Slide the front riser into the rear riser, ensuring that all of the bolt holes along either side are perfectly aligned.

*Note: If bolts are installed in wrong direction, you will run into issues installing the table in Step 6

4B Secure the front and rear risers together using six 5/16 bolts with two washers per bolt. Clamp the front and rear risers together like pictured in 4B, taking note of where each bolt goes. Install bolts top down with bolthead facing up as in 4E

4C Moving to the top bolts of the risers, insert 5/16" bolts with washers on both sides of the risers.

4D Finally, move to the sliding bolt holes right below and insert 5/16" bolts. The top two bolts on each side of the risers do not get nuts yet, we install those in the next step.

5 Install Table Hinges and Latch



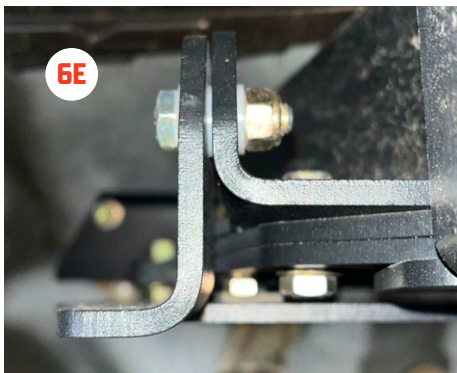
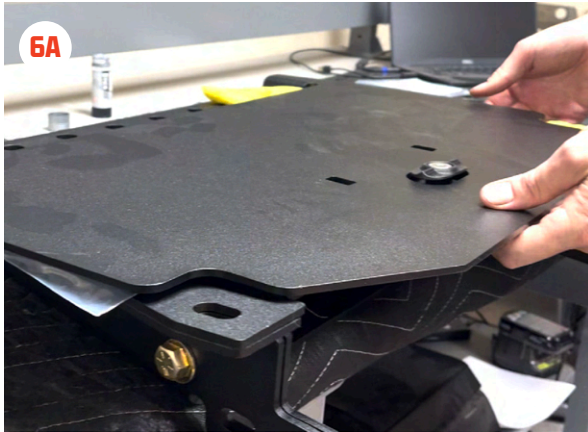
5A Align the table hinges with the top two bolts from step 5. Loosely tighten them to the bottom of the risers using washers with 5/16" nylock nuts.

5B Assemble the table latch. Remove the nylock nut from the end and apply anti-seize to the bolt. Starting with the bolt, insert it into the table latch with a washer on the end followed by a nylon spacer and then an additional washer.

5C Insert the table latch with nylon washers into the bolt-hole, center the front riser. Thread the nylock nut on.

5D Tighten latch until it meets resistance but not too tight where you struggle to turn it.

6 Install Table



6A Use a cloth to cover the exposed bolts on the front riser as you align the table. Set table on top of riser.

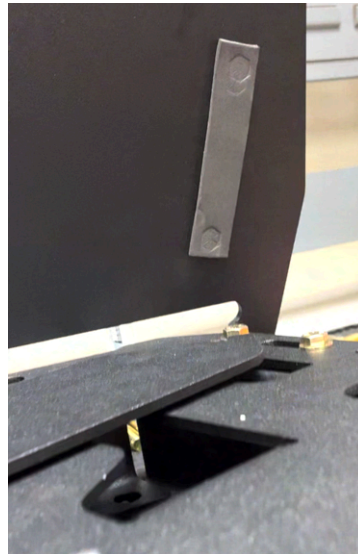
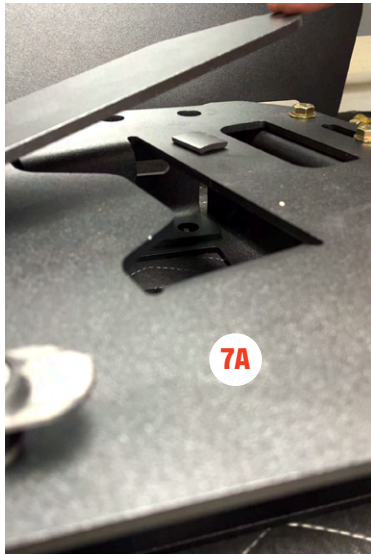
6B Lift the corner of the table with the hinge bracket, insert 5/16" bolt with nylon washer into bolt hole. Once inserted, slip second nylon washer onto the other side of bolt.

6C Once the bolt is inserted through both the riser and hinges, apply the third nylon washer to the end of the bolt.

6D Firmly tighten the nylock nut to the end of the bolt. Tighten until it resembles the image in Figure 6E.

7

Apply Foam Padding



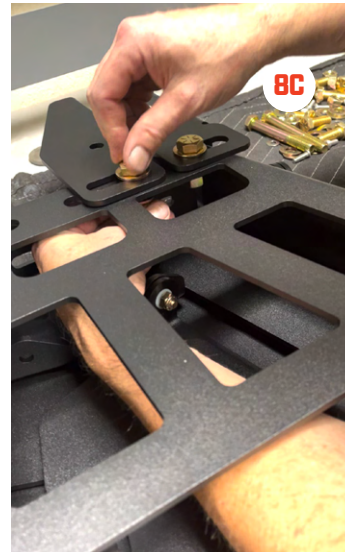
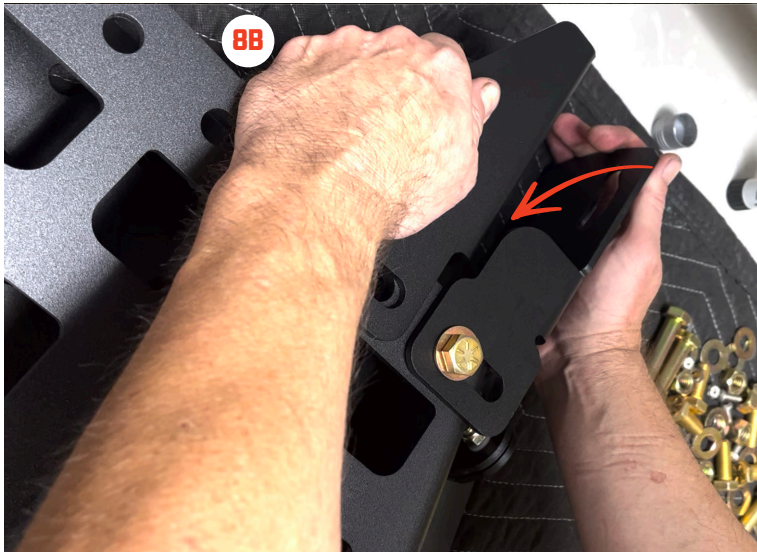
7A Cut a 1" square of the foam strip and apply it to the table leg by removing the backing and positioning it on the front riser. Make sure it aligns with the end of the table leg and firmly press the leg onto the foam. Lift the leg to confirm proper placement.

7B Cut one more inch square of the foam strip and set it aside. Take the remaining longer strip and cut it in half. Apply both longer half strips to the bottom of the table, aligning each strip to the two exposed bolts on the lower portion of the risers.

7C Using the remaining 1" square, center it on the top of the table leg, aligning it with the table latch with the adhesive side facing up. Remove film from adhesive, ensuring the foam square is still centered in position. Firmly press the table down onto the square foam padding. Lift the table to confirm proper placement.

8

Install Tire Clamps



†Photos and references depict Driver Side Tire Carrier. Please adjust accordingly.

8A With the rear riser facing up, slide the outside tire clamp with nut on the far right of the riser.† Align the end of the slide hole to line up with the last bolt-hole on the rear riser. For passenger/RH Tire Carrier, install clamps in same orientation on opposite side.‡

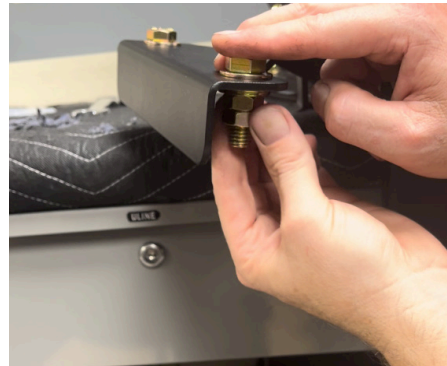
8B The inside clamp has a groove that aligns with the contour of the outside clamp's innermost part where it aligns the sliding hole and rear riser bolt hole. Ensure there is a consistent gap between the inside and outside clamps, with the sliding holes on the clamps aligning with the first two bolt holes belonging to the rear riser.

8C Using 1/2"x 1-1/4" bolt with washers on either side and the 1/2" nut, finger-tighten both the outside and inside clamps to the rear riser.

8D Flip the entire assembly over with the table facing up, using the additional 1/2" nuts and bolts, finger-tighten the inside and outside clamps to the front riser.

‡Positioning of tire clamps is adjustable to accommodate your desired tire position. The position illustrated has been proven efficient for majority of applications.

9 Install Tire Mount and optional Hi-lift



- 9A** Slip the tire mount between the tire clamps whilst simultaneously threading a 4" bolt through. If you purchased a hi-lift mount it attaches to the side of one of the tire clamps like shown in picture 9A
- 9B** Once both bolts are fed through the tire mount, put on the swash plate. Be sure to leave an exposed opening through the third hole of the swash plate.
- 9C** Next put on washers onto each 1/2" bolt and thread on the 1/2" nuts. Then, thread a shorter 1/2" bolt through the remaining hole left by the swash plate, using washers on both sides and a nut.
- 9D** If you are installing the hi-lift mount, it attaches to the tire clamp with the 4" bolts from step 9A. The Hi-Lift mount hardware kit has a lone 5/16" bolt with washer, this bolt goes through the "smile" of the mount at threads into the 5/16" PEM nut pressed into the tire clamp.

10 Attach Tire Carrier to Swing Arm



10A Attach the tire carrier to the swing arm using the bolts provided as pictured in figure 10A. Apply a pressure amount of 85ft/lb when installing bolts.

11 End Product

