

# LC80 Rear Install



Fender flare trim required^

Here are some pictures to help with the installation of the rear cross member and removing the factory one:

The goal is to only cut up the rear cross member and not cut the primary frame rails, to start cut the rear cross member with a sawzall on each side as pictured:





You want to score the welds so we can snap off the crossmember without cutting the primary frame rails







Use a crescent wrench to work the metal back and forth until the weld gives

















This cut is tricky, if you have a body lift (this truck does NOT) there is more space making it easier.





Once everything is cut off, clean up the frame where there is excess metal from where we cut out the cross member

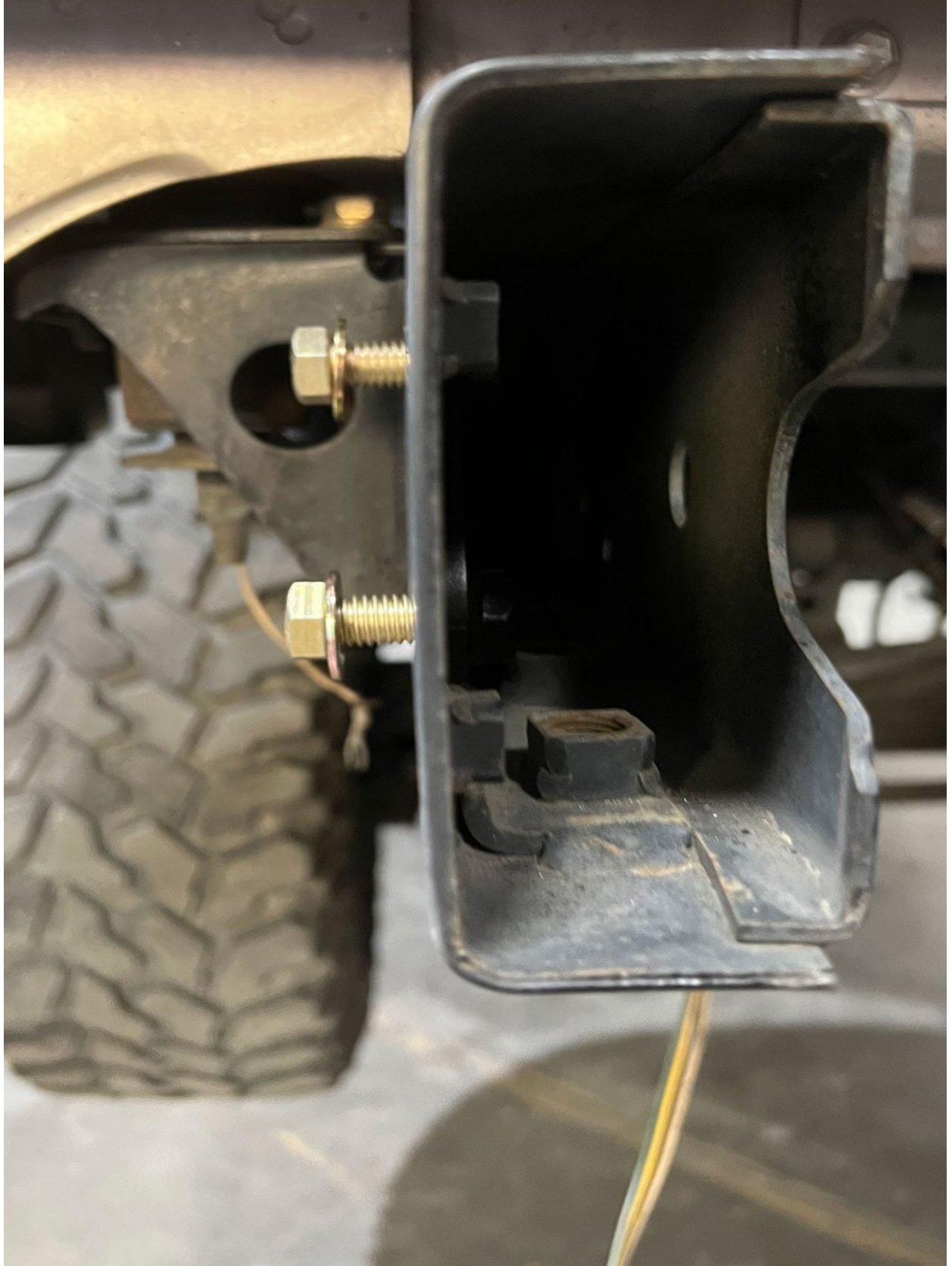




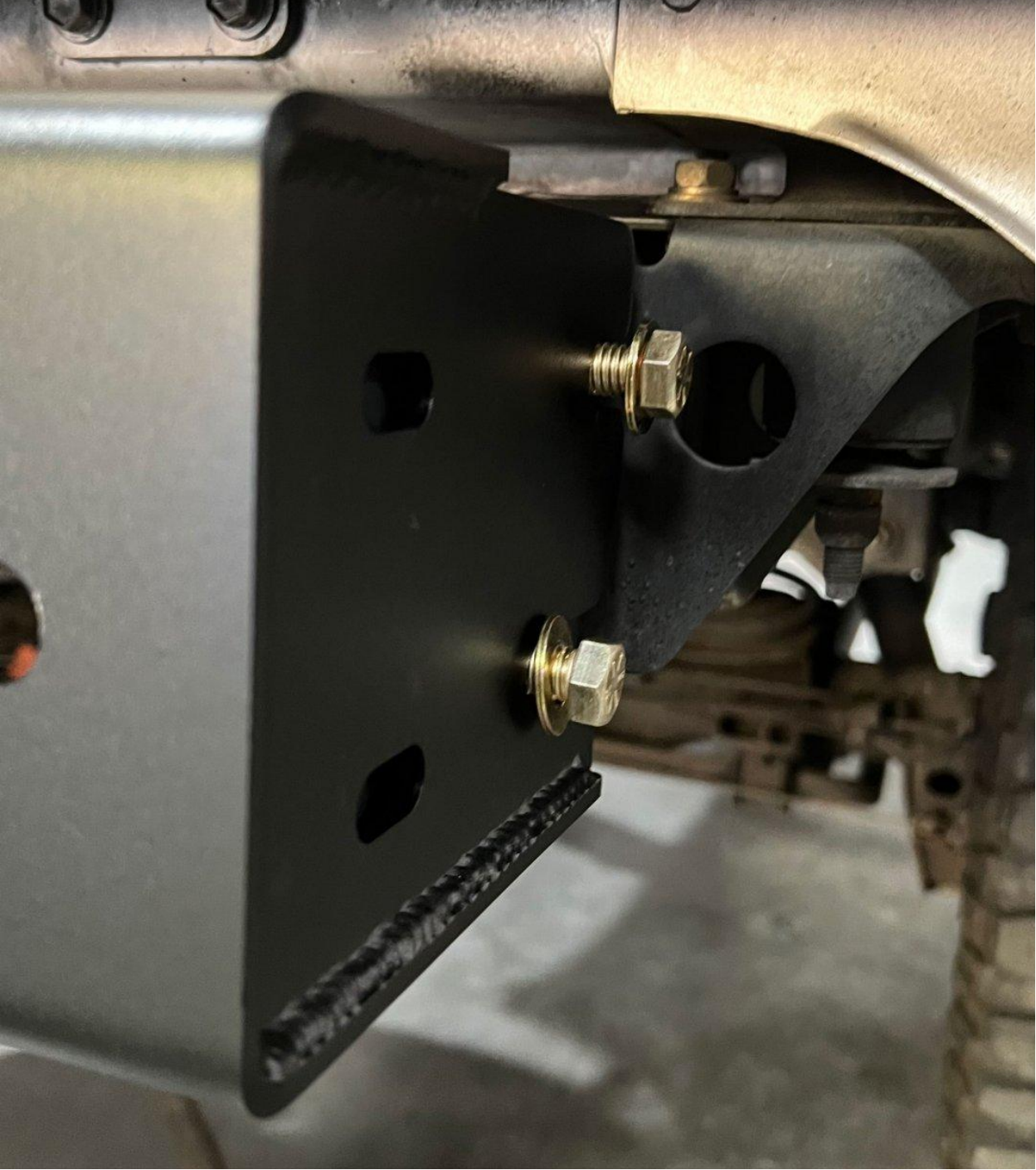
Make sure you get these nut plates inside the frame and start the threads before attempting to put the new cross member over the frame







Cross member is slotted so you can slide it over even with the 7/16 bolts already started





Where all the cross member bolts go:



Next Make sure to install the wing stiffeners (triangular pieces with 3 weld nuts), the trailer plug, and lights into the bumper wings before sliding the bumper wings onto the frame and cross member. The M12 x 40mm bolts that go under the frame in the above photo get installed AFTER the bumper wings get installed

You can use the 100 or 200 rear bumper instructions for swing arm installation.



