

100-SERIES LAND CRUISER AND LEXUS LX470 MODULAR FRONT BUMPER INSTALL INSTRUCTIONS



Remove Factory Bumper

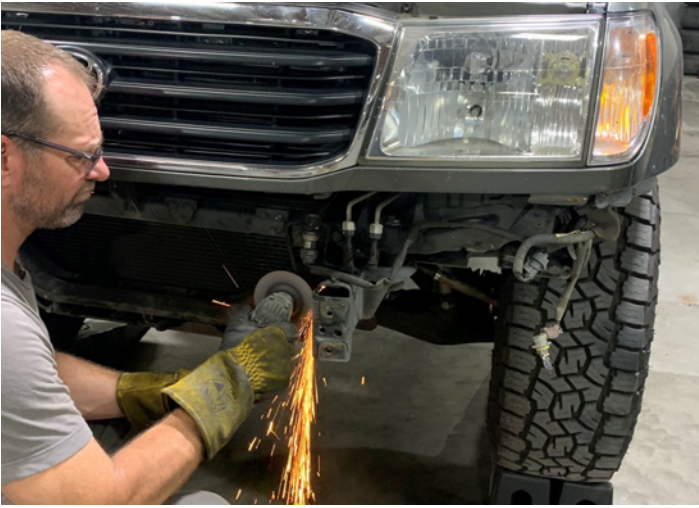


To remove the factory bumper you will need to first remove the grill by unscrewing the three phillips screws and undoing the two tabs at the bottom. Next remove the three clips and 6 bolts (10mm) attaching the bumper to the body. Unplug the fog lights and the bumper should now be free.



Unbolt the "crash bar" (4 14mm bolts) and remove any factory or aftermarket tow hooks/recovery points that are bolted to the bottom of the frame.

Remove Factory Frame Horn Ends



Using an angle grinder you will now remove the two factory frame horn ends that the crash bar was bolted to. This can be achieved in a few different ways. The one being shown in the pictures above shows scoring the weld holding the bracket just enough to free one side, then bending it back and repeating the same process on the other side. However you remove the bracket you will want to take your time to then grind down both sides of the frame completely flush to ensure you will be able to mount the frame brackets.

Make sure to be extra cautious on the driver side to not hit the A/C lines.



Mount the frame brackets with the supplied M14 bolts and large washers with the risers toward the inside of the frame. Tighten to finger tight so that you can make any adjustments needed later.



Now mount the center section of the bumper on top of the frame brackets using the $\frac{3}{8}$ " socket head bolts in the locations shown. Install the bolts from the outside with no washer and a washer and nut on the inside to hold it in place. If needed you can install the top plates onto the center section with the shorter $\frac{3}{8}$ " bolts to give the center section more area to hold.

Make sure to align the remaining 4 holes of the frame bracket and center section before completely tightening the socket head bolts.

It's also a good idea to install the winch in the center section before mounting to check clearance. See last page for ComeUp winch install tips.



Using the socket head bolts to position, you will now temporarily clamp both wings in place to align the bumper. Move the frame brackets forward or back to get a 1/8" - 3/16" gap between the center of the bumper and the lower grill valance. By using the supplied shims in between the bottom of the frame and the frame brackets, you want a minimum of 1/2" gap between the wings and fender. It is not uncommon to use a different amount per side to get the bumper level.

Take your time on this step as it is crucial to ensure proper alignment before the next step.



Once you are satisfied with the alignment and placement of the bumper, mark the outline of all four holes (inside and outside) on both frame brackets.

Now remove the bumper by doing all previous steps in reverse.



Using a good step bit, you will drill $\frac{5}{8}$ " holes on the inside/outside and top/bottom of both sides of the frame. It's a good idea to make your holes as close to the top and bottom of the frame for the most strength and level from inside to outside so that the through bolt installs correctly.



You should now paint the areas on the frame that you have modified to prevent corrosion. Also depending on the condition, you may want to also paint the valence under the grill and headlight area.



We also recommend at this time to remove the windshield washer reservoir cover and paint the reservoir black so that it blends in. Four bolts hold the reservoir and cover in place that need to be replaced after taking off the cover.



You can now begin reassembling the bumper following the previous steps. Before tightening the socket head bolts to mount the center section to the frame brackets, use a screwdriver to perfectly align all of the recovery point cap holes.

Place the same amount of shims you previously used in between the bottom of the frame and frame brackets to get it level.

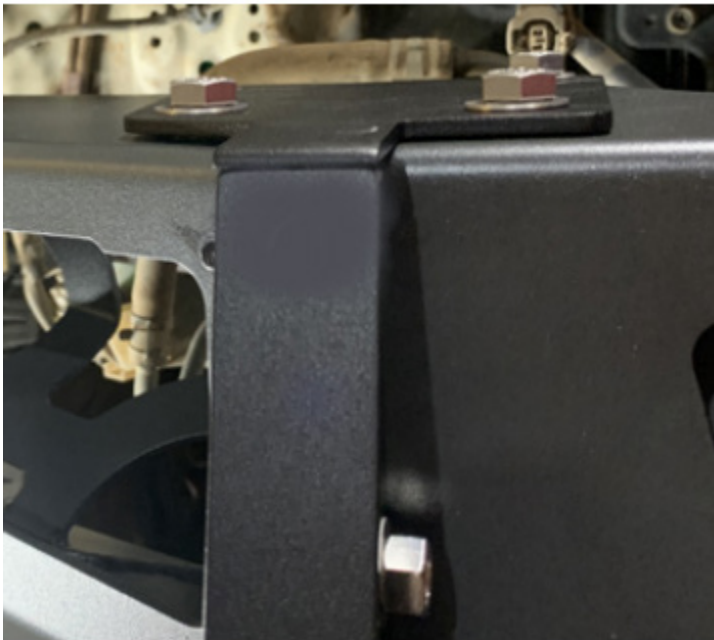


Install the 4" through bolts from the outside of the frame brackets with washers on each side and a 1/2" nut on the inside.



Set each wing into place, and install the recovery point caps with the longer $\frac{3}{8}$ " stainless steel bolts. These bolts will also mount from the outside with washers on each side and $\frac{3}{8}$ " stainless nut.

Be sure to use anti seize to prevent galling.



Now install the top plates (or stinger/bull bar if ordered) with the shorter $\frac{3}{8}$ " stainless bolts (anti seize).

The top plates do have a left/right as the end will be ground to a rounded finish as shown in the picture. The wings and center section have slotted holes allowing you to align them with the recovery point caps.



Install the tie in skid using the separate hardware kit with M8 bolts and nut plates for inside the center section.

Finally install your light plates and logo badge and enjoy your new bumper!



If you purchased a ComeUp winch from us, you can use the supplied bracket to relocate the control box to inside the center section as shown.

Depending on which model you purchase, you may need to clock the motor and clutch handle to the top of the winch.



If you purchased the bull bar for your front bumper, you can use the supplied nut plate to make the wing portion easier to bolt on.