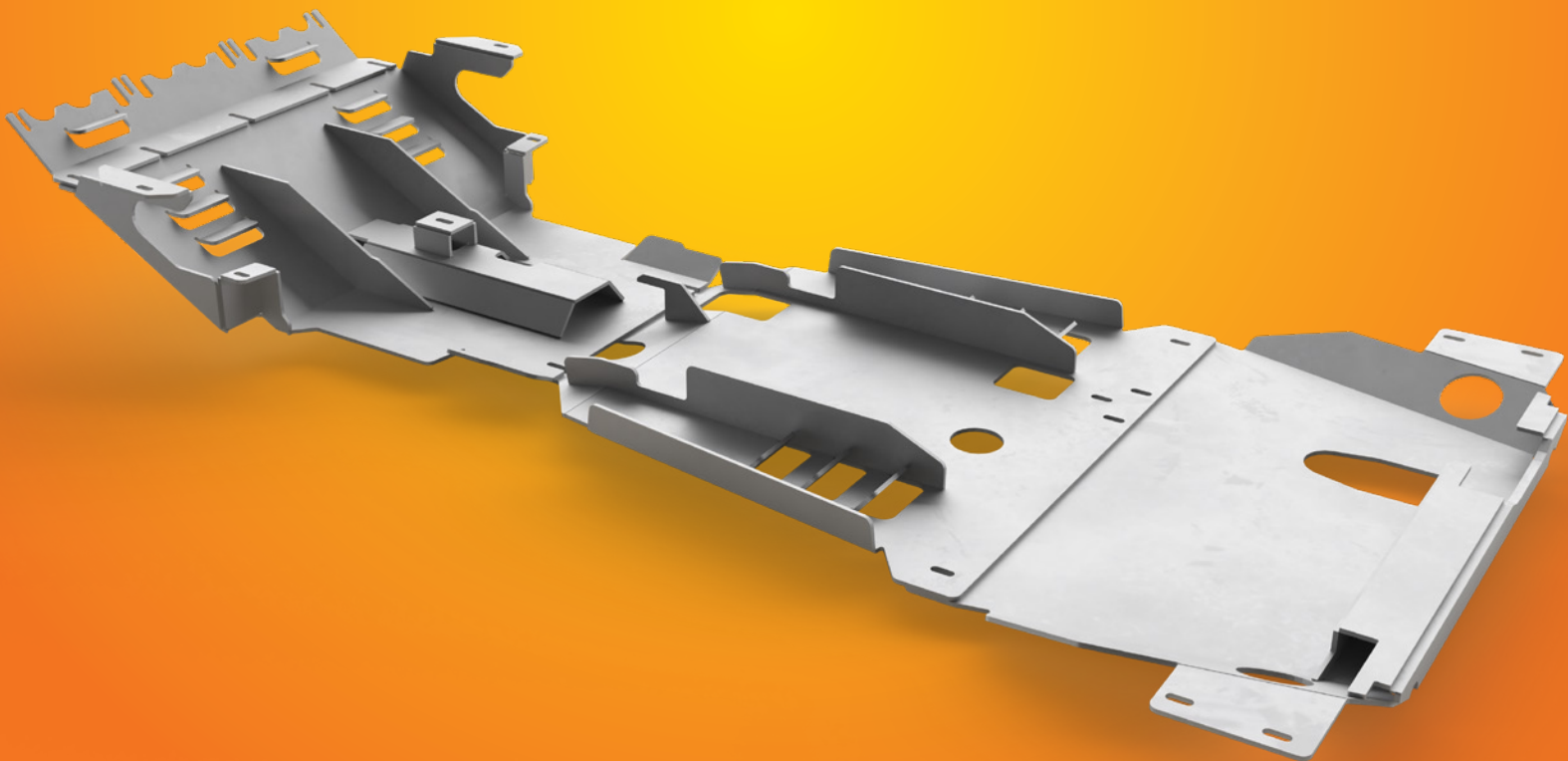
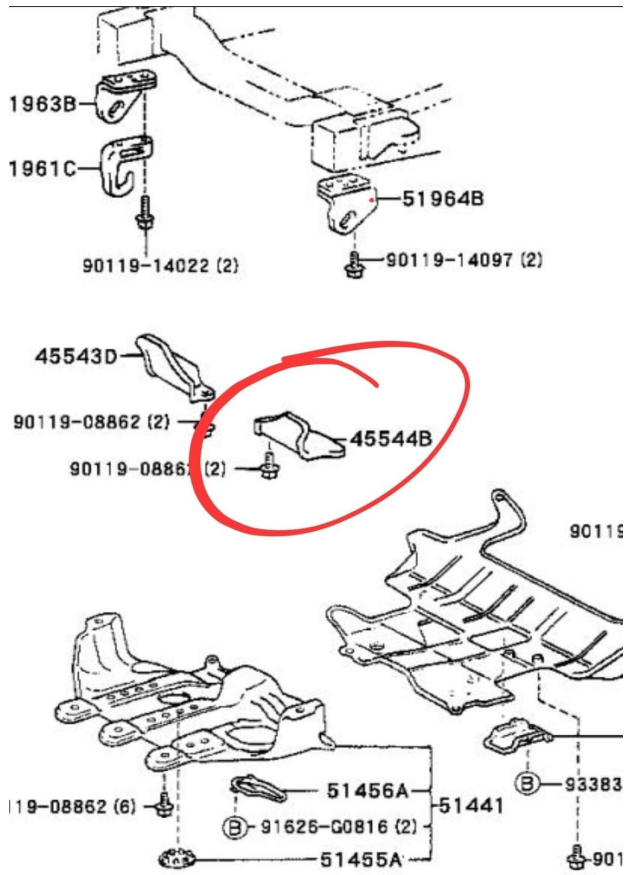


100-SERIES LAND CRUISER AND LEXUS LX470 **SKID PLATE SYSTEM** INSTALL INSTRUCTIONS





Remove factory skid plates and plastic steering rack protector pieces from both sides (circled)

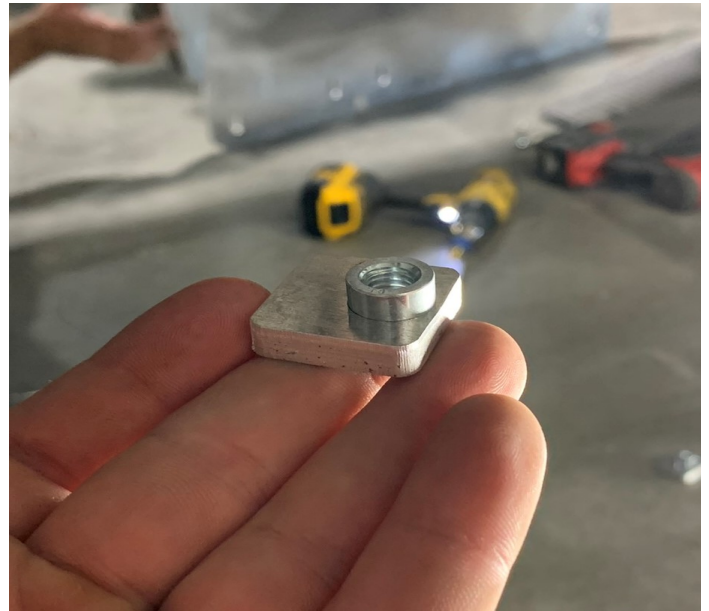


Using a step bit, enlarge the rear most mounting holes on both sides near the torsion bar adjustment bolt to roughly the same size as the one opposite of it.

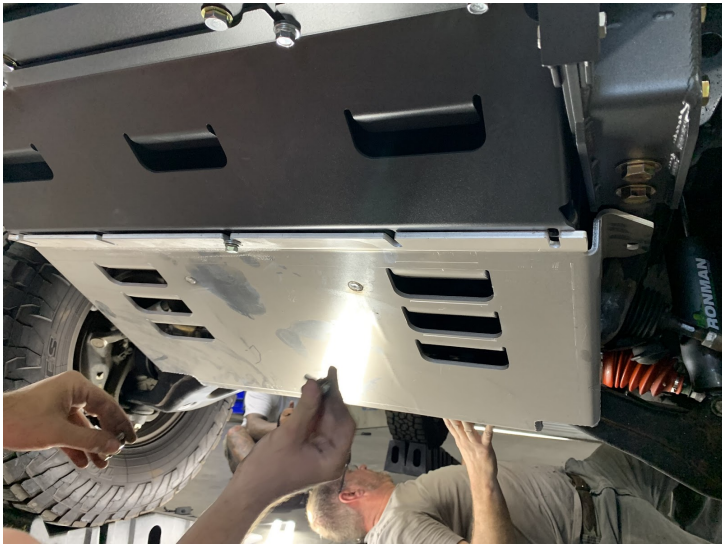
It's a good idea to paint the freshly drilled area to prevent corrosion.

Very loosely install the middle skid plate by using 2 of the counter sink bolts and washers at the front and one in the middle rear. You can use the hook in the front to help you hang the skid, however, if you do not have a diff drop installed you will need to bend the hook out of the way using a crescent wrench and install the longer counter sink bolts with the provided spacers in between the skid plate and crossmember.





Now you can mount the rear skid plate above the middle skid and use the small offset nut plates for the 4 rear most holes with the regular flange bolts and thick washers. Note the orientation of the nut plates when installing is just like in the picture with the pem nut on top. The remaining counter sink bolts and washers can be installed at the intersection of the middle and rear skid.



Install the front skid plate beginning with the rear below the middle skid and use the remaining regular flange bolts and washers to install the front, sides and middle hole locations.



If you have purchased/installed a Dissent front bumper your tie in skid plate will mount using the same bolts as the front skid plate and the included large pem nut plates for the 2 outside holes.

If you have an older style (V2) tie in skid be sure to install the included spacers at the side feet of the front skid to space it down.