



Dissent Land Cruiser 200 Step Sliders

Install Instructions

Thank you for choosing Dissent Off-road step sliders for your Land Cruiser 200 series. If you have any questions about the install or require any assistance, please give us a call at (530) 512-1108 or via the contact form on our website www.dissentoffroad.com.

You will need to remove the factory steps before starting this install.

Parts List

- | | |
|---------------------------------|--------------------------------|
| 02 - Step sliders | 02 - 5/16x1.5" bolts (Grade 8) |
| 06 - Frame brackets | 02 - 5/16" washers (Grade 8) |
| 28 - 1/2"x1" bolts (Grade 10.9) | 02 - Washer plates |
| 28 - 1/2" washers (Grade 10.9) | 02 - 5/16" nut plates |
| 18 - M8 riv nuts | |
| 26 - M8x30mm flange bolts | |
| 26 - M8 thick washers | |

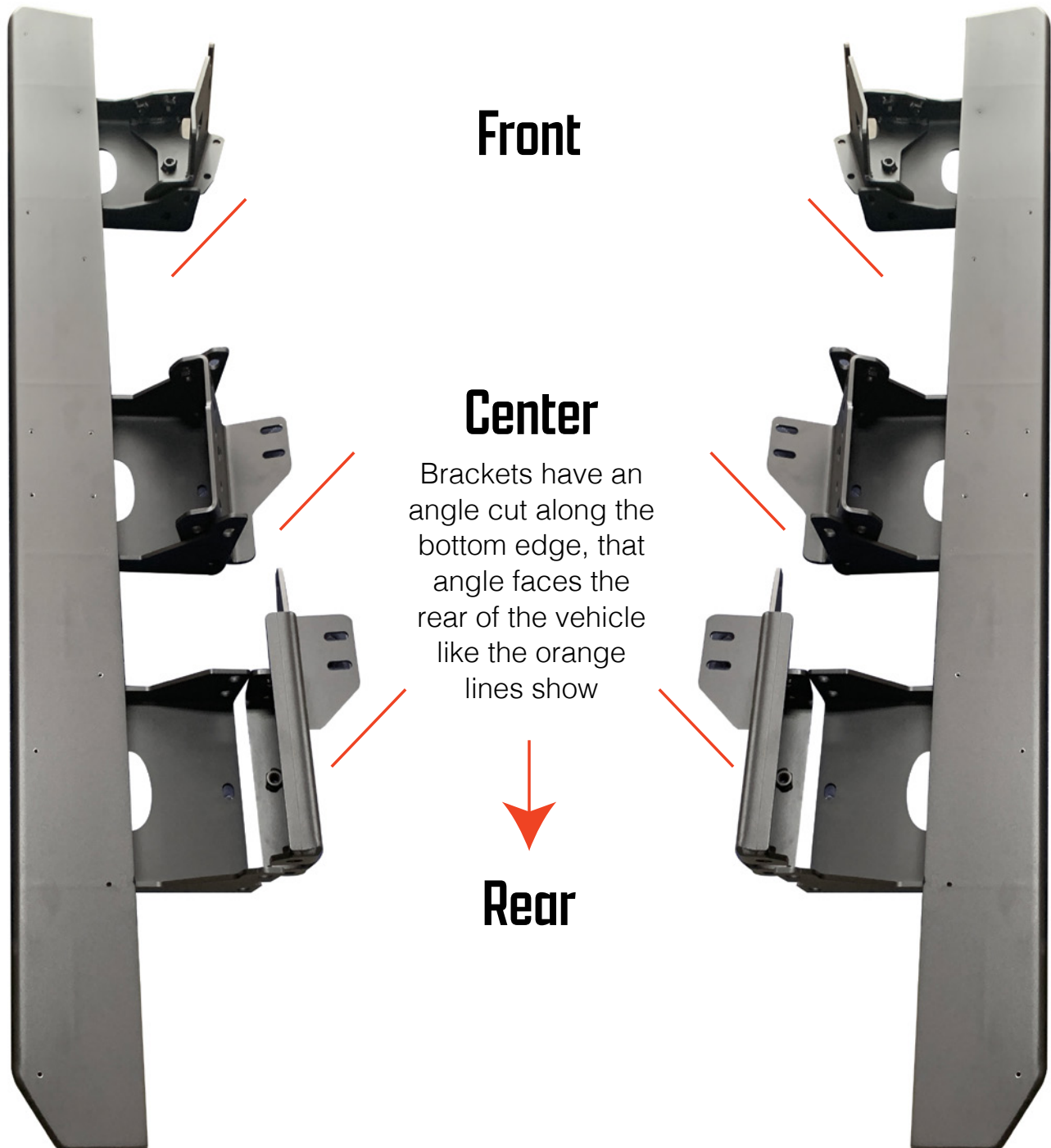
Tools Required

- Sockets/wrenches 1/2" & 3/4"
- Drill
- Rivet nut tool
- Torque wrench
- 7/16" drill bit OR step bit
- Anti-seize compound

Slider & Bracket Orientation

Orient the sliders noting which ends are the front and back. Match the brackets to to each side (driver and passenger), all the brackets have an angle cut to them along the bottom edge,

this angle faces to the rear like the orange lines show in the picture below.



Installation Instructions

Passenger side rear and center frame bracket

Frame brackets are all installed using M8x30mm flange bolts and M8 thick washers.



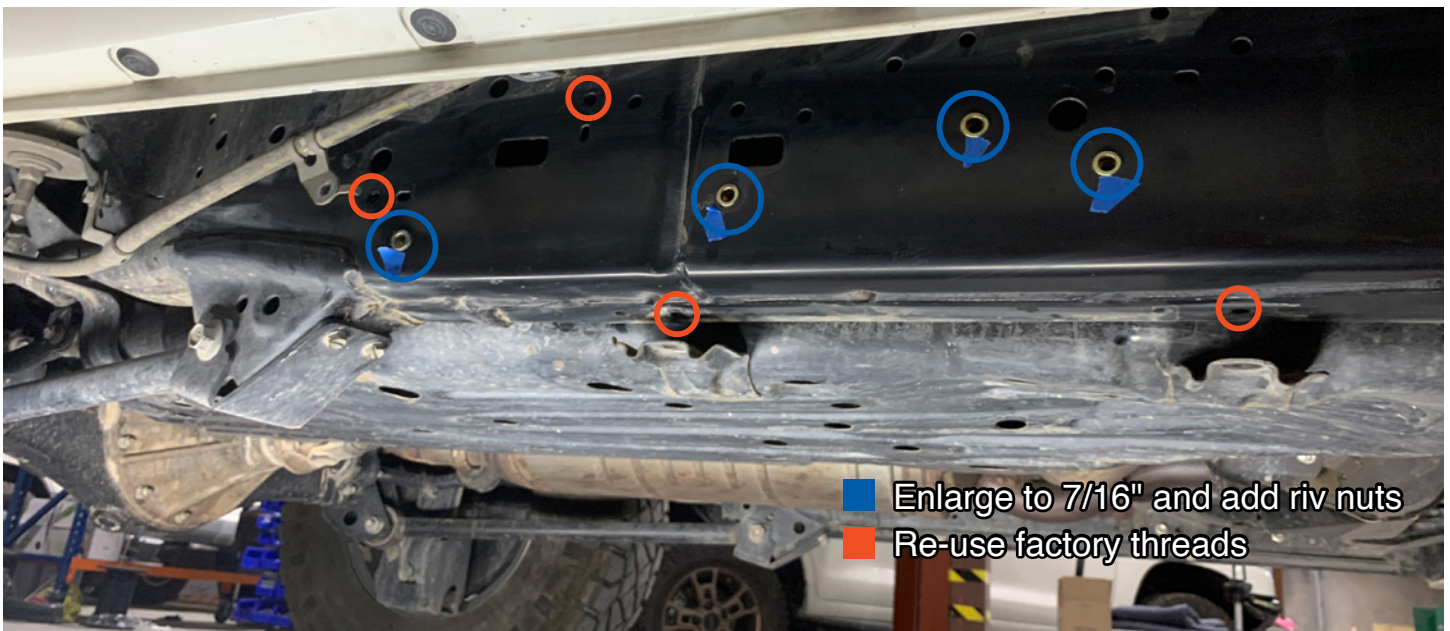
1. Unbolt the ebrake lines from the side of the frame (you will use newly supplied bolts). Getting the ebrake lines over the rear bracket may require you to loosen the ebrake line further back to get enough slack to get the rear bracket in.

2. Remove the two lower bolts that attach the fuel tank skid plate to the bottom of the frame (Note: on the drivers side these holes exist but are not threaded, rivet nuts will be required)

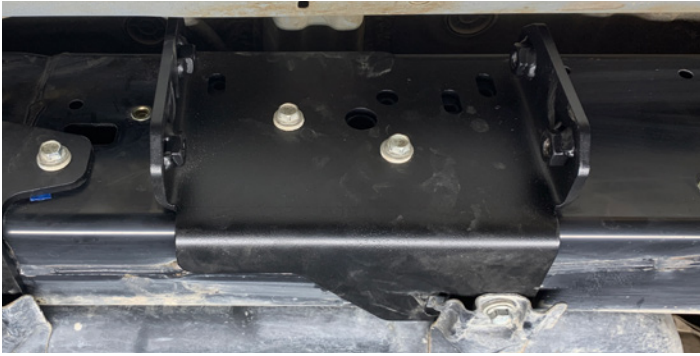
3. Test fit the brackets against the frame lining them up with the holes circled in the photo below. Remove any plastic caps from the frame that could get in-between the frame and the frame brackets

4. Enlarge the blue circled holes to 7/16" in preparation for the nut rivets. We recommend using a step bit to accomplish this. Insert rivet nuts and crimp into place using rivet nut tool.

5. Once all the rivet nuts are in place along the side, using anti-seize bolt up the rear and center brackets, finger tight first, then tighten with a wrench/socket. Final torque will be applied once all three brackets (per side) are fully attached.



Passenger side rear & center bracket locations



Center bracket: two bolts along side of frame, one underneath



Rear bracket: four bolts along side of frame, one underneath

Passenger front frame bracket install



6. Install rivet nuts in the three locations marked in blue above. Install the front bracket, making sure it fits very tightly against the frame. You will need to drill two holes under the frame to support the front bracket. It will be critical to drill the holes you just marked perfectly for correct fitment.

7. Remove bracket and drill the underside of the frame to 7/16" and install rivet nuts. Re-install front bracket using five supplied M8 bolts and thick washers.

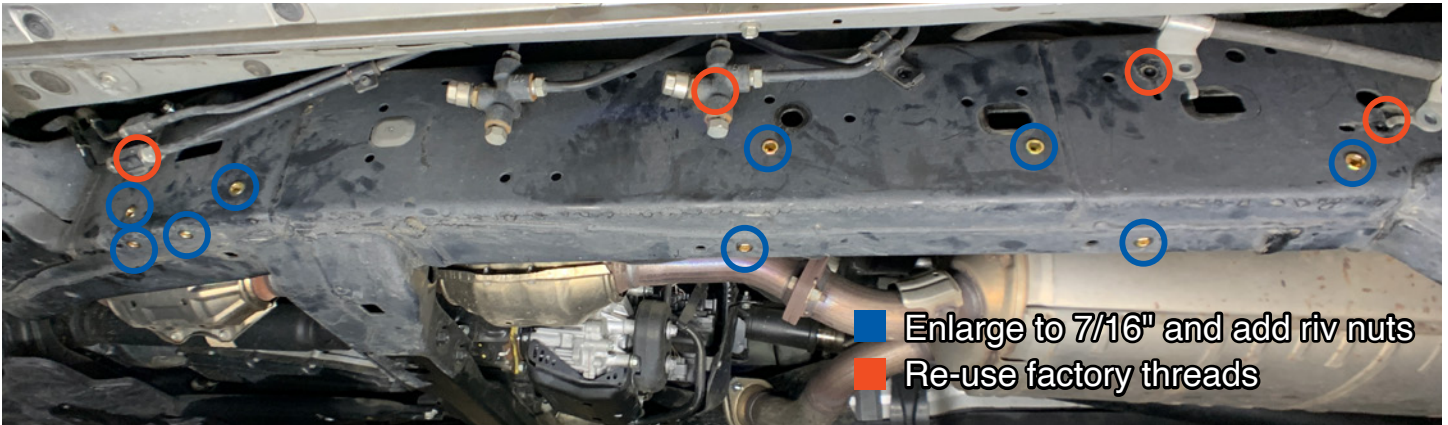


8. Assemble the clamp (using anti-seize) on the 5/16" Grade 8 bolt. First put a washer on the bolt THEN add a washer plate and finally thread on the backing nut plate just enough so it doesn't fall off when inserted into the frame. Insert the clamp



through the rectangular hole in the front bracket and frame. The nut plate will sit inside the frame, and the washer plate will be on the outside of the frame bracket. Make sure both the nut plate and washer plate are oriented vertically then tighten the bolt.





Drivers side brackets

The driver side install is largely similar to the passenger side, you just need to work around the KDSS lines and there are some differences where rivet nuts are required.

9. Install the driver's side rear bracket in the same manner as the passenger side, except you will need to add a rivet nut to the underside of the frame (where the factory fuel tank skid bolts on the other side).

9. Drivers side center bracket will reuse a threaded hole where a KDSS line is mounted, remount the KDSS lines over the center bracket using a newly supplied M8 bolts and thick washer. You will also need to add an under-frame rivet nut like you did on the rear bracket.

10. Front bracket also needs to work around a KDSS mounting point. Loosen (**DO NOT REMOVE**) the bolt that holds the KDSS lines where the front bracket goes. The drivers side front bracket is slotted so you can slide the bracket under the KDSS mounting point without fully removing the bolt. This bolt is very hard to get back in, so loosen it just enough to get the bracket in.



Finalizing the bracket installation

11. There should be 13 bolts used to attach all three frame brackets (per side) plus the clamp w/ the washer/nut plate. Torque all bolts in factory threads to 30ft/lb, and to 25ft/lb for every bolt. (You may not be able to get a torque wrench on all bolts).

Step slider installation

If the tread plates are not pre-installed do so using the 1/4" button head bolts w/ washers.

12. Using a floor jack (or a friend) lift the sliders lining them up perfectly with the brackets. The front and rear brackets get a single bolt from the bottom, install these two bolts first, this will keep the slider attached.

13. Starting at the rear of the slider use a floor jack with a piece of wood to raise the slider so it's 5/8" away from the body (pictured). Once it looks good and level, thread in the four side bolts into the rear bracket getting everything finger tight first then carefully tighten them using a wrench/socket. Thread the center bracket bolts that you can (at least the rearward two). Once it's tightened down, lower the jack (slider may shift).

14. Move the jack with the piece of wood to the front of the slider and repeat the same alignment

process (5/8" away from the body). Once the front and rear brackets are done tighten all four bolts on the center bracket.

15. Torque all the 1/2" bolts to 90ft/lb.



Enjoy your Dissent Off-road step sliders!

