



Dissent LC200 Full Replacement Front Bumper Install Instructions

Thank you for choosing a Dissent Off-road front bumper for your Land Cruiser 200 series. If you have any questions about the install or require any assistance, please give us a call at (530) 512-1108 or via the contact form on our website www.dissentoffroad.com.

Parts List

- | | |
|--|---|
| 04 - M12-1.25 x 45mm Bolt | 04 - 3/8"-16 x 1-1/4" Bolt SS |
| 06 - 1/2" x 1-1/2" bolts | 04- 1/4" SS small washer |
| 16 - 1/2" small washers | 44 - 3/8" SS thick washer |
| 06 - 1/2" Nuts Grade 8 | 06 - 3/8"-16 x 1-1/2" Bolt SS |
| 02 - Rubber grommets | 08 - 7/16" small OD washer |
| 12 - 1/4"-20 x 1/2"
button head (black) | 04 - 3/8"-16 x 1-1/4"
Socket Head SS |
| 02 - 1/4"-20 x 3/4" button head SS | 22 - 3/8"-16 nut SS |
| 08 - 3/8"-16 x 1" Bolt SS | 02 - 1/4"-20 nylock nut |

Tools Required

- Sockets/wrenches:
3/4", 9/16", 7/16"
- Hex: 4mm & 5/16"
- Drill w/ 3/8" drill bit
- Torque wrench
- Anti-seize compound

Component Guide

All the components that come with your Dissent 2016+ Land Cruiser Full Replacement Modular Front Bumper. Light plates may look different depending on what options you choose for your bumper.



Installation Instructions

Removal of factory bumper

1. Open the hood and remove the plastic trim piece above the front grill (7 clips)
2. Carefully pry the chrome trim from the headlights



3. Unplug the two wiring harnesses that connect to the back of the grill

4. Remove the three bolts that hold the top of the front grill, then, push the top of the grill forward. Once the top is loose, you'll need to move the lower grill tabs upward to release them. Carefully work the tabs along the bottom until the entire grill comes free.



5. With the grill removed you'll see three body clips on top of the bumper. Remove the clips and set them aside, they'll be needed later.

6. Unplug the primary wiring harness that feeds

the front bumper (below the front grill area, drivers side). There is a white cover that pivots up to provide access to undo the clip that holds the harness in place.



7. Near the harness is the main headlight washer water line that you will need to unplug. Some fluid will spill. In order to not lose all your windshield washer fluid elevate and zip tie the headlight washer water line out of the way (or plug/pinch it off)
8. Remove the three (per side) T30 screws that hold the front bumper to the wheel well liner
9. Moving underneath the car, remove the plastic trim pieces that surround the factory tow hooks. Five 10mm bolts and one plastic 12mm bolt (per side)



10. Start to pry the front bumper off where it meets the fender. Carefully loosen the bumper and work the entire bumper off the vehicle.

- 11.** Carefully pry up the headlight washers, pull the washer covers up and release the clip that holds the cover to the washers themselves. The washers will retract back into place.



- 12.** Unplug the factory parking sensors and fog lights. Carefully push the parking sensors out of the bumper (marking driver and passenger side) and set them aside.



- 13.** Remove the headlight washers themselves from the inside of the bumper. First remove the metal retaining clip, this allows the gray body to slide back. Then, from the front of the bumper, squeeze the tabs that hold the washers to the bumper and they should come free.

- 14.** We'll be reusing the headlight washers and the fog light wiring harness, so free the washer water lines and wiring harness from the factory bumper and set them aside.



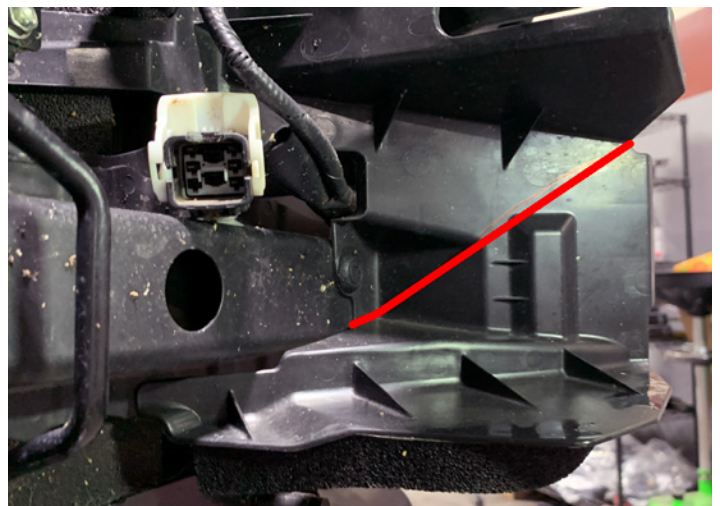
- 15.** At the corners of the vehicle under the headlights you will see two wiring harnesses (per side). Zip tie the wiring looms out of the way so they don't rub against the new bumper.

- 16.** Remove the factory tow hooks

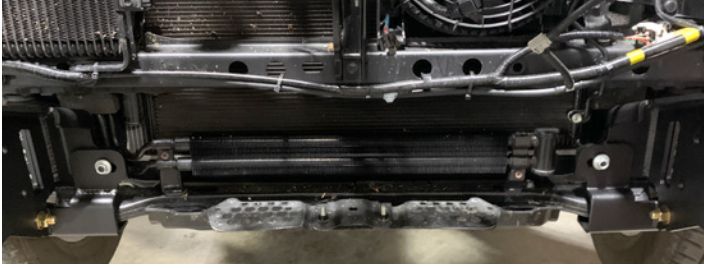
- 17.** Remove the crash bar and crash bar brackets, saving the factory flange nuts.

- 18.** Remove transmission cooler shroud but put the clips and bolts back

- 19.** Cut the off the lower half of the shroud on drivers side as pictured (along the red line)



Dissent Bumper Installation



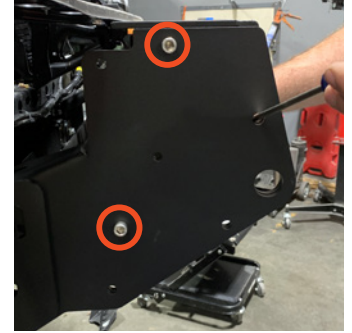
20. Plug the electrical harness and headlight washer lines back in and route them behind the shroud you trimmed then along the metal transmission cooler support using zip ties.
21. Sandwich the frame brackets together as pictured and install on frame using new washers 7/16" along with the OEM flange nuts. You want the flange nuts just under finger tight to hold the brackets in place but still have a tiny bit of play for final adjustment



22. Bolt the two frame brackets (per side) together using a single 1/2" x 1-1/2" bolts through lower hole (pictured)
23. Use antiseize on the four supplied M12 bolts, they go underneath the frame brackets where the factory tow hooks were. Make these finger tight with enough play so you can still move the bumper from side to side (when hit with a rubber mallet). Careful to not make the bolts too loose.

24. Install your winch into the center section (if applicable), then raise the center section in between the frame brackets and carefully align all the holes on the recovery point sections.

25. The center section bolts to the brackets using four socket head cap screws, the socket heads face outward towards the wings and the threads point into the center (these can be accessed for adjustment via the bumper wing cutouts). No washer is required on the head but the backing nuts will require washers.



26. Once the washers and nuts are on the socket head cap screws loosely, align all the holes on the recovery points. Use a screwdriver to perfectly match up all the holes between the center section and the frame brackets.
27. Once perfectly aligned, tighten the socket head screw caps to approximately 25ft/lb.
28. Using the last four 1/2" x 1-1/2" bolts (with washers) secure the frame brackets to



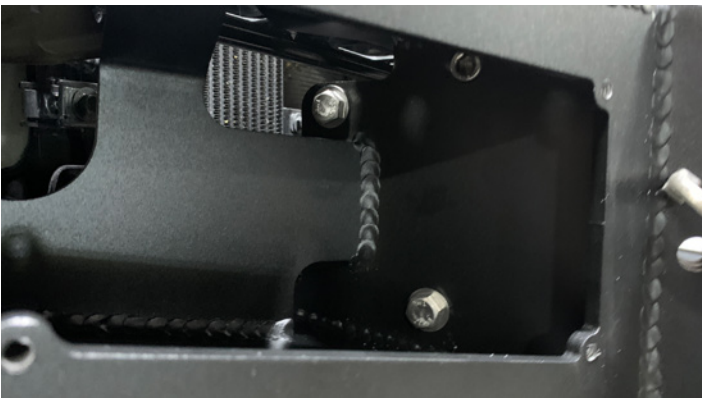
center as pictured. The ½" nuts go on the inside of the center section with washers.

- 29.** Attach the weather stripping to each wing, pull back the weather strip to reveal the headlight notch and using a utility knife, cut the weather



stripping as shown to accommodate the plastic protrusion below the headlights.

- 30.** Insert the parking sensors and rubber grommets into the wings. The parking sensors are easily damaged, so take your time and it may require soapy water to press the grommet and sensor through.
- 31.** Attach the bumper wings by lining up the holes with the center section, you can use a clamp to temporarily hold the wing to the



center while you thread two 3/8" x 1-¼ bolts w/ washers through and backed by a washer and 3/8" nut. Torque to 25-30lb/ft.

- 32.** Reinstall headlight washers. You may choose to paint or apply a film to color match your headlight washer covers to your bumper color.



- 33.** Triple check that the recovery holes and bolt holes in that area are all perfectly aligned between the three pieces (frame bracket, center, wing). Then put the



recovery point cap on, thread the bolts (with washers on both sides) from the outside in making it finger tight to start.

- 34.** Secure the top plates to the bumper (If you ordered the bull bar it goes in place of the top plates) using four 3/8"-16 x 1" stainless bolts. The top plates have a center protrusion that extends to the recovery point cover. The protrusion is flat on the bottom and contoured on top to match the curvature of the recovery point covers (pictured)
- 35.** For the final bumper alignment make sure the flange nuts are tight enough so the bumper is



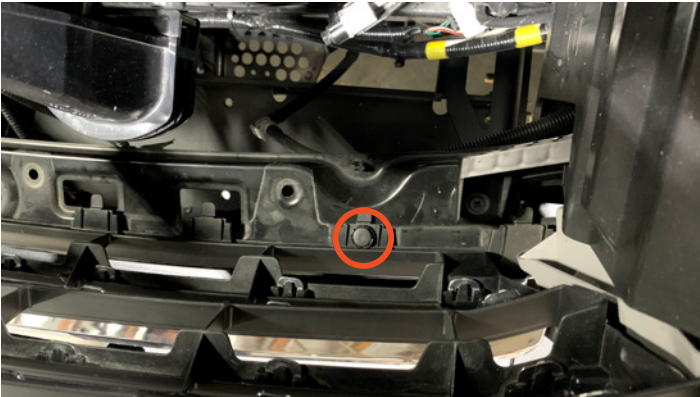
tight against the frame but loose enough so it can slide upward in the next step.

- 36.** Using a floor jack with a piece of lumber start to raise the bumper from the center to close the gap between the headlights and the bumper. Make sure the frame brackets are not binding as you shift the bumper upwards. This step may take some trial and error, getting the frame bracket flange nuts loose enough so the entire bumper can shift up, but not so loose that the bumper angles downward.
- 37.** Once the headlight gap is tight against the weather stripping on the wings, tighten down the flange nuts.
- 38.** Additional adjustment if needed: In rare cases, the headlight gap may look correct in front, but not from the side where it meets the fender. In that case you can rotate the wings to get the gap uniform. To rotate the wings, loosen the recovery point covers and the two 3/8" bolts that hold the wing to the center (do not loosen the socket head screw caps). Then rotate the wing from the side to get the end tucked up towards the headlight.
- 39.** Once everything looks correct, torque the flange nuts on the frame to 40ft/lbs.
- 40.** Torque the three 1/2" bolts (per side) that

hold the frame brackets to the center to 90ft/lbs along with the four M12 bolts that support the frame bracket from underneath.

- 41.** Reinstalling the factory grill. The bottom of the factory grill clipped into the top of the bumper cover so we need to fashion a new way to secure the bottom of the grill using the three clips we removed in step 5. Place the grill where it should go





ensuring it is pushed in securely. We will need to drill three of the tabs in the bottom of the grill (three tabs pictured). Keep in mind when marking the tabs you will drill the metal support below the grill as well. Choose a drill location that is central on the tab but also in a place that can be drilled in the metal support below. Mark the grill first and drill to 3/8" (verify size with the clips you removed in step 5), replace the grill securely then mark the metal grill support for drilling. Remove the grill and drill the metal support. Place 3/8" washers over the three newly drilled holes and place grill on top of the washers and secure the grill to the support using the three clips from step 5. Lastly,



replace the three top screws that held the grill in place up top

42. Next you'll need to trim your fender liners to match the contour of the bumper. Along the outer edge of the fender, leave an extra long strip of wheel well liner (pictured: cut the strip to the next available fender screw hole) bend that strip up into the bumper then use a heat gun to mold the wheel well liners to naturally bend into their new location. You can optionally drill the bumper and put a button head bolt and nut securing the wheel well liner flap to the bumper if desired.

43. Wire your lights (if any) and install them into the faceplates. For rigid lights, you can cut off the factory fog light connector and solder/



crimp supplied rigid light connectors

44. Install faceplates and the Dissent Off-road badge with the button head 1/4"-20 bolts

Enjoy your Dissent Off-road modular front bumper!