



Fabric Eggs

Materials needed:

- Medium weight cotton, cotton/linen blend or linen (and matching thread)
- Light weight or Medium weight fusible interfacing
- Straight pins
- Embroidery floss and a needle
- A pencil

By Mani Mina Studio - New York

BEFORE WE START...



- To print your pattern, please set the printer scale at 100%.



- Check the test square on your patterns page to make sure the test measure exactly 1" by 1".



- The seam allowance (1/4" - 0.6cm)) is included in all the pattern pieces.



- Make sure to always press your seams! It will make your seams neater and easier to work with. Keep an iron next to your sewing machine so you can use it easily!



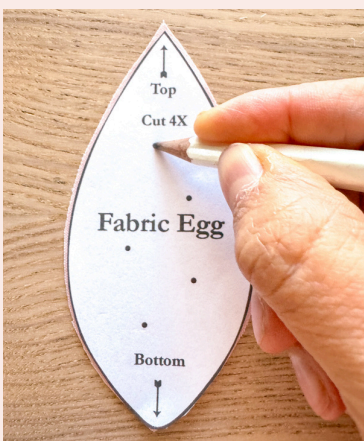
- **Interfacing fusible**

Interfacing is optional but strongly recommended: it adds stability, structure and shape to your project.

If you want to add embroidery to your egg:



Place the pattern piece on top of one egg fabric piece.



Press a pencil through the paper to mark each point onto the fabric. Each point is where you will start embroidering the little bows.

Skip page 3 and go to page 4 if you don't want to embroider the egg piece.

Embroidering bows on the egg



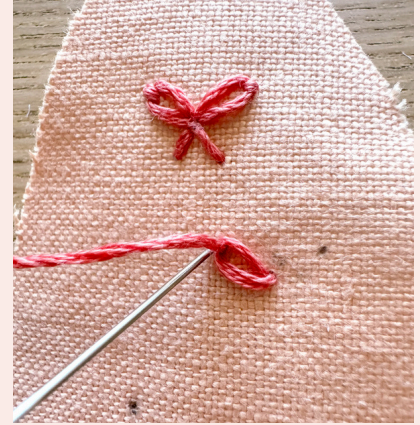
We are going to use the Lazy daisy stitch technique to make the bows loops.



Bring the needle up through the fabric to the front. Make 2 marks (point 2 and point 3) in the diagonal, 1/4" - 0.6cm away from the starting point.



Hold the thread with your left hand, form a loop and bring the needle out at the first mark (point 2) on the left, through the loop.



Fasten the loop by sewing a small stitch over the loop at point 2 as shown.



Repeat the same steps to create 2 loops (the second loop is done on the point 3).



Bring the needle up through the 2 bows middle point.



Embroider one stitch on the left.



Embroider a last stitch on the right. Repeat the same process on all the remaining points on the egg piece.

Stitching the egg



Cut out:

- 4 fabric egg shapes



Optional: if your fabric is lightweight, interfacing is recommended to give thickness and stability to your fabric.



Place 2 egg pieces right sides together and stitch one side with 1/4" - 0.6cm seam allowance as shown. Repeat the same process with the remaining 2 egg pieces.

TIP: The egg pieces have a pointy top and rounder bottom. Make sure to align them correctly.



Clip the round edges with a zigzag scissors or regular scissors making small cuts all long the seam. You now have 2 egg halves.



Place the 2 egg halves right sides together.



Make sure the top and bottom seams are matching. Pin and stitch as shown, leaving a 1.5" (3.8cm) opening as shown.



Stuff the egg slowly, making sure it is stuffed equally on all sides.

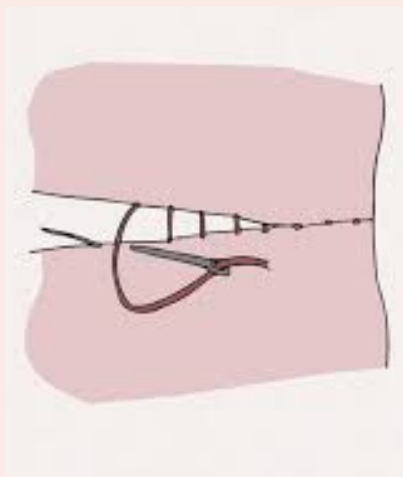


You can use a stick or chopstick to push the stuffing inside.



Fold the opening edges toward in and stitch it up using the ladder stitch technique (see below).

How to ladder stitch



Poke needle through the edge of the seam. Sew from the right to the left side of the opening. Make even, small stitches (around 1/4" wide) that are on the edge of the seam and parallel to each other.



Gently pull the thread to close the opening. Make a knot inside the seam and poke the needle out a little further away from the stitches. It looks neat and invisible. Your egg is done!



Check all our dolls PDF patterns in my etsy shop!

<https://www.etsy.com/shop/manimina/>



If you post about the egg bed you made from my pattern, please credit me as the designer of the pattern (pattern by: @manimina_studio).

Thank you!



TERMS OF USE

This pattern is for personal use only. Please do not sell or redistribute this pattern in printed form or electronically. I thank you for respecting my work!

Yours, truly Emilie
Mani Mina Studio - New York