

Satin.Ice

ChocoPan[®]

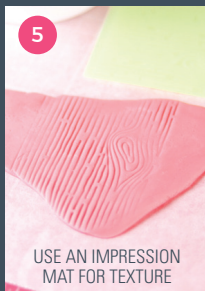
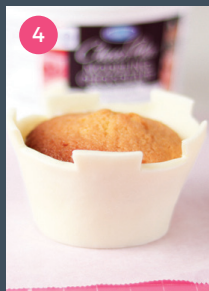
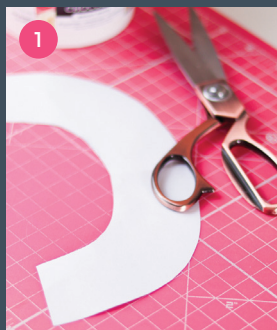
CHOCOLATE FONDANT

get the
how-to
→

STEP BY STEP TUTORIAL

Castle Cupcake Wrapper





SUGGESTED TOOLS:

- Paper cupcake wrap
- White Chocolate Fondant
- Pink Chocolate Fondant
- Edible glue
- Food safe paint brush

- Small edible sugar pearls
- Toothpick
- Buttercream
- Wood grain impression mat
- Circle cutter
- Small sharp knife

Satin.Ice
ChocoPan.

for more product
information visit

satinice.com