



AIR HEATERS & LIQUID HEATERS

WWW.AUTOTERM-USA.COM



User Manual

AUTOTERM Control Panel **PU-28**



AIR HEATERS & LIQUID HEATERS
WWW.AUTOTERM-USA.COM

Autoterm PU-28 Overview

The Autoterm PU-28 is an easy to use touch screen control panel, which allows pin point temperature setting accuracy. The PU-28 can be used with any of Autoterm's various Air heater models, both diesel and gas. Look for Bluetooth capabilities for use with you digital Android and IOS phones in the near future.

The control panel is compatible with the following Airheaters:

- Autoterm 2D -Diesel
- Autoterm 4D -Diesel
- Autoterm 4B -Gas
- Autoterm 8D -Diesel
- Autoterm 9D -Diesel

Contact Autoterm USA for info

503-766-9232

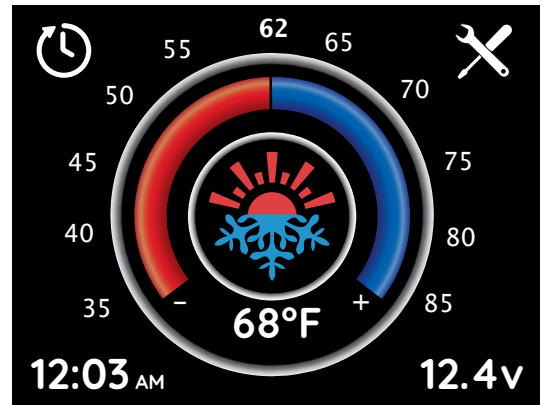
info@autoterm-usa.com

680 South 28th Street Suite C
Washougal, WA 98671

Contents

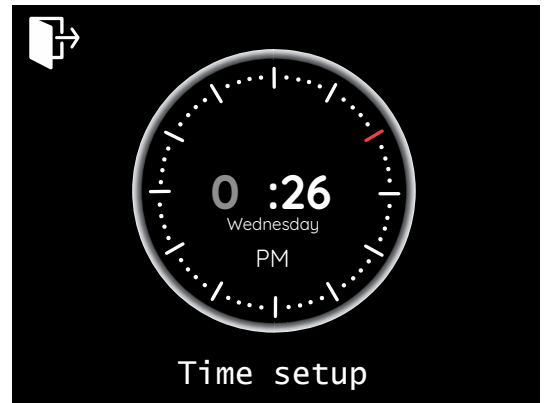
- 1 Autoterm PU-28 Overview
- 2 Setting the Temperature
- 2 Setting the Time
- 3 Setting Timers
- 4 Settings
- 4 Heater Temperature Settings
- 5 Work Time
- 5 System Settings
- 6 System Info
- 6 Display

Setting the Temperature



Set the temperature by touching the temperature dial and rotating it to the preferred setting or by touching the plus or minus buttons below the dial. To finalize, touch the logo inside the dial.

Setting the Time 12:03 AM

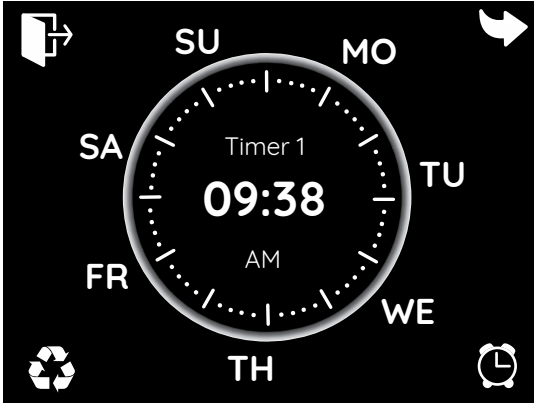


Navigate to the **Time setup** screen by double tapping the time stamp in the lower left corner of the main screen.

Once on the **Time setup** screen, touch the inside of the dial to choose between day, hour, and minute setting. Then rotate the dial clockwise until you reach the preferred time.

Touch the door icon in the upper left corner to return to the main screen.

Setting Timers



Setting timers allows you to set a timer for the heat unit to come on in the future.

Navigate to the **Setting timers** screen by tapping the clock icon in the upper left corner of the main screen.

Once on the **Setting timers** screen, set a timer by touching the inside of the dial and rotating the dial clockwise to the preferred time set. To finalize, touch the alarm icon in the lower right corner.

Touch the arrow in upper right corner to choose between timers 1, 2, or 3.

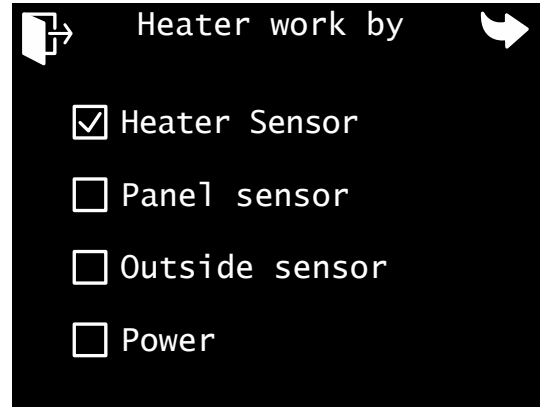
To switch or between timer sets during heater operations or to reset timers after use, touch the rotate icon in the lower left corner.

Touch the door icon in the upper left corner to return to the main screen.

Settings

Access settings by touching the tool icon in the upper right corner of the main screen. This allows you to cycle through the **Heater Temperature Settings**, **Work time**, **System**, **System info**, and **Display** screens.

Heater Temperature Settings



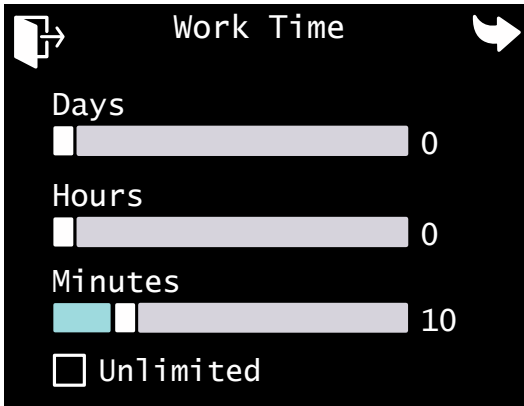
Screen one in settings allows you to choose which sensors you prefer the heater to work by. The system has three possible sensors:

1. Heater sensor— The internal sensor inside the heat unit
2. Panel sensor— The sensor on the control panel
3. Outside sensor— The optional exterior sensor mounted in the cab unit

Alternatively, the system can be set to power mode which allows you to run the system on a 1-10 power level.

Touch the arrow in the upper right corner to access screen two.

Work Time

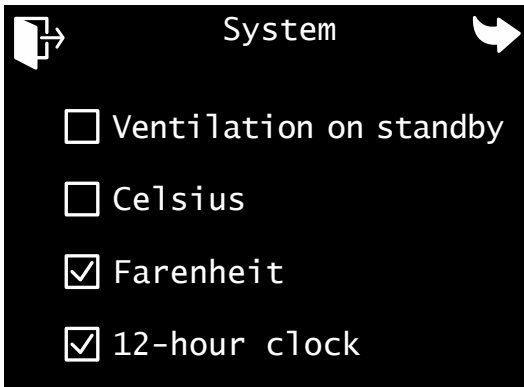


Screen two allows you to set your unit to run between 10 minutes and 7 days 23 hours and 55 minutes.

The system can also be set to run constant by touching the square marked unlimited.

Touch the arrow in the upper right corner to access screen three.

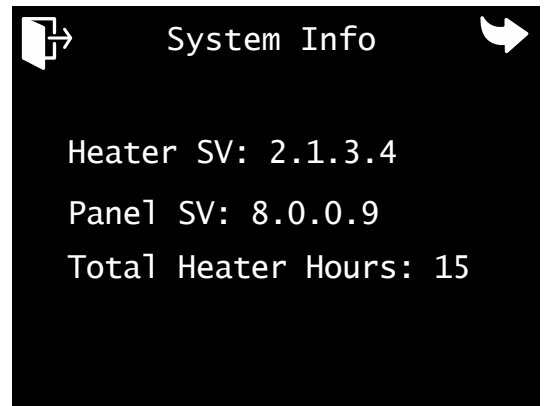
System Settings



Screen three allows you to change system settings such as enabling ventilation on standby, choosing the temperature preference between Celsius and Fahrenheit, and choosing between a 12 and 24 hour clock.

Touch the arrow in the upper right corner to access screen four.

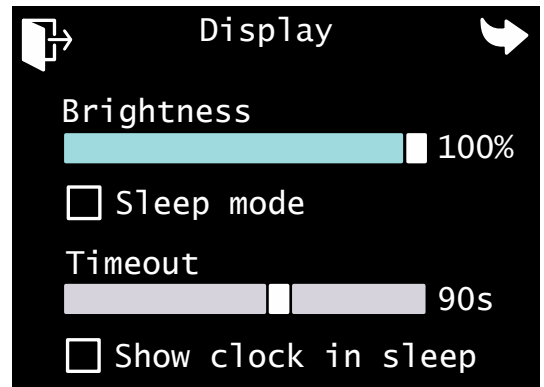
System Info



Screen four gives the software versions for both the heater and the control panel and the total hours that the heater unit has been running.

Touch the arrow in the upper right corner to access screen five.

Display



Screen five allows you to adjust the brightness of the panel and whether the panel goes into sleep mode.

Allows you to choose how long the panel displays information before it goes into sleep mode and gives you the option to have the clock displayed during sleep mode.

Return to main screen by touching the door icon in upper left corner.



AIR HEATERS & LIQUID HEATERS

WWW.AUTOTERM-USA.COM



Autoterm North America

503-766-9232 | info@autoterm-usa.com

680 South 28th Street Suite C Washougal, WA 98671