

*\* Your shades will come with metal clips for the plastic trim of the window.*

1.

Depending on your build, you may have a full plastic trim around the back windows or a half plastic trim as shown only covering the bottom.

The metal clips included will allow the magnet in the border of the shade to attach to the plastic trim at the bottom of the frame. This graphic shows approximately where the magnet in your shade should line up on a half plastic trim.

The clip should easily slide onto the inner edge of the plastic trim with the flat, broad side facing up.

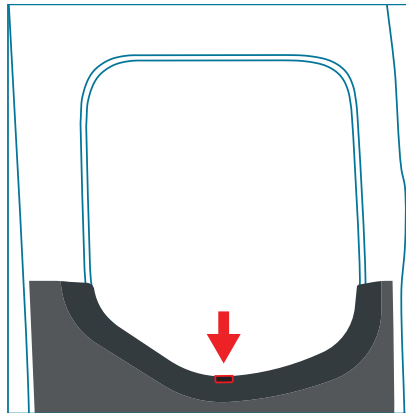
**! Tip: You can feel the magnets in the border and mark where the clips should line up with masking tape as you test fit. !**

#### EXPOSED METAL

is easily mounted to by the magnetic border of the top half of the shade.

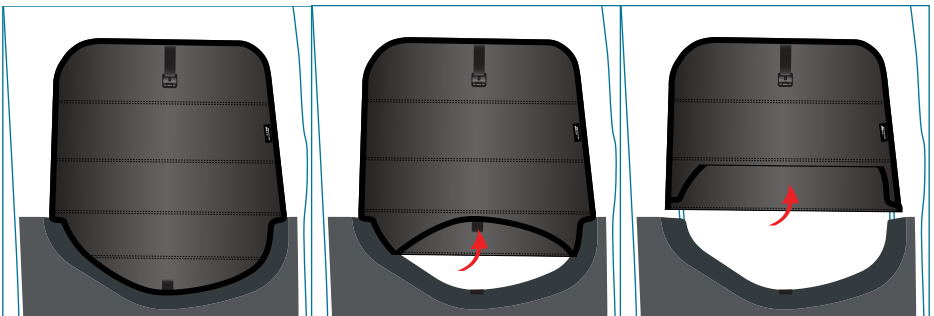
#### METAL CLIPS

for magnets in shade border to attach.



2.

Now you should be able to easily mount and unmount your shades. It can be folded up as shown or down from the top for partial shade.



YOU DID IT!