

SPINNAKER
HULL
CHRONOGRAPH

**MECA-QUARTZ
CHRONOGRAPH**

This timepiece is powered by a Japanese made "Meca-Quartz" movement. It combines a battery regulated engine with a mechanical chronograph module. The result is a watch which delivers the meticulous pinpoint precision of a quartz movement along with the crisp, flyback handfeel and visual charm of mechanical watches.

For more details on operating this timepiece please refer to the enclosed booklet or visit:

spinnaker-watches.com

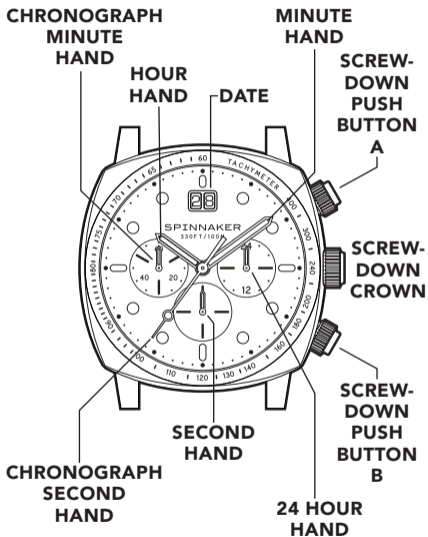
SPINNAKER
HULL
CHRONOGRAPH

Instruction Manual



For more information
Pour plus d'informations
Para más información
Per maggiori informazioni
Für mehr Informationen
想要查询更多资讯
詳細については

Vol. 1.68 EN

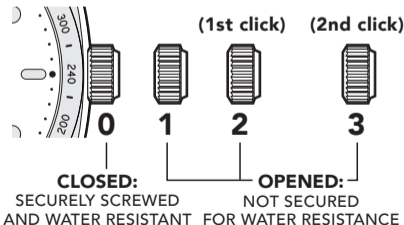


PLEASE READ THE FOLLOWING BEFORE UNSCREWING THE CROWN

Screw-down Crown

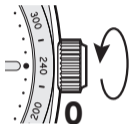
Screw-down crowns are used to ensure water resistance. **ALWAYS** be certain that your crown is securely screwed down (Position [0] is secured. Positions [1],[2] and [3] are not secured for water resistance).

Do **NOT** unscrew your crown while you are in any environment where moisture is present.

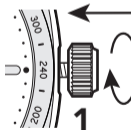


USING THE SCREW-DOWN CROWN

Do **NOT** pull the crown unless it is **UNSCREWED** first:



TO UNSCREW: Turn the crown anti-clockwise until it turns freely without tension. **GENTLY** pull the crown out to the other desired positions for watch setting (see specific operating instructions on the following pages).

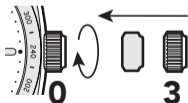
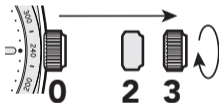
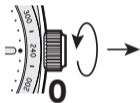


TO SCREW: Push the crown **ALL THE WAY IN** (towards the watch) **THEN** begin to turn clockwise until it is securely screwed down.

NOTE: Failure to **SECURELY** screw down the crown after setting the watch may affect its water resistance.

HOW TO SET THE TIME

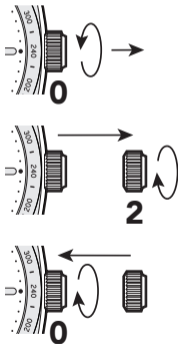
1. Unscrew the crown and pull it out to position **[3]**-(**2nd click**).
2. Turn the crown clockwise to set the correct time.
3. Push the crown in then screw it securely.



- * Take a.m./p.m. into consideration when setting the hour and minute hands to the desired time.
- * When the crown is at the position [3], do not press any button, otherwise the chronograph hands will move.

HOW TO SET THE DATE

1. Unscrew the crown and pull it out to position [2]-(1st click).
2. Turn the crown clockwise to set the correct date.
3. Push the crown in then screw it securely.



- * Do not set the date between 9:00 P.M. and 3:00 A.M., otherwise the day may not change properly. If it is necessary to set the date during the time period, first change the time to any time outside it, set the date and then reset the correct time.

USING THE SCREW-DOWN PUSH BUTTON

This watch is equipped with screw-down push button. The push button will not be able to be pressed until the button are unscrewed.

To **screw-down** the button – turn the washer around the button **clockwise** until you encounter resistance.



SCREW-DOWN



UNSCREW

To **unscrew** the button – turn the washer around the button **anti-clockwise** until it is at its maximum height away from the case.

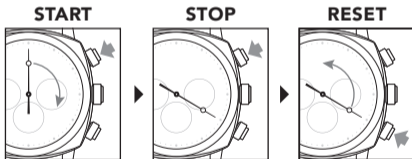
You will only be able to operate the functions of the chronograph when the buttons are unscrewed.

- The watch is only water resistant as marked to its specified depth if the button has been screwed down
- Buttons must never be unscrewed or be operated underwater.

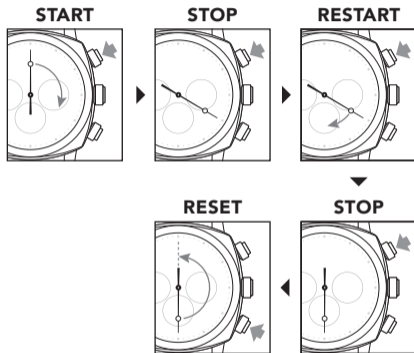
STOPWATCH FUNCTION

- This chronograph is able to measure and display time in 1/5 second united up to maximum of 59min 59sec.

STANDARD MEASUREMENT



ACCUMULATED ELAPSED TIME MEASUREMENT



* Restart and stop of the stopwatch can be repeated by pressing the button A.

STOPWATCH HANDS POSITION ADJUSTMENT

If the stopwatch hands are not in the [0] position (12 o' clock position), follow the procedure below to set them to the [0] position.

If the stopwatch is in use, press the buttons in the following order to reset, and then, check if the hands return to [0] position.

- If the stopwatch is counting: A -> B
- If the stopwatch is stopped: B

If either of the stopwatch hands are not in the [0] position, reset them following the procedure below.

1. Pull the crown to position [3]-(2nd click).
2. Press button B for two seconds and release the button to reset all stopwatch hands to [0] position.

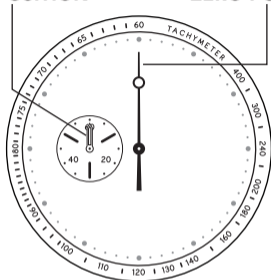
* The stopwatch minute hand moves correspondingly with the stopwatch second hand.

Tips: The hands move quickly if the respective buttons are kept pressed.

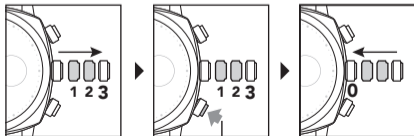
3. Push the crown in.

**STOPWATCH
MINUTE HAND
ZERO POSITION**

**STOPWATCH
SECOND HAND
ZERO POSITION**



**RESET STOPWATCH SECOND HAND
& MINUTE HAND TO ZERO**



**Hold
2 Sec.**

USING THE TACHYMETER

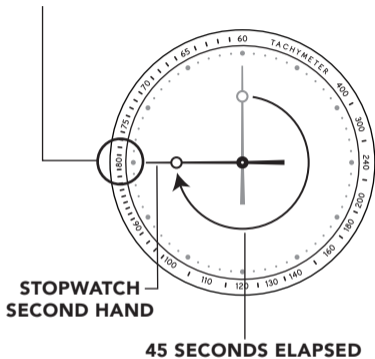
The most common use of a tachymeter is for measuring the approximate speed of a vehicle over a known distance.

(E.g.) Based on how many seconds it takes a vehicle to travel 1 km or 1 mile (the available measuring range is up to 60 seconds), the average speed within the distance can be calculated.

1. Start the chronograph when the vehicles commence travel.
2. After the vehicle has travelled 1 km/1 mile, stop the chronograph.

The approximate average speed within the distance can be determined by observing the present position of the stopwatch second hand and reading the outer bezel.

STOPWATCH SECOND HAND POINTS TO 9 O'CLOCK, THEREFORE THE TACHYMETER SCALE SHOULD BE READ AT 9 O'CLOCK. THE AVERAGE SPEED IS 80 KPH.



Note: The tachymeter indications may appear on dial ring, rather than on the outer bezel (depending on model).

As shown in the illustration, it takes the vehicle 45 seconds to travel 1 km so the approximate average speed is 80 kph (50 mph).

WATER RESISTANCE


Note that the water resistance chart serves only as a guide (please refer to the water resistance chart on the next page). Actual water resistance may vary depending on a number of factors including water temperature, water salinity and use under water.

The water resistance of your timepiece may eventually be compromised over time with general wear and tear and use of your timepiece under adverse conditions.

Always remember to employ the screw down crown if available to maintain the water resistance of your timepiece. Warranty may be voided if the screw down crown has not been properly employed.

Note that you should NEVER wear your watch in a jacuzzi, hot shower or steam room where steam may enter the case despite the watertight seals used to protect your watch.

This may cause condensation inside your watch, which may affect and damage the inner workings of your watch.

WATER RESISTANCE CHART	50M/ 5ATM	150M/ 15ATM	200M/ 20ATM	300M/ 30ATM	500M/ 50ATM
SPLASH/ SHOWERING					
SWIMMING/ BATHING					
BRIEF SWIMMING/ WATER SPORTS					
PROLONGED SWIMMING/ FREE DIVING					
SCUBA DIVING					
PROFESSIONAL DEEP SEA DIVING					

Represented By: (for EU/UK)

Authorised Rep Compliance Ltd.,
Ground Floor, 71 Lower Baggot Street,
Dublin, D02 P593, Ireland.

WARNING

- **INGESTION HAZARD:** This product contains a button cell or coin battery.
- **DEATH** or serious injury can occur if ingested.
- A swallowed button cell or coin battery can cause **Internal Chemical Burns** in as little as **2 hours**.
- **KEEP** new and used batteries **OUT OF REACH** of CHILDREN.
- **Seek immediate medical attention** if a battery is suspected to be swallowed or inserted inside any part of the body.



CE UK
CA