



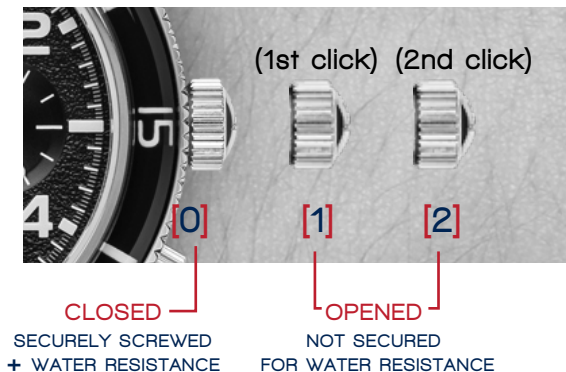
QUARTZ CHRONOGRAPH WITH DATE

FLEUSS COLLECTION SP-5085

PLEASE READ THE FOLLOWING BEFORE UNSCREWING THE CROWN:

SCREW-DOWN CROWN

Screw-down crowns are used to ensure water resistance. **ALWAYS** be certain that your crown is securely screwed down (Position [0] is secured. Positions [1] and [2] are not secured for water resistance). Do **NOT** unscrew your crown while you are in any environment where moisture is present.



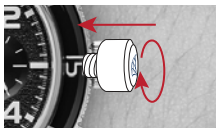
USING THE SCREW-DOWN CROWN

DO **NOT** PULL THE CROWN UNLESS IT IS UNSCREWED FIRST:



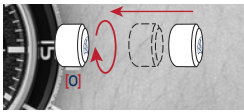
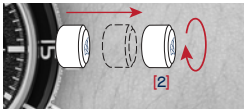
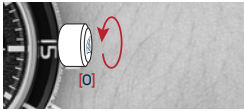
TO UNSCREW: Turn the crown anti-clockwise until it turns freely without tension.

GENTLY pull the crown out to the other desired positions for watch setting (see specific operating instructions on the following pages).



TO SCREW: Push the crown ALL THE WAY IN (towards the watch) THEN begin to turn clockwise until it is securely screwed down.

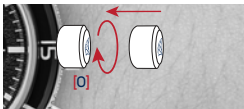
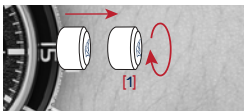
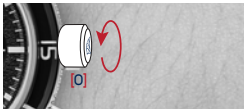
NOTE: Failure to SECURELY screw down the crown after setting the watch may affect its water resistance.



HOW TO SET THE TIME

1. Unscrew the crown and pull it out to position [2].
2. Turn the crown to set the correct time.
3. Push the crown in then screw it securely.

- * Take a.m./p.m. into consideration when setting the hour and minute hands to the desired time.
- * When the crown is at the position 2, do not press any button, otherwise the chronograph hands will move.



HOW TO SET THE DATE

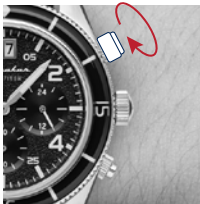
1. Unscrew the crown and pull it out to position [1].
2. Turn the crown clockwise to set the correct date.
3. Push the crown in then screw it securely.

- * Do not set the date between 9:00 P.M. and 1:00 A.M., otherwise the day may not change properly. If it is necessary to set the date during the time period, first change the time to any time outside it, set the date and then reset the correct time.

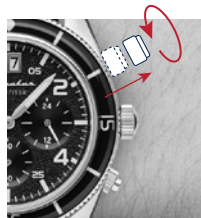
USING THE SCREW-DOWN PUSHERS

This watch is equipped with screw-down pushers. The pushers will not be able to be pressed until the pushers are unscrewed.

To **screw-down** the pusher – turn the washer around the pusher **clockwise** until you encounter resistance.



SCREW-
DOWN



UNSCREW

To **unscrew** the pusher – turn the washer around the pusher **anti-clockwise** until it is at its maximum height away from the case.

You will only be able to operate the functions of the chronograph when the pushers are unscrewed.

- The watch is only water resistant as marked to its specified depth if the pusher has been screwed down
- Pushers must never be unscrewed or be operated underwater.

STOPWATCH FUNCTION

- The measurement time is indicated by the stopwatch hands that move independently of the center hands and 24-hour hand.
- The stopwatch can measure up to 60 minutes.

■ STANDARD MEASUREMENT



■ ACCUMULATED ELAPSED TIME MEASUREMENT



Restart and stop of the stopwatch can be repeated by pressing the button **A**.

WATER RESISTANCE

Note that the water resistance chart serves only as a guide (please refer to the water resistance chart on the next page). Actual water resistance may vary depending on a number of factors including water temperature, water salinity, and use under water.

The water resistance of your timepiece may eventually be compromised over time with general wear and tear and use of your timepiece under adverse conditions.

Always remember to employ the screw down crown if available to maintain the water resistancy of your timepiece. Warranty may be voided if the screw down crown has not been properly employed.

Note that you should never wear your watch in a jacuzzi or steam room where steam may enter the case despite the water tight seals used to protect your watch. This may cause condensation inside your watch which may effect and damage the inner workings of your watch.

***Spinnaker watches, its manufacturer , brand owner or any of its affiliated companies accept no liability for death or injury resulting from use, misuse or failure on the part of this watch.**

WATER RESISTANCE CHART	30M/ 3ATM	50M/ 5ATM	100M/ 10ATM	150M/ 15ATM	200M/ 20ATM	300M/ 30ATM	500M/ 50ATM	1000M/ 100ATM
SPLASH/ SHOWERING	☑	☑	☑	☑	☑	☑	☑	☑
SWIMMING/ BATHING	☒	☑	☑	☑	☑	☑	☑	☑
SWIMMING/ SNORKELING/ WATER SPORTS	☒	☒	☑	☑	☑	☑	☑	☑
FREE DIVING	☒	☒	☒	☑	☑	☑	☑	☑
SCUBA DIVING	☒	☒	☒	☒	☒	☑	☑	☑
PROFESSIONAL DEEP SEA DIVING	☒	☒	☒	☒	☒	☒	☑	☑

WATER RESISTANCE: 15ATM

-
- Battery lifetime is 3-5 years, but it depends from use. To be substitute only from qualified operators and do not burn it. Keep bulk batteries faraway from children.