

HOUR
HAND

MINUTE
HAND

CROWN

1

2

3

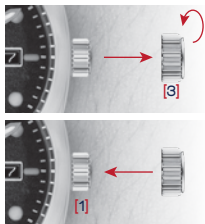
DATE

AUTOMATIC 3 HANDS WITH DATE

HULL COLLECTION SP-5059

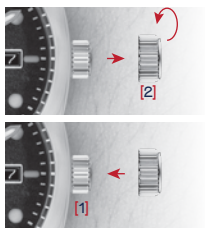


HOW TO SET THE TIME



1. To unscrew the crown, turn the crown anti-clockwise until it turns freely without tension.
2. Pull out the crown to position [3].
3. Turn the crown to set the correct time.
4. Set to the correct time.
5. Push the crown back into position [1].
6. To screw the crown, push the crown all the way in (towards the watch) then begin to turn clockwise until it is securely screwed down.

HOW TO SET THE DATE



1. To unscrew the crown, turn the crown anti-clockwise until it turns freely without tension.
2. Pull out the crown to position [2].
3. Turn the crown anti-clockwise to set the date.
4. Set the correct time.
5. Push the crown back into position [1].
6. To screw the crown, push the crown all the way in (towards the watch) then begin to turn clockwise until it is securely screwed down.

NOTE:

- Do not set the date between 9:00 P.M. and 4:00 A.M.
- This watch **MUST** be worn for at least 8 (Eight) hours each day to ensure it is fully wound. An automatic watch will only wind when the watch is on your wrist and your arm moves. Winding the watch by the crown will put power on the spring but not enough to allow the watch to function fully. If your watch stops overnight or loses time it means it is not being fully wound.
- Failure to **SECURELY** screw down the crown after setting the watch may affect its water resistance.