

eurdKonzept

INSTRUCTIONS

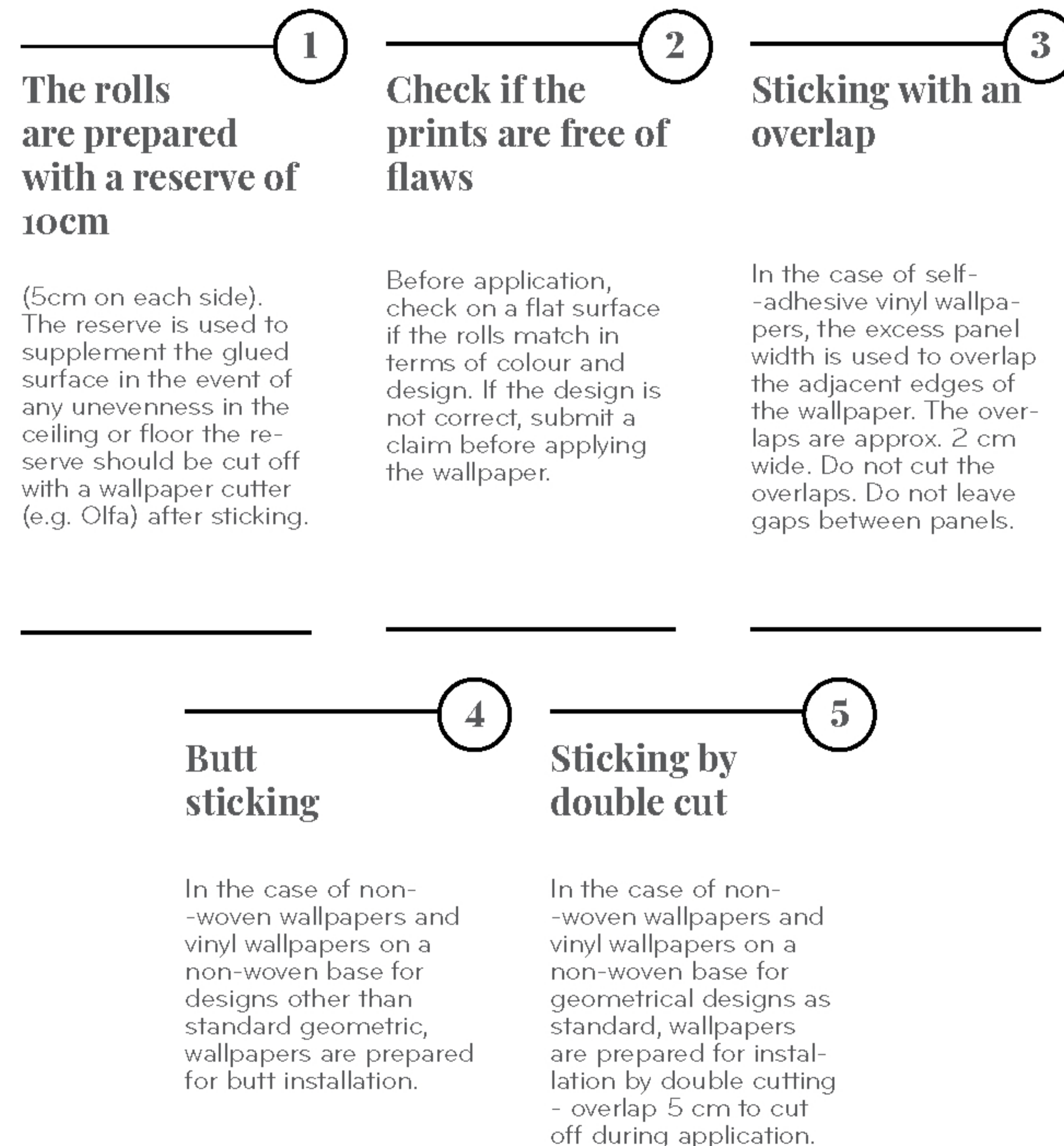
WALL PREPARATION
AND WALLPAPER HANGING

BEFORE HANGING THE WALLPAPER
PLEASE READ THE APPLICATION
INSTRUCTIONS CAREFULLY.

TABLE OF CONTENTS

What you should know before sticking	3
Wall preparation - dry zone	4
Wall preparation - wet zone	6
Hanging wallpaper with adhesive - butt joint method	8
Hanging wallpaper with adhesive - double cut method	10
Hanging self-adhesive laminated wallpaper	12
Hanging on tiles, furniture, lacobel or glass	14

WHAT YOU SHOULD KNOW BEFORE STARTING:



WALL PREPARATION - DRY ZONE

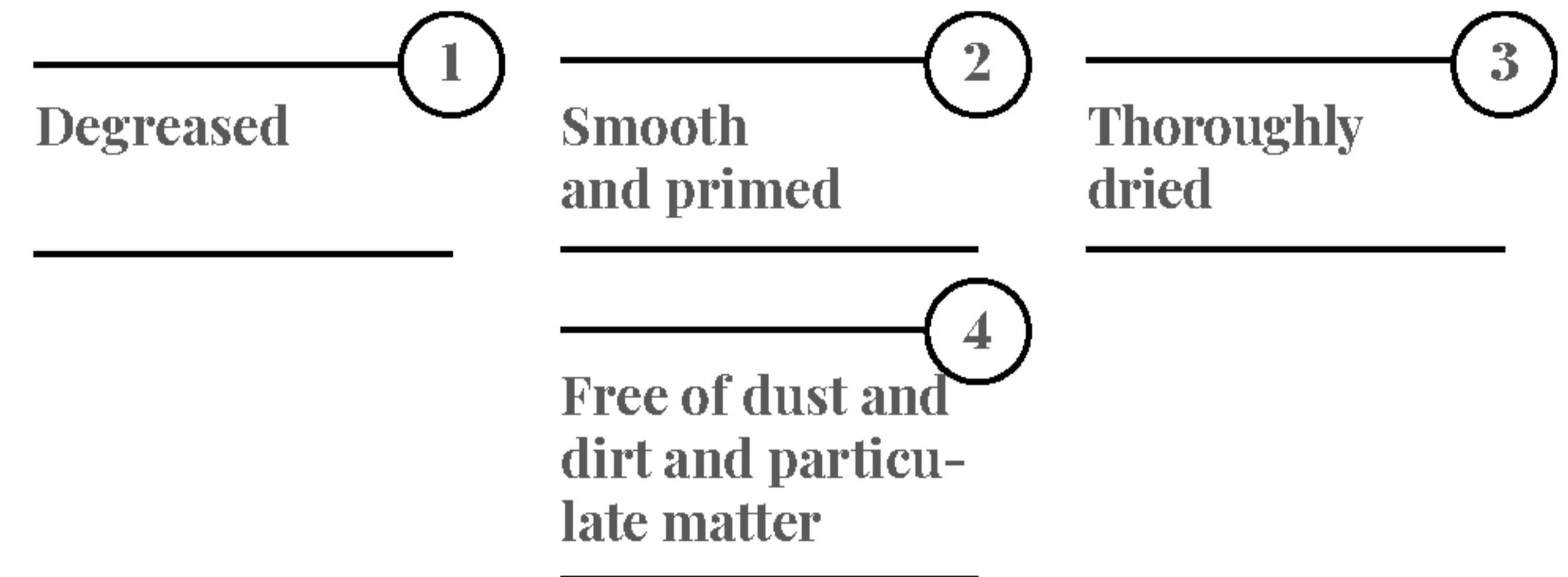
Surfaces such as:
parget, concrete, plaster

1. Wallpapering should take place at the very end of renovation.
2. Before starting wallpapering, the room should be cleaned after renovation.
3. During application and 24 hours after application, do not ventilate the room, use air conditioning, or cause drafts or sudden temperature changes.
4. The wall to be papered should be:
 - Perfectly smooth - the wallpaper will not hide the unevenness of the wall - it will even emphasize it.
 - Of a uniform bright colour. The painted wall should be primed - we do not paint with primers. We do not add primer to the paint.
 - Primed twice with deeply penetrating primer, e.g. Ceresit CT17
5. Adjacent walls should be painted before wallpapering! The colour of the adjoining walls should go (a few mm) onto the wall to be papered.
6. Skirting boards, window frames, frames and other wooden, stone and metal elements should be acrylated and thoroughly washed. Acrylation of the surface after applying the wallpaper may damage it!
7. Light switches and sockets should be installed without frames, and the holes for light fittings and pictures should be drilled.
8. Radiators should be removed and the furniture should be moved at least 1 meter away from the wall to be wallpapered
9. Priming:
 - Prime thoroughly and generously with deeply penetrating primer
 - After 24 hours prime a second time.
 - 24 hours after re-priming, check if the surface is properly primed (wetting the surface should not change its colour.)

WARNING!

The non-laminated product is suitable for wiping with a damp cloth, but not scrubbing! The surface to be papered must have a temperature of at least 10°C.

THE SURFACE TO BE PAPERED MUST BE:



After running a hand over it, the wall must not leave a white deposit.

In case of any problems or doubts during hanging, stop the installation and contact Eurokonzept for technical support at **+63 9178806556, or sales@eurokonzept.com.ph** Fully-laid wallpapers cannot be subject to a complaint without removing them and sending them for expert opinion.

Please note that the wallpaper is washable as a dry product. During gluing, the material is soaked with glue and as a natural effect of soaking the material and paint the wallpaper is vulnerable to abrasion, therefore it should be handled gently during hanging. After drying and vulcanizing with adhesive, its washable properties return.

In case of any irregularities, inform the seller about it **before hanging**, or after placing two panels at most, **not after the whole of the wallpaper has been glued.**

WALL PREPARATION - WET ZONE

(ONLY FOR SELF-ADHESIVE LAMINATE VINYL WALLPAPER)

Surfaces such as:
parget, concrete, plaster

Hang the wallpaper on a smooth, **WATERPROOFED** wall. For waterproofing, **TEKNOS TIMANTTI W MOISTURE SEALER** is to be used, which should be laid over the entire surface of the wet zone of the bathroom. Wait at least 48 hours after waterproofing before starting to hang the wallpaper. Remember to properly seal the corners with corner sealing tape.

The edges and connections of the wallpaper panels and the places where taps are installed should be protected with silicone. It is recommended to have as few holes in the wallpaper as possible. We do not recommend installing additional elements of equipment on the wallpaper, such as: shelves, soap dispensers, etc.

1. Wallpapering should take place at the very end of renovation.
2. Before starting wallpapering, the room should be cleaned after renovation.
3. During application and 24 hours after

application, do not ventilate the room, use air conditioning, or cause drafts or sudden temperature changes.

4. The wallpapered wall should be:
 - Perfectly smooth - the wallpaper will not hide the unevenness of the wall - it will even emphasize it.
 - In a uniform light colour.
 - Waterproofed.
 - Dry.

5. WATERPROOFING:

- apply smooth gypsum plaster
- wait till plaster is completely dry
- Apply **TEKNOS TIMANTTI W MOISTURE SEALER** (Before use stir Teknos Timantti W thoroughly. Apply by brush or roller. Apply the first coat with sealer diluted with water in the ratio of 1 : 1. The second coat is applied with undiluted sealer after a drying time of 24h hours.)
- Do not use any other primers before or after applying **TEKNOS TIMANTTI W**.
- Wait 48 hours before applying wallpaper and seal edges with silicone.

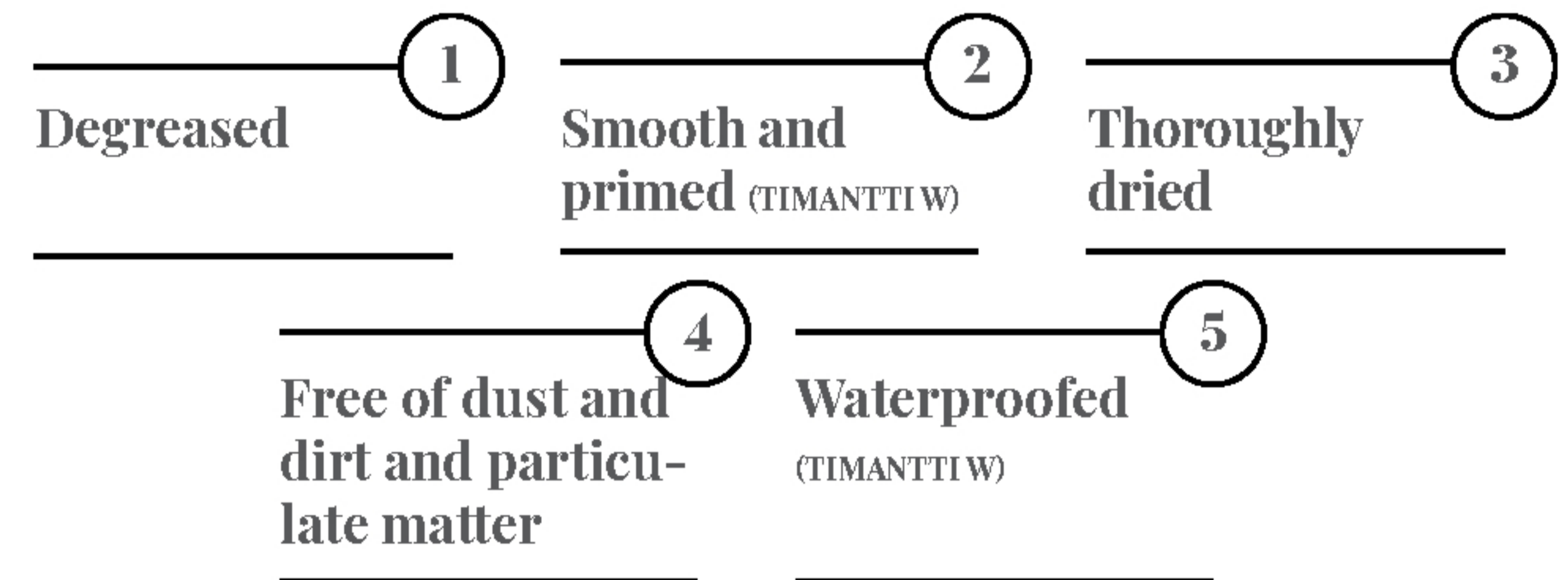
6. Adjacent walls should be painted before wallpapering! The colour of the adjacent walls should extend (a few mm) to the wall to be wallpapered.

(ONLY FOR LAMINATE VINYL WALLPAPER)

WARNING!

The surface to be papered must have a temperature of at least 10°C.

THE SURFACE TO BE PAPERED MUST BE:

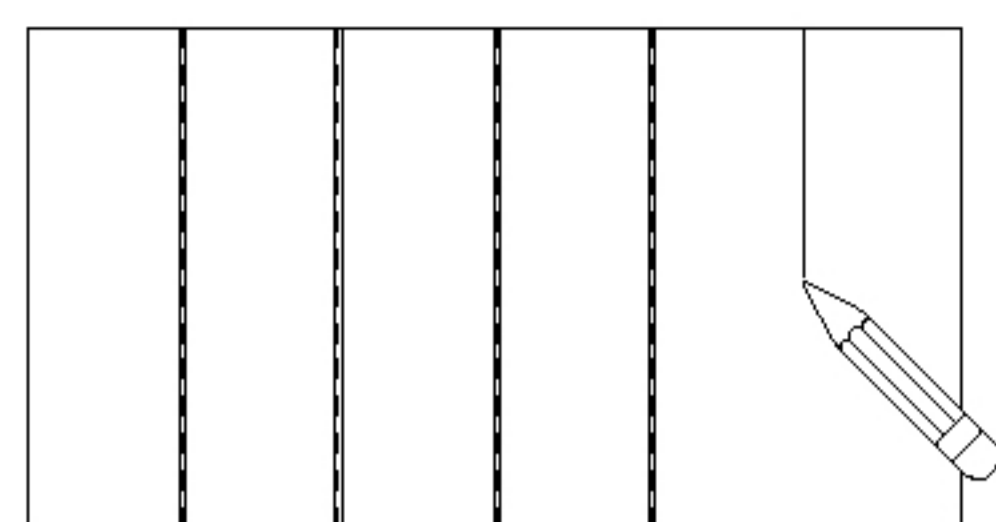
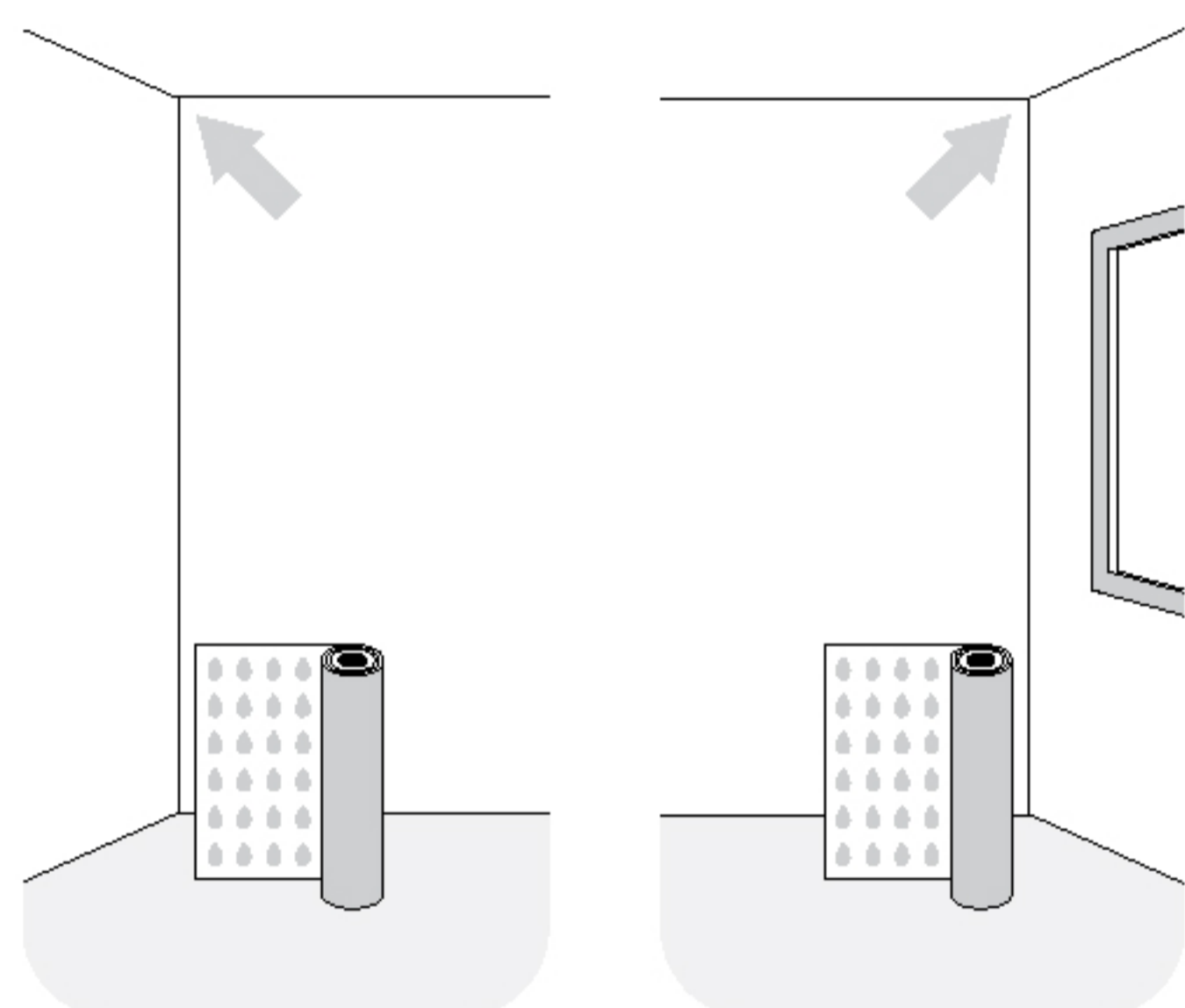


After running a hand over it, the wall must not leave a white deposit.

If you have questions or concerns during hanging do not hesitate to **contact us by phone: +63 917-880-6556**

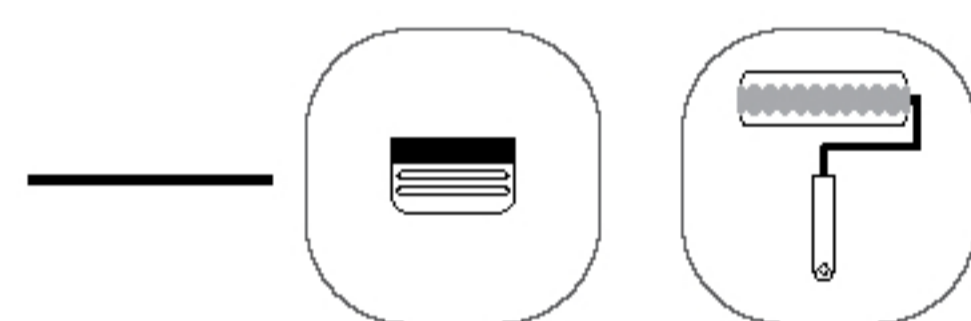
HANGING WALL-PAPER WITH ADHESIVE - BUTT JOINT METHOD

- VINYL ON NON-WOVEN FABRIC
- SMOOTH NON-WOVEN FABRIC



In order to stick the print evenly, you can measure and draw vertical lines on the wall approx. 2 cm narrower than the width of the wallpaper or use a laser level.

Stick the wallpaper from the left corner of the room, from the window to the door; this will help to avoid shadows on the wallpaper.



A fresh wall - covered with gypsum plaster, plasterboard or other absorbent building materials, must be primed twice with deeply penetrating primer at least 24 hours before application. It is necessary to ensure that the primer soaks into the substrate and does not leave a layer on the surface that could weaken the adhesive.

Wallpapers with geometric designs (and at the customer's request - any of the designs) are prepared for installation by double cutting. Cut the 5 cm overlap with a double cut knife. Instructions are available on page 10-11.

HANGING WALLPAPER WITH ADHESIVE - BUTT JOINT METHOD

1

Stick the wallpaper from top to bottom and smooth with a squeegee. Smooth the wallpaper from the centre to the edges to remove any air bubbles. The wallpaper must adhere evenly and firmly to the surface of the wall at all points.

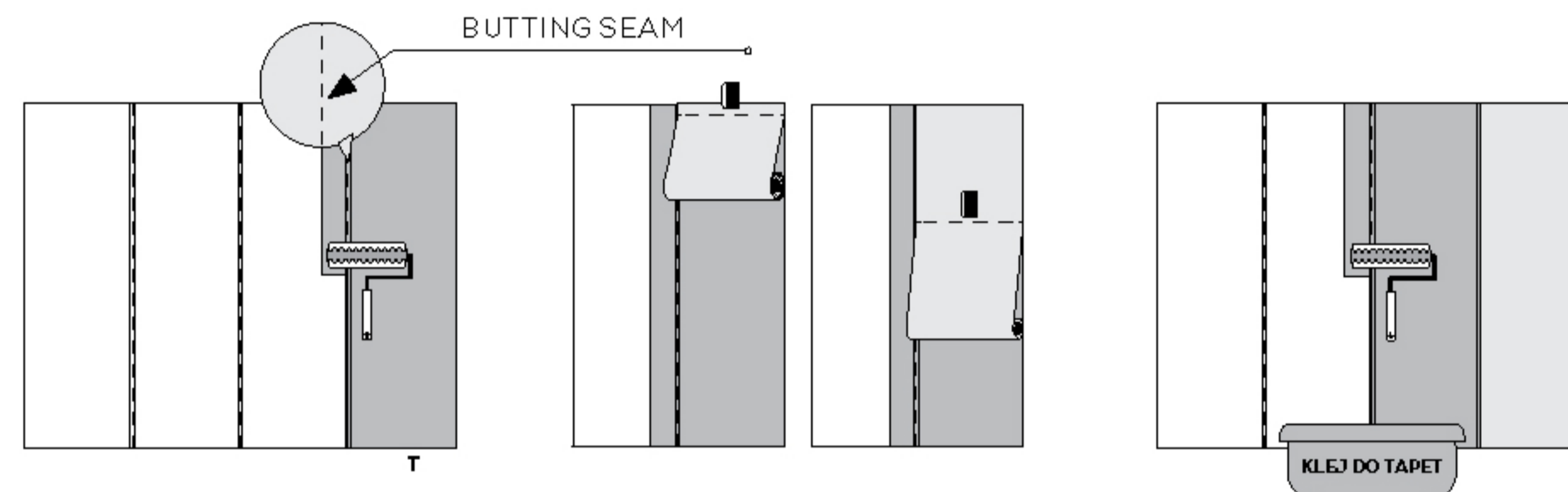
2

Apply the adhesive only to the wall - not to the wallpaper. Apply the adhesive systematically in a width slightly larger than the panel to be applied, so that it does not dry out before the wallpaper is applied.

3

Wallpapers on vinyl on non-woven fabric (350 g and 440 g) should be glued with a heavy wallpaper adhesive (e.g. Wallfix Heavy), wallpaper on smooth non-woven fabric (220 g) with standard wallpaper adhesive. (e.g. Wallfix Medium).

BUTTING SEAM



4

Dark wallpapers should be applied with a roller, and excess adhesive should be removed point-by-point (not wiped off).

5

Edges - before the application of black wallpapers, mask the edges with a black felt-tip pen to prevent the wallpaper edge being visible.

6

Wallpapers not protected with varnish are not suitable for scrubbing - when wiping dark wallpaper with a hand or a cloth, it may leave a delicate paint deposit. We encourage you to protect the wallpaper with Aquaceramic varnish.

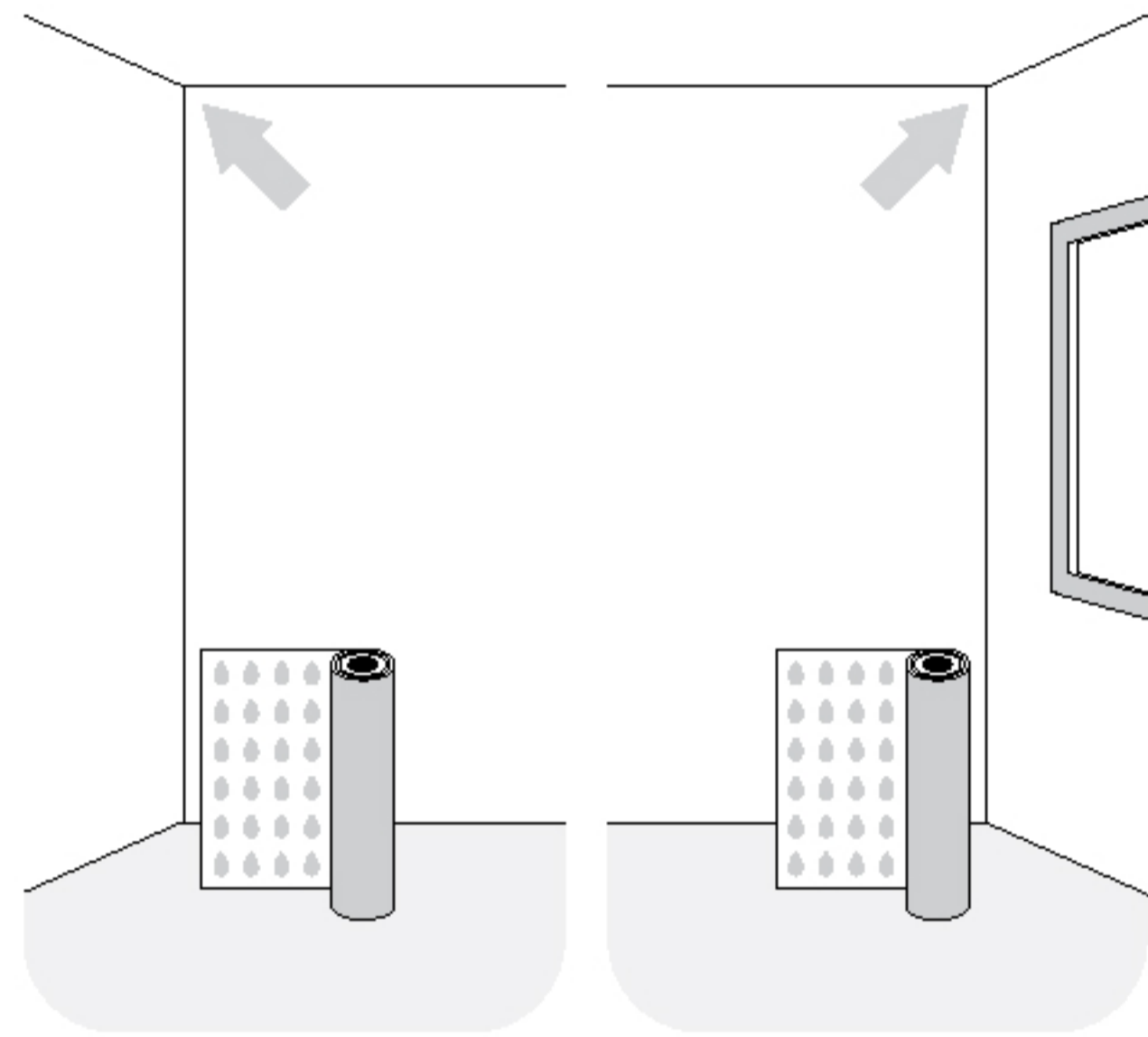
7

The wallpaper should be allowed to dry slowly at a constant temperature for several days, so it is necessary to avoid sudden cooling and heating of the room being covered. The room should not be aired for at least 24h. Do not move the glued wallpaper, as it may damage it. In case of imprecise positioning of the wallpaper, peel it off and repeat the application. Remember to match the design of individual wallpaper strips.

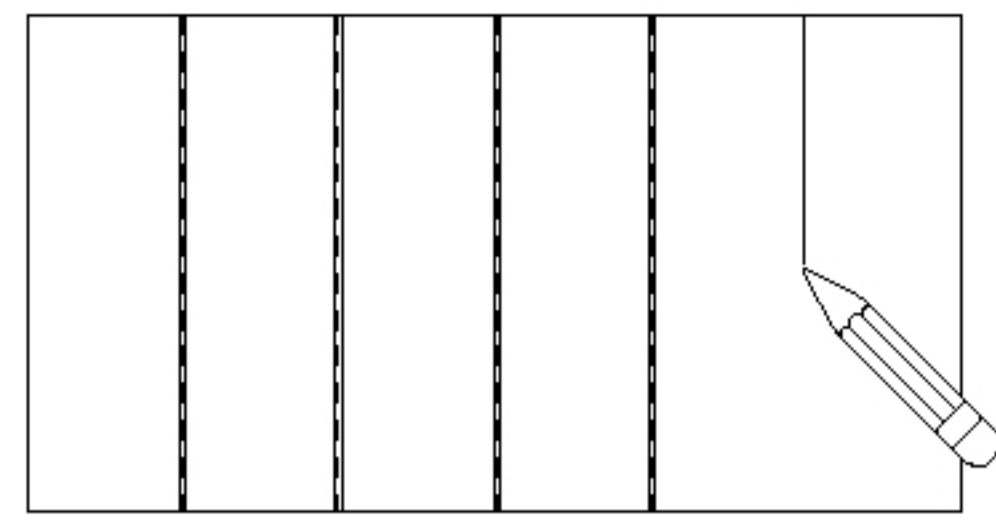
HANGING WALLPAPER WITH ADHESIVE - BUTT JOINT METHOD

HANGING WALLPAPER WITH ADHESIVE - DOUBLE CUT METHOD

- VINYL ON NON-WOVEN FABRIC
- SMOOTH NON-WOVEN FABRIC

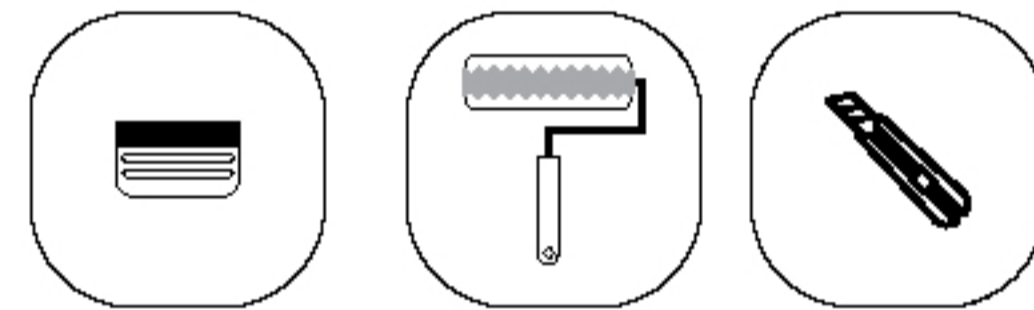


A wall covered with paint should be primed once, and in the case of a thick layer of paint (e.g. silicone, washable), rub with sandpaper (to increase the adhesion of the adhesive to the substrate) and degrease.



In order to stick the print evenly, you can measure and draw vertical lines on the wall approx. 2 cm narrower than the width of the wallpaper or use a laser level.

Stick the wallpaper from the left corner of the room, from the window to the door, which allows you to avoid shadows on the wallpaper.



A fresh wall - covered with gypsum plaster, plasterboard or other absorbent building materials, must be primed twice with deeply penetrating primer at least 24 hours before application. It is necessary to ensure that the primer soaks into the substrate and does not leave a layer on the surface that could weaken the adhesive.

1

Stick the wallpaper from top to bottom and smooth with a squeegee. Smooth the wallpaper from the centre to the edges to remove any air bubbles. The wallpaper must adhere evenly and firmly to the surface of the wall at all points.

HANGING WALLPAPER WITH ADHESIVE - DOUBLE CUT METHOD

2

Apply the adhesive only to the wall - not to the wallpaper. Apply the adhesive evenly - taking care not to put on too much, so that it does not leak from under the wallpaper.

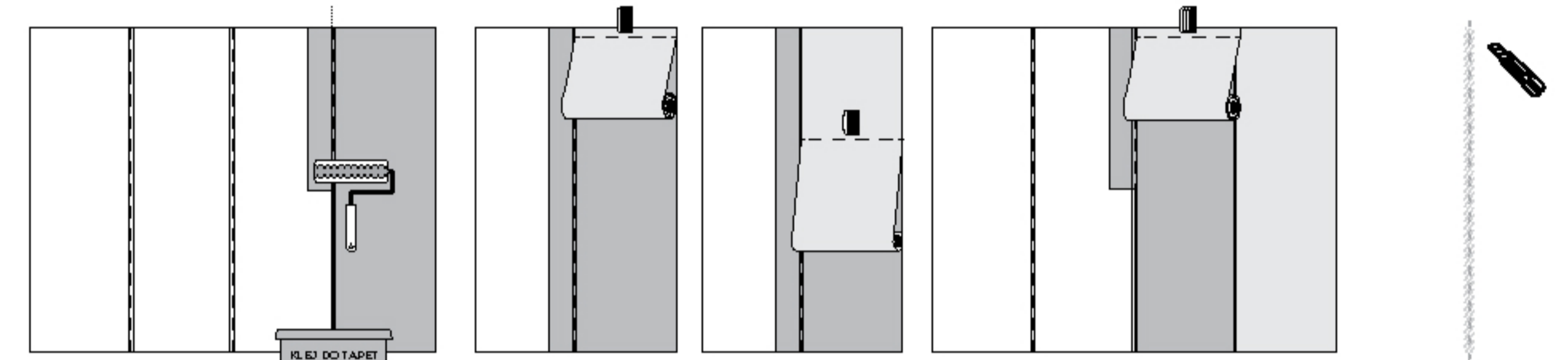
In the case of overlapping wallpapers, remember to spread the edges less heavily at the beginning.

3

After the second strip is glued on, make a cut of the overlap with a ruler - ideally with a spirit level. Make the cut approximately in the centre of the overlap with a sharp cutter at a 35-degree angle so that you cut 2 layers of wallpaper at once - being careful not to cut the wall. You can use a double layer cutter.

4

Attach the first strip of wallpaper without pressing against the tangent edge. Put the next strip about 5 cm (overlap) onto the first one so that the design merges.



5

After cutting, remove the cut-off piece of strip No. 2 and the cut-off piece of strip No. 1 from under strip No. 2. You can gently fold back both strips and, if necessary, lightly apply adhesive.

6

Next connect the edges, remembering to remove the adhesive under the wallpaper point-by-point without rubbing the local area - use a damp cloth so as not to damage the wallpaper soaked with adhesive.

7

In the same way, connect successive strips until the complete picture is obtained on the wall. The double cut allows for perfect, practically invisible joints between pieces of wallpaper.

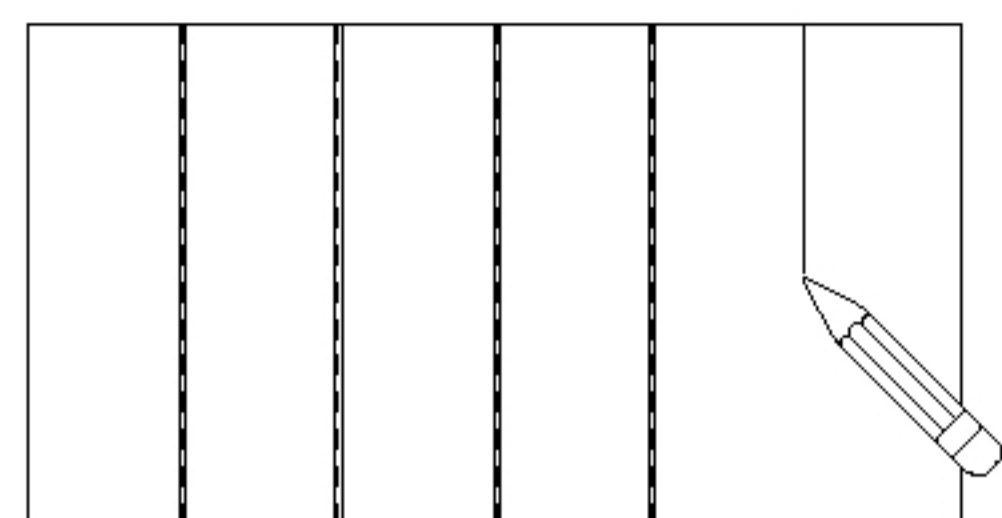
8

Wallpapers not protected with varnish are not suitable for scrubbing - when wiping dark wallpaper with a hand or a cloth, it may leave a delicate paint deposit. We encourage you to protect the wallpaper with Aquaceramic varnish.

The wallpaper should be allowed to dry slowly at a constant temperature for several days, so it is necessary to avoid sudden cooling and heating of the room being covered. The room should not be aired for at least 24h. Do not move the glued wallpaper, as it may damage it. In case of imprecise positioning of the wallpaper, peel it off and repeat the application. Remember to match the design of individual wallpaper strips. Do not move the glued wallpaper, as it may damage it. In case of imprecise positioning of the wallpaper, peel it off and repeat the application. Remember to match the design of individual wallpaper strips

HANGING OF SELF-ADHESIVE LAMINATED WALLPAPER

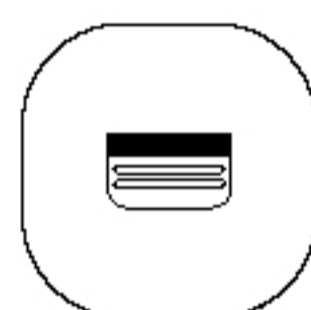
- HANGING IN A WET ZONE IN A BATHROOM
- HANGING IN A WET ZONE AND THE „APRON“ IN A KITCHEN
- HANGING IN A DRY ZONE, ROOM
- HANGING ON TILES, FURNITURE, LACOBEL OR GLASS



In order to stick the print evenly, you can measure and draw vertical lines on the wall approx. 2 cm narrower than the width of the wallpaper or use a laser level.

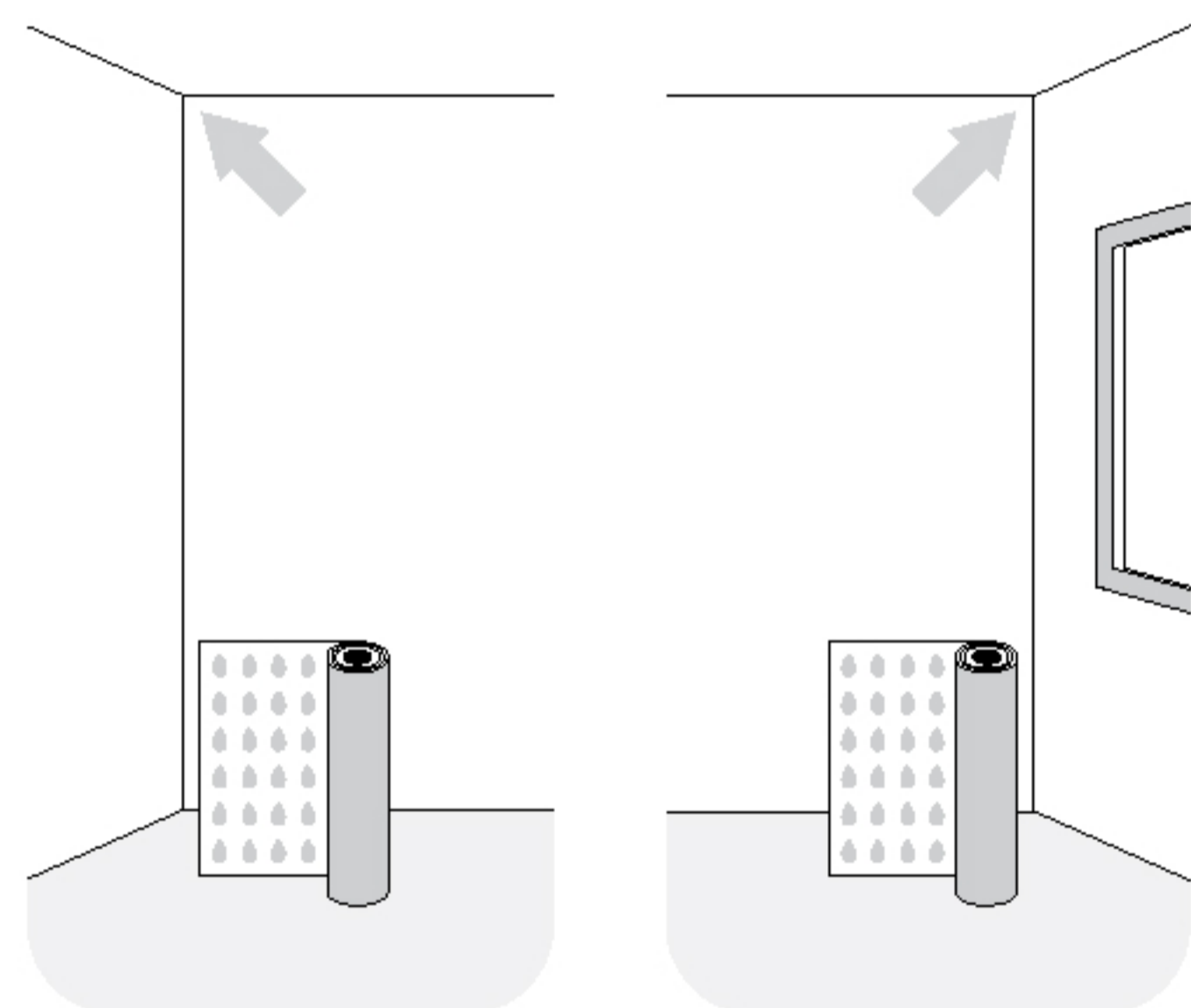
Stick the wallpaper from the left corner of the room, from the window to the door, which allows you to avoid shadows on the wallpaper.

IN A WET ZONE



Hang the wallpaper on a smooth, **WATERPROOFED** wall. For waterproofing, **TEKNOS TIMANTTI W MOISTURE SEALER** is to be used, which should be laid over the entire surface of the wet zone of the bathroom. Wait at least 48 hours after priming before starting to hang the wallpaper. Remember to properly seal the corners with corner sealing tape.

no waterproofing is needed in a dry zone



ADHESIVE DROPLETS ARE LOCATED ON THE INNER PART OF THE WALLPAPER.

1

Do not apply adhesive or water to the wallpaper or walls

Start by removing 10 cm of the backing paper and sticking the top edge of the wallpaper by pressing the surface with the squeegee against the wall, checking that it is long enough to cover the entire wall and that it is stuck straight.

2

Roll the wallpaper out with the design inwards starting from the bottom and stick it from top to bottom and smooth with a squeegee, alternatively you can use a payment card wrapped in fabric. Smooth the wallpaper from the centre to the edges to remove any air bubbles. The wallpaper must adhere evenly and firmly to the surface of the wall at all points.

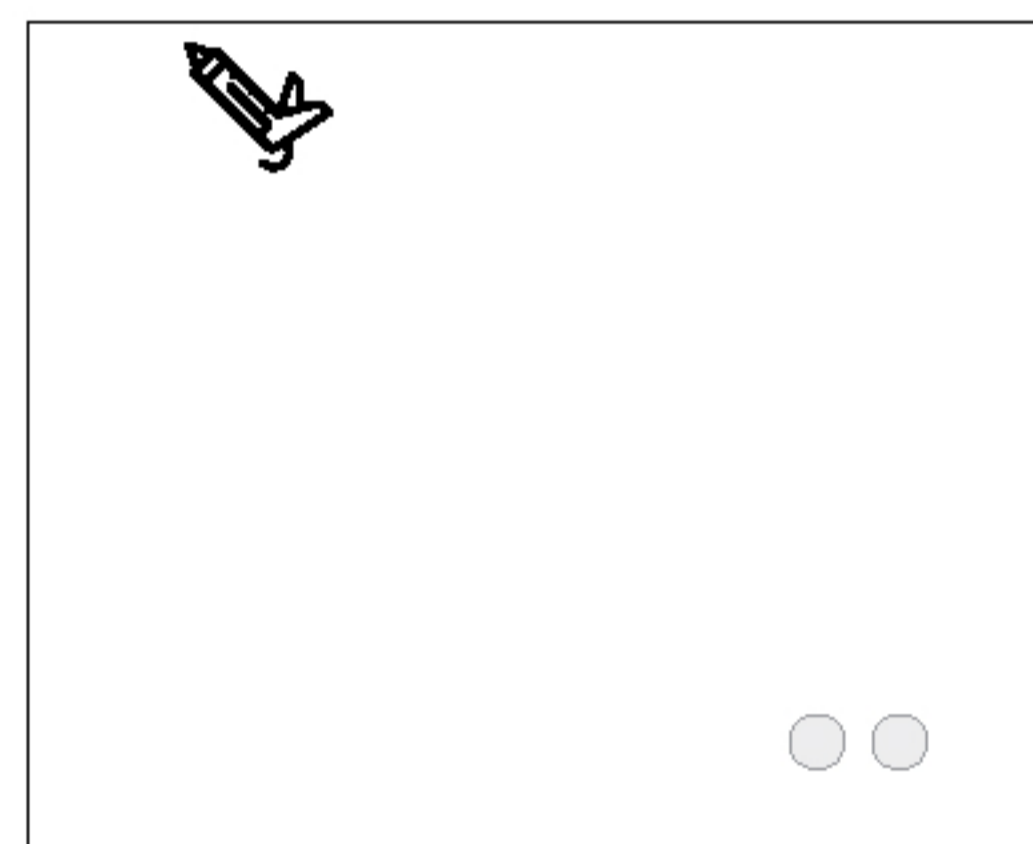
3

Pull the backing paper evenly, do not pull all the paper at once.

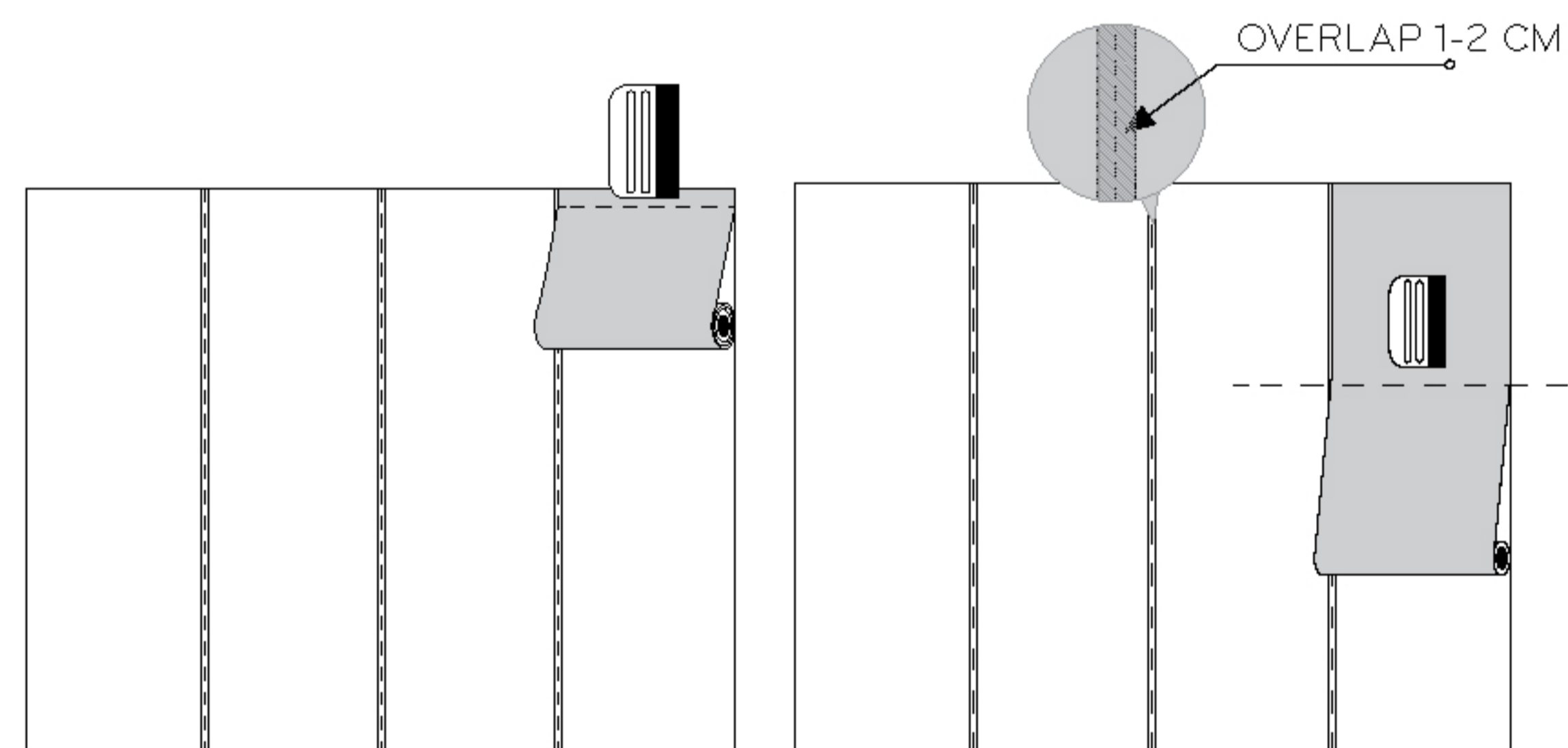
In case of imprecise positioning, peel it off and repeat the application. Remember to match the design of individual wallpaper strips.

4

IN A WET ZONE



The edges and connections of the wallpaper panels and the places where taps are installed should be protected with silicone. It is recommended to have as few holes in the wallpaper as possible. We do not recommend installing additional elements of equipment on the wallpaper, such as: shelves, soap dispensers, etc.



HANGING ON TILES, FURNITURE, LACOBEL OR GLASS

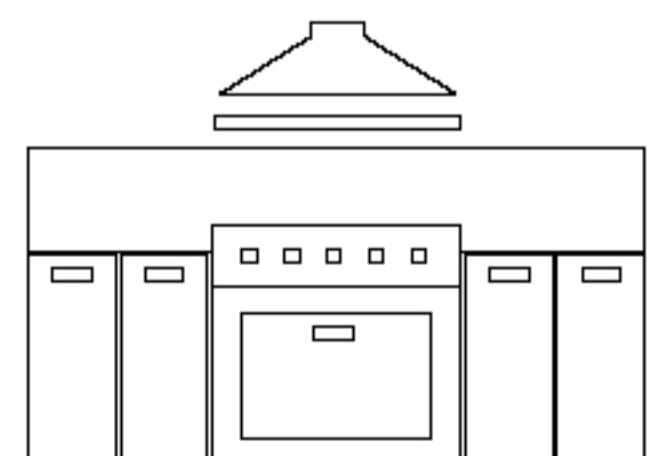
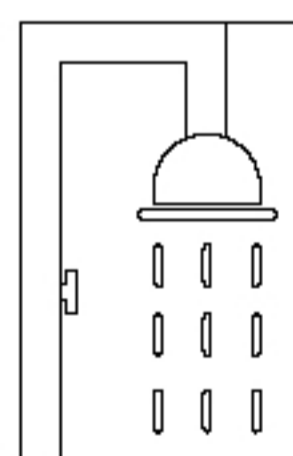
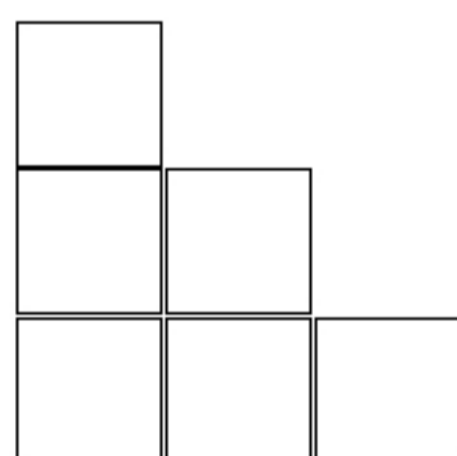
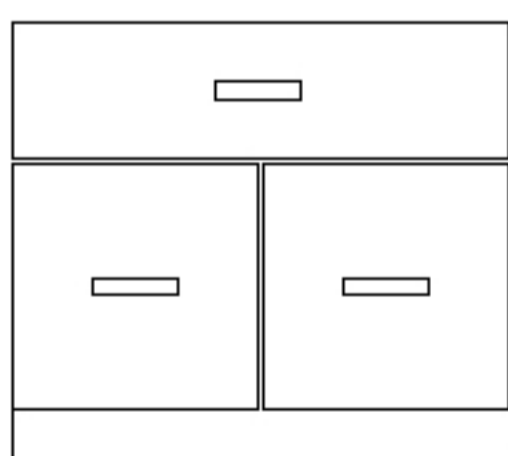
(ONLY FOR LAMINATE VINYL
WALLPAPER)

IN A WET ZONE

- The surface should be washed and degreased. The wallpaper will not stick to any porous surface.
- Grout lines should be filled with a water-resistant compound.
- The wall can also be covered with plexiglass to even out the surface.
- The edges and connections of the wallpaper panels and the places where taps are installed should be protected with silicone

IN A DRY ZONE

- The surface should be washed and degreased. The wallpaper will not stick to any porous surface.
- Grout lines will be visible under the wallpaper - you can (but do not have to) fill them in order to level the surface.
- The wall can also be covered with plexiglass to even out the surface.



HANGING ON TILES, FURNITURE, LACOBEL OR GLASS

euroKonzept

EUROKONZEPT MKTG. PHILS., INC.

www.eurokonzept.com.ph

+63 917-8806-556 | +63 917-1848-002

sales@eurokonzept.com.ph

125 Dangay St. Veterans Village Proj. 7
Quezon City, Philippines