

INSTRUCTION MANUAL



20 X 20 PREMIUM, MESH & WINDOW SUKKAH



HIGHEST QUALITY
BEST PRICE

20X20

PREMIUM, MESH & WINDOW SUKKAH



PARTS LIST

"PLEASE NOTE THE POLES ARE A FEW INCHES SHORTER THAN THEIR LISTED SIZE AS THE CONNECTORS ARE ALSO RESPONSIBLE FOR SOME OF THE LENGTH OF THE SUKKAH."



18-4 FT POLES



8-CORNER CONNECTORS



48-5 FT POLES



4-T CONNECTOR WITH TWO STOPPERS



2- X CONNECTORS



4-T CONNECTOR WITH ONE STOPPER



27-2 WAY CONNECTORS



4-4 WAY CONNECTORS



1 - FOOT PAD



1 - 5 WAY CONNECTORS

WINDOW SUKKAH



8- 10FT WINDOW WALLS

PREMIUM & MESH SUKKAH



7- 10FT SUKKAH WALLS



100 SUKKAH BUNGEEES

STEP 1:

"USE THE 2 WAY CONNECTOR, T (1 STOPPER) CONNECTOR, AND X CONNECTORS TO COMBINE THE POLES INTO LONGER POLES"

USE 2 WAY CONNECTORS TO COMBINE 18,
4FT POLES TO CREATE 8FT POLES



USE 2 WAY CONNECTORS TO COMBINE 36,
5FT POLES TO CREATE 10FT POLES



USE THE T CONNECTORS WITH ONLY ONE STOPPER (VERY IMPORTANT TO
USE THE CORRECT T CONNECTOR) TO COMBINE 8, 5FT POLES TO
CREATE 10FT POLES.



“THESE POLES WILL BE USED AT THE TOP OF YOUR
SUKKAH FRAME. THE T CONNECTOR LETS YOU ADD A CENTRAL
CROSS BEAM TO SUPPORT THE SCHACH.”

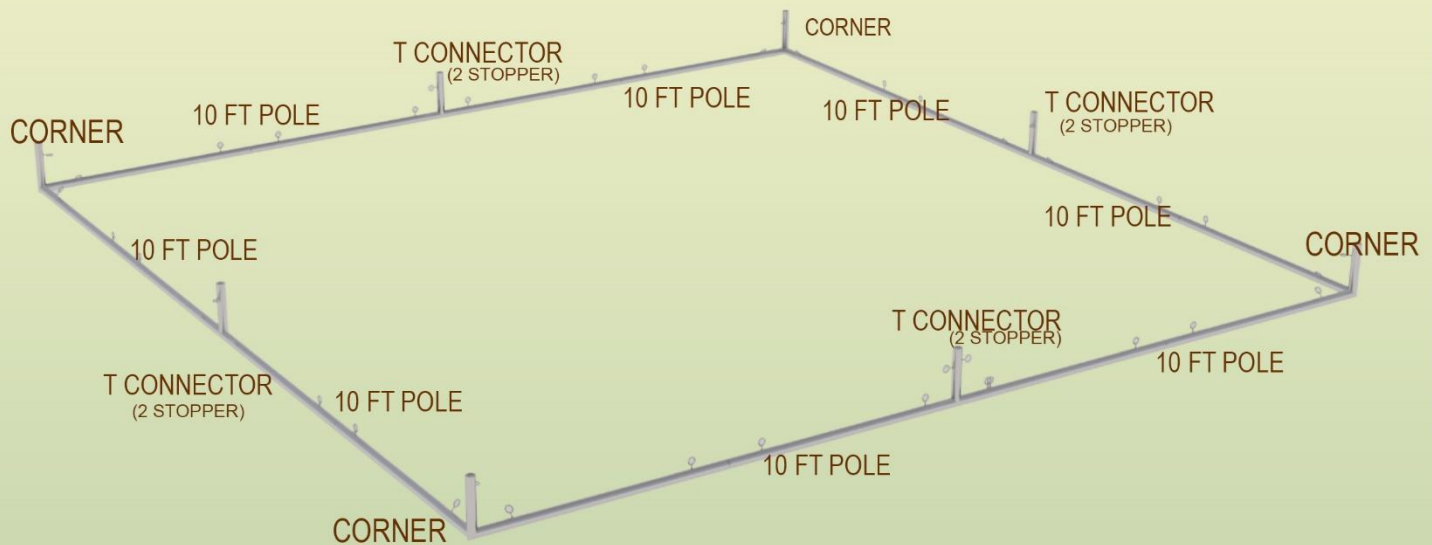
STEP 1:

USE X CONNECTORS TO COMBINE 4,
5FT POLES TO CREATE 10FT POLES



STEP 2:

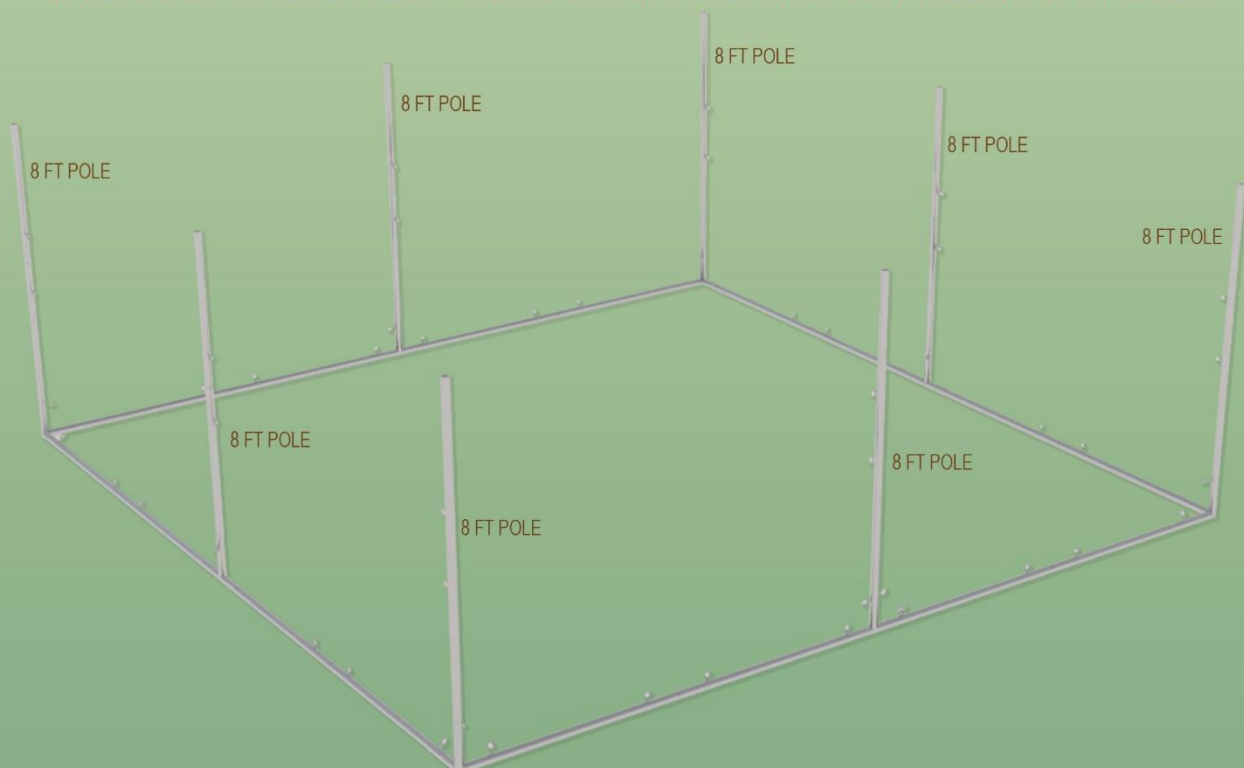
ASSEMBLE THE BASE OF THE SUKKAH BY ARRANGING 10FT POLES CONNECTED SOLELY WITH 2-WAY CONNECTORS, THEN JOIN THEM USING CORNER CONNECTORS, T (2 STOPPER) CONNECTORS.



VERY IMPORTANT: MAKE SURE TO LAY OUT THE CORNER CONNECTORS WITH THE TWO STOPPERS SITTING ON THE GROUND, AS THE VERTICAL POLES SHOULD GO INTO THE SOCKETS WITHOUT ANY STOPPERS.

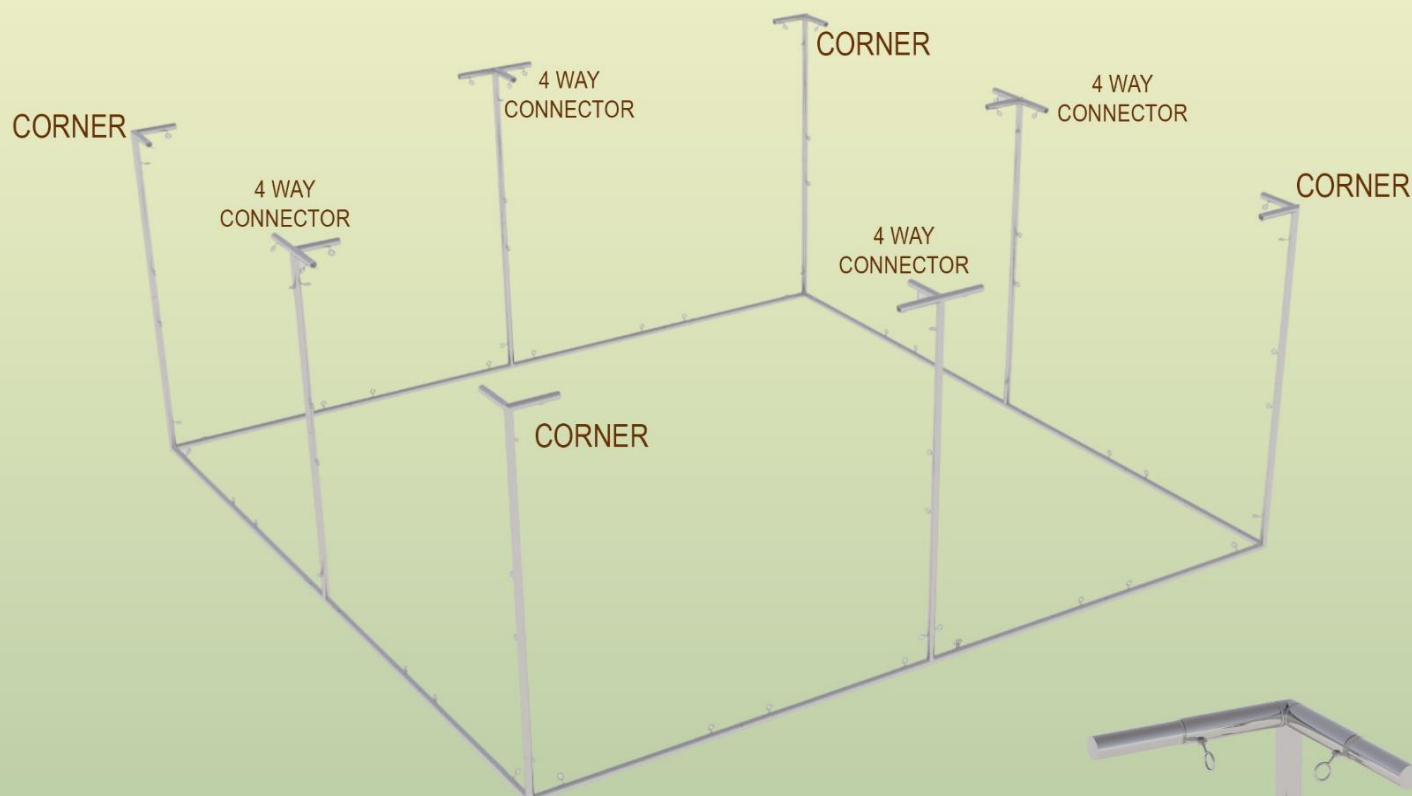
STEP 3:

INSERT THE VERTICAL 8FT POLES AND TIGHTEN. ENSURE THE POLES ARE STABILIZED, ESPECIALLY THE ONES IN THE T CONNECTORS TO PREVENT THEM FROM FALLING



STEP 4:

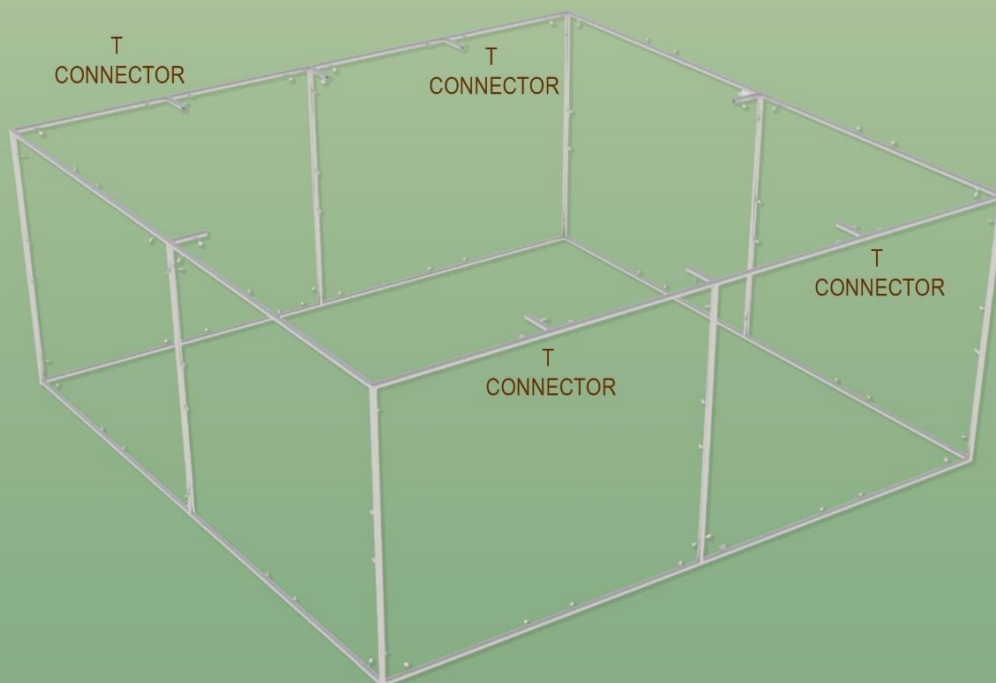
PLACE THE TOP CONNECTORS IN POSITION, BUT DO NOT TIGHTEN THEM UNTIL THE TOP FRAME POLES ARE INSERTED.



VERY IMPORTANT: BE SURE TO PLACE THE CORNER CONNECTORS IN TO THE VERTICAL POLES USING THE SOCKET WHICH DOES NOT HAVE A STOPPER.

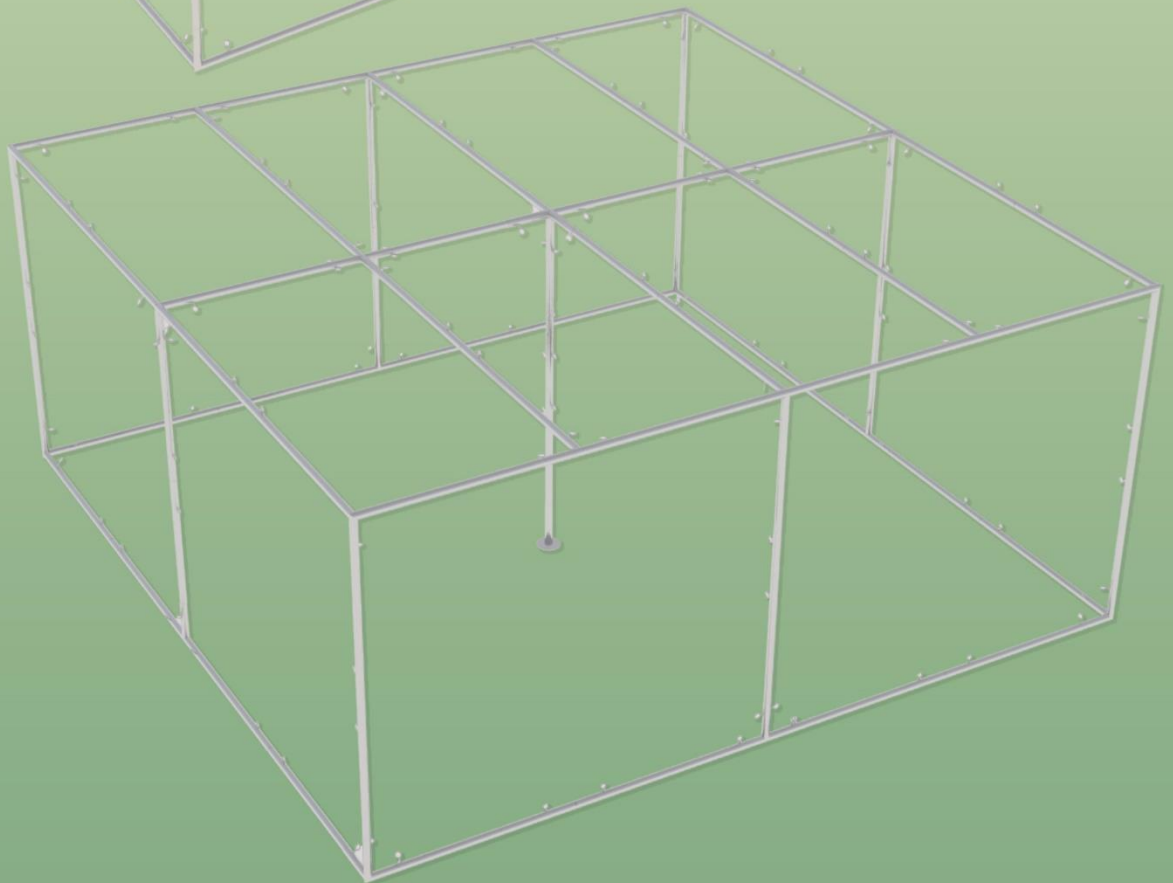
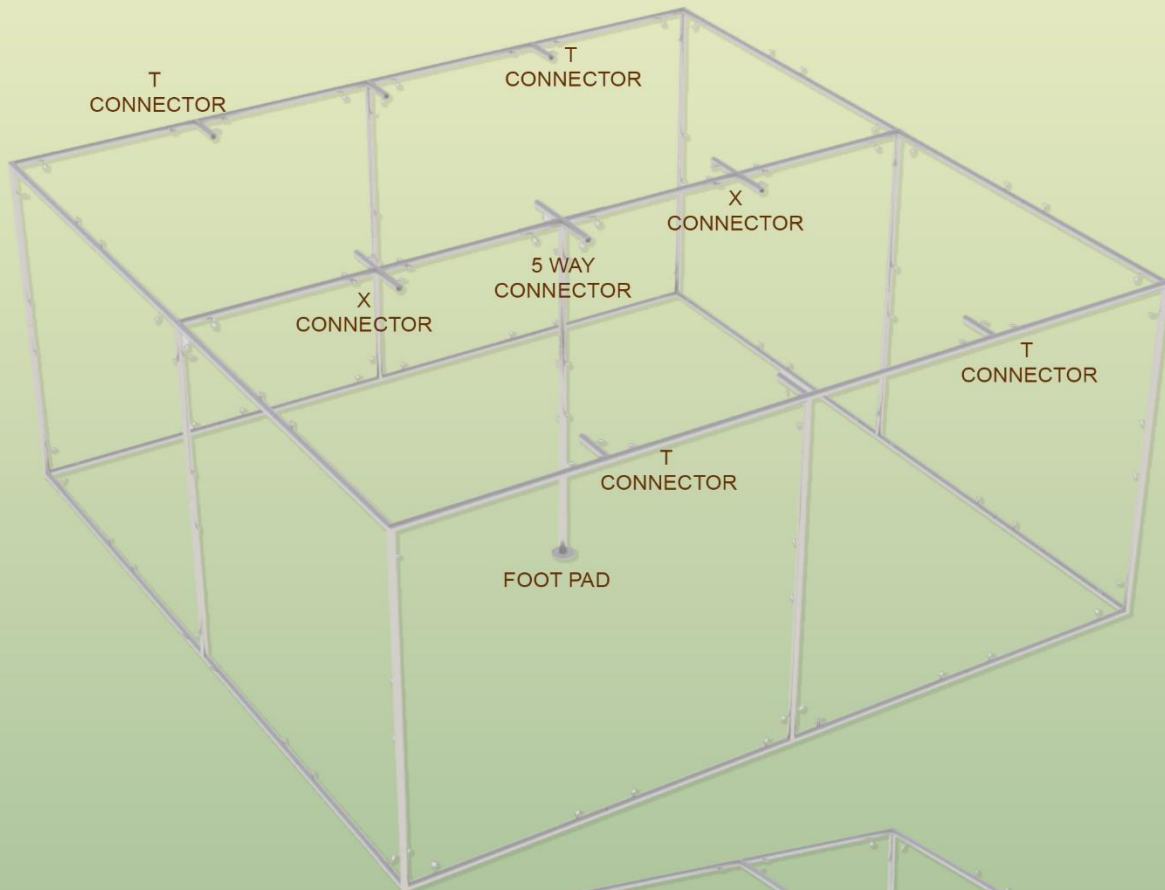
STEP 5:

BEGIN ASSEMBLING THE TOP OF THE SUKKAH FRAME BY CONNECTING FOUR 10FT POLES WITH 2-WAY CONNECTORS AND FOUR 10FT POLES WITH T CONNECTORS (1 STOPPER). ENSURE THE POLES WITH T CONNECTORS ARE INSERTED PARALLEL TO EACH OTHER, WITH TWO ON EACH SIDE.



STEP 6:

COMPLETE THE SUKKAH ROOF FRAME BY ADDING A CENTRAL BEAM DOWN THE MIDDLE USING 10FT POLES CONNECTED BY X CONNECTORS AND JOINED WITH A 5-WAY CONNECTOR. ENSURE THE X CONNECTORS ALIGN PARALLEL TO THE T CONNECTORS ON THE SIDES. SECURE THE CENTRAL BEAM WITH A VERTICAL POLE AND FOOT PAD. FINISH THE FRAME BY INSERTING 10FT POLES INTO THE REMAINING EMPTY SOCKETS OF THE T AND X CONNECTORS.



STEP 7:

FOR THE WINDOW SUKKAH

START BY STRAPPING THE TWO ENDS OF EACH CANVAS TO THE TOP OF THE FRAME. ONCE THE ENDS ARE SECURED, CONNECT THE SIDE VELCRO STRAPS TO THE NEIGHBORING CANVAS. BE SURE TO PULL THE FABRIC TIGHTLY SO THE WALL IS STURDY AND WELL-SECURED.

THE INSIDE OF THE SUKKAH FABRIC WILL HAVE THE WINDOW COVERS. THE SUKKAH DOOR FABRIC CAN BE PLACED IN ANY FRAME PANEL WHERE IT FITS.

ONCE ALL THE CANVASES ARE HANGING AND CONNECTED, FINISH SECURING THE TOP AND BOTTOM VELCRO STRAPS TO TIGHTEN THE FABRIC AND ENSURE A SECURE FIT.



FOR THE PREMIUM & MESH SUKKAH

ATTACH THE SUKKAH WALLS TO THE FRAME USING THE SUKKAH BUNGEEES. FIRST, HANG THE SUKKAH WALL BY ITS TOP TWO CORNER GROMMETS USING SUKKAH BUNGEEES. FOR AN EVEN FIT, WRAP THE BUNGEE AROUND BOTH SIDES OF THE SUKKAH CORNER.

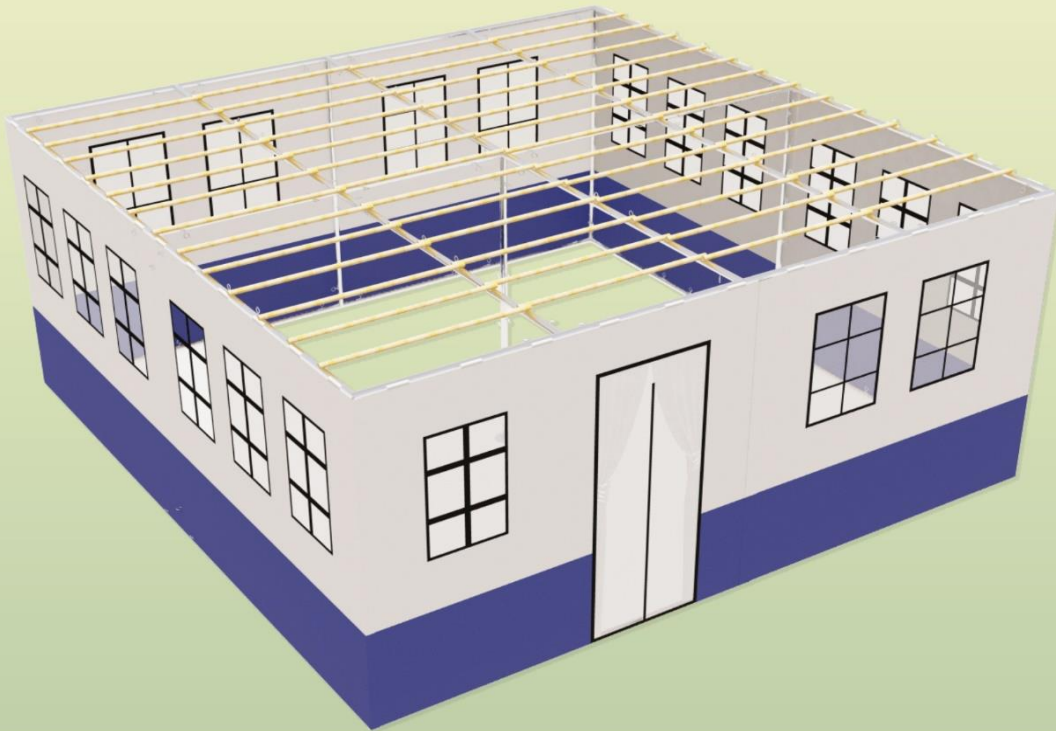


NEXT, SECURE THE BOTTOM TWO CORNER GROMMETS, FOLLOWED BY THE SIDES OF THE SUKKAH WALL. TO SECURE THE WALL TIGHTLY, WRAP THE SUKKAH BUNGEEES AROUND THE POLE TWICE WHEN SECURING THE SIDES. NOTE THAT YOU DO NOT NEED TO PLACE A BUNGEE IN EVERY GROMMET.



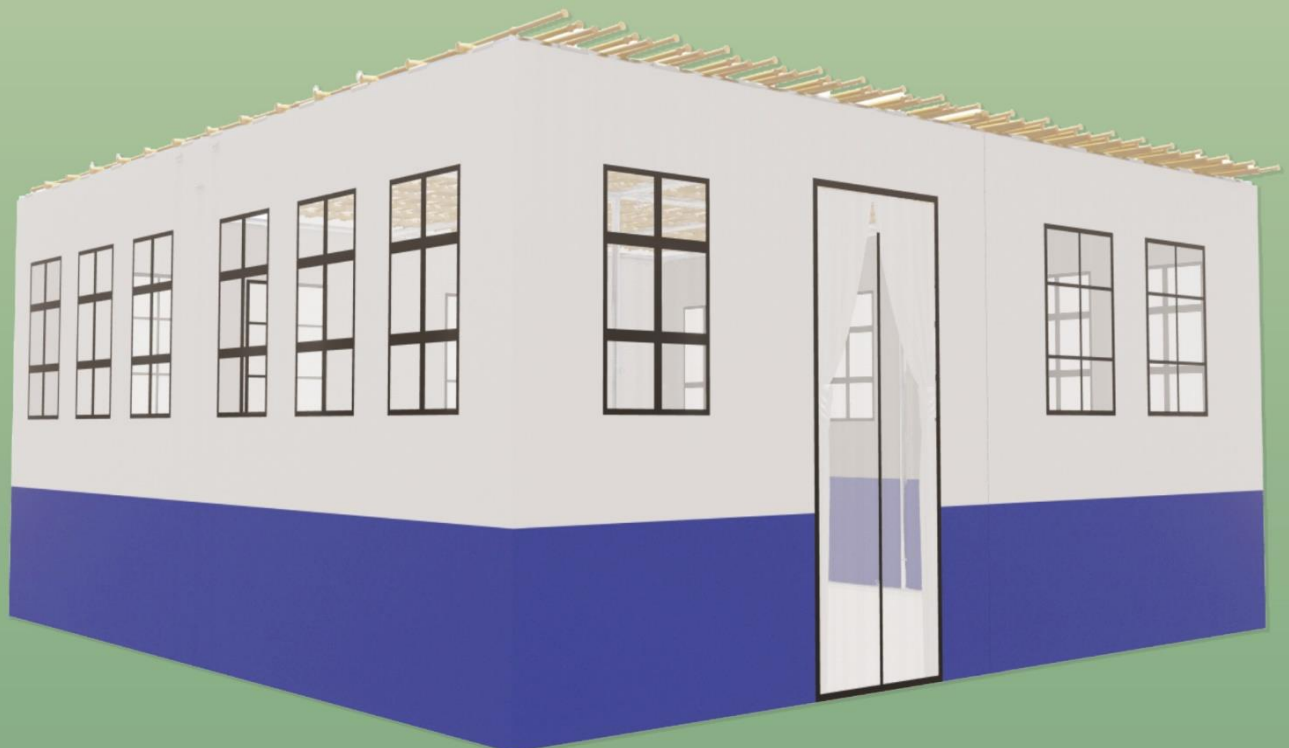
STEP 8:

ARRANGE THE BAMBOO POLES ALONG THE LENGTH OF THE SUKKAH IN PREPARATION FOR THE SCHACH MATS.



STEP 9:

FINALLY, ROLL THE SCHACH MATS DOWN THE LENGTH OF THE SUKKAH, MAKING SURE THE BAMBOO SLATS ARE PERPENDICULAR TO THE BAMBOO SUPPORT POLES AND NOT PARALLEL, TO ENSURE THAT THE SCHACH SITS ON TOP SECURELY. THIS WILL COMPLETE YOUR SUKKAH!



STEP 10:

ENSURE THAT YOUR SUKKAH IS SECURELY ANCHORED TO THE GROUND TO WITHSTAND THE WEATHER CONDITIONS IN YOUR AREA. IF HIGH WINDS ARE EXPECTED, ORDER 20L WATER WEIGHTS FROM AMAZON. IN ADDITION IF NEEDED SECURE THE SUKKAH WITH ROPES FROM THE TOP OF THE SUKKAH DOWN TO THE GROUND.

STEP 11:

STORE YOUR SUKKAH KIT ONLY WHEN COMPLETELY DRY. PURCHASE A STORAGE BAG AT [THESUKKAHPLACE.COM](http://thesukkahplace.com) TO PROTECT YOUR SUKKAH KIT.

**THANK YOU FOR
TRUSTING THE SUKKAH PLACE!**



thesukkahplace.com



info@thesukkahplace.com



Have a Wonderful Chag! Chag Sameach! Gut Yom Tov!