



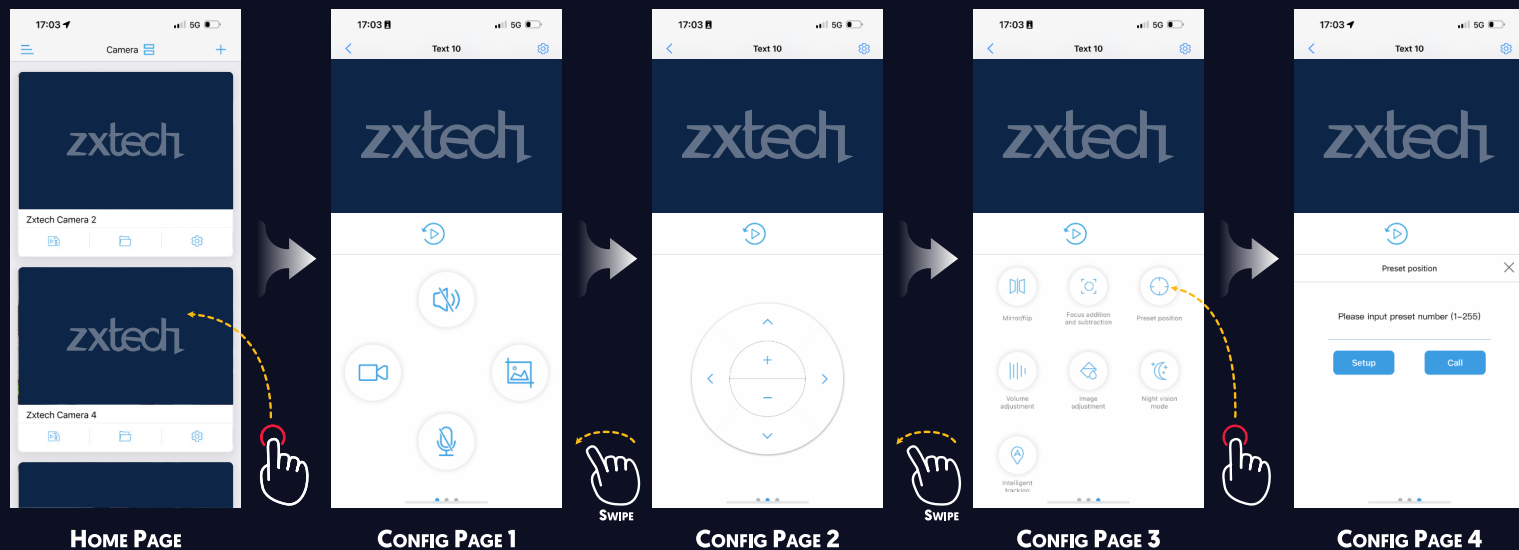
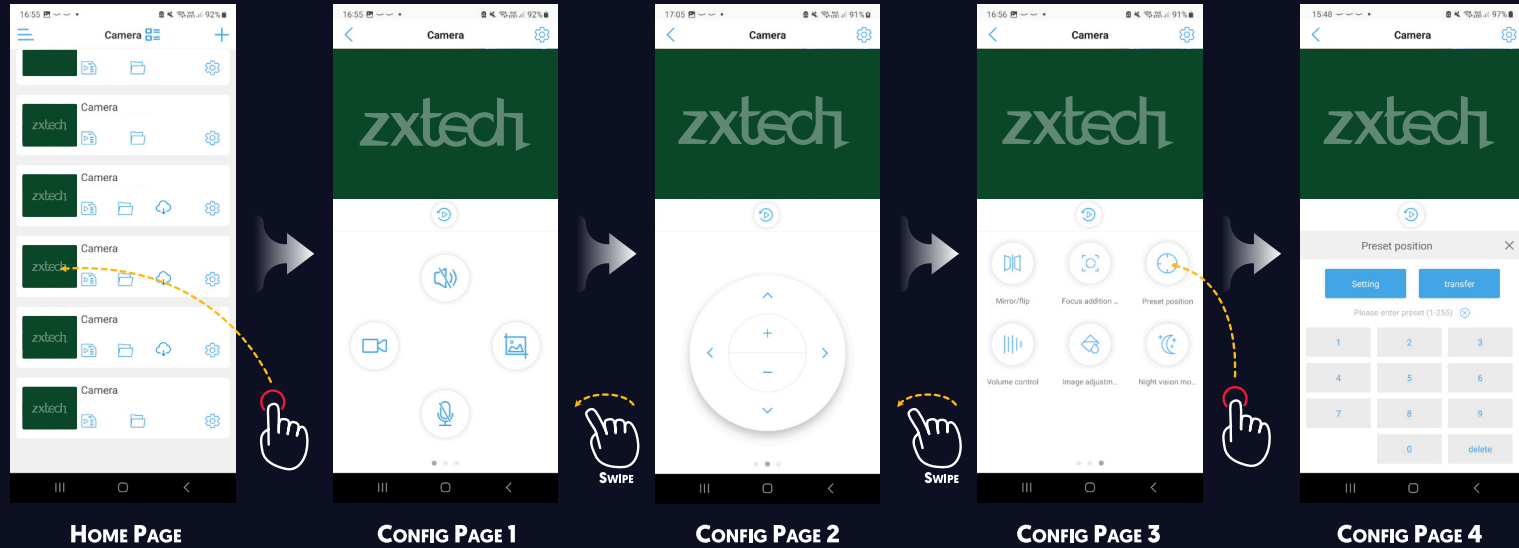
# **ZXTECH WIRELESS PTZ CAMERA PRESET MANUAL**

## **PATROLLING & HUMANOID TRACKING**

**DOMAR.COM**

## GET THE APP

This quick guide presumes you have downloaded the **CAMHIPRO** app and successfully added all the cameras to it. If you have not done so, please refer to the manual included in the box first.



## MODEL DIFFERENCES

Different camera models may use different preset codes. Please refer to the respective columns for instructions specific to your model. Check your model number on the sticker, which is usually located at the back of the camera.

**Do not use this manual for any models other than those mentioned. Doing so may cause irreversible damage to your cameras.**

## WEAR AND TEAR

Patrol is enabled by the motors installed inside the camera and is subject to standard wear and tear. Continuous use of the patrol function can shorten the product's longevity, so use it with caution.

## DO NOT ROTATE BY HAND

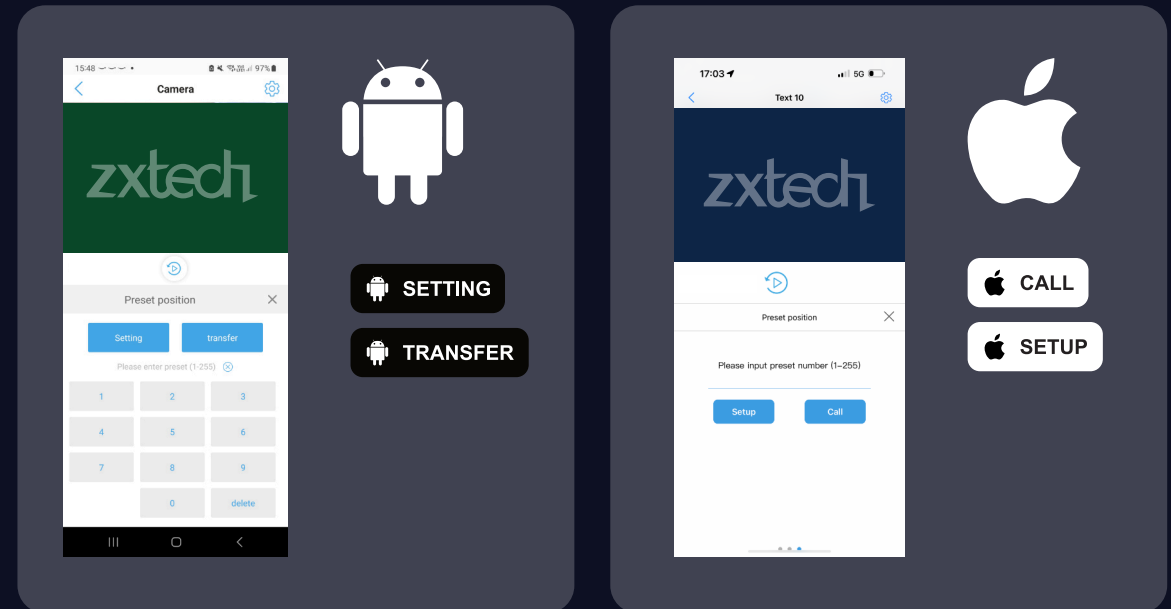
Do not manually rotate the camera, as this can cause damage to the motor by disrupting its alignment and calibration.

## DO NOT POWER UP IN BOX

Do not connect the camera to the power source while it is still in the box. The camera performs an initialisation process when powered up, and the packaging will prevent it from panning and tilting, which can cause damage to the motor.

## TERMINOLOGY DIFFERENCE

There is a terminology difference between setting up and activating a preset on iOS devices and Android devices. This manual includes clear icons to indicate which buttons need to be pressed on each platform.



Input a preset point on Config Page 4, then click "Setup" or "Setting". This preset point will then be saved.



Input a preset point number on Config Page 4, then click "Call" or "Transfer". This preset point will then be activated.

## MCW5W5X, MCW5B5X, MCW5W10X, MCW5B10X

## MCW8B21X

### PATROL

Set up a routine path by configuring the **PRESET POINTS**. The camera will then cruise through these points automatically.

**1-16** SETUP SETTING → **76** CALL TRANSFER

To set up a **PRESET POINT**, use **CONFIG PAGE 3** to navigate to the desired position, and then go to **CONFIG PAGE 4** and press "SETUP" or "SETTING" to save the position between 1 and 16.

Enter 76 and press "CALL" or "TRANSFER" to activate the cruising.

**1-30** SETUP SETTING → **56** CALL TRANSFER

To set up a **PRESET POINT**, use **CONFIG PAGE 3** to navigate to the desired position, and then go to **CONFIG PAGE 4** and press "SETUP" or "SETTING" to save the position between 1 and 30.

Enter 56 and press "CALL" or "TRANSFER" to activate the cruising.

### GUARD POSITION

Set up the **GUARD POINT** so the camera will return to this position after a period of inactivity. You must first **SETUP/SETTING**, and then activate it by **CALL/TRANSFER**.

**86** SETUP SETTING → **86** CALL TRANSFER

**92** SETUP SETTING → **92** CALL TRANSFER

### HUMANOID TRACKING

Set up humanoid tracking so the camera will follow people. It will return to the **GUARD POINT** after a period of inactivity.

**66** SETUP SETTING **ON** | **68** SETUP SETTING **OFF**

**93** SETUP SETTING **ON** | **94** SETUP SETTING **OFF**

### COLLABORATION

If you feel your camera's cruise is out of tune, it is time to perform a routine calibration.

**91** CALL TRANSFER

**34** CALL TRANSFER

### FACTORY RESET

PTZ settings can easily become messy. Use this function to reset everything and start fresh if the camera starts to behave strangely.

**210** SETUP SETTING → **92** CALL TRANSFER

Delete all preset points

Pan Title reset and restore to default.

**40** SETUP SETTING → **115** CALL TRANSFER