

zxtech

WIRELESS CAMERAS MANUAL



QUICK START GUIDE MADE BY DOMAR CCTV

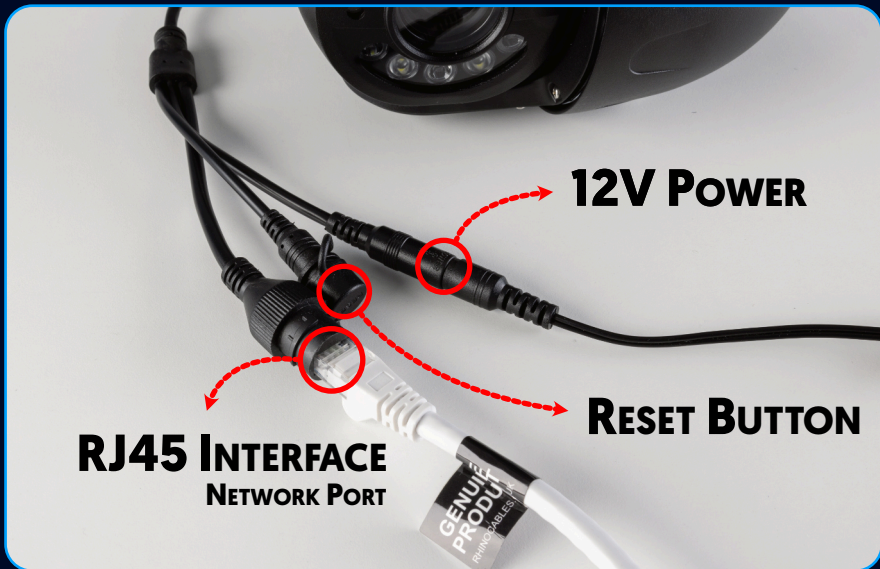
DOMAR.COM



INITIAL SETUP	1
DOWNLOAD THE APP	2
MOBILE SETUP	3
STEP 1: SEARCH FOR NEW CAMERA	3
STEP 2: ADD THE NEW CAMERA	4
STEP 3: CHANGE PASSWORD	5
STEP 4: CONNECT CAMERA TO WIFI	6
STEP 5: READY FOR INSTALLATION	7
SD CARD SETUP	8
STEP 1: SD CARD INSTALLATION	8
STEP 2: FORMAT THE SD CARD	9
STEP 3: SETTING UP MOTION RECORDING	10
STEP 4: SETTING UP RECORDING SCHEDULE	11
STEP 5: PLAYBACK RECORD ON PHONE	12
PC & WEB ACCESS	13
FACTORY RESET	15

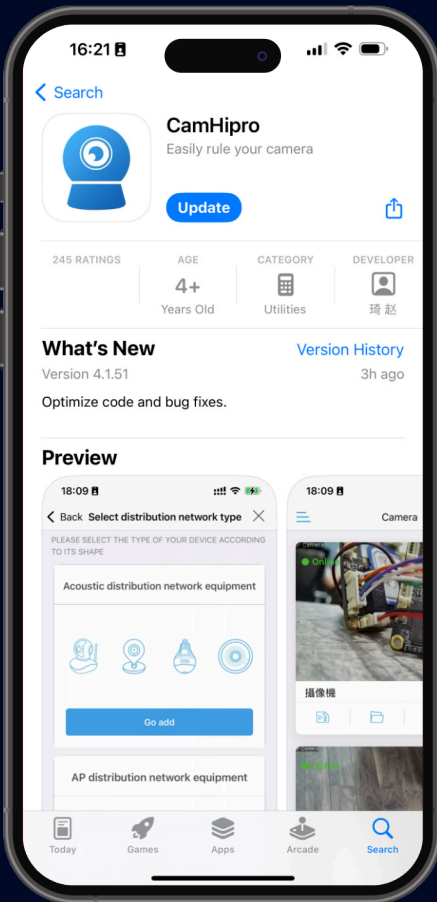
The default username is **admin**
The default password is **admin**

DO NOT power up the camera when it is still in the package.



- Connect the 12V power adapter provided.
- Do NOT use third party power supply units.
- It may need a few minutes to self-check and then start functioning.
- Connect camera to the router via ethernet cable provided.
- Network indicators light solely flashing **GREEN** means network is normal.

- After the camera's initial self checking, download **CAMHIPRO** App from **APP STORE OR GOOGLE PLAY SHOP**.

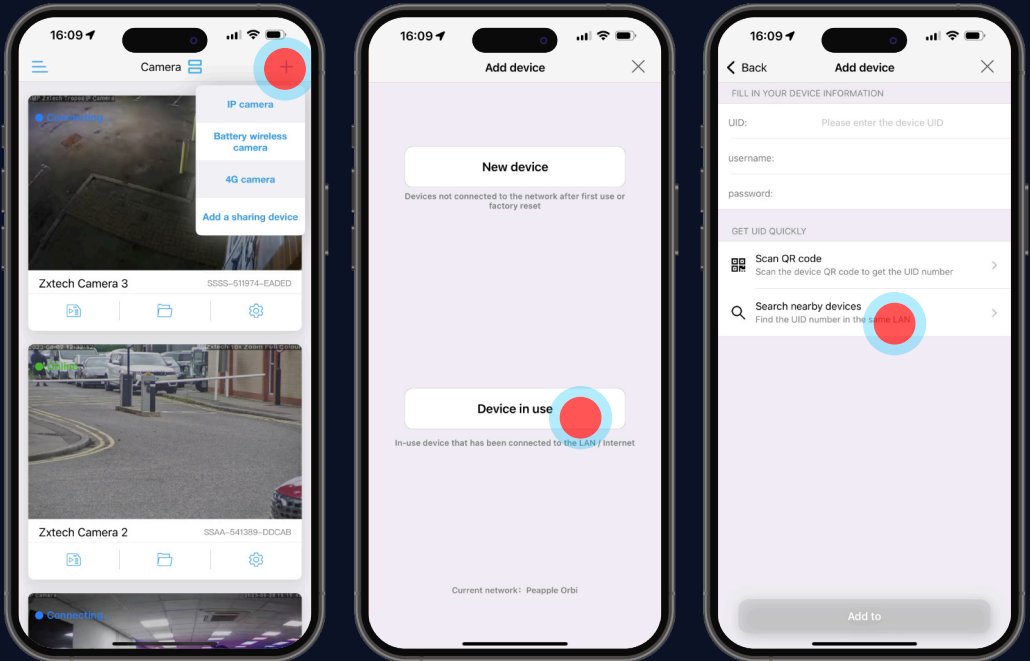


Android



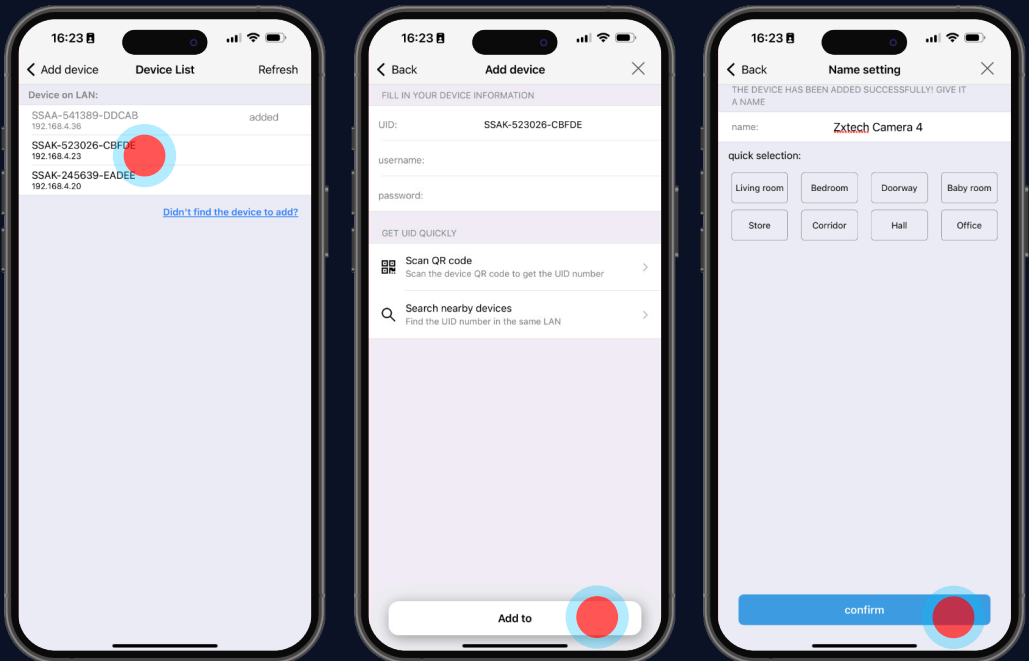
iOS

STEP 1: SEARCH FOR NEW CAMERA



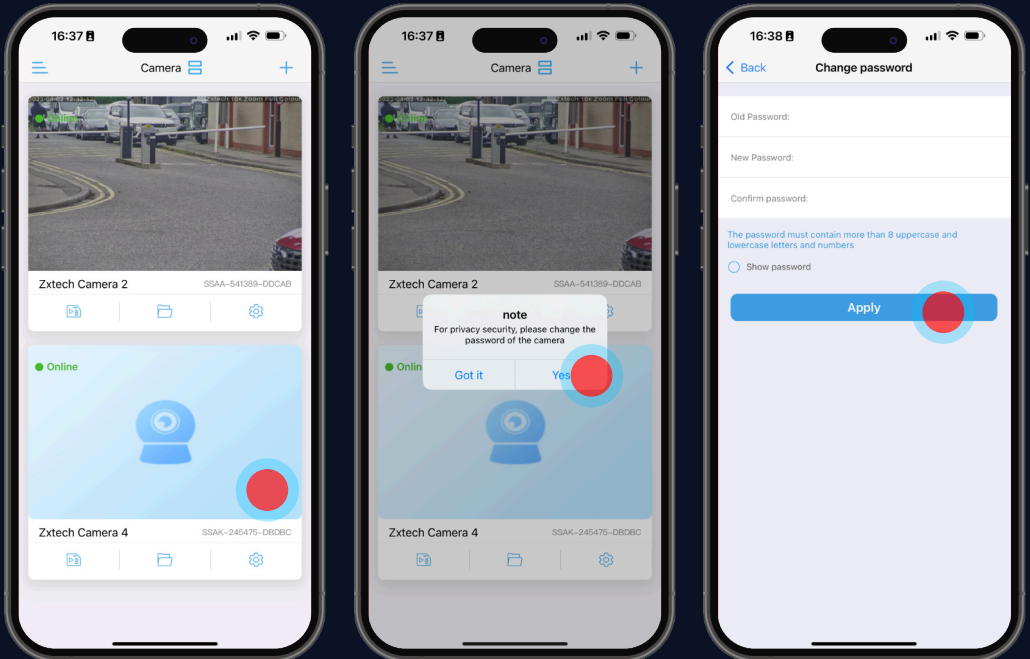
- Tap the "+" Icon on the Top Right Corner.
- Select **IP CAMERA** > **DEVICE IN USE** > Search nearby devices.
- Tap on **SEARCH NEARBY DEVICES** to search for all available devices.

STEP 2: ADD THE NEW CAMERA



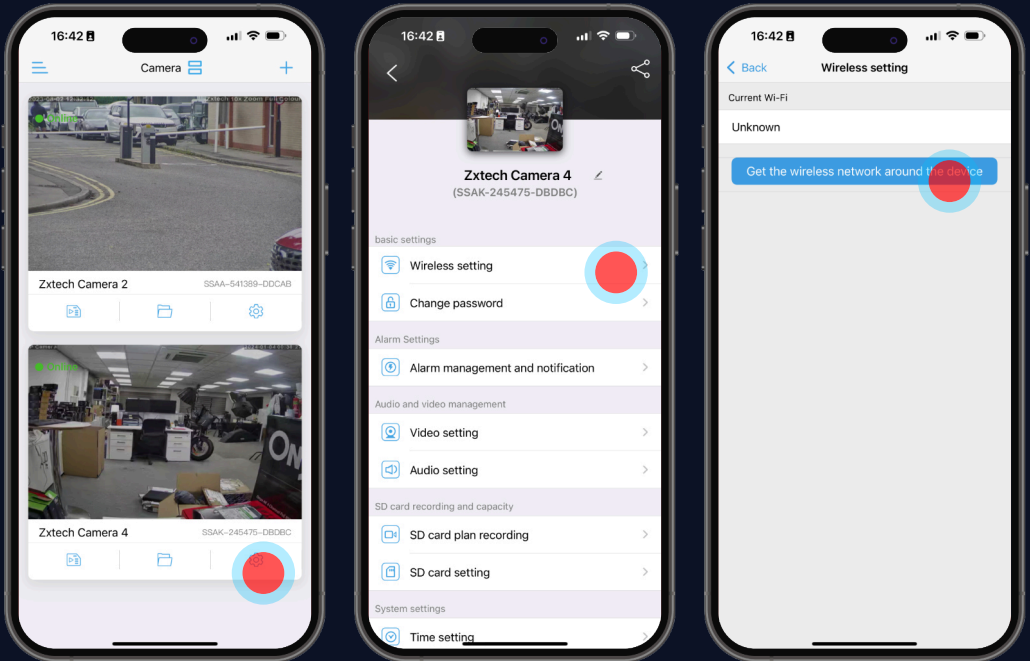
- Choose the device from the list automatically provide.
- The default username and password should be automatically enter.
- If not, the default username is **admin** and password is **admin**
- Confirm to proceed.

STEP 3: CHANGE PASSWORD (COMPULSORY)



- First time you try to view the camera, it will force you to reset the password.
- Tap **YES** to enter the password-resetting page.
- Enter the old (default) password **admin**, and then enter your new password twice.
- Tap Apply to proceed.

STEP 4: CONNECT CAMERA TO WiFi



- Press **WIRELESS SETTING** to setup Wi-Fi.
- Select your home network after Press **GET THE WIRELESS NETWORK AROUND THE DEVICE**.
- Select the correct network, enter your Wi-Fi password and **APPLY**

STEP 5: READY FOR INSTALLATION



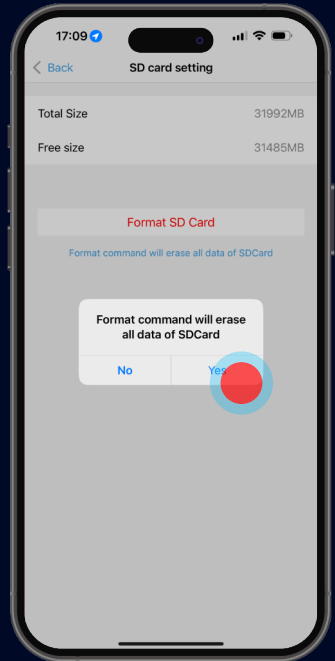
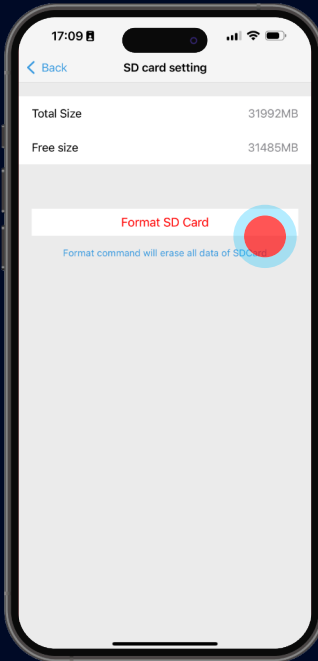
- Once you complete the last step, you may unplug the Ethernet cable.
- The CamHipro App will automatically connect the camera via Wi-Fi.
- Unplugging the power will not alter the camera's settings, and it will be ready for installation.
- Only install the camera after thoroughly testing and confirming satisfaction with its features, since installation signifies usage and nullifies the 30-day return policy.

STEP 1: SD CARD INSTALLATION



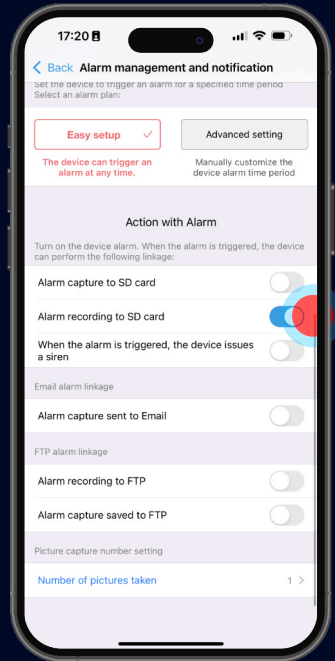
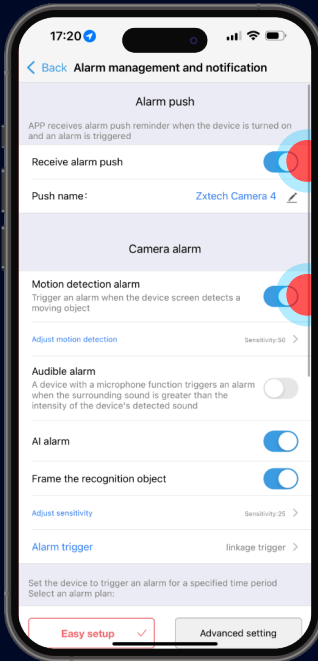
- You may not have the same camera in this manual, but the same principle applies.
- Remove the cover from the camera by unfastening the screws at the bottom. Insert the Micro SD card.

STEP 2: FORMAT THE SD CARD



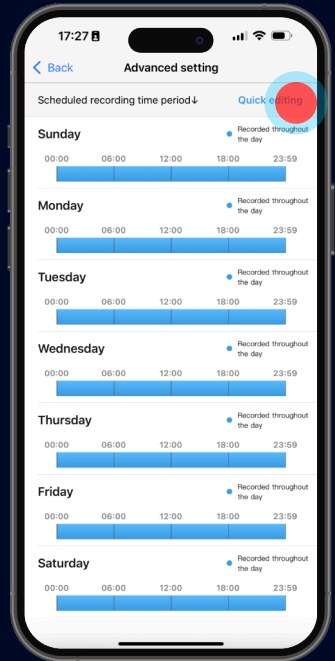
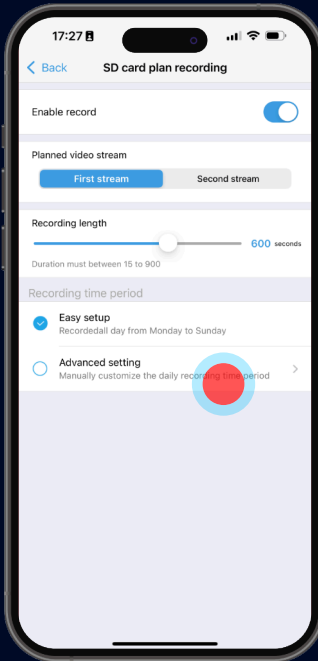
- SD card must be formatted before recording start to work.
- It is recommend to use SD card above **CLASS 10**
- Use **CAMHIPRO > SD CARD SETTING** to Format the SD card when adding for the first time.
- You should be able to see the "**FREE SIZE**" of the SD card after the format. If "Free Size" equals to Zero, you will have to format it again.

STEP 3: SETTING UP MOTION RECORDING



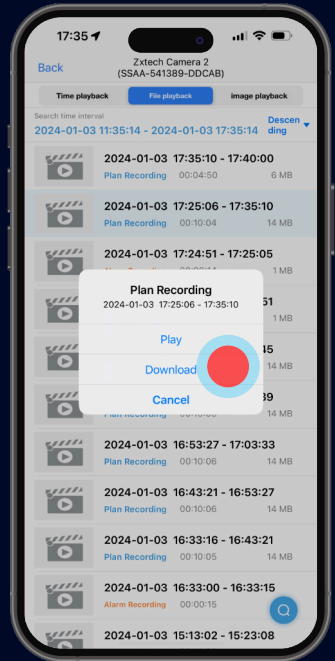
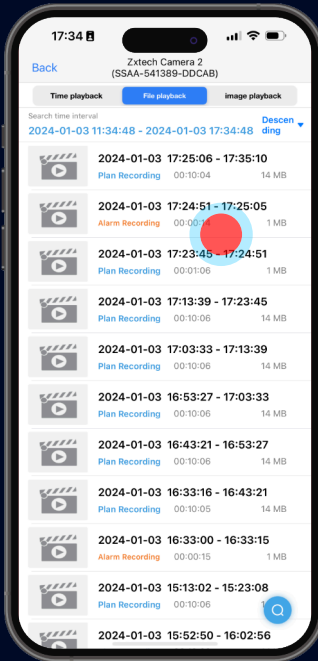
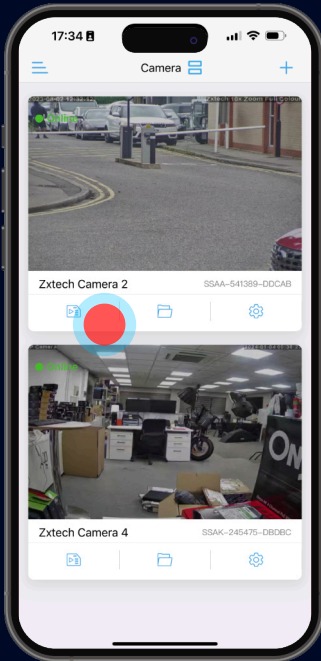
- Set **NOTIFICATION** and **MOTION DETECTION** alarm recording on the phone.
- Turn on **RECEIVE ALARM PUSH** and **MOTION DETECTION ALARM**
- **ALARM RECORDING TO SD CARD** is recommended when the Micro SD card is small.

STEP 4: SETTING UP RECORDING SCHEDULE



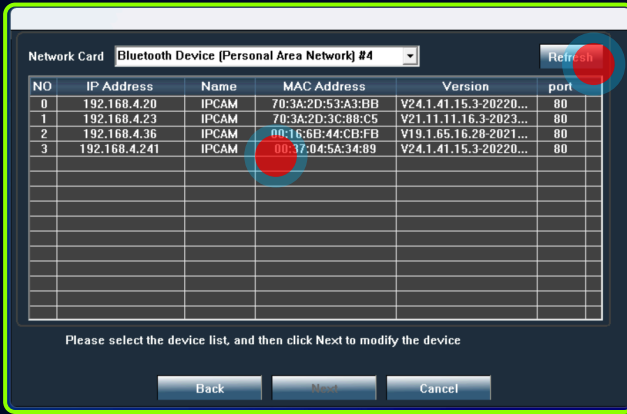
- Go to **SD CARD PLAN RECORDING**
- Tap on **ADVANCED SETTING**
- Tap on the Quick editing and follow the steps to customise the timely recording preferences.

STEP 5: PLAYBACK RECORD ON PHONE

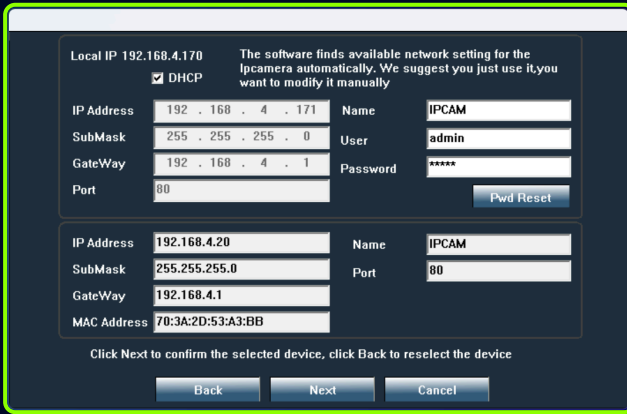


- Tap the **SD CARD ICON** on the intended camera
- Tap on any recording footage
- You can choose to **PLAY** or **DOWNLOAD** footages and images.
- You can also select **TIME PLAYBACK** to filter the recording file easily by date.

DOWNLOAD SEARCH TOOL FROM: <https://domar.com/pages/cctv-tech-support>



- Tap **REFRESH** to see all the cameras online.
- Select a camera and double-click to run browser to access that camera.



- Select a camera and click **NEXT** to modify network parameters. Default user name is **admin**, Default password is **admin**

ACCESS CAMERA VIA BROWSER ON WINDOWS



- It is recommended to use a smartphone for configurations.
- PC and browser access should be considered as a backup method.
- You can configure all the parameters of the cameras.
- If you are not using the IE browser, some settings might be missing.

PRESS & HOLD RESET BUTTON FOR 15 SECONDS



- If the reset is successful, you will hear a chime.
- The camera will restore to its factory default settings.
- It is recommended not to reset the cameras after installation, as reconnecting the camera to your router will require you to take the camera off the wall.

zxtech



zxtech

Visit <https://domar.com/support> for help and support.