



CBC-101 Manual

COFFEE COOLER



Exchange and Return: Contact TERRA COFFEE or dealer

Tel : 031.415.6193 / Fax : 031.415.6195

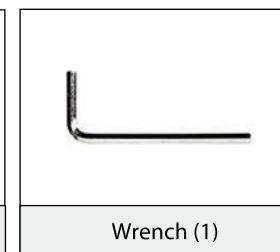
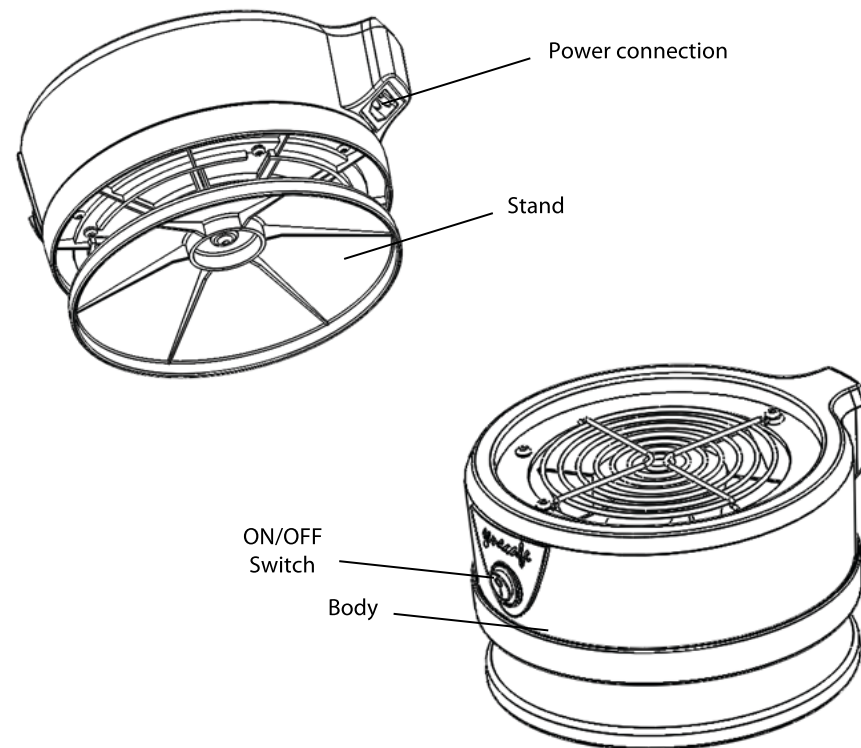
Head office : Ansan Tecom-gil 43 (Sasa-dong) Sangnok-gu, Ansan, Gyeonggi-do
(119-20 Sasa-dong, Sangnok-gu, Ansan, Gyeonggi Province)

 <http://www.genecafe.com>

Table of Contents

1. Product Name and Configuration	2
2. Features	3
3. Cleaning and Maintenance	5
4. How to use	7
5. Inspection items in case of failure	8
6. Product specification	8
7. Warnings and precautions	9

1. Product Name and Configuration



2. Features

1. High performance cooling fan

The powerful cooling fan allows the roasted beans to be cooled quickly.

2. Simple cleaning and maintenance

When using the cooler, chaff do not fly off and is collected on the cooler mesh inside. So it can be easily removed.

3. Cooling Tray

Stainless steel is used for the area making contact with beans, so it is safe and hygienic to use.

4. Refined design

Its stylish design can be utilized as an interior accessory.

5. Simple Operation

The simple on/off switch makes it easy for anyone to use.

6. Silent operation

The quiet motor makes less noise, making it more comfortable to use.

7. Compact size

It is convenient and practical to store after using it as it does not take up much space for its small size.

8. Quick cooling

Its fast cooling function rapidly stops the hot beans from continue to roast once beans have attained your desired roast profile

Role of Cooler

The final cooling sequence after roasting is a very important step. No matter how much it discharges at the proper point after roasting, if the beans are not cooled down to room temperature quickly, the roasting may proceed further due to the radiant heat between the beans and the heat of the atmosphere. The coffee cooler is an important product which cools beans to room temperature quickly and insures to have stable results roast after roast.

3. Cleaning and Maintenance

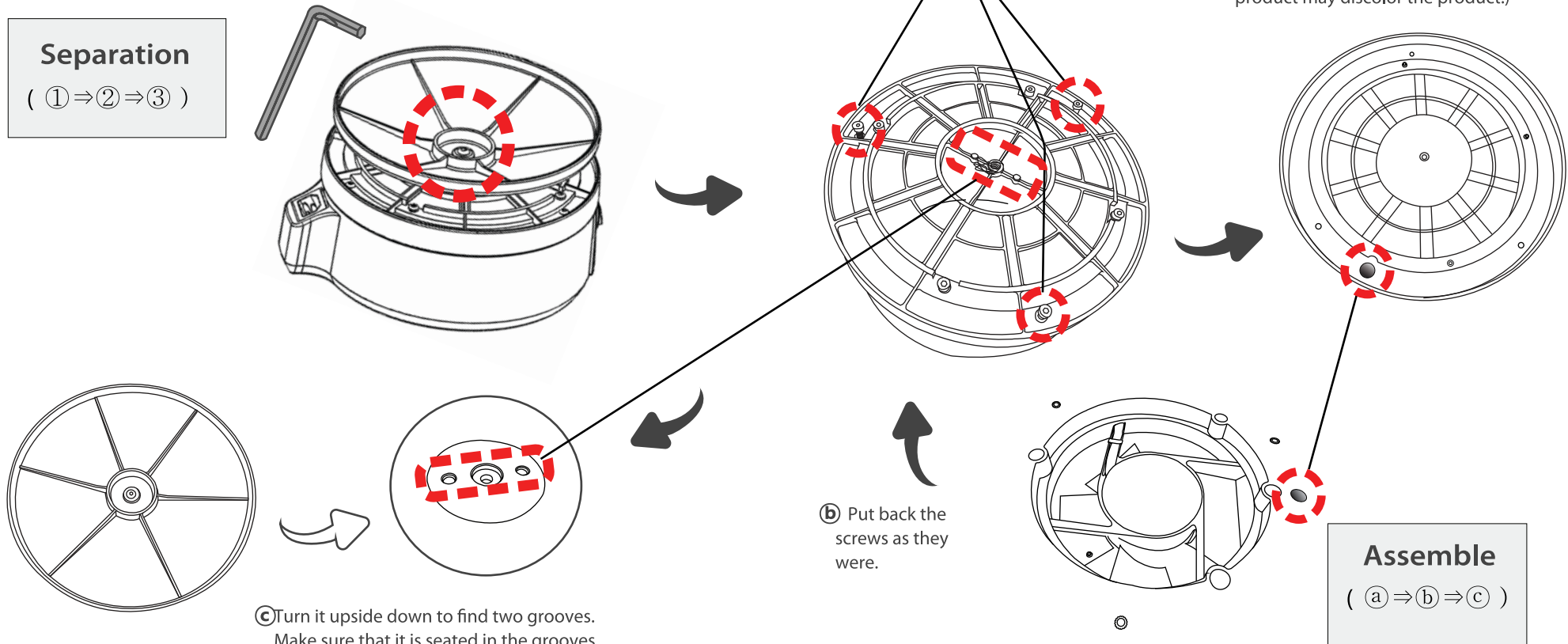
- ① Unplug the power cable before cleaning.
Place the product upside down on a cloth.
Use a hexagon wrench to remove the screw in the middle.

- ② Remove the three screws on the outer line with a hexagon wrench.

- ③ After removing the screws, turn it over and wipe it with a dry cloth or rag to clean shells and dust off.
(Putting chemical or water on the product may discolor the product.)

Separation

(① ⇒ ② ⇒ ③)



- ③ Turn it upside down to find two grooves.
Make sure that it is seated in the grooves,
and put the screws back and tighten them
with a hexagon wrench so that it does not
get loose. (At this stage, be careful not to
put too much force.)

- ⑤ Put back the
screws as they
were.

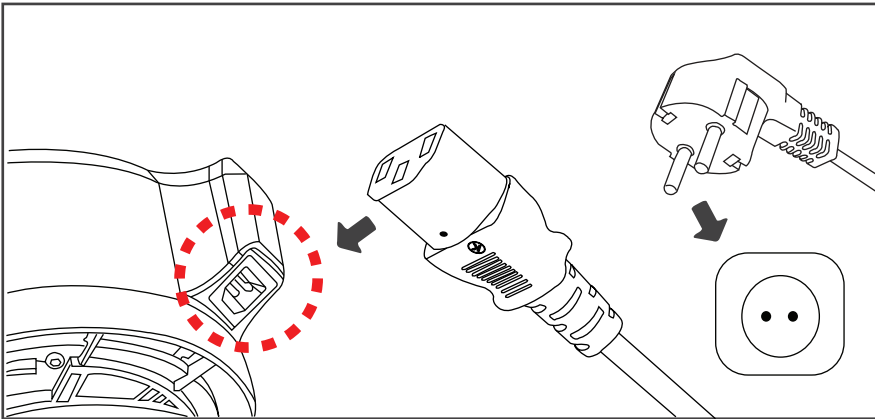
- ④ Place the product so that it fits
in the groove of the semi-circular
protrusion.

Assemble

(④ ⇒ ⑤ ⇒ ⑥)

[It is advised to clean the product after using it 10 times.]

4. How to use



1. Connect the power cable to the main power connection.
2. Please plug the cord into the outlet.



3. Put the roasted coffee in the cooling tray and turn the main switch on.

5. Troubleshooting

- ① Are the cooler and power cables properly plugged in?
- ② Is it connected to an AC 120V outlet?
- ③ Turn on the power switch?

6. Product specification

Product	Coffee Cooler
Model Name	CBC-101
Specification	AC 120V 60H 53W
Product Size	W 217 x D 250 x H 135 mm
Power Cord	1.5 m / 10 A
Product Weight	2 kg

7. Warnings and precautions



WARNING

- ① Do not use anything other than roast coffee beans.
- ② Don't wash the product in water.
- ③ Do not connect the power cable with wet hands. .
- ④ Do not put a heavy object on the power cable.
- ⑤ Do not put water or a small object in a cooler.
- ⑥ Do not use the product for any other purpose. Do not modify or disassemble the product.
- ⑦ If the power cable is damaged, replace it with a special cord purchased from the manufacturer or the importer. Do not try to repair it yourself. Repair should be done by a qualified technician. If inspection, repair or adjustment is required, please send the product to the place of purchase.
- ⑧ Do not plug the power cable in a loose power outlet.
- ⑨ Do not use the product when it is broken.



PRECAUTIONS

- ① Do not pull on the power cable.
- ② Do not drop or impact the product.
- ③ For children over 8 years of age, they should use this product only after receiving warnings about safe use of the product or under the supervision of others. They should be fully aware of dangerous situations while using the product. Do not let children play with this product.
- ④ For persons with poor physical or cognitive abilities, they may use the product only after receiving warning about safe use of the product or under the supervision of others.
- ⑤ When cleaning the product, make sure to unplug the power cable.
- ⑥ Do not place the product near direct sunlight or products with high heat.
- ⑦ When not using the product for a long time, unplug the power cable.
- ⑧ Please plug it into a properly wired outlet.
- ⑨ When the product is working, do not insert a sharp pin or tools.