

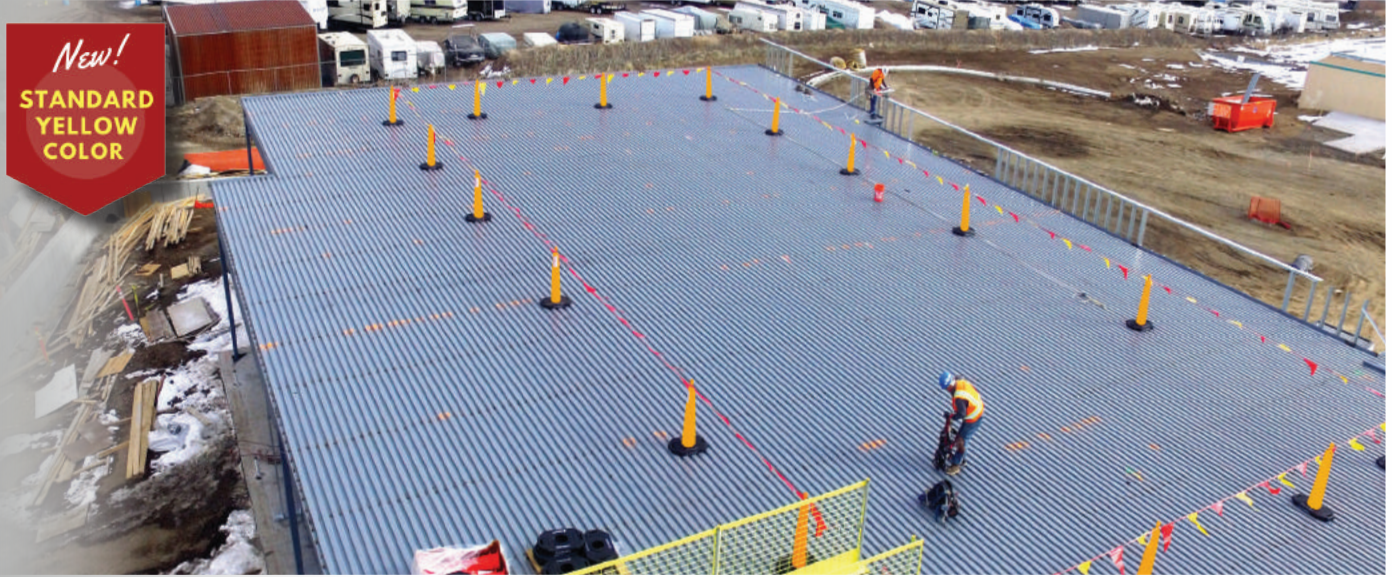
**TraFFix
Devices Inc.**



**ROOF EDGE
DELINEATOR™**

Engineered Products for Safer Highways

New!
**STANDARD
YELLOW
COLOR**



ROOF EDGE DELINEATOR CONE FOR ROOF WARNING LINE SYSTEMS

DESIGNED TO MEET OSHA 1926.502
(39" OSHA Maximum Tie-Off Height)

- Warning line system providing quick set-up and removal.
- 30 lb. Recycled Rubber Base weight stays in place. Won't damage the roof.
- Durable Low Density Plastic Delineator Cones stack with or without base.
- Base drops over cone for easy set-up, bases stack for easy transport & storage.
- Meets OSHA Regulation 16 lb. pull test.
- Available with or without Reflective Sheeting.
- Another high quality product from TraFFix Devices, Inc.



OSHA1926.502 Compliance
47039-CRU-Y-30
Complete Unit, Cone & Base

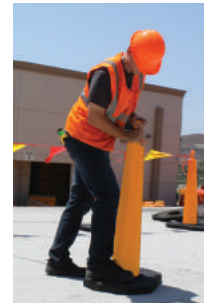
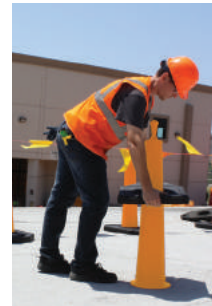
47100-PFLAG-105
Flag Line, 105', Red & Yellow

OSHA1926.502 Compliance
2 Complete Units with Flag line

www.traffixdevices.com

PRODUCT BULLETIN

ROOF EDGE DELINEATOR™



Drop over base for easy set-up

Roof Edge Delineator™

OSHA Regulations

Standard #:1926.502(f) Warning Line Systems

1926.502(f)(2)

Warning lines shall consist of ropes, wires, or chains, and supporting stanchions erected as follows:

OSHA Recommendation: A warning line is used 6-15 feet from the edge of the roof, dependaing on the slope. The warning line meets or exceeds the requirements in 1926.502(f)(2).

1926.502(f)(2)(i)

The rope, wire, or chain shall be flagged at not more than 6-foot (1.8 m) intervals with high-visibility material;

Manufacturers Recommendation: Spacing between the roof edge delineators to be 6' - 10'.

1926.502(f)(2)(ii)

The rope, wire, or chain shall be rigged and supported in such a way that its lowest point (including sag) is no less than 34 inches (.9 m) from the walking/working surface and its highest point is no more than 39 inches (1.0 m) from the walking/working surface;

1926.502(f)(2)(iii)

After being erected, with the rope, wire, or chain attached, stanchions shall be capable of resisting, without tipping over, a force of at least 16 pounds (71 N) applied horizontally against the stanchion, 30 inches (.8 m) above the walking/working surface, perpendicular to the warning line, and in the direction of the floor, roof, or platform edge;

1926.502(f)(2)(iv)

The rope, wire, or chain shall have a minimum tensile strength of 500 pounds (2.22 kN), and after being attached to the stanchions, shall be capable of supporting, without breaking, the loads applied to the stanchions as prescribed in paragraph (f)(2)(iii) of this section; and

1926.502(f)(2)(v)

The line shall be attached at each stanchion in such a way that pulling on one section of the line between stanchions will not result in slack being taken up in adjacent sections before the stanchion tips over.

1926.502(f)(3)

No employee shall be allowed in the area between a roof edge and a warning line unless the employee is performing roofing work in that area.

1926.502(f)(4)

Mechanical equipment on roofs shall be used or stored only in areas where employees are protected by a warning line system, guardrail system, or personal fall arrest system.



Distributed by:

160 Avenida La Pata, San Clemente, CA 92673

(949) 361-5663 FAX (949) 361-9205

www.traffixdevices.com