

TRACKS FOR FALL PROTECTION

High Performance, Low Maintenance

Rigid Lifelines® tracks are self-cleaning, so trolleys continuously roll with minimal resistance. The enclosed track self-centers the trolleys, which protects trolley wheels and ensures their accurate alignment. Plus, our rigid track design saves up to three feet of headroom because—unlike wire rope systems—there is no need for a “sag allowance.”

Plain Track: PT Series

- Our lowest profile design keeps installation space requirements to a minimum
- Track can be custom-curved for specific paths

Trussed Track: R Series

- Trussed design spans greater distance between supports
- Combination of high-strength to low-weight ratio reduces stress on structures

Dual Trussed Track: DST Series

- All the advantages of the trussed design, but dual tracks allow two or more users to pass each other in the same work area

Triple Trussed Track: TST Series

- All the advantages of the trussed design, but three workers can be connected and pass one another within the protected workspace.

Quad Trussed Track: QST Series

- All the advantages of the trussed design, but four workers can be connected and pass one another within the protected workspace.

Alu-Track® Series

- Extruded from high-strength 6061-T6 aluminum alloy
- Virtually maintenance-free aluminum is suitable for clean rooms, refrigeration areas, and other controlled environments

Plain Track
PT Series

PT Series and R Series are available in stainless steel for 500-Series track.

Trussed Track
R Series

Dual Trussed Track
DST Series

Triple Trussed Track
TST Series

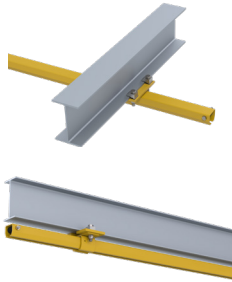
Quad Trussed Track
QST Series

Alu-Track® Series

Track Hardware

Plain Track Flush Mount

Mount either parallel or perpendicular to ceiling beams.



Sloped Hangers with drop rods accommodate slopes up to 14 degrees. Call for system applicability.

Drop-rod hangers require sway bracing.



Plain Track Drop Rod Hanger Assembly

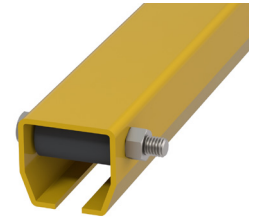
Features support bracket, 12-inch drop rod, and adjustable roof beam clamp. Sway bracing is required.

Drop-rod hangers require sway bracing.



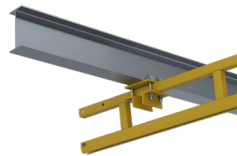
End Stop Bumper

is standard on all systems. Bumper is through-bolted to track ends; resilient rubber increases impact resistance.



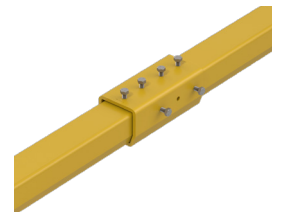
Trussed Track Flush-Cross Mount

Customers can hang a truss track perpendicular to their existing structural beam.



Plain Track Splice

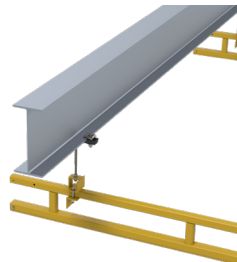
Precisely align and connect track sections using two vertical and four horizontal adjustment screws (provided).



Trussed Track Drop Rod Hanger Assembly

Features support bracket, 12-inch drop rod, and adjustable roof beam clamp. Sway bracing is required.

Drop-rod hangers require sway bracing.



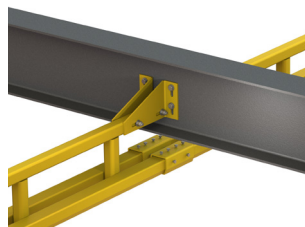
Trussed Track Splice

This two-piece splice features the same splice as above. The second piece is a plate for truss. Hardware is provided.



Low Headroom Truss Hanger Assembly

In some applications, the truss can be mounted through the web, which saves headroom. This hanger type is also referred to as a through-web hanger.



Track Options

- Alu-Track®
- Steel track: rolled from ASTM A572, A607, or A715 grade steel; available with enamel, ArmorPox, Macropoxy, or galvanized coatings
- Stainless steel track: 304 stainless for 500-Series track
- Mylar™ lip seal: for additional track protection from very heavy dust or paint overspray applications

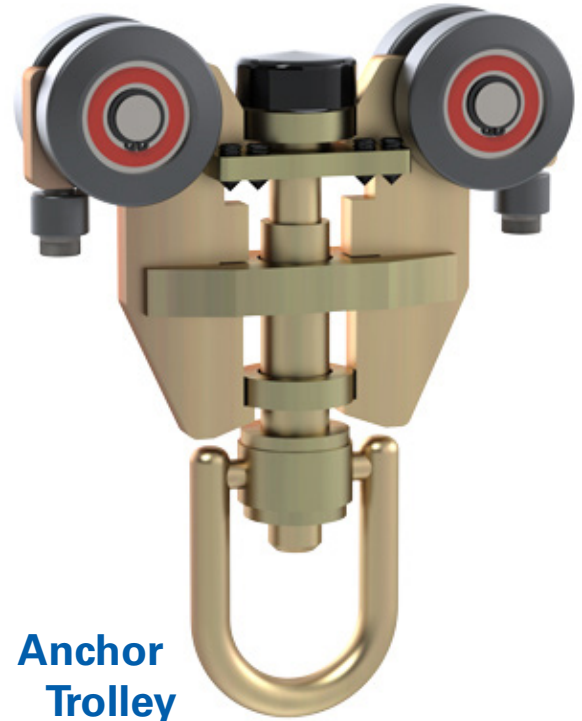
ANCHOR TROLLEY

Minimizing Track Drift

The **Anchor Trolley™** is our ultimate innovation in rolling trolley technology. The Anchor Trolley is designed with cone teeth made of hardened alloy steel that act as a braking mechanism and engage the steel track in the event of a fall. The engagement of the trolley teeth and track causes the trolley to anchor into place without damaging the track, virtually eliminating post-fall drift on the track. The Anchor Trolley greatly increases the opportunity for conscious and able-bodied workers to perform a self-rescue after a fall event. Like our other trolleys, the Anchor Trolley is made from non-consumable materials while being weather-proof and temperature-proof. This design ensures that you still have the same smooth movement that has come to be associated with Rigid Lifelines® enclosed track fall arrest trolleys.

Features

- Reduces drifting on the track after a fall event
- Increases the chances for self-rescue
- Comes standard with Anchor Track Systems from Rigid Lifelines



**Anchor
Trolley**

Greatly Reduces Risk of Suspension Trauma

In the event of a fall...

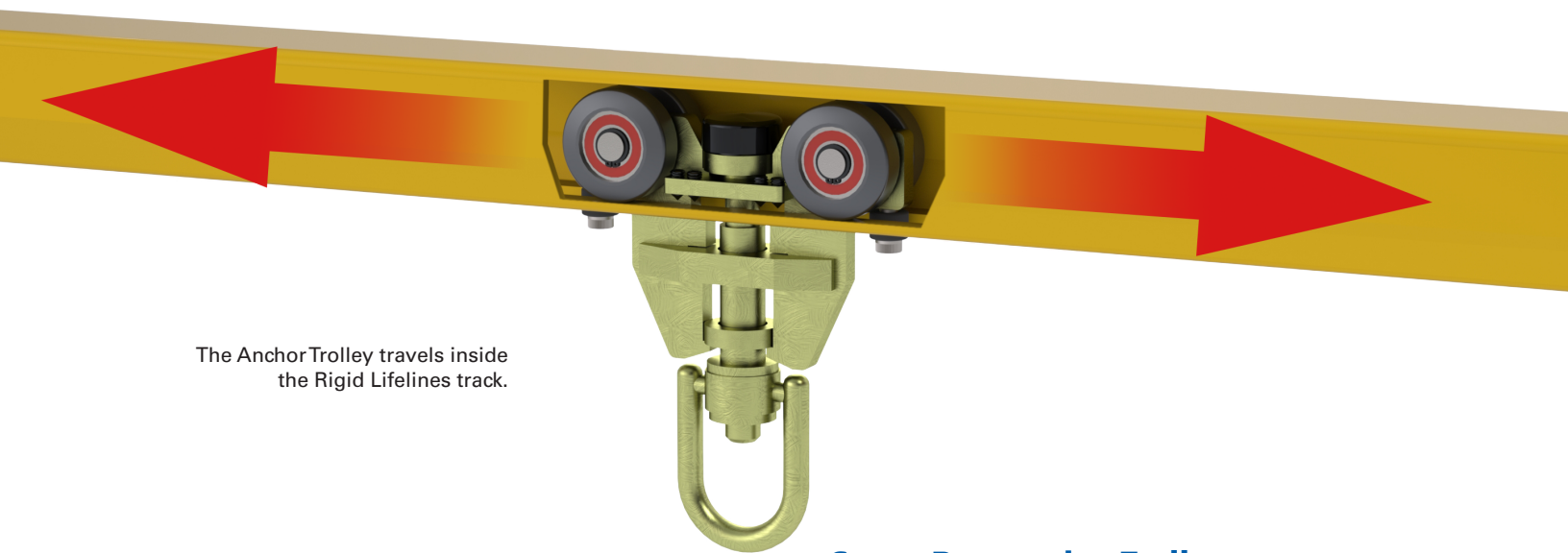


...the Anchor Trolley increases the chances for self-rescue.



Without the Anchor Trolley, chances for self-rescue diminish.





The Anchor Trolley travels inside the Rigid Lifelines track.

Super Responsive Trolleys

For fall arrest systems, how the trolley rolls is the difference between user frustration and enthusiastic user acceptance. Our multi-prong approach to minimum rolling resistance is:

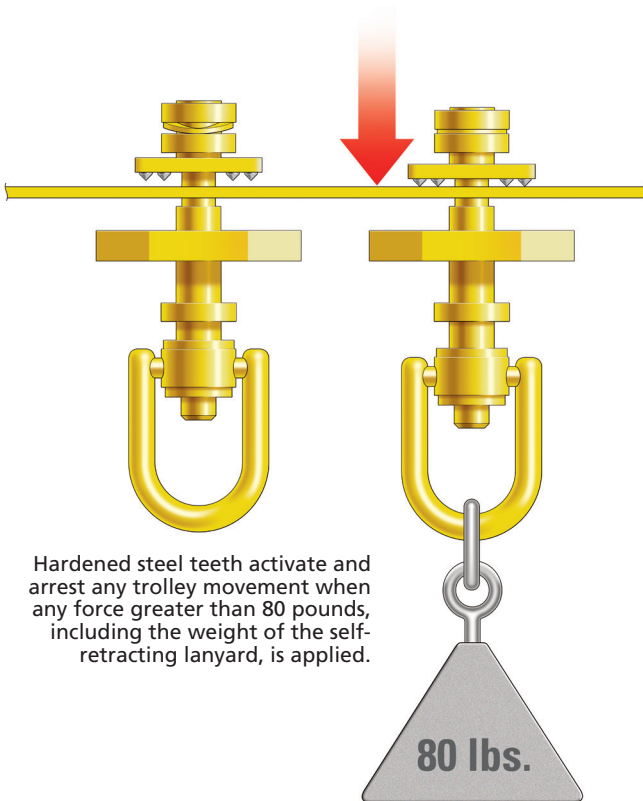
- Enclosed tracks: protecting trolley wheels and their alignment
- Self-cleaning tracks
- Sealed bearings for trolley wheels

Rigid Lifelines' trolleys readily and effortlessly follow their user. They're also super responsive. After the user stops moving, the self-retracting lanyard brings the trolley as close as possible to the worker.

Swiveling Connector Eliminates Side-Loading Stress

On many of our Anchor Track Systems, users are free to travel up to 30 degrees off-plumb of the track. On competing systems, that sort of travel would cause side-loading stress to the trolley's swiveling connector.

By comparison, the swiveling connector on our Anchor Trolley rotates 360 degrees—preventing the lanyard's strap from getting twisted. And the swiveling connector also swivels 180 degrees off-plumb to minimize side-loading stresses. These swiveling and pivoting actions are virtually imperceptible to the user. Together, they provide maximum freedom of movement and minimal equipment wear.



Hardened steel teeth activate and arrest any trolley movement when any force greater than 80 pounds, including the weight of the self-retracting lanyard, is applied.

80 lbs.

CEILING-MOUNTED MONORAIL

Fall Protection without Loss of Floor Space

Rigid Lifelines® Ceiling-Mounted Monorail

Anchor Track System easily mounts to existing structures and can support long runs and curves.

Users travel the track's fixed path, but with the ability to move up to 30 degrees off-plumb—all while benefiting from rigid track protection (minimal fall distance). This system is widely used for protected worker mobility for vehicle loading/unloading, industrial cleaning, and maintenance tasks.

Our monorail system can be readily installed in buildings with very tall ceilings. It's available:

- As hanger kits only, or
- As a complete system kits, or
- As a custom-engineered system to meet your specific needs



Application Options

- Single, dual, or multiple tracks for use by one, two, or multiple workers
- Tracks can be mounted to a sloped beam up to 14 degrees using sloped hangers with drop rods
- Many hanger options including flush mount, bar joist, and wood joist connections
- 2-way or 3-way switches allow multiple users to move in different directions on the same track
- Stainless steel track available
- Curved track

Design

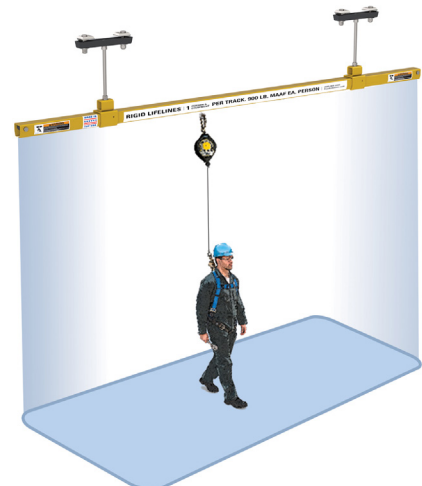
Track(s) attaches to existing structures

Support Structures

Tracks are mounted either:

- Flush-cross mounted to ceiling beams, or
- Flush-parallel mounted to the ceiling beams, or
- Mounted with any length drop rods (requires sway bracing), including hangers for slopes up to 14 degrees

Coverage Area



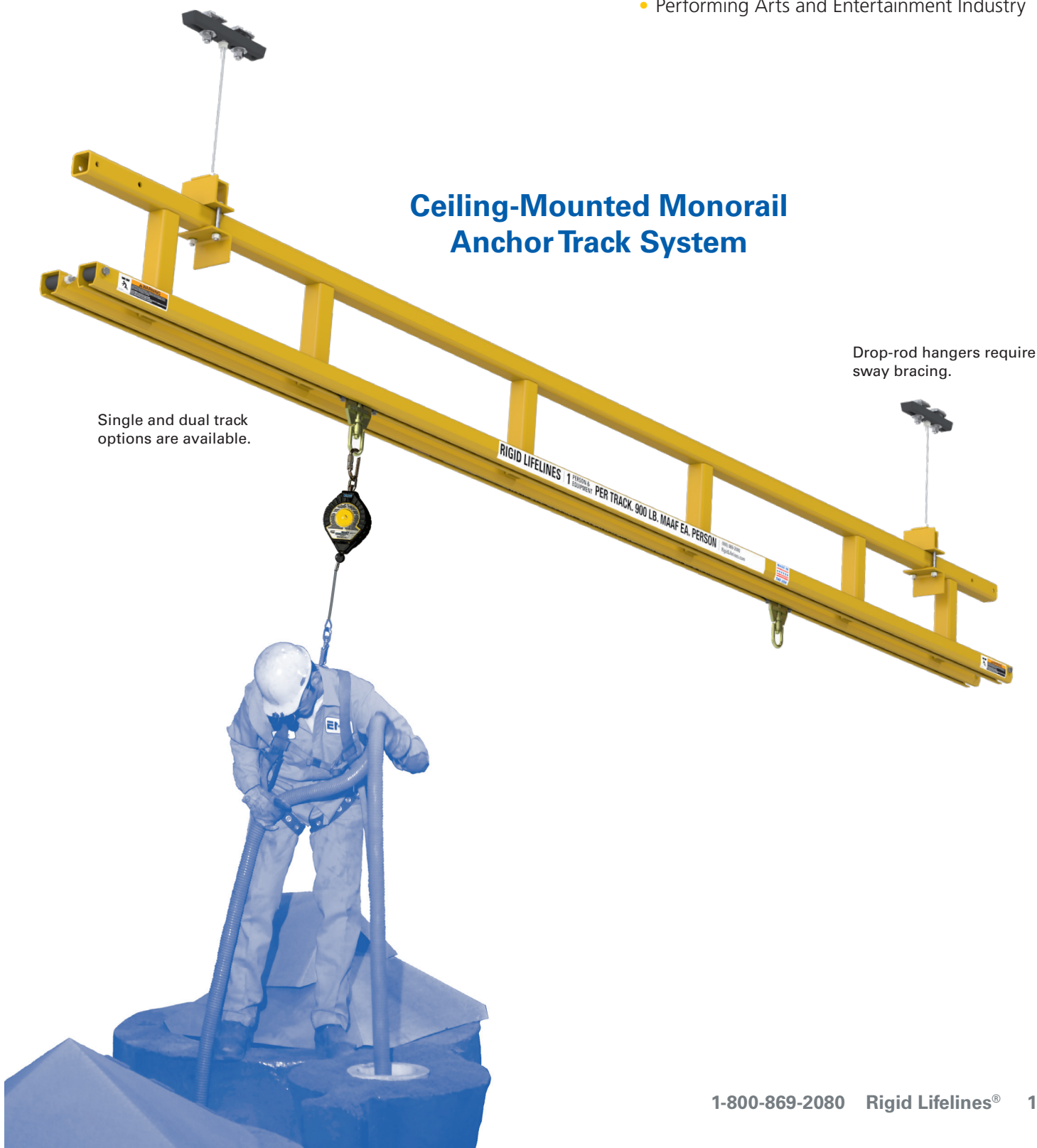
Advantages

- Requires no floor space for support columns
- Easy installation, even in large buildings with tall ceilings
- Layout flexibility, including curves, slopes, switches, multiple tracks, etc.
- Ideal for repeated travel along fixed pathways

Examples

- Truck, Rail, Air, and Transit Facilities
- Petroleum and Coal Processing Plants
- Chemical, Plastics, and Rubber Processing Facilities
- Pulp and Paper Manufacturing
- Machinery Manufacturing
- Warehousing and Storage Facilities
- Performing Arts and Entertainment Industry

Ceiling-Mounted Monorail Anchor Track System



Single and dual track options are available.

Drop-rod hangers require sway bracing.