

FRAME MATERIAL: STEEL  
 WHEELS: SOLID RUBBER  
 BRAKE: NO  
 LOAD CAPACITY: 1,000 LBS.  
 WEIGHT: 73 LBS.  
 WIDTH: 25"  
 DEPTH: 20"  
 HEIGHT: 58.9"  
 LOCKING CHIME HOOK "L" AS SUFFIX  
 FIBER CHIME HOOK "F" AS SUFFIX  
 CABLE CHIME HOOK "C" AS SUFFIX  
 PLASTIC CHIME HOOK "P" AS SUFFIX

**PROPRIETARY AND CONFIDENTIAL**

THE INFORMATION CONTAINED IN THIS DRAWING IS THE SOLE PROPERTY OF VALLEY CRAFT. ANY REPRODUCTION IN PART OR AS A WHOLE WITHOUT THE WRITTEN PERMISSION OF VALLEY CRAFT IS PROHIBITED.

**UNLESS OTHERWISE SPECIFIED:**

DECIMALS  
 2 PLACES  $\pm 0.01$   
 3 PLACES  $\pm 0.005$   
 ANGLE  $\pm 1^\circ$

**GRIND/SAND SHARP EDGES .015 MAX DOES NOT APPLY TO DRILLED HOLE DIA.**



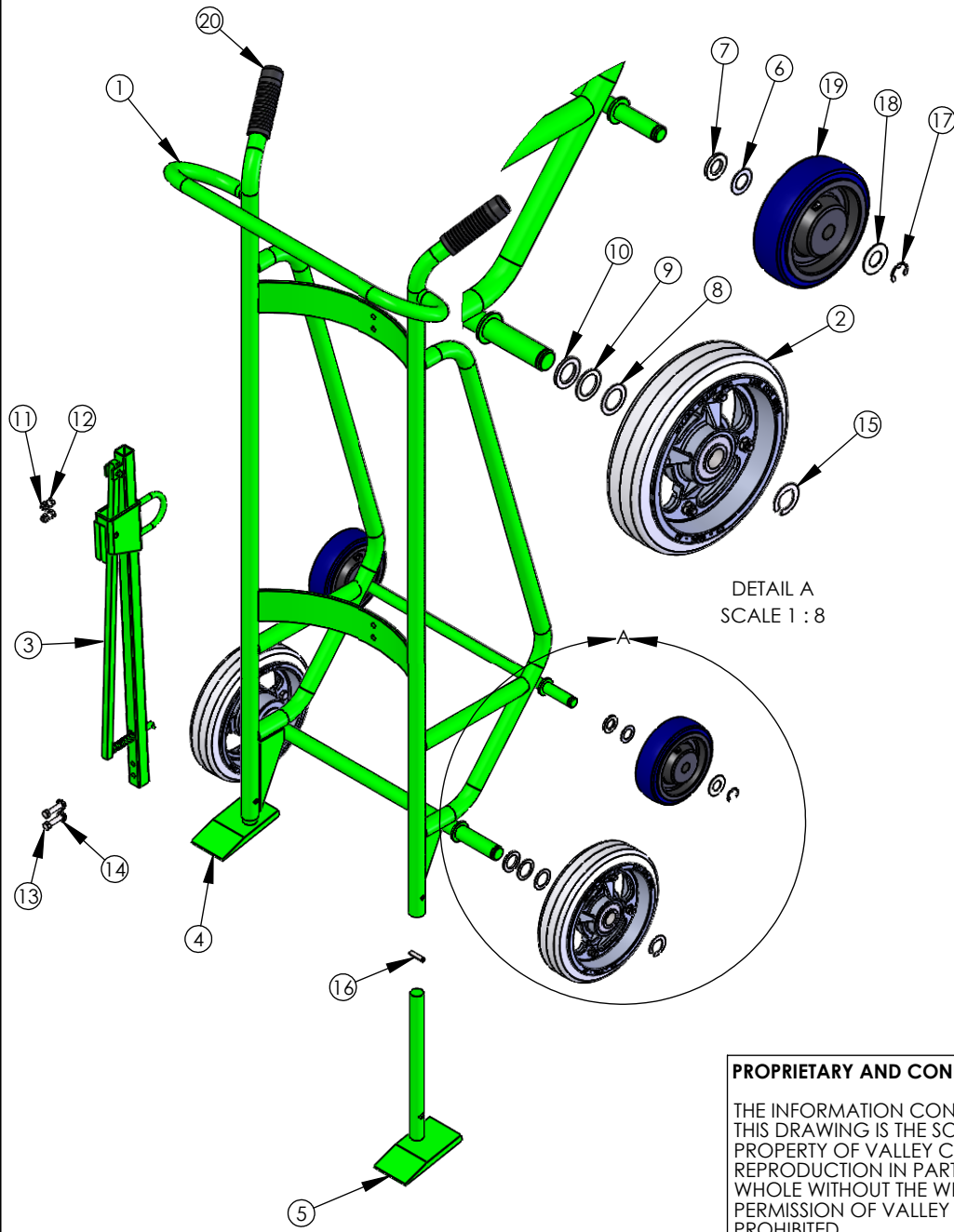
**TITLE:** TRK-DRUM/650SS STD CH

|      |        |                   |    |            |
|------|--------|-------------------|----|------------|
| A    | -      | DRAWN IN SW       | DN | 04/10/2019 |
| CHG. | E.C.O. | DESCRIPTION / WAS | BY | DATE       |

**ALL ANGLES ARE 90° UNLESS SPECIFIED**

|           | NAME | DATE       |
|-----------|------|------------|
| DRAWN     | DN   | 04/10/2019 |
| CHECKED   |      |            |
| ENG APPR. |      |            |

|             |               |                 |          |
|-------------|---------------|-----------------|----------|
| SIZE        | <b>A</b>      | <b>PART NO.</b> | F82895A1 |
|             |               | <b>MATL:</b>    |          |
| SCALE: 1:16 | WEIGHT: 63.89 | SHEET 1 OF 3    |          |



| ITEM NO. | PART NUMBER     | DESCRIPTION  | QTY. |
|----------|-----------------|--|------|
| 1        | F60037A6        | F W/650SS  | 1    |
| 2        | F60004A5        | WHL-10 D/M   | 2    |
| 3        | F60039B2/R60039 | CHIME HOOK ASSY - STEEL --CS, use R60039 for RPMTS | 1    |
| 3        | F60946A6        | CH ASSY-S/ CABLE                                   | 1    |
| 3        | F60949A3        | CH ASSY-S/ FIBER                                   | 1    |
| 3        | F60947A5        | CH ASSY-A/ LOCKING                                 | 1    |
| 3        | F60945A7        | CH ASSY-S/ PLASTIC                                 | 1    |
| 4        | F60044A7/R70044 | SHOE WLDMT-RH S/600 -- CS, use R70044 for RPMTS    | 1    |
| 5        | F60045A6/R70045 | SHOE WLDMT-LH S/600 -- CS, use R70045 for RPMTS    | 1    |
| 6        | Z10008A0        | BUSH-MACH 6H 3/4x18GAx1-1/4 OD                     | 2    |
| 7        | Z10010A6        | BUSH-MACH 3/4x10GAx1-1/4 OD                        | 2    |
| 8        | Z10011A5        | BUSH-MACH 1x18GAx1-1/2 OD                          | 2    |
| 9        | Z10012A4        | BUSH-MACH 1x14GAx1-1/2 OD                          | 2    |
| 10       | Z10013A3        | BUSH-MACH 1x10GAx1-1/2 OD                          | 6    |
| 11       | Z10036A6        | NUT-HEX KEPS 5/16-18                               | 4    |
| 12       | Z10122A1        | S-HHC 5/16-18X3/4                                  | 2    |
| 13       | Z10125A8        | S-HHC 5/16-18X1-1/2                                | 2    |
| 14       | Z10200A6        | WASHER-1/4 FLAT USS                                | 2    |
| 15       | Z10223A9        | RING-RTNG 1  | 2    |
| 16       | Z10234A6        | PIN-SPG 5/16X1-1/4                                 | 2    |
| 17       | Z10236A4        | RING-RTNG 3/4 5304                                 | 2    |
| 18       | Z10491A6        | BUSH-MACH 3/4x18GAx1-1/2 OD                        | 4    |
| 19       | Z30135A4        | WHL-6 x 2 U/P 3/4                                  | 2    |
| 20       | Z50007A7        | GRIP-HDL 1-1/8" BLK                                | 2    |

**PROPRIETARY AND CONFIDENTIAL**  
 THE INFORMATION CONTAINED IN THIS DRAWING IS THE SOLE PROPERTY OF VALLEY CRAFT. ANY REPRODUCTION IN PART OR AS A WHOLE WITHOUT THE WRITTEN PERMISSION OF VALLEY CRAFT IS PROHIBITED.

**UNLESS OTHERWISE SPECIFIED:**  
 DECIMALS  
 2 PLACES ±0.01  
 3 PLACES ±0.005  
 ANGLE ±1°  
 GRIND/SAND SHARP EDGES .015 MAX DOES NOT APPLY TO DRILLED HOLE DIA.



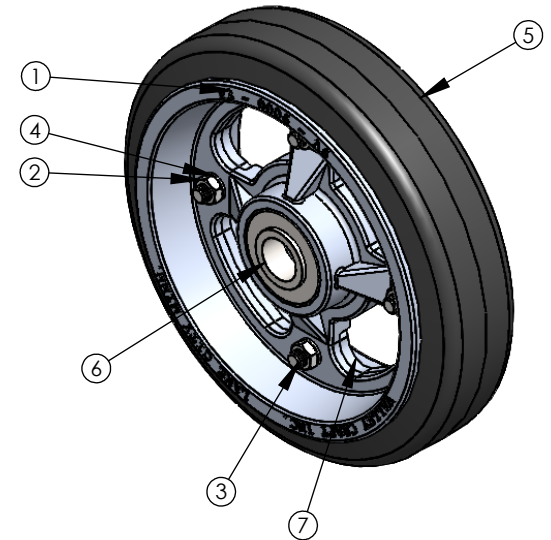
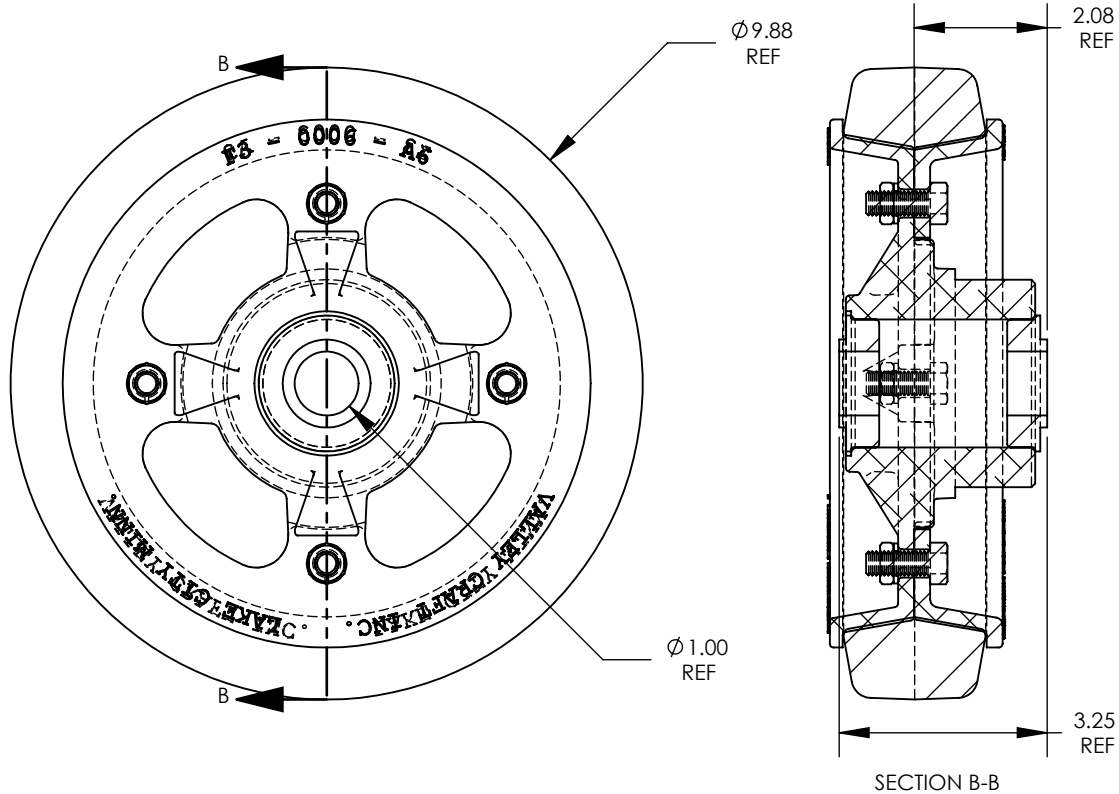
**TITLE:** TRK-DRUM/650SS STD CH

|      |        |                   |    |            |
|------|--------|-------------------|----|------------|
| A    | -      | DRAWN IN SW       | DN | 04/10/2019 |
| CHG. | E.C.O. | DESCRIPTION / WAS | BY | DATE       |

**ALL ANGLES ARE 90° UNLESS SPECIFIED**

|           |      |            |
|-----------|------|------------|
|           | NAME | DATE       |
| DRAWN     | DN   | 04/10/2019 |
| CHECKED   |      |            |
| ENG APPR. |      |            |

|              |                 |
|--------------|-----------------|
| SIZE         | <b>PART NO.</b> |
| A            | F82895A1        |
|              | <b>MATL:</b>    |
| SCALE: 1:24  | WEIGHT: 63.89   |
| SHEET 2 OF 3 |                 |



NOTES:

- $\triangle A$  : 10 X 2-1/2 TIRE SIZE
- $\triangle B$  : SMOOTH TREAD PATTERN
- $\triangle C$  : SOFT RUBBER WHEEL MATERIAL
- $\triangle D$  : 600# LOAD CAPACITY
- $\triangle E$  : 8.5# WEIGHT/WHEEL
- $\triangle F$  : ALUMINUM HUB MATERIAL
- $\triangle G$  : BALL BEARING TYPE
- $\triangle H$  : SILVER HUB COLOR

| ITEM NO. | PART NUMBER | DESCRIPTION                   | QT. Y. |
|----------|-------------|-------------------------------|--------|
| 1        | F30006A6    | HUB-D/M 10X2.5                | 1      |
| 2        | Z10026A8    | NUT-HEX JAM 3/8-16ZP          | 4      |
| 3        | Z10132A9    | S-HHC 3/8-16X1                | 4      |
| 4        | Z10214A0    | WASHER-3/8 LOCK MD            | 4      |
| 5        | Z30001A5    | TIRE-HARD BASE D/M 10 X 2-1/2 | 1      |
| 6        | Z30002A4    | BRG-FLG 1/RPMT                | 2      |
| 7        | Z30003A3    | FLG-D/M 10X.5HD-10F           | 1      |

**PROPRIETARY AND CONFIDENTIAL**

THE INFORMATION CONTAINED IN THIS DRAWING IS THE SOLE PROPERTY OF VALLEY CRAFT. ANY REPRODUCTION IN PART OR AS A WHOLE WITHOUT THE WRITTEN PERMISSION OF VALLEY CRAFT IS PROHIBITED.

**UNLESS OTHERWISE SPECIFIED:**

DECIMALS  
2 PLACES  $\pm 0.01$   
3 PLACES  $\pm 0.005$   
ANGLE  $\pm 1^\circ$

**GRIND/SAND SHARP EDGES .015 MAX DOES NOT APPLY TO DRILLED HOLE DIA.**



**TITLE:** WHL-10 D/M

| NAME      | DATE | SIZE       | PART NO.             |
|-----------|------|------------|----------------------|
| DRAWN JS  |      | A          | F60004A5             |
| CHECKED   |      |            | <b>MATL:</b>         |
| ENG APPR. |      | SCALE: 1:3 | WEIGHT: SHEET 3 OF 3 |

| A    | -      | DRAWN             | JS | 01/29/2009 |
|------|--------|-------------------|----|------------|
| CHG. | E.C.O. | DESCRIPTION / WAS | BY | DATE       |
|      |        |                   |    |            |

**ALL ANGLES ARE 90° UNLESS SPECIFIED**