

FRAME MATERIAL: ALUMINUM  
 WHEELS: PNEUMATIC  
 BRAKE: NO  
 LOAD CAPACITY: 1,000 LBS.  
 WEIGHT: 45 LBS.  
 WIDTH: 25-1/2"  
 DEPTH: 20-3/4"  
 HEIGHT: 58.9"  
 LOCKING CHIME HOOK "L" AS SUFFIX  
 FIBER CHIME HOOK "F" AS SUFFIX  
 CABLE CHIME HOOK "C" AS SUFFIX  
 PLASTIC CHIME HOOK "P" AS SUFFIX

**PROPRIETARY AND CONFIDENTIAL**

THE INFORMATION CONTAINED IN THIS DRAWING IS THE SOLE PROPERTY OF VALLEY CRAFT. ANY REPRODUCTION IN PART OR AS A WHOLE WITHOUT THE WRITTEN PERMISSION OF VALLEY CRAFT IS PROHIBITED.

**UNLESS OTHERWISE SPECIFIED:**

DECIMALS  
 2 PLACES ±0.01  
 3 PLACES ±0.005  
 ANGLE ±1°

**GRIND/SAND SHARP EDGES .015 MAX DOES NOT APPLY TO DRILLED HOLE DIA.**



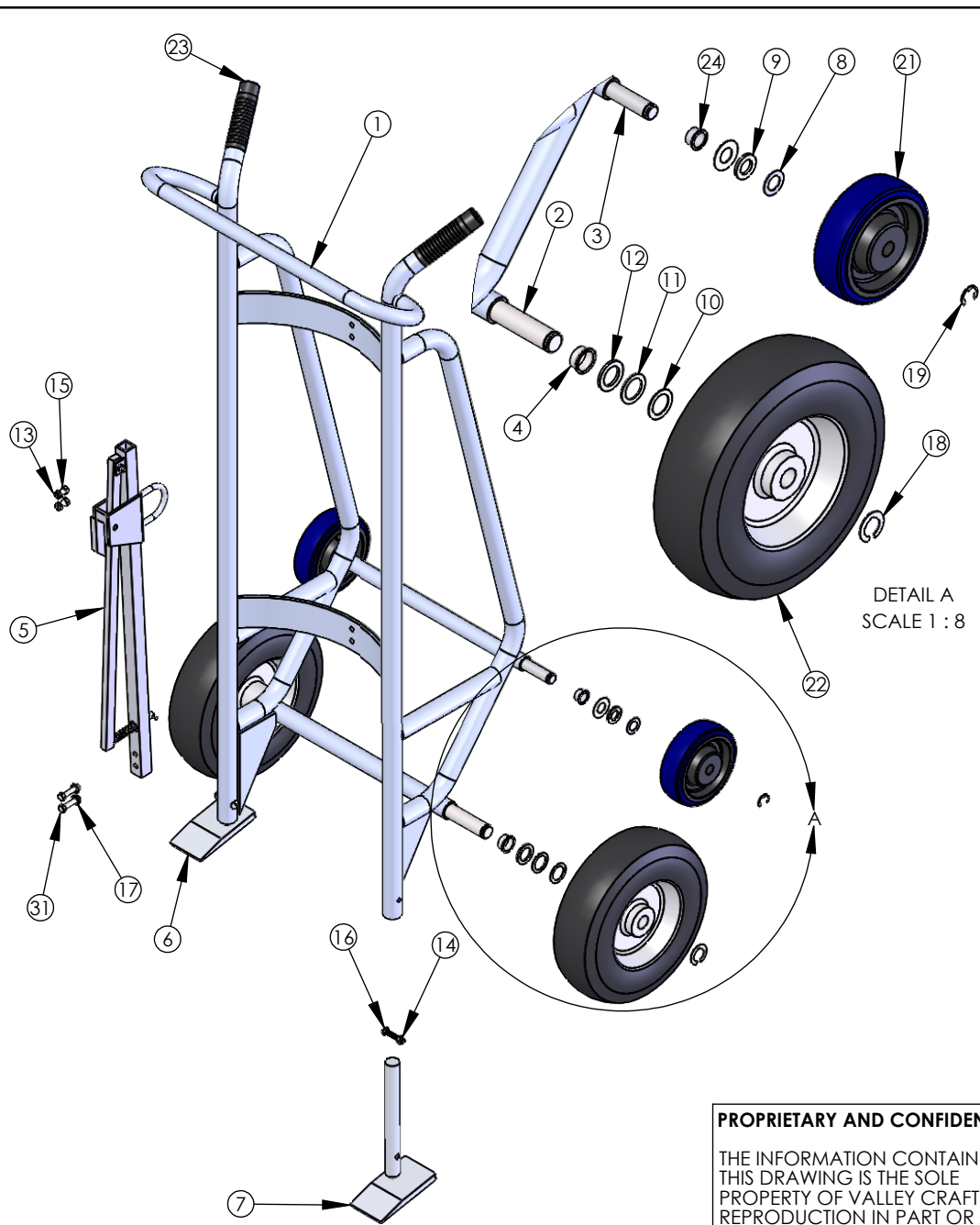
**TITLE:** TRK-DRUM/650AA STD CH

|           | NAME    | DATE |
|-----------|---------|------|
| DRAWN     | salvopb | 5/08 |
| CHECKED   |         |      |
| ENG APPR. |         |      |

| SIZE         | PART NO.                   |
|--------------|----------------------------|
| A            | F82175A2                   |
| <b>MATL:</b> |                            |
| SCALE: 1:24  | WEIGHT: 59.67 SHEET 1 OF 3 |

| CHG. | E.C.O.  | DESCRIPTION / WAS  | BY | DATE       |
|------|---------|--------------------|----|------------|
| C    | E21-037 | ADDED (2) F57261A8 | DN | 04/30/2021 |

**ALL ANGLES ARE 90° UNLESS SPECIFIED**



| ITEM NO. | PART NUMBER     | DESCRIPTION                                      | QTY. |
|----------|-----------------|--|------|
| 1        | F60507A7        | F W/650AA  | 1    |
| 2        | F30041A3        | AXLE-FRT/650A                                    | 1    |
| 3        | F30173B1        | AXLE-REAR/650A                                   | 1    |
| 4        | F57260A9        | BRG-STL FLG 1.01X1.05X.5                         | 2    |
| 5        | F60063B1/R60063 | C H ASSY-A/STD -- CS, use R60063 for RPMTS       | 1    |
| 5        | F62771A2        | CH ASSY-A/ CABLE                                 | 1    |
| 5        | F60950A9        | CH ASSY-A/ FIBER                                 | 1    |
| 5        | F60947A5        | CH ASSY-S/ LOCKING                               | 1    |
| 5        | F60945A7        | CH ASSY-S/ PLASTIC                               | 1    |
| 6        | F60065A1/R60065 | SHOE WLDMT-RH A/600A -- CS, use R60065 for RPMTS | 1    |
| 7        | F60066A0/R60066 | SHOE WLDMT-LH A/600A -- CS, use R60066 for RPMTS | 1    |
| 8        | Z10008A0        | BUSH-MACH 6H 3/4x18Gax1-1/4 OD                   | 2    |
| 9        | Z10010A6        | BUSH-MACH 3/4x10Gax1-1/4 OD                      | 2    |
| 10       | Z10011A5        | BUSH-MACH 1x18Gax1-1/2 OD                        | 2    |
| 11       | Z10012A4        | BUSH-MACH 1x14Gax1-1/2 OD                        | 2    |
| 12       | Z10013A3        | BUSH-MACH 1x10Gax1-1/2 OD                        | 2    |
| 13       | Z10036A6        | NUT-HEX KEPS 5/16-18                             | 4    |
| 14       | Z10045A5        | NUT-NYL NE 5/16-18                               | 2    |
| 15       | Z10122A1        | S-HHC 5/16-18X3/4                                | 2    |
| 16       | Z10184A6        | S-RHM 5/16-18X1-3/4                              | 2    |
| 17       | Z10200A6        | WASHER-1/4 FLAT USS                              | 2    |
| 18       | Z10223A9        | RING-RTNG 1                                      | 2    |
| 19       | Z10236A4        | RING-RTNG 3/4 5304                               | 2    |
| 20       | Z10491A6        | BUSH-MACH 3/4x18Gax1-1/2 OD                      | 4    |
| 21       | Z30135A4        | WHL-6 x 2 U/P 3/4                                | 2    |
| 22       | Z30681A7        | WHL-12 AIR                                       | 2    |
| 23       | Z50085A2        | GRIP-HDL 1-1/4" BLK                              | 2    |
| 24       | F57261A8        | BRG-STL FLG .760X.825X.5                         | 2    |
| 31       | Z10125A8        | S-HHC 5/16-18X1-1/2                              | 2    |

DETAIL A  
SCALE 1:8

**PROPRIETARY AND CONFIDENTIAL**

THE INFORMATION CONTAINED IN THIS DRAWING IS THE SOLE PROPERTY OF VALLEY CRAFT. ANY REPRODUCTION IN PART OR AS A WHOLE WITHOUT THE WRITTEN PERMISSION OF VALLEY CRAFT IS PROHIBITED.

**UNLESS OTHERWISE SPECIFIED:**

DECIMALS  
2 PLACES ±0.01  
3 PLACES ±0.005  
ANGLE ±1°

**GRIND/SAND SHARP EDGES .015 MAX DOES NOT APPLY TO DRILLED HOLE DIA.**



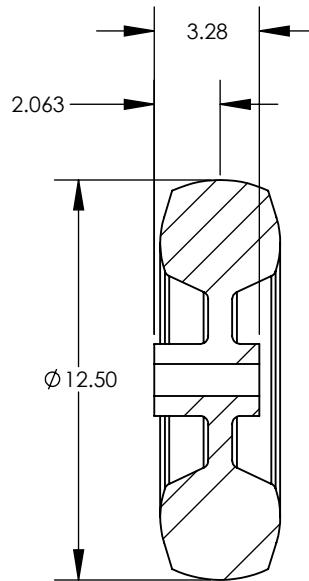
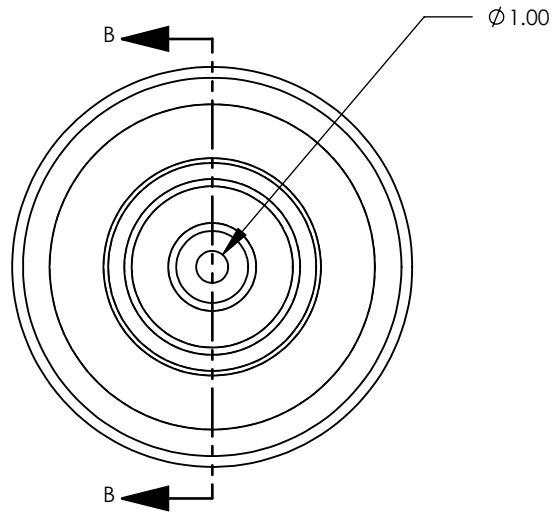
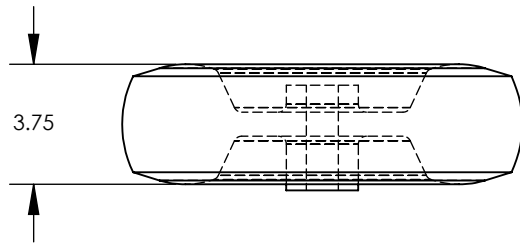
**TITLE:** TRK-DRUM/650AA STD CH

|           | NAME    | DATE |
|-----------|---------|------|
| DRAWN     | salvopb | 5/08 |
| CHECKED   |         |      |
| ENG APPR. |         |      |

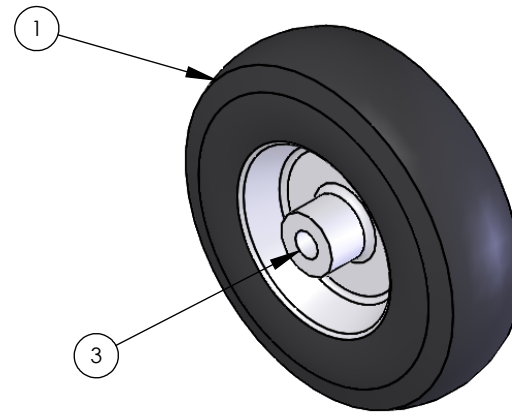
| SIZE         | PART NO.      |
|--------------|---------------|
| A            | F82175A2      |
| <b>MATL:</b> |               |
| SCALE: 1:24  | WEIGHT: 59.67 |
| SHEET 2 OF 3 |               |

| C    | E21-037 | ADDED (2) F57261A8 | DN | 04/30/2021 |
|------|---------|--------------------|----|------------|
| CHG. | E.C.O.  | DESCRIPTION / WAS  | BY | DATE       |
|      |         |                    |    |            |

**ALL ANGLES ARE 90° UNLESS SPECIFIED**



SECTION B-B



- 1. TIRE SIZE: 12 - 1/2 X 3 - 3/4 (4.1/3.5 - 6)
- 2. TREAD PATTERN: SAWTOOTH
- 3. WHEEL MATERIAL: RUBBER
- 4. LOAD CAP./WHEEL: LOAD RANGE "B"
- 5. WEIGHT/WHEEL: 7#
- 6. OVERALL HUB WIDTH: 3.28
- 7. OFFSET CENTER OF WHEEL TO END OF HUB: 2 - 1/16
- 8. HUB MATERIAL: STEEL
- 9. BEARING TYPE: BALL
- 10. BORE OR AXLE SIZE: 1
- 11. HUB COLOR: SILVER
- 12. GREASE ZERK: NO
- 13. VENDOR: HOOSIER #869H34-82

| Item Number | Part Number | Description        | Qty. |
|-------------|-------------|--------------------|------|
| 1           | Z30007A9    | TIRE-AIR 12        | 1    |
| 2           | Z30008A8    | TUBE-AIR 12        | 1    |
| 3           | Z30002A4    | BEARING-FLG 1/RPMT | 2    |

|      |        |                   |     |      |
|------|--------|-------------------|-----|------|
| B    |        | DRAWN FROM CADKEY | PBS | 1/08 |
| CHG. | E.C.O. | DESCRIPTION / WAS | BY  | DATE |

**PROPRIETARY AND CONFIDENTIAL**

THE INFORMATION CONTAINED IN THIS DRAWING IS THE SOLE PROPERTY OF VALLEY CRAFT. ANY REPRODUCTION IN PART OR AS A WHOLE WITHOUT THE WRITTEN PERMISSION OF VALLEY CRAFT IS PROHIBITED.

**ALL ANGLES ARE 90° UNLESS SPECIFIED**

**UNLESS OTHERWISE SPECIFIED:**

DECIMALS  
2 PLACES ±0.01  
3 PLACES ±0.005  
ANGLE ±1°

**GRIND/SAND SHARP EDGES .015 MAX DOES NOT APPLY TO DRILLED HOLE DIA.**

|           | NAME    | DATE |
|-----------|---------|------|
| DRAWN     | salvopb | 1/08 |
| CHECKED   |         |      |
| ENG APPR. |         |      |



2001 South Hwy. 61, Lake City, MN 55041-9555, U.S.A.

**TITLE:** WHL-12 AIR

**SIZE:** **A** **PART NO.:** Z30681A7

**MATL:**

SCALE: 1:6 WEIGHT: 12.53 SHEET 3 OF 3