

FRAME MATERIAL: ALUMINUM  
 WHEELS: SOLID RUBBER  
 BRAKE: YES  
 LOAD CAPACITY: 1,000 LBS.  
 WEIGHT: 55 LBS.  
 WIDTH: 25"  
 DEPTH: 18"  
 HEIGHT: 52"  
 LOCKING CHIME HOOK "L" AS SUFFIX  
 FIBER CHIME HOOK "F" AS SUFFIX  
 CABLE CHIME HOOK "C" AS SUFFIX  
 PLASTIC CHIME HOOK "P" AS SUFFIX

**PROPRIETARY AND CONFIDENTIAL**

THE INFORMATION CONTAINED IN THIS DRAWING IS THE SOLE PROPERTY OF VALLEY CRAFT. ANY REPRODUCTION IN PART OR AS A WHOLE WITHOUT THE WRITTEN PERMISSION OF VALLEY CRAFT IS PROHIBITED.

**UNLESS OTHERWISE SPECIFIED:**

DECIMALS  
 2 PLACES ±0.01  
 3 PLACES ±0.005  
 ANGLE ±1°

**GRIND/SAND SHARP EDGES .015 MAX DOES NOT APPLY TO DRILLED HOLE DIA.**



2001 South Hwy. 61, Lake City, MN 55041-9555, U.S.A.

**TITLE:** TRK-DRUM/625AS

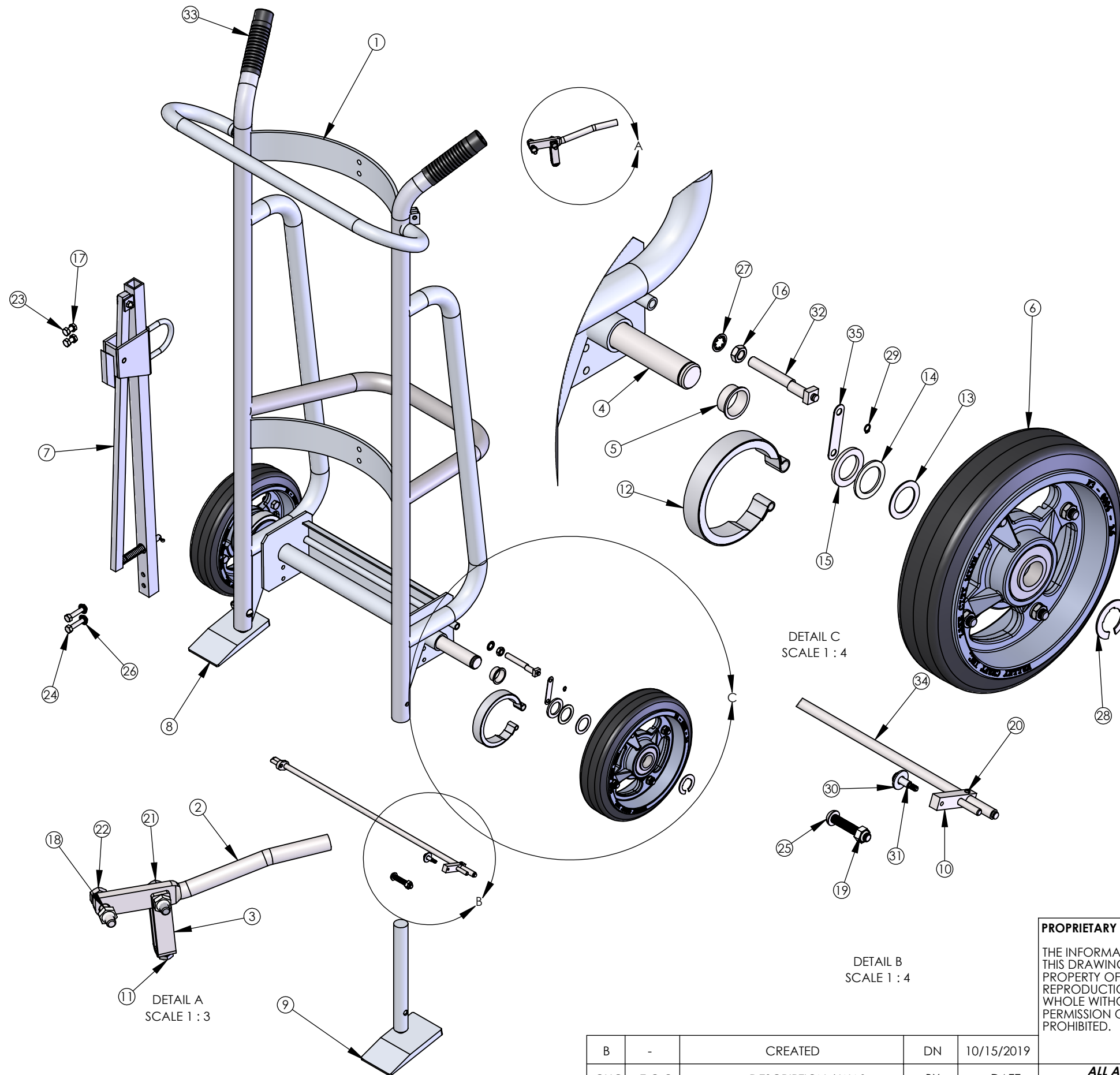
B	-	CREATED	DN	10/15/2019
CHG.	E.C.O.	DESCRIPTION / WAS	BY	DATE

**ALL ANGLES ARE 90° UNLESS SPECIFIED**

	NAME	DATE
DRAWN	DN	10/15/2019
CHECKED		
ENG APPR.		

SIZE	<b>PART NO.</b>
<b>A</b>	F82050A2
	<b>MATL:</b> Material <not specified>
SCALE: 1:16	WEIGHT: 47.96   SHEET 1 OF 3

Not Modeled: F60180A1 - BRAKE CABLE ASSEMBLY Qty. 1



ITEM NO.	PART NUMBER	DESCRIPTION	QTY.
1	F60506A8	F W/625AS	1
2	F30013A7	HDL-BRK/825	1
3	F30014A6	CLEVIS-BRK CABLE	1
4	F30041A3	AXLE-FRT/650A	1
5	F57260A9	BRG-STL FLG 1.01X1.05X.5	2
6	F60004A5	WHL-10 D/M	2
7	F60063B1/R60063	C H ASSY-A/STD -- CS, use R60063 for RPMTS	1
7	F62771A2	CH ASSY-A/ CABLE	1
7	F60950A9	CH ASSY-A/ FIBER	1
7	F60947A5	CH ASSY-S/ LOCKING	1
7	F60945A7	CH ASSY-S/ PLASTIC	1
8	F60065A1/R60065	SHOE WLDMT-RH A/600A -- CS, use R60065 for RPMTS	1
9	F60066A0/R60066	SHOE WLDMT-LH A/600A -- CS, use R60066 for RPMTS	1
10	F68656A4	BRK ROD PIN WLDMT	1
11	Z10041A9	NUT-HEX MACH #10-32	1
12	F62177A2	BRK BAND ASSY	2
13	Z10011A5	BUSH-MACH 1x18GAx1-1/2 OD	2
14	Z10012A4	BUSH-MACH 1x14GAx1-1/2 OD	2
15	Z10013A3	BUSH-MACH 1x10GAx1-1/2 OD	2
16	Z10030A2	NUT-HEX JAM 3/8-24	2
17	Z10036A6	NUT-HEX KEPS 5/16-18	4
18	Z10043A7	NUT-NYL NE 1/4-20	2
19	Z10045A5	NUT-NYL NE 5/16-18	2
20	Z10069A6	PIN-SPG 3/16X5/8	1
21	Z10112A3	S-HHC 1/4-20X1	1
22	Z10113A2	S-HHC 1/4-20X1-1/4	1
23	Z10122A1	S-HHC 5/16-18X3/4	2
24	Z10125A8	S-HHC 5/16-18X1-1/2	2
25	Z10184A6	S-RHM 5/16-18X1-3/4	2
26	Z10200A6	WASHER-1/4 FLAT USS	2
27	Z10209A7	WASHER-3/8 LOCK INT TOOTH	2
28	Z10223A9	RING-RTNG 1	2
29	Z10231A9	RING-RTNG 1/4	4
30	Z10602A2	WASHER-1/4 FLAT SAE	1
31	Z10805A2	BOLT-STRIPPER 1/4X1/2	1
32	Z30012A2	ECC-BRK SHORT	2
33	Z50085A2	GRIP-HDL 1-1/4" BLK	2
34	F68891A9	BRK ROD WLDMT-20.63	1
35	F30012A8	LINK-CONN/825 (STK)	2

DETAIL C  
SCALE 1 : 4

DETAIL B  
SCALE 1 : 4

DETAIL A  
SCALE 1 : 3

**PROPRIETARY AND CONFIDENTIAL**  
THE INFORMATION CONTAINED IN THIS DRAWING IS THE SOLE PROPERTY OF VALLEY CRAFT. ANY REPRODUCTION IN PART OR AS A WHOLE WITHOUT THE WRITTEN PERMISSION OF VALLEY CRAFT IS PROHIBITED.

**UNLESS OTHERWISE SPECIFIED:**  
DECIMALS  
2 PLACES ±0.01  
3 PLACES ±0.005  
ANGLE ±1°  
GRIND/SAND SHARP EDGES .015 MAX  
DOES NOT APPLY TO DRILLED HOLE DIA.

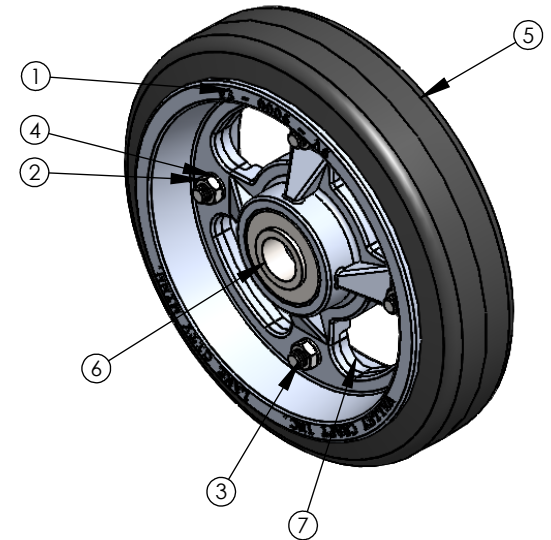
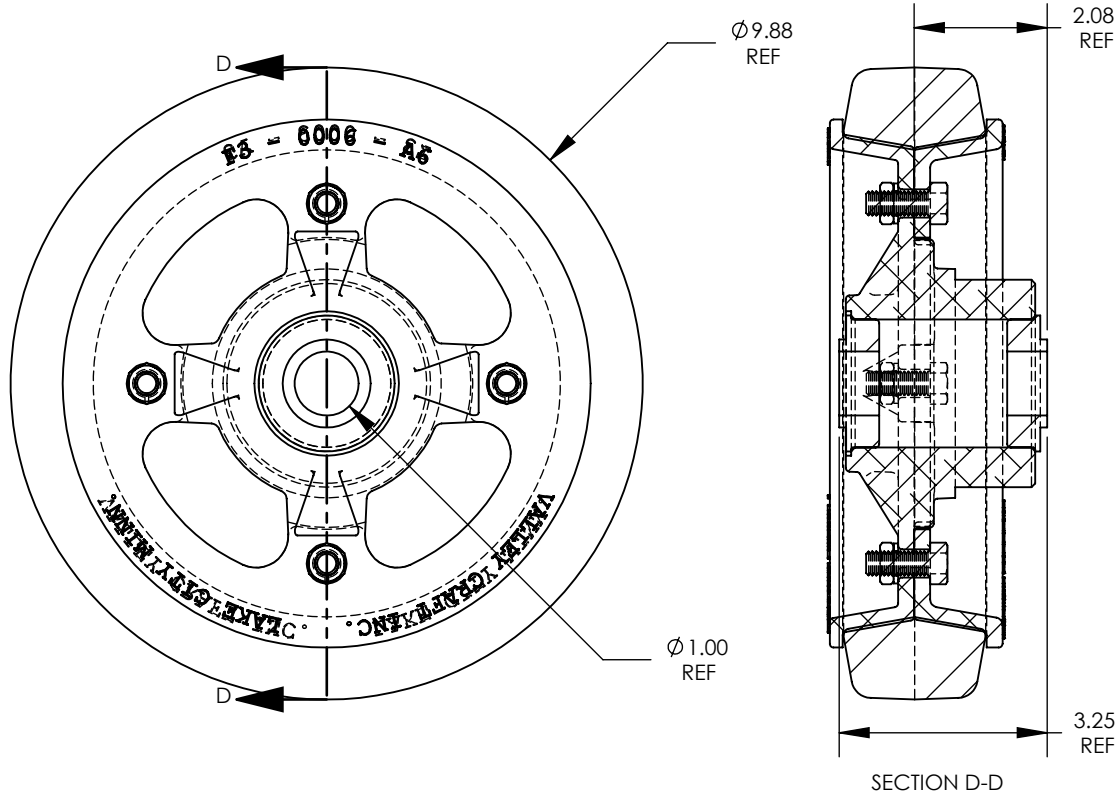


B	-	CREATED	DN	10/15/2019
CHG	E.C.O.	DESCRIPTION / WAS	BY	DATE

**ALL ANGLE ARE 90°  
UNLESS SPECIFIED**

	NAME	DATE
DRAWN	DN	10/15/2019
CHECKED		
ENG APPR.		

TITLE: TRK-DRUM/625AS	
SIZE	PART NO. F82050A2
B	MATL: Material <not specified>
SCALE: 1:12	WEIGHT: 47.96 SHEET 2 OF 3



NOTES:

- △ A : 10 X 2-1/2 TIRE SIZE
- △ B : SMOOTH TREAD PATTERN
- △ C : SOFT RUBBER WHEEL MATERIAL
- △ D : 600# LOAD CAPACITY
- △ E : 8.5# WEIGHT/WHEEL
- △ F : ALUMINUM HUB MATERIAL
- △ G : BALL BEARING TYPE
- △ H : SILVER HUB COLOR

ITEM NO.	PART NUMBER	DESCRIPTION	QTY.
1	F30006A6	HUB-D/M 10X2.5	1
2	Z10026A8	NUT-HEX JAM 3/8-16ZP	4
3	Z10132A9	S-HHC 3/8-16X1	4
4	Z10214A0	WASHER-3/8 LOCK MD	4
5	Z30001A5	TIRE-HARD BASE D/M 10 X 2-1/2	1
6	Z30002A4	BRG-FLG 1/RPMT	2
7	Z30003A3	FLG-D/M 10X.5HD-10F	1

**PROPRIETARY AND CONFIDENTIAL**

THE INFORMATION CONTAINED IN THIS DRAWING IS THE SOLE PROPERTY OF VALLEY CRAFT. ANY REPRODUCTION IN PART OR AS A WHOLE WITHOUT THE WRITTEN PERMISSION OF VALLEY CRAFT IS PROHIBITED.

**UNLESS OTHERWISE SPECIFIED:**

DECIMALS  
2 PLACES ±0.01  
3 PLACES ±0.005  
ANGLE ±1°

**GRIND/SAND SHARP EDGES .015 MAX DOES NOT APPLY TO DRILLED HOLE DIA.**



**TITLE:** WHL-10 D/M

DRAWN	JS	SIZE	A	<b>PART NO.</b>	F60004A5
CHECKED		<b>DATE</b>		<b>MATL:</b>	
ENG APPR.		SCALE: 1:3	WEIGHT:	SHEET 3 OF 3	

A	-	DRAWN	JS	01/29/2009
CHG.	E.C.O.	DESCRIPTION / WAS	BY	DATE

**ALL ANGLES ARE 90° UNLESS SPECIFIED**