

waitstaff

COLLECTION







waitstaff COLLECTION

Quality, comfort and style.
This is what you can expect to
find in our wait staff collection.

Seeking custom options?
No problem!

Our team of experts can work
with you to create your own
personalized look that will fit the
needs of your establishment.



D300

Onyx DRESS SHIRT

5

Onyx Dress Shirt Ls
D300 Men's Long Sleeve (S-3X)
W300 Ladies Long Sleeve (XS-2X)

- 65/35 yarn-dyed poly/cotton
- 3.3 oz. fabric
- Built-in collar stays
- Adjustable cuffs
- Double back yoke
- Left chest pocket
- Available in pinstripe only
- Ladies has a feminine silhouette

W300

Waitstaff Collection

Call 888.267.4444 or visit www.janiforms.com

Chambray DRESS SHIRT



SLMNP

Chambray Shirt

SLMNP Men's Long Sleeve (XS-3X)
SLWCH Ladies Long Sleeve (XS-2X)

- 4 oz. 60/40 cotton/poly
- Anti-wrinkle finish
- Back yoke with boxed pleat
- Roll-up long sleeve with button tab
- Faux horn buttons
- Left sleeve cell phone pocket
- Ladies has a feminine silhouette

Colors: Green Mist, Gray, Ecu, Dusty Rose

Green Mist

Gray

Ecu

Dusty Rose



SLWCH

Ladies Finesse 3/4-Sleeve Fitted Shirt

WA34 Ladies Long Sleeve (XS-2X)

- 3.8 oz. 64/34/2 poly/cotton/elastane
- Fitted design
- Buttoned front
- 3/4 cuffed sleeve
- Front and back darts
- Side slits
- "V" neck line
- Ladies has a feminine silhouette

Colors: Blue, Natural

Stretch Dress Shirt

SLMNP Men's Long Sleeve (XS-3X)

- 3.8 oz. 64/34/2 poly/cotton/elastane
 - Long-sleeve
 - Two-button adjustable cuffs
 - Buttoned gauntlet
- Colors: Blue, Natural

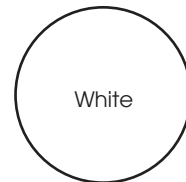
STRETCH DRESS SHIRT



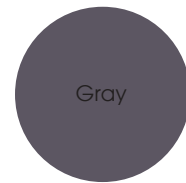
Natural



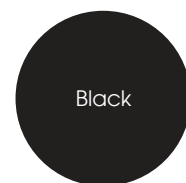
Blue



White



Gray



Black



Two Pocket Shirt

DPDS Men's Long Sleeve (S-2X)
WPDS Ladies Long Sleeve (XS-2X)

- 65/32/3 poly/cotton/elastane
- 3.8 oz. fabric
- Roll-up long-sleeve with 1-button tab
- Double back yoke
- Buttoned front and 2 button cuffs
- Triple-needle stitching
- 2 front pockets with flaps
- Fitted

Colors: Black, Gray and White

Detroit DENIM SHIRT



Detroit Denim Shirt

SKS002 Unisex Short Sleeve (XS-3X)

SKL001 Unisex Long Sleeve (XS-3X)

- 4.4 oz. 100% lightweight cotton denim
- Enzyme wash
- Hybrid style
- Antiqued metal buttons
- Left chest pocket
- Left sleeve thermometer pocket

Colors: Black, Indigo Blue

SKS002
Indigo Blue

SKS002
Black



Detroit STRIPED DENIM SHIRT

Detroit Striped Denim Shirt Ss
SKS003 Unisex Short Sleeve (XS-3X)

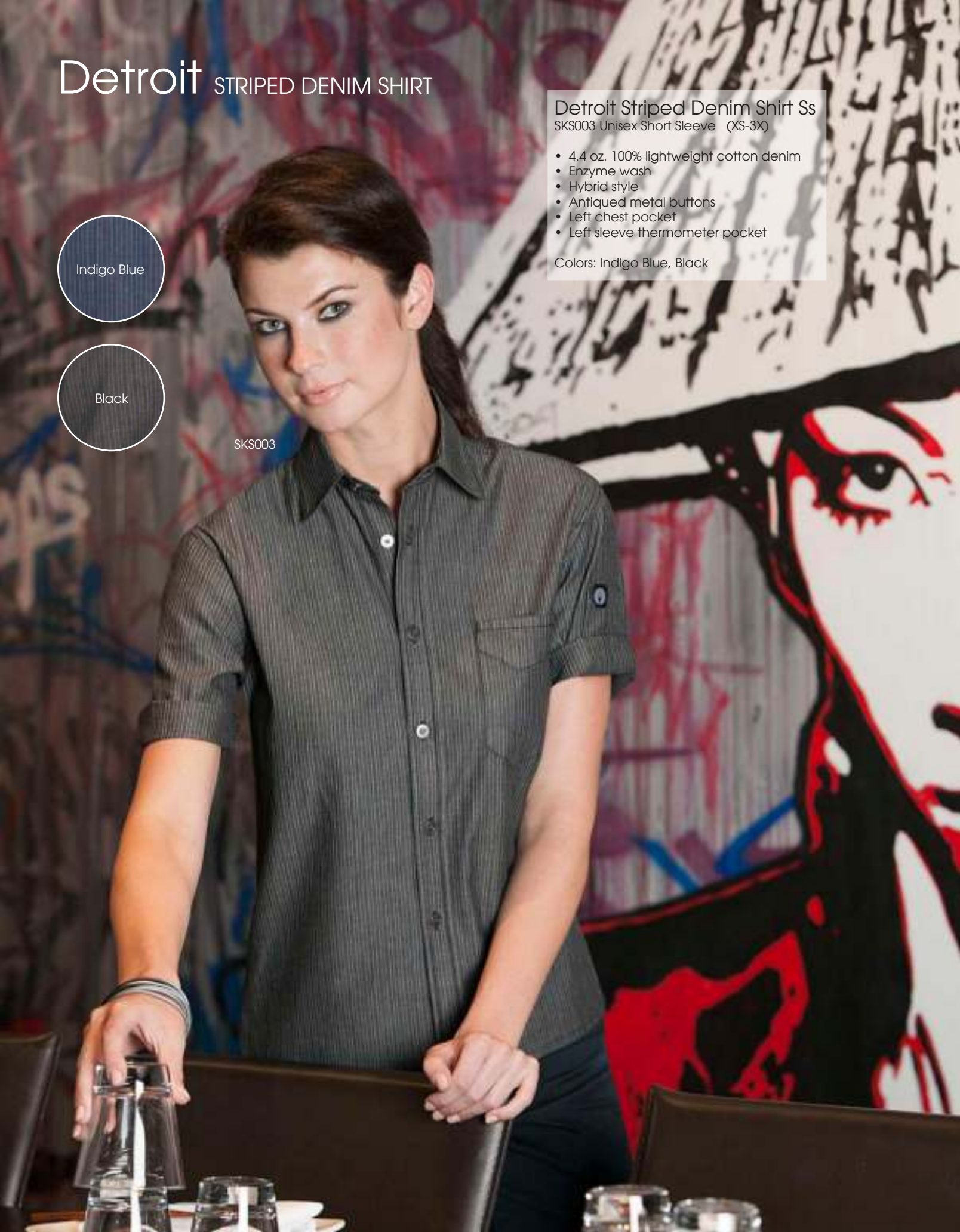
- 4.4 oz. 100% lightweight cotton denim
- Enzyme wash
- Hybrid style
- Antiqued metal buttons
- Left chest pocket
- Left sleeve thermometer pocket

Colors: Indigo Blue, Black

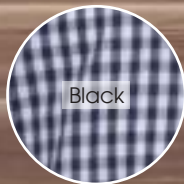
Indigo Blue

Black

SKS003



Gingham SHIRT



Gingham Dress Shirt

D500 Men's Long Sleeve (S-3X)
W500 Ladies Long Sleeve (XS-2X)

- 65/35 poly/cotton
- 3.2 oz. yarn-dyed poplin fabric
- Long-sleeve with two-button cuffs
- Button-down collar
- Double back yoke with box pleat
- Six buttons on placket
- Left chest pocket
- Ladies has a feminine silhouette

Colors: Black, Red, Dark Navy

batiste COLLECTION
100% Polyester

Batiste
3/4 Sleeve
Blouse

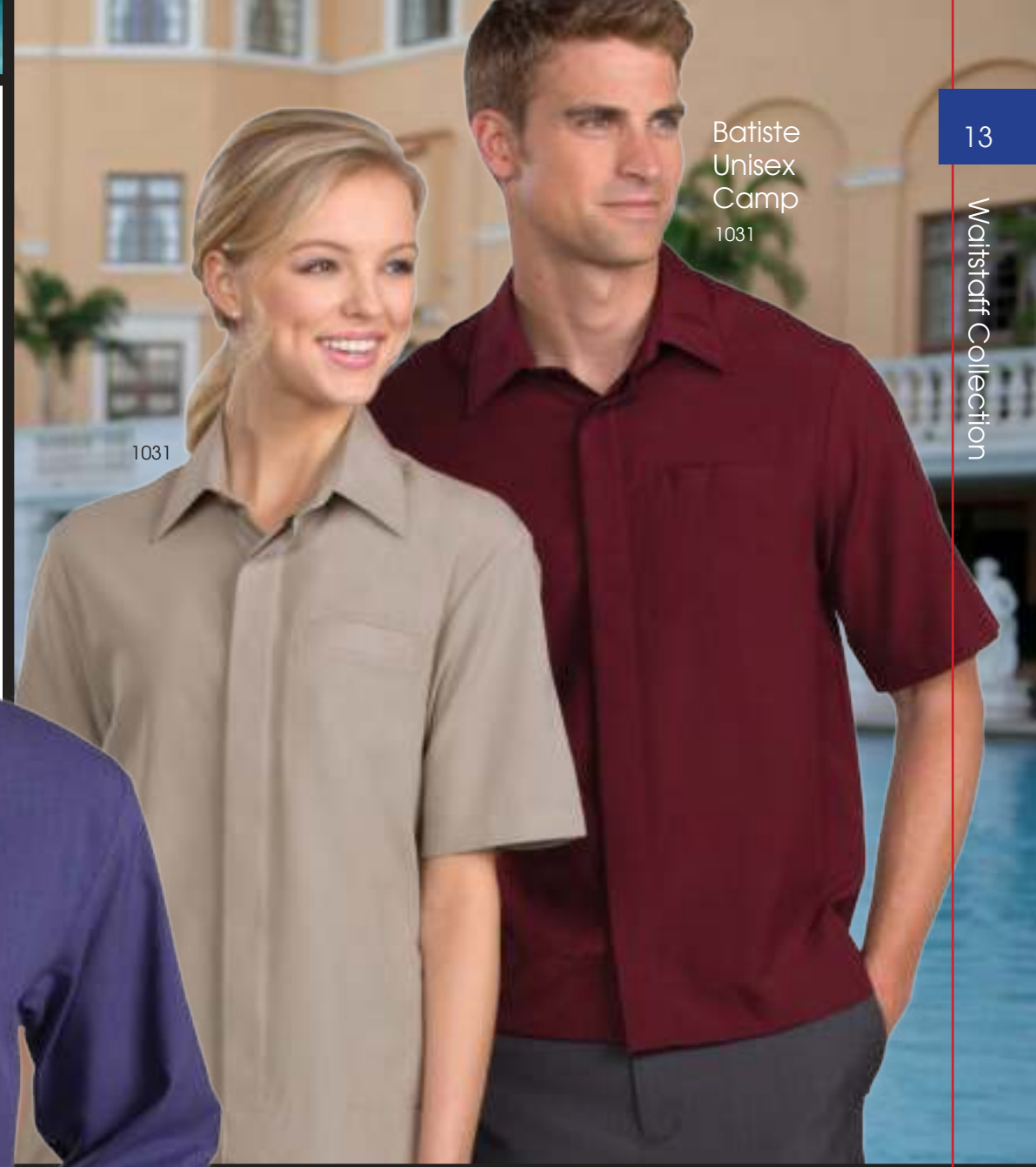
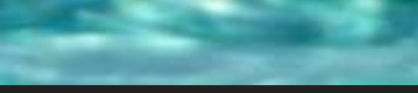
5295

Batiste Open Collar Shirt

Men 1395 (S-3XL)
Ladies 5395 (XXS-3XL)

- Contemporary pattern accents this soft, supple fabric
- Open neck w/ contoured stand-up collar
- Covered placket w/ matching buttons
- Men's has modern fit, straight back yoke seam and traditional shirt tail
- Ladies has front/back darts with princess seams
- 100% polyester
- Long sleeve

5395



Batiste
Unisex
Camp
1031

batiste shirt and blouse

100% Polyester

Ladies t 5292 (XXS-3XL)
Unisex Camp Shirt 1031 (XXS-6x)

- Contemporary pattern accents this soft, supple fabric
- Cafe or banded collar with covered placket
- Modern fit and straight back yoke seam
- Blouse has front and back darts with princess seams
- Two button adjustable cuff
- 100% polyester

Grape	Black	Tandoori	Platinum Grey	Riviera Blue	Burgundy	Steel Grey	Cream	White
1395	5292	5292	5292	5292	5292	5292	1031	5292
5395	1395	1395	1395	1395	1395	1031		1031
	5395	5395	5395	5395	5395			
	1031	1031	1031	1031	1031			

Classic Crossweave Ls Shirts

8215 Men's (S-6X)
6215 Ladies (XS-4XL)

classic
Crossweave
SHIRTS

- Wrinkle resistant, heathered crossweave
- 55% cotton/45% polyester blend, this 3 oz.
- Classic Collar and ladies features a Y-shaped placket
- Adjustable cuffs with matching buttons
- Ladies has a feminine silhouette with no pocket
- Men's has a left chest pocket

8215
Plum

6215
Plum



Ladies Pant
Flat Front
2588
Black

Ladies Pant
Flat Front
8760
Black

Batiste Stand-Up Collar Ls Shirts

1398 Men's (S-6X)
5398 Ladies (XXS-4XL)

- 100% Polyester, 3.5/3.75 oz. w/ Soil Release
- Open neck w/ Contoured stand-up collar
- Fly-front with dye-to-match buttons
- Two-button adjustable cuff
- Ladies' has feminine fit and front/back darts
- Men's has back yoke

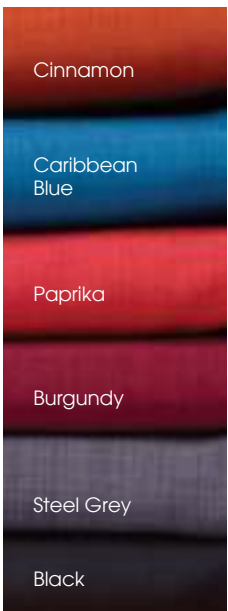
batiste
stand-up
COLLAR SHIRTS

1398

5398

Shown Modified w/sleeve cuff and simulated Roll-Back Sleeve tab

Hipster Waist Apron AWKV056 Navy/Black



Pant Flat Front 2588 Black

Ladies Pant Flat Front 8760 Vintage Khaki

BEST SELLER

1291

5291

batiste SHIRT & BLOUSE
100% Polyester

Men Cafe Shirt	1292 (S-6XL)
Ladies Cafe Shirt	5292 (XXS-3XL)
Men Banded Collar Shirt	1292 (S-6XL)
Ladies Banded Collar Shirt	5292 (XXS-3XL)

- Contemporary pattern accents this soft, supple fabric
- Cafe or banded collar with covered placket
- Modern fit and straight back yoke seam
- Blouse has front and back darts with princess seams
- Two button adjustable cuff
- 100% polyester

Black

Tandoori

Platinum

White

Burgundy

Steel
Grey

Riviera
Blue

BEST SELLER
1292

5292





87047

NEW

77047

Concourse Shirt

87047 Men's (S-5X)

77047 Ladies (XS-3XL)

- 3.1 oz., 100% polyester dobby stripe with stretch and moisture-wicking finish
- lining: 100% polyester mesh in upper back
- hidden button-down collar
- back vent system for added breathability
- durable flat felled side and underarm seams
- adjustable cuffs can be worn down or rolled up



Black



Stone



Navy



Dark Oakmoss



Crystal Blue



performance
STRETCH WOVEN

Crosscheck Woven Polo

85120 Men's (S-5X)
75120 Ladies (XS-3XL)

- 3.4 oz., 86/14 poly/ spandex with moisture-wicking
- contrast coverstitch details
- heat-sealed label
- three-button placket
- back yoke
- Men's: right-chest pocket with reverse coil semi-autolock zipper and rubber pull tab
- Ladies: front and back princess seams

Black

Stone

Dark
Oakmoss

Rust

Graphite

Navy

performance

STRETCH POLO

NEW

85120

75120

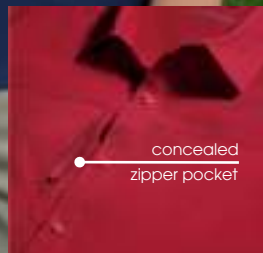


NEW

88675

78675

- White
- Red
- Navy
- Black
- Oak Moss



concealed zipper pocket



NEW

88802

performance

STRETCH WOVEN

Ripstop Performance Camp Shirt

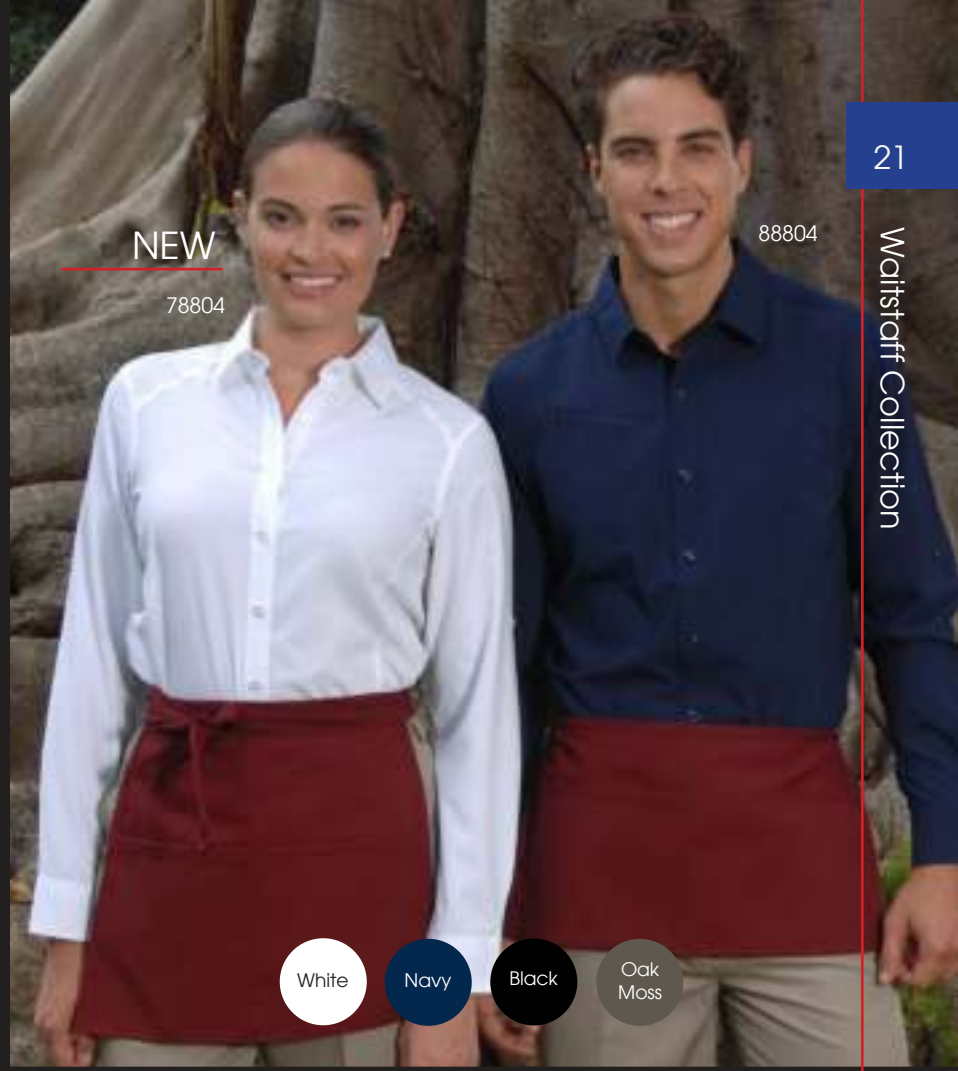
Men's 88675 (S-6XL)
Ladies 78675 (XXS-3XL)

- Textured ripstop with mechanical stretch
- 2.4 oz., 54/46 recycled poly / mechanical stretch ripstop
- Moisture-wicking
- Structured collar stand
- Heat-sealed label
- Stylized front and back yokes

- Men's
- Right-chest concealed zippered pocket
- Ladies
- Front and back princess seams
 - Side slits

heathered

FINISH



NEW

78804

88804

Carbon
HeatherLight
HeatherNight
HeatherCoral
HeatherLadies
only

78802

White

Navy

Black

Oak
Moss

performance

STRETCH WOVEN

Central Ave Mélange Performance Shirt

88802 Men's (S-3X)

78802 Ladies (XS-3XL)

- 2.9 oz., 100% polyester mechanical stretch two-tone mélange with moisture-wicking performance
- Hidden button-down collar
- Back yoke with side pleats
- Tailored adjustable cuffs with buttoned sleeve plackets
- Ladies front and back princess seams

Rejuvenate Performance Shirt w/ Roll-Up Sleeves

88804 Men's (S-3X)

78804 Ladies (XS-3XL)

- 2.9 oz., 50% recycled polyester, 50% polyester mechanical stretch ripstop with moisture-wicking performance
- Textured ripstop with mechanical stretch
- Structured collar stand with integrated collar stays
- Adjustable cuffs can be worn down or rolled up

Ladies

- Front and back princess seams
- Back right panel pocket with invisible zipper

Men's

- Back yoke with side pleats
- Right-chest pocket with invisible zipper

Textured Excursion Performance Shirt

Men's
Ladies

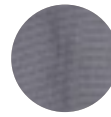
87046 (S-5XL)
77046 (XXS-3XL)

performance MINI CHECK WOVEN

- 4.2 oz., 70% rayon/30% polyester mini check with moisture-wicking
- Lining: 100% polyester mesh in upper back
- Hidden button-down collar
- Back vent system for added breathability
- Right-chest pocket with reverse coil semi-autolock zipper and rubber pull tab
- Durable side and underarm seams
- Adjustable cuffs can be worn down or rolled up



Crystal Quartz



Navy



Dark Oakmoss



Graphite



Rust



77046

back vent system for added breathability

right chest pocket

fabric, mini check w/ moisture wicking

87046

hidden button down collar



adjustable cuff

Café Shirt

Banded Collar Shirt

BEST SELLER

1290

Café Shirt

- 1290 Men's Long Sleeve (S-6X)
- 5290 Ladie's Long Sleeve (XXS-3X)
- 1240 Men's Short Sleeve (S-6X)
- 5240 Ladie's Short Sleeve (XXS-3X)

Banded Collar

- 1396 Men's Long Sleeve (S-6X)
- 5396 Ladie's Long Sleeve (XXS-3X)
- 1346 Men's Short Sleeve (S-6X)
- 5346 Ladie's Short Sleeve (XXS-3X)

- 3.25 oz., 65/35 poly/cotton broadcloth
- Covered placket w/matching buttons
- Long sleeve with adjustable cuff
- Straight back yoke seam
- Easy care wrinkle resistant finish
- Machine washable

BEST SELLER

1396

Grey

French Blue

Sand

Burgundy

Forest Green

White

Rust

Black

Royal

Willow Green

Espresso

5240

brio

5346

value GUAYABERA SHIRTS

Men's Value Guayabera

1673 Men's Short Sleeve (S-4X)

2331 Men's Long Sleeve (S-4X)

- 65/35 poly/cotton 3.75 oz
- Guayabera Accent Pockets
- Traditional Tucking throughout
- Signature Streamer On Placket
- Machine washable

1673

Ladies Value Guayabera

Short Sleeve

1672 Ladies (S-2X)

- 65/35 poly/cotton 3.75 oz
- Guayabera Accent Pockets
- Traditional Tucking throughout
- Signature Streamer On Placket
- Machine washable

BEST SELLER

1672

65/35
POLY/COTTON
BROADCLOTHE



GUAYABERA COLORS

 Navy	 Banana	 Blue	 Khaki
 White	 Burgundy	 Black	 Lime
	 Gold	 Rust	

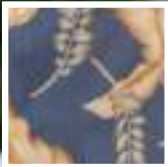
island print CAMP SHIRTS

Island Print Camp Shirt 1016 Unisex (XS-6X)

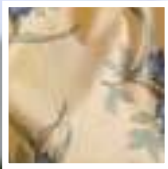
- 6.0 oz., 50/50 cotton/poly
- Short sleeve
- Left chest patch pocket
- Wooden Buttons
- Square hemmed shirt tail with side vents
- Machine washable



Unisex Island
1016-10 Black



Unisex Island
1016-01 Blue



Unisex Island
1016-03 Banana

1016
Banana

1016
Blue

50/50
COTTON/POLY

shown with micro fiber
Tan pleated front
short #2474

shown with micro
fiber Tan flat front
short #8422



1034
Burgundy

Blue

Sage

palm print

CAMP SHIRTS

55/45
COTTON/POLY



1032
Red

Black

Royal

leaf print

CAMP SHIRTS

Tropical Print Camp Shirts

Palm Print #1034 Unisex (XXS-6XL)

Leaf Print #1032 Unisex (XXS-6XL)

- Vibrant colors and prints in a traditional camp shirt
- Cotton rich fabric offers soft hand
- Left chest pocket, natural or tonal buttons on placket
- Straight bottom hem with side vents
- Straight back yoke seam
- Home launder
- 55% Cotton / 45% Polyester, 3.0 oz.wt.

tropical Print
CAMP SHIRTS

Hawaiian Print Camp Shirts

1015 Unisex (XXS-6XL)

- 6.0 oz., 50/50 cotton/poly
- Short Sleeve
- Left chest patch pocket
- Open neck
- Notched collar
- Side vents
- Home launder
- 6.0 oz., 50/50 cotton/poly



1015
Red



1015
Green

1015
Red

50/50
COTTON/POLY

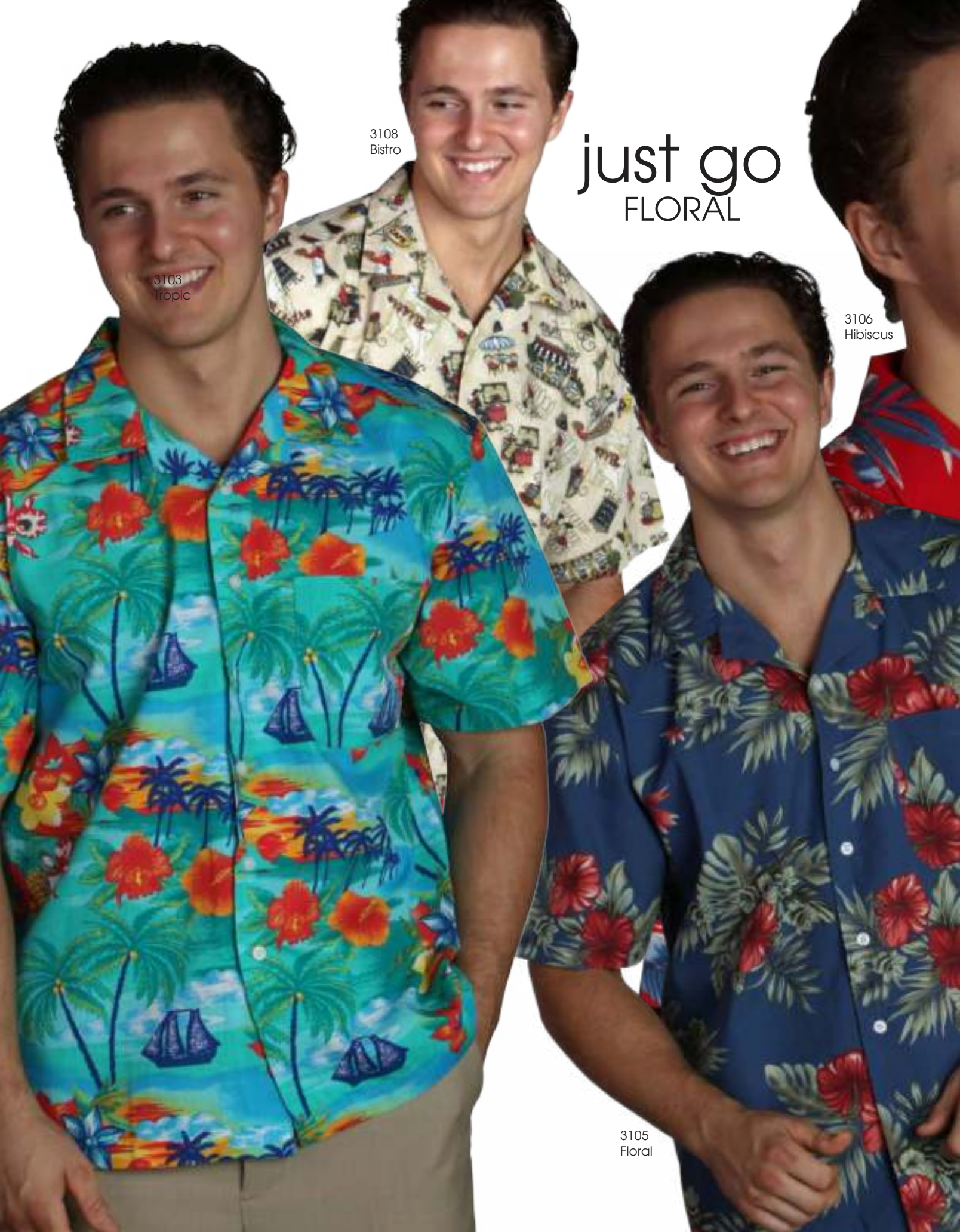
55/45
COTTON/POLY

Printed Camp Shirts
3107 Unisex (XS-4XL)

- Stain release
- Wrinkle resistant
- 4.5 ounces
- Side vents
- Straight bottom
- Hemmed sleeves
- Patch pocket
- Home laundry

3107
Mango Tonal

3107
Blue Tonal



3108
Bistro

just go

FLORAL

3103
Tropic

3106
Hibiscus

3105
Floral

55/45
COTTON/POLY

camp SHIRTS

BEST SELLER

3101
Tucan

3104
Cocktail

Printed Camp Shirts
3101, 3103, 3104, 3105, 3106, 3108
Unisex (XS-4XL)

- 55/45 cotton/poly poplin,
- 4.5 ozs
- Stain release
- Wrinkle resistant
- 4.5 ounces
- Side vents
- Straight bottom
- Hemmed sleeves
- Patch pocket
- Home laundry

performance

CAMP SHIRTS

093 Orange

012 Red

040 Cream

1035
Cream

406 Riviera Blue

1035
Riviera Blue





010 Black

079 Steel Grey

501 Slate Blue

Two-color
#1036

001 Blue

Performance Camp Shirts

Multicolor #1035 Unisex (XXS-6XL)

Two-color #1036 Unisex (XXS-6XL)

- Hibiscus prints with vibrant colors accent this soft and supple fabric
- Classic camp style, open neck with notched collar
- Full cut, left chest pocket and side vents at hem
- Natural buttons on placket, straight back yoke seam and two shoulder seams
- Wrinkle resistant and easy care
- 100% Polyester, 3.5/3.75 oz.wt.

100%
POLYESTER

Geometric Print

100%
MICROFIBER

1019
Blue



1019
Black

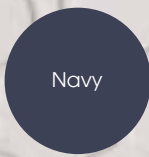
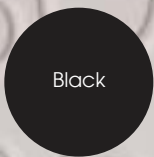


South Seas Camp Shirts

1019 Geometric Print Unisex (XXS-6X)

- Silky smooth camp shirts with the durability of microfiber
- Choose from two matching colors in solid, leaf print or geometric print
- Traditional camp collar, side seam vent at hem, natural buttons, straight back yoke seam, left chest pocket
- 100% Polyester Microfiber, 5.25 oz. wt.
- Machine washable

Colors: 001 Blue, 010 Black



easy care CAMP SHIRTS

Easy Care Poplin Camp Shirt
1029 Unisex (XXS-6X)

Made of new ring spun fabric with a soft hand.
Classic lightweight poplin camp.

- 65/35 poly/cotton poplin; 4.25 oz. wt.
- Full cut with traditional open collar
- Short sleeve
- Left chest pocket
- Matching buttons
- Easy care with stain & wrinkle resistant finish
- Machine washable

1029

65/35
POLY/COTTON



1029

dress
smart
LOOK SHARP



Men's Premium Performance Tee
1514
White



Fashion Vest
Men's VNN01
Ladies VNN01W
Grey

Ladies Premium Performance Tee
5514
White



Hipster Apron
AWKV056
Navy Black

Performance Skort
JAULCB07124
Black

Men's Flat Front Performance Short
2472
Black



70/30
RAYON/POLY

ISLAND INSPIRED

EASY-GOING FIT.
SERIOUSLY DURABLE.

Barbados Textured Camp Shirt Styles

- 70% rayon, 30% polyester
- short-sleeve camp shirt with special shadow weave
- wrinkle-resistant
- sand washed for softness
- full-button front
- synthetic coconut shell buttons
- replacement buttons

Barbados Textured

M560W

HARRITON LADIES' BARBADOS TEXTURED Camp Shirt

- point collar
- front and back contour darts

Sizes: S, M, L, XL, 2XL

Colors: Black, Cloud Blue, Crème, Khaki, Navy, Nectarine, Palm Green, Parrot Red, Pineapple, Pool Blue

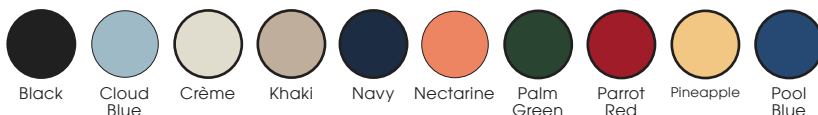
M560

Harriton Men's Barbados Textured Camp Shirt

- left-chest pocket
- side vents

Sizes: S, M, L, XL, 2XL, 3XL, 4XL

Colors: Black, Cloud Blue, Crème, Khaki, Navy, Nectarine, Palm Green, Parrot Red, Pineapple, Pool Blue





M570



M570W



M575



Navy/
Crème

Sand/
Crème

Cloud
Blue/
Crème

Black/
Crème

Green
Mist/
Crème

66/34
RAYON/POLY

Bahama Cord

Bahama Cord Camp Shirt Styles

- 66% rayon, 34% polyester pieced bedford cord
- wrinkle-resistant
- self-fabric collar
- full-button front
- synthetic coconut shell buttons
- replacement buttons

M570

HARRITON MEN'S BAHAMA CORD Camp Shirt

- left-chest pocket

Sizes: S, M, L, XL, 2XL, 3XL, 4XL

Colors: Black, Cloud Blue, Crème, Green Mist, Navy, Sand, Tile Red

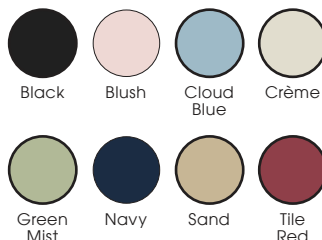
M570W

HARRITON LADIES' BAHAMA CORD CAMP SHIRT

- feminine fit with darts

Sizes: S, M, L, XL, 2XL

Colors: Black, Blush, Cloud Blue, Crème, Green Mist, Navy, Sand, Tile Red



M575

Harriton Men's Two-Tone Bahama Cord Camp Shirt

- 66% rayon, 34% polyester bedford cord
- wrinkle-resistant
- sand wash finish
- self-fabric collar
- contrast panels
- full-button front
- dyed-to-match buttons
- replacement buttons

Sizes: S, M, L, XL, 2XL, 3XL, 4XL

Colors: Black/Crème, Cloud Blue/Crème, Green Mist/Crème, Navy/Crème, Sand/Crème

Features for all styles:



Jacquard Camp Shirt

1030

Black

Soft Red

Margarita

Sapphire

100%
POLYESTER

performance
FABRIC

- Crisp & clean
- Cling-free style
- Lo-pil fabric
- Anti-static finish
- Wrinkle resistant
- High color retention

Jacquard Camp Shirt



Jacquard Camp Shirt

Unisex #1035 (XXS-6XL)

- Fabric, 100% polyester and accented with a tone on tone contemporary weave
- Classic camp style, open neck with notched collar
- Full cut, left chest pocket, and side vents at hem
- Vibrant colors, wrinkle resistant fabric is soft and supple
- Natural buttons on color shirts; matching buttons on black shirt; straight back yoke seam and two shoulder pleats

1030
Aqua

1030
Soft Red

Custom Camp Shirts

624B Men's (S-4X)
 624BL Ladies (XXS-3X)
 40609 Ladies (XXS-3X)

- Open collar with sewn in collar stays
- Cuffed sleeves
- Left chest pocket
- Side vents
- Wood buttons
- Ladies has a feminine silhouette.
- Machine washable

Custom made with short delivery times.

Colors & fabrics available are noted below.

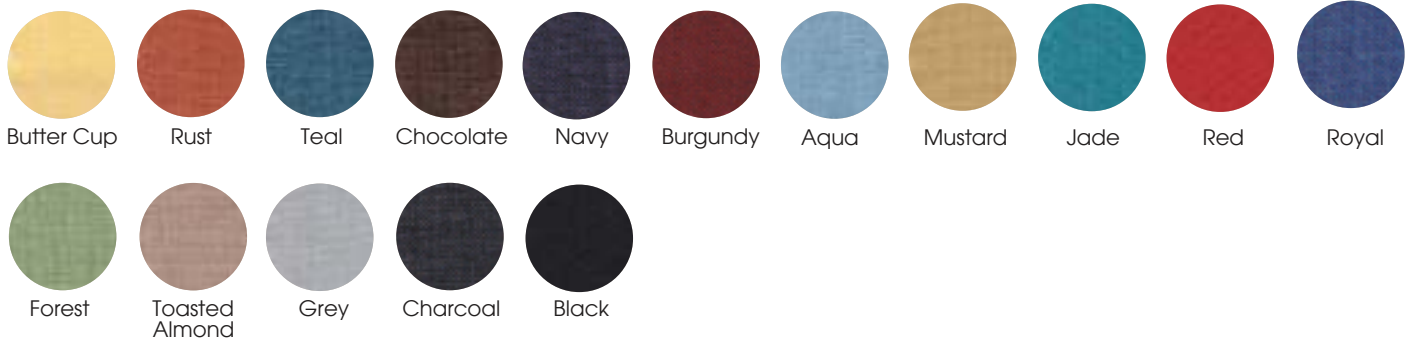
Customer Service can assist you.



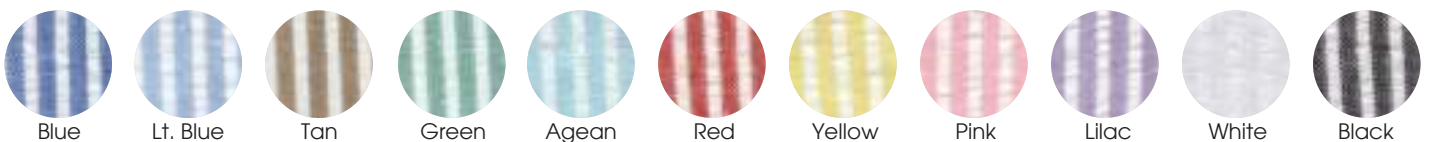
Ladie's Seersucker Y-neck Camp Shirt 40609

Men's Seersucker Camp Shirt 624B

zanzibar yarn dyed polyester color options



seersucker poly cotton color options



Men's
Zanzibar
Camp Shirt
624B



Ladies
Zanzibar
Camp Shirt
624BL



leaf pattern camps

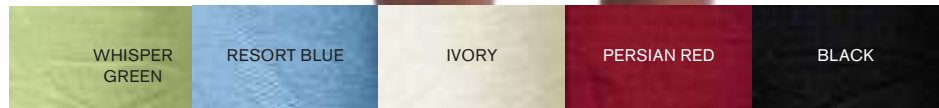
SOIL-RELEASE FINISH

Men's Camp Ss
S536M
Resort Blue

shown
modified

Modified to
a cuffed sleeve
with tab

Men's Flat Front
Performance Short
2472
Navy





Ladies Camp Ss
L536M
Resort Blue

Ladies Flat Front
Performance Short
8422
Navy

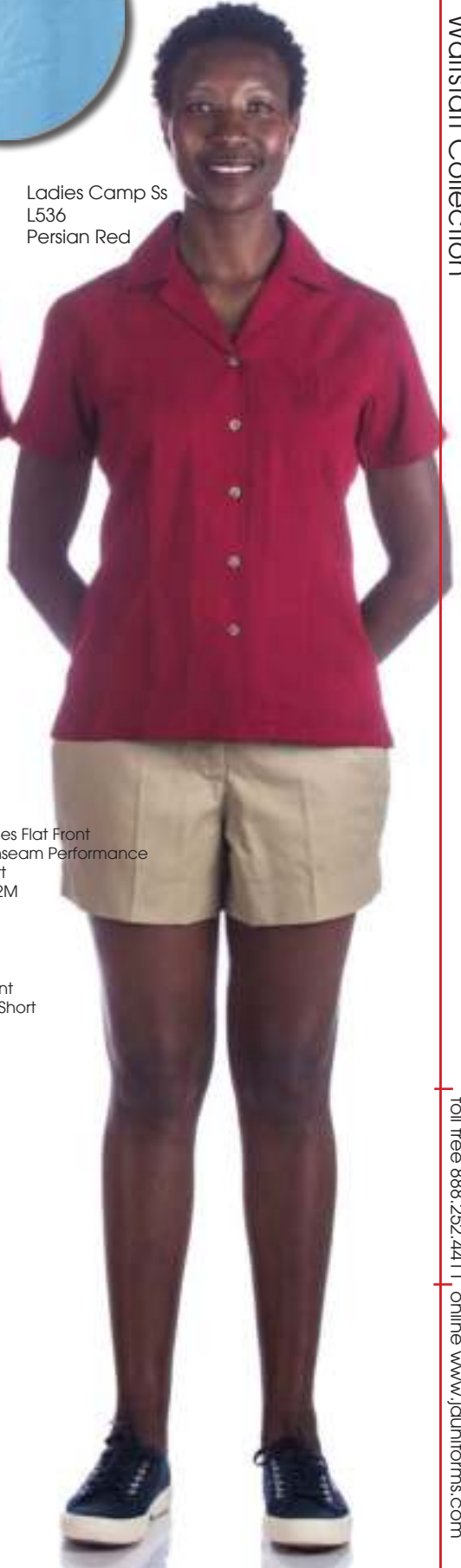


Men's Camp Ss
S536
Persian Red

Men's Flat Front
Performance Short
2472
Tan



Leaf
Pattern



Ladies Camp Ss
L536
Persian Red

Ladies Flat Front
4" inseam Performance
Short
8422M
Tan

in-stock
modified
QUICK & EASY

Ladies Performance
Camp Shirt Ss
JAUL662-M
Celadon/White

Dobby Textured Fabric
60/40 cotton/poly

Shown un-modified
in-stock
JAUS662

Modified Collar
trimmed in
White

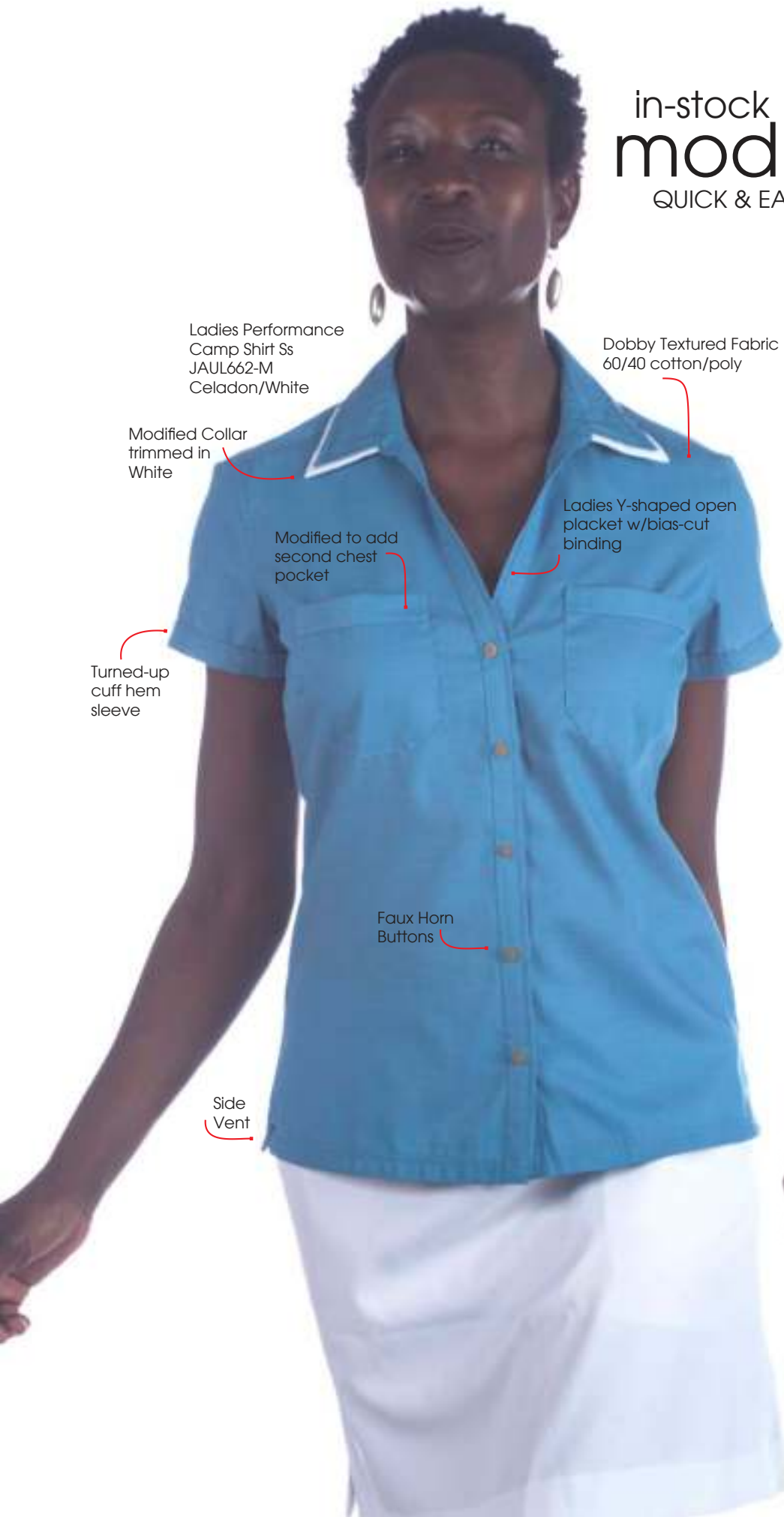
Modified to add
second chest
pocket

Ladies Y-shaped open
placket w/bias-cut
binding

Turned-up
cuff hem
sleeve

Faux Horn
Buttons

Side
Vent



Men's Performance
Camp Shirt Ss
JAUS662-M
Celadon/White



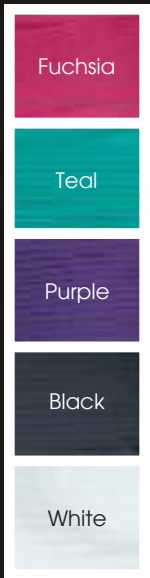
Ladies Performance
Camp Shirt Ss
JAUL662-M
Celadon/White



Men's Chino
Flat Front Short
JAUPT20M
White

Performance Skort
JAULCB07124
White

tuxedo SHIRTS



8000

Colored Tuxedo Shirt

8000 Unisex Long Sleeve (XS-5X)
8011 Unisex Short Sleeve (XS-5X)
8022 Unisex Sleeveless (XS-5X)

- 65/35 Poly/Cotton
- Wing Tip Collar
- Twelve 1/4" pleats on each side
- Four black plastic studs & pearl buttons (convertible)
- Adjustable & convertible cuffs for use with buttons or cuff links
- Guide Loop on back of neck for band bowties

For women ordering a Men's shirt, order one size smaller than normally worn.

Example: if the Woman wears a Woman's size Medium, order a Men's size Small

8801

Laydown Collar Tuxedo Shirt

8801 Men's - Pure White (XS-5X)
8901 Ladies - Pure White (2-28)

- 65/35 Poly/Cotton
- Lay-Down Collar
- Twelve 1/4" pleats on each side
- Four black plastic studs & pearl buttons (convertible)
- Adjustable & convertible cuffs for use with buttons or cuff links

Value Broadcloth Shirt

1363 Men's Long Sleeve (S-6X)

1313 Men's Short Sleeve (S-6X)

5363 Ladies Long Sleeve (XXS-3XL)

5313 Ladies Short Sleeve (XXS-3XL)

(See Pg. 40-41)

- 65/35 Poly/Cotton Broadcloth
- Stay collar; no back box pleat
- Left chest pocket for men; no pocket for women (except white)
- Matching buttons
- Easy care wrinkle resistant finish
- Machine washable

value dress SHIRTS

49

Waitstaff Collection

long sleeve,
short sleeve,
male or female

1363

White

Slate Blue

Burgundy

French Blue

Dark Gray

Black

Royal Blue

toll free 888.252.4411 | online www.juniforums.com



7217

6217

UPTO
6XL
AND
13
COLORS



6217S

7217S

value twill SHIRTS

Value Twill Shirts

- 7217 Men's Long Sleeve (XS-6X)
- 6217 Ladies' Long Sleeve (S-4X)
- 7217S Men's Short Sleeve (XS-6X)
- 6217S Ladies' Short Sleeve (S-4X)

- 65/35 poly/cotton blend, 6.5 ozs.
- Soft touch finish
- Treated with DuPont Teflon® Fabric Protector
- Wrinkle resistant
- Button down collar
- Adjustable cuffs
- Button sleeve placket
- Double back yoke
- 2 side back pleats
- Patch pocket with pencil compartment
- Bone horn buttons
- Sizes: XS-6XL
- Talls LT-3XLT
- Classic fit*

T- Also Tall Sizes Men's Long Sleeve BG-7217T	Men's Long Sleeve BG-7217T XS-6XL & TALLS	Ladies's Long Sleeve BG-6217T S-4XL	Men's Short Sleeve BG-7217S XS-6XL	Ladies's Short Sleeve BG-6217S S-4XL
---	---	---	--	--

Red	T			
Light Blue	T			
Navy	T			
Royal	T			
Maine	T			
Temperance	T			
Burgandy	T			
Hunter	T			
White	T			
Black	T			
Tan	T			
Yellow	T			
Purple	T			
Orange	T			
Kelly	T			

value poplin

SHIRTS



White

Light Pink

Tropical Pink

Hibiscus

Red

Burgundy

Yellow

Gold

Athletic Gold

Texas Orange

Light Stone

Stone

Coffee Bean

Light Blue

Maui Blue

Ultramarine Blue

Mediterranean Blue

Royal

Navy

Classic Navy

Eggplant

Court Green

Clover Green

Dark Green

Steel Grey

Black



S608



L608



L508

UPTO
10XL
AND
TALL
SIZES



S508



L612

Value Poplin Shirts

- S608 Men's Long Sleeve (XS-10X)
- S508 Men's Short Sleeve (XS-6X)
- L608 Ladie's Long Sleeve (XS-6X)
- L508 Ladie's Short Sleeve (XS-6X)
- L612 Ladie's 3/4 Sleeve (XS-4X)
- L608M Ladie's Maternity (XS-4X)

- 4.5 oz., 55/45 Cotton/Poly
- Wrinkle resistance
- Men's button down collar
- Ladie's open collar
- Men's w/patch pocket
- Ladie's No patch pocket or back pleat
- Traditional relaxed look
- Machine washable

Colors: White, Black, Red, Burgundy, Light Blue, Med. Blue, Royal, Navy



L608M
White or black only



Adjustable
back tie

Fashion Bid Apron A500 (OSFA)

- Yarn-dyed poly/cotton
- Adjustable neck closure
- Divided patch pocket
- Size 34"L x 24"W

Colors: A) Grey/Charcoal/Red,
B) Navy/French Blue/White,
C) Brown/Cream Stripe

NEW

A.

B.

C.

A500



stripe it up YARN DYED



B.

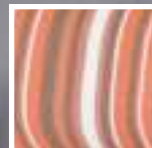
M

A500MB

C.



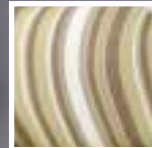
A) Orange/White/Brown



B) Merlot/Grey/White



C) Lime/White/Brown



F24S

Modified Fashion Bistro Apron A500MB (OSFM)

- 65/35 poly/cotton
- Yarn-dyed poly/cotton
- Soil release treatment
- Divided patch pocket
- Size 24" L x 24" W

Colors:

- A) Grey/Charcoal/Red
- B) Navy/French Blue/White
- C) Brown/Cream Stripe

Striped Bistro Apron F24S (OSFM)

- 65/35 poly/cotton
- Yarn-dyed poly/cotton
- Soil release treatment
- Patch pocket w/pencil divide
- Size 32" L x 28" W

Colors:

- A) Orange/White/Brown
- B) Merlot/Grey/White
- C) Lime/White/Brown

Pheonix Bib Apron

AB027 (OSFM)

- 64/36 cotton/poly
- 7.1 oz. fabric
- Contrast ties
- Adjustable neck buckle
- Reinforced stress points
- Double front pockets
- Available in white, black, green, orange and red
- Size: 34"L x 30"W

Colors: White, Black, Green, Orange, Red

AB027
Orange



Pheonix Half Bistro Apron

AW037 (OSFM)

- 64/36 cotton/poly
- 7.1 oz. fabric
- Contrast ties
- Reinforced stress points
- Double front pockets
- Available in black, white, green, red and orange
- Size: 19"L x 31½"W

Colors: White, Black, Green, Orange, Red





AW037

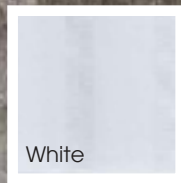
Pheonix Bistro Apron

AW035 (OSFM)

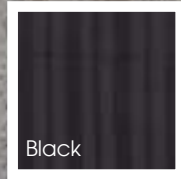
- 64/36 cotton/poly
- 7.1 oz. fabric
- Contrast ties
- Reinforced stress points
- Right patch pocket with pencil divide
- Available in white, black, green, orange and red
- Size: 32"L x 31½"W

Colors: White, Black, Green, Orange, Red

AW035



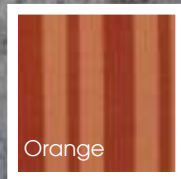
White



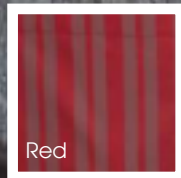
Black



Green



Orange



Red



Wide Half Bistro Apron w/
Contrast Ties
AW034 (OSFM)

- 65/35 poly/cotton
- 6.2 oz. fabric
- Contrast stitching and ties
- Extra long ties
- Grommets for ties attachment
- Reinforced stress points
- Patch pockets with center divide
- Size: 24"L x 32"W

Colors:
Black/Red
Black/Grey
Black/Blue



AW034
Black/Red



Manhattan Half Bistro AW046 (OSFM)

- 100% cotton denim
6.5 oz. fabric
 - Reverse fabric ties and pockets
 - Riveted pocket ends
 - Zipper hip pocket
 - Double front pockets
- Size: 19"L x 28½"W

Colors: Black, Indigo Blue

AW046
Black



Portland Bib Apron AB037 (OSFM)

- 83/17 cotton/poly denim
8.3 oz. fabric
- Contrast tape ties
- Adjustable metal neck buckle
- Criss-cross bar tacks
- Front pocket with cell phone divide
- Available in black and indigo blue
- Size: 34"L x 30"W

Colors: Indigo Blue, Black



AB037
Black

Brooklyn Bib Apron

AB028 (OSFM)

- 62/38 cotton/poly
- 6.5 oz. fabric
- Contrast ties with grommets
- Right chest pocket
- Double front pockets
- Riveted pocket ends
- Available in chocolate-blue and charcoal-gray
- Size: 34"L x 30"W

Colors: Chocolate/Blue, Charcoal/Grey

AB028
Chocolate/
Blue



Chocolate/
Blue



Charcoal/
Grey

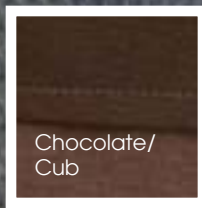
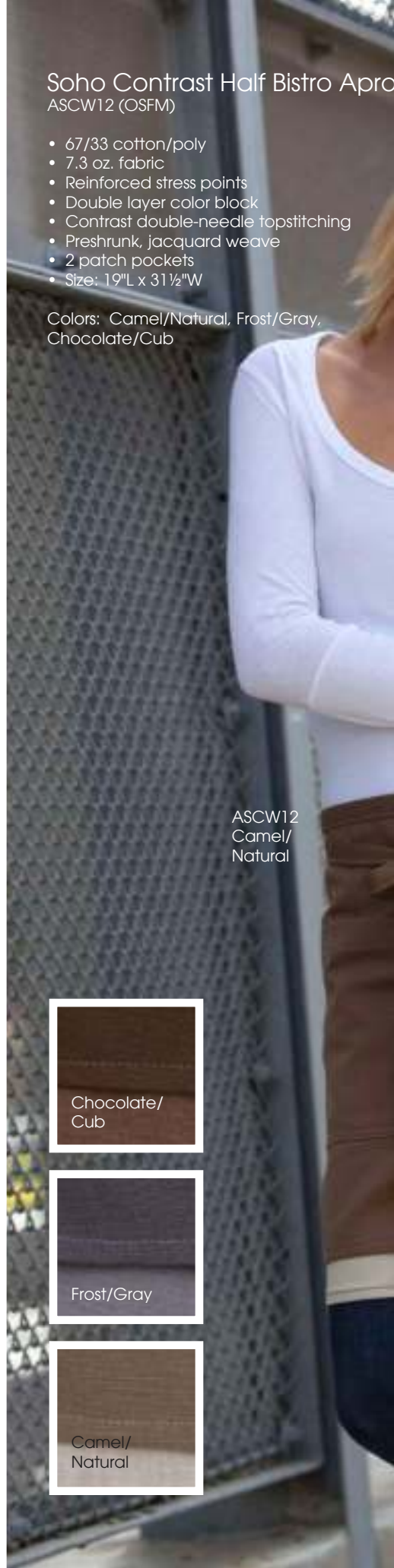
Soho Contrast Half Bistro Apron

ASCW12 (OSFM)

- 67/33 cotton/poly
- 7.3 oz. fabric
- Reinforced stress points
- Double layer color block
- Contrast double-needle topstitching
- Preshrunk, jacquard weave
- 2 patch pockets
- Size: 19"L x 31 1/2"W

Colors: Camel/Natural, Frost/Gray,
Chocolate/Cub

ASCW12
Camel/
Natural



Chocolate/
Cub



Frost/Gray



Camel/
Natural



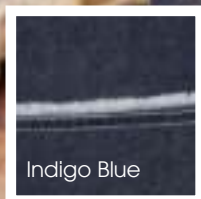
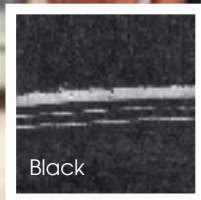
Bronx Bib Apron AB041 (OSFM)

- 100% cotton denim
- 8.3 oz. fabric
- Reverse fabric ties with belt loops
- Adjustable metal neck buckle
- Selvage edge pocket detail
- Riveted pocket ends
- Double front pockets
- Chest pocket
- black and indigo blue
- Size: 34"L x 30"W

Colors: Black,
Indigo Blue



AB041
Black





color-blocked

APRONS



Split Bistro Apron
9026 (33"L x 27"W)
Black/Red



Bib Apron
9028 (28"L x 24"W)
Black/Royal



Half Bistro Apron
9027 (19"L x 28"W)
Black/Khaki

pocket

APRONS





Three-Pocket Bib Apron
9002 (24"L x 28"W)



Three-Pocket Waist Apron
9003 (11"L x 23"W)



No Pocket Bib Apron
9004 (28"L x 24"W)



Two-Pocket Butcher Apron
9005 (34"L x 23"W)



Two-Pocket V-Neck
Bib Apron
9009 (32"L x 28"W)



Three-Pocket E-Z Slide
Bib Apron
9010 (24"L x 28"W)

FEATURES:

- Durable with extra-long ties, bar tacked stress points and pockets sized to accommodate tablets
- Butcher, Bib and V-Neck Bib Aprons have two-piece slide neck adjustment
- E-Z Slide Bib Apron has a sliding tie adjustment system for a perfect fit
- 65% Polyester/35% Cotton Twill, 7.0 oz.

DECORATION:

Embroidery, Heat Seal, Heat Transfer

SIZES:

One size fits all

	000 White	007 Navy	010 Black	012 Red	015 Khaki	030 Black Pinstripe	041 Royal	063 Wine	079 Steel Grey	084 Hunter
9002	*	*	*	*	*	*	*	*	*	*
9003		*	*	*	*		*	*	*	*
9004	*	*	*	*	*		*	*		*
9005	*	*	*	*		*	*	*		*
9009			*			*			*	
9010			*							



4006 Twill Chest-Pocket Vest
\$16.95



4106 Twill Two-Pocket Vest
\$16.95



9006 Cobbler Apron
Regular \$13.90 | Tall \$16.68

FEATURES:

- Durable with extra-long ties, pockets sized to accommodate tablets, contrasting pockets and top stitching, bar tacked stress points
- Twill Vest: available with chest pocket with pencil track or with two waist pockets
- Cobbler Apron: two divisional pockets, ties at side
- 65% Polyester/35% Cotton Twill, 7.0 oz.

DECORATION:

Embroidery, Heat Seal, Heat Transfer

COLORS:

000 White, 007 Navy, 010 Black, 012 Red, 015 Khaki, 041 Royal, 063 Wine, 084 Hunter

SIZES:

(Vests) Unisex XS-4XL, Scale I;
(Cobbler Apron) Regular (28"L x 17"W) or Tall (31½" x 17¾"W)

	000 White	007 Navy	010 Black	012 Red	015 Khaki	041 Royal	063 Wine	084 Hunter
4006	*	*	*	*	*	*	*	*
4106		*	*	*		*	*	*
9006	*	*	*	*	*	*	*	*



Bistro Apron
9019 (33"L x 27"W)
Chalkstripe

chalkstripe
APRONS

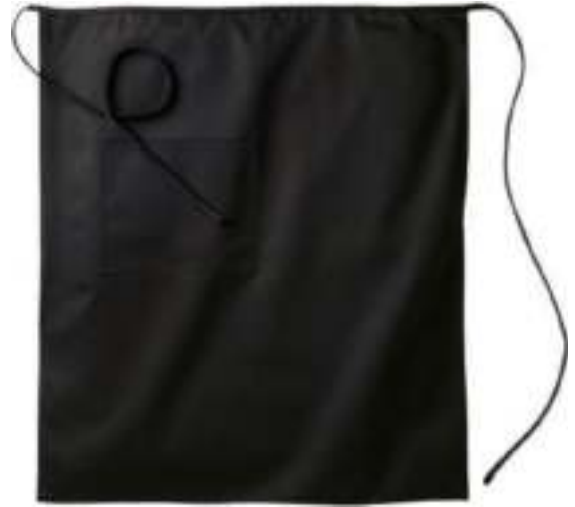
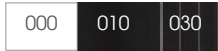


Butcher Bib Apron
9015 (34"L x 23"W)
Chalkstripe



Two-Pocket Half Bistro Apron

9007 (19"L x 28"W)
White, Black, Pinstripe



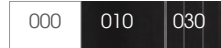
One Pocket Bistro Apron

9008 (33"L x 28"W)
Black



Two-Pocket Bistro Apron

9012 (33"L x 28"W)
White, Black, Pinstripe



No Pocket Bistro Apron

9030 (33"L x 28"W)
White, Black



Half Bistro Apron

9017 (11"L x 23"W)
Chalkstripe

Ask to speak with a knowledgeable staff to assist you in choosing your unique apron. Small minimums will apply.

C CUSTOM

A. Block Bistro w/vent

C CUSTOM

B. Striped Bistro w/flap, inset pocket & contrast details

M MODIFIED

C. Bistro w/inset pocket & contrast Slit

custom aprons & shirts



 CUSTOM

 CUSTOM

D. Bistro w/
striped fabric

E. Bistro w/
pointed flap
w/contrast trim



V-Neck Apron
3041 (28"W x 32" L)

- Adjustable neck
- 2 divided pockets
- 20 core colors
- 2 premium colors



Scoop Apron
3042 (28"W x 24" L)

- Snap adjustable neck
- 3 divided pockets 2 patch pocket
- 20 core colors
- 2 premium colors



Half Bistro 2 Pck
3056 (28"W x 19" L)

- 2 divided pockets
- 20 core colors



Half Bistro 3 Pck
3060 (22"W x 18" L)

- 3 functional pockets
- 20 core colors



20 core colors IN ALL STYLES



Full Bistro
3052 (28"W x 33" L)

- 1 patch pocket
- 20 core colors
- 2 premium colors



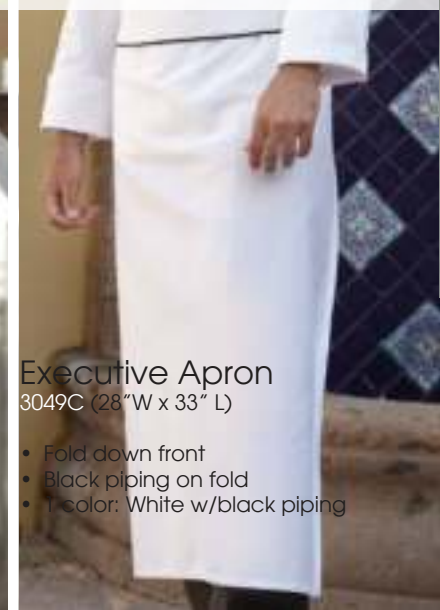
Bistro 2 Pck
3053 (28"W x 33" L)

- 2 patch pocket
- 20 core colors



Inset Pocket Bistro
3059 (28"W x 33" L)

- 1 inset pocket
- 20 core colors



Executive Apron
3049C (28"W x 33" L)

- Fold down front
- Black piping on fold
- 1 color: White w/black piping

65/35 poly/cottons aprons ALL STYLES



Waist 2 Pck
3065 (23"W x 11" L)

- 2 section pockets
- 20 core colors



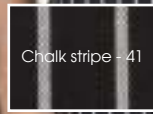
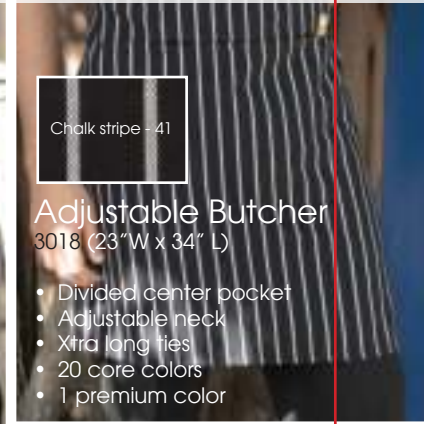
Waist 3 Pck
3067 (23"W x 11" L)

- 3 section pockets
- 20 core colors



Reversible Waist
3037 (22"W x 12" L)

- 3 divided pockets
- 20 core colors



Chalk stripe - 41

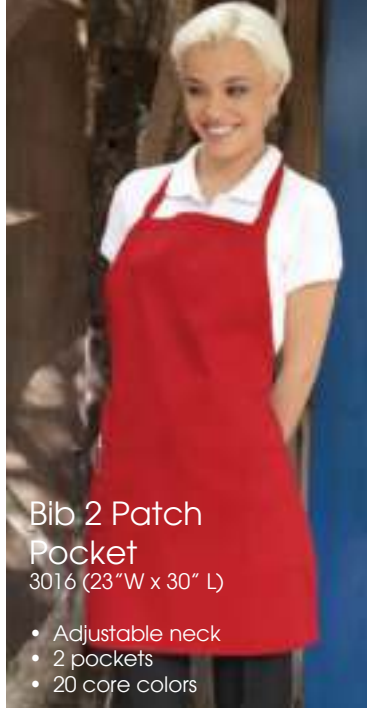
Adjustable Butcher
3018 (23"W x 34" L)

- Divided center pocket
- Adjustable neck
- Xtra long ties
- 20 core colors
- 1 premium color



Cobbler Apron
3075 (20"W x 28" L)
Xtra Long
3077 (22"W x 31" L)

- Adjustable side ties
- 2 divided pockets
- 20 core colors



Bib 2 Patch Pocket
3016 (23"W x 30" L)

- Adjustable neck
- 2 pockets
- 20 core colors



Adjustable Bib 3 Pocket
3011 (28"W x 24" L)

- Adjustable neck
- 3 pockets
- 20 core colors



Adjustable Bib
3010 (24"W x 28" L)

- Adjustable neck
- No pockets
- 20 core colors

Premium Colors:

Chalk stripe - 41

Pincord stripe - 33



Core Colors:

value unisex VEST



Navy

Royal

Red

Black

Value Unisex Vest 1360 Unisex (S-3X)

- 7.25 oz. 65/35 poly/cotton
- Chest pocket
- Two lower front pockets
- Machine or Industrial washable



essentials

aprons ALL TYPES

Bar Apron

2134 Unisex (28" x 32")

- 7.5 oz. Twill, 65/35 poly/cotton
- Basic pocketless styling
- Tubular braid ties
- Machine or Industrial washable

Color: White



4-Way Bar Apron

1790 Unisex (29" x 32")
(open dimensions)

- 7.5 oz. Twill, 65/35 poly/cotton
- Basic pocketless styling
- Tubular braid ties
- Machine or Industrial washable

Color: White

Standard Bib Apron w/Pocket

1751 Unisex (30" x 33")

- Pencil pocket on chest
- 7.5 oz. 65/35 poly/cotton
- Machine or Industrial washable

Colors: Black, White



1751
w/pocket
2 colors



1430
No pocket
7 colors

Royal

White

Navy

Dark
Red

Hunter
Green

Red

Black

Standard Bib Apron

Strong, tubular braid ties / Soil release
1430 Unisex (27" x 31")

- 7.5 oz. 65/35 poly/cotton
- Pocketless
- Machine or Industrial washable

Colors: White, Royal, Navy,
Dark Red, Hunter Green, Red, Black

personalize OPTIONS

direct EMBROIDERY

At J.A. Uniforms we have an in-house embroidery department ready to personalize your attire.

Our experts place the finishing touch to any garment by adding your logo or name to make your garment unique.

Call our embroidery specialists or visit our website for more information on how to achieve a personal look.

Personalized Fonts

#1 Adobe Caslon Pro	#6 FELIX TITLING
#2 Arial	#7 <i>Edwardian Script</i>
#3 <i>Script MT Bold</i>	#8 <i>Monotype Corsiva</i>
#4 <i>Brush Script Std</i>	#9 <i>Palace Script MT</i>
#5 Franklin Gothic	

screen PRINTING

At J.A. Uniforms we offer Direct to Garment Printing (screen printing), a stylish and perfect option for larger logos.

Call to speak with a printing expert for further information regarding how to customize your Shirts, Jackets or T-shirts and to learn more about cost, colors and minimum orders.

We are ready to assist you.



Cool Vent™ Beanie
DFBB Unisex (OSFM)

Value Colored
3/4 Chef Coat
JLCL Unisex (XS-3X)

Full Bistro
3052 (28"W x 33" L)
page 250



custom
IS ENCOURAGED



J.A. Uniforms
12323 S.W. 132nd Court
Miami, FL 33186
305.234.1231 | 888-252-4411 | fx: 305.234.1219
www.jauniforms.com