



the
tailored
collection

STYLE
GUIDE

JA
uniforms

APPAREL ANYTHING

Thoughtful design, Simply executed

Men's Blazer
Vintage Khaki
3525

Ladies
Cardigan
Sweater
Navy
7056

Men's Sweater
Quarter Zip
Navy
4012

Straight Skirt
Vintage Khaki
9761

Flat Front Pant
Vintage Khaki
2588

Ladies Short
Micro Fiber
Tan
8422



ING BUT UNIFORM

In-Stock & Quick Delivery

Men's Blazer
Vintage Khaki
3525

Ladies Blazer
Vintage Khaki
6525

Men's V-Neck
Sweater Vest
Navy
4092

Straight Skirt
Vintage Khaki
9761

Men's Short
Micro Fiber
Tan
2472

Ladies Pant
Flat Front
8760MC
Vintage Khaki

Flat Front Pant
Vintage Khaki
2588

Fit in
ANYWHERE.



Stand out
EVERYWHERE.





natural stretch
WASHABLE
Easy Care



*Washable
Suit &*

ble
Seperates



easy care / washable / natural stretch

7

Tailored Collection



toll free 888.252.4411 online www.jauniforms.com

GREY MA

Paired w/
Men's Shirt Ls
Stretch Twill
Stone
DG530

Knit Necktie
Navy/Stone

Pocket Square
Jacket Lining



Paired w/
Ladies Blouse Ls
Stretch Twill
Slate Blue
DG530W

Scarf
Checker Board
Blue
SC53
31" Square



Paired w/
Men's Shirt Ls
Bankers Stripe
Burgundy
D645

Thin Necktie
Burgundy

Pocket Square
Burgundy



ATTERS

Men's Blazer
Steel Grey
3525

Paired w/
Men's Shirt Ls
Petit Gingham
Pink
D640
Thin Necktie
Black/Grey

Paired w/
Ladies Blouse Ls
Petit Gingham
Pink
D640W

Scarf
Spatter Floral
Black
SC60
54"L x 8" W

Paired w/
Sleeveless Cow
Neck Blouse
Brick
5410

Ladies Blazer
Steel Grey
6525

Men's Blazer
3525
Navy
Nailhead
Non-Iron Shirt
RH37
Tan



Nailhead
Non-Iron Blouse
RH47
Tan



Ladies Blazer
Navy
6525

Flat-Front Pant
2588
Vintage Khaki

Ladies Pant
Flat Front
8760
Vintage Khaki



Men's Blazer
Navy
3525

Men's
Gingham Shirt
Navy
8385

Ladies Blazer
Navy
3525

Ladies Blouse
Gingham
Ciel Blue
8385L

Pant
Flat Front
Vintage Khaki
2588



Verona Ss
Blouse
43612
Ciel Blue



Ladies Printed Blouse
Y neck
Alaskin Blue



Ladies A-Line Skirt
Navy Only 9745

Herney Bay Shirt Ls
41722
White/Turkish Blue



Men's Co
3525
Navy

Flat Front Pant
Navy
2525

s Coat



Ladies Verona Ls
Polyester
Navy



Ladies Floral Camp
Polyester
Blue

Ladies Capri
8760MC
Vintage Khaki



Shimmer
Tie Neck Blouse
Satin
Navy

Ladies
Tailored Short
8760MS
Vintage Khaki

Ladies Pleat Blouse
Cap Sleeve
Polyester
Ivory



Ladies 3/4 Sleeve
Blazer
Vintage Khaki
6760

Men's Blazer
Vintage Khaki
3760



Men's Luxury Shirt
Wrinkle free cotton
White

Ladies
Tailored Short
8760MS
Vintage Khaki



Flat Front Pant
Polyester
Vintage Khaki

Flat Front Pant
Vintage Khaki
2588

Men's Blazer
Navy
3525

Men's
Gingham Shirt
Navy Blue



Ladies Blazer
Navy
3525

Ladies
Gingham Shirt
Ciel Blue



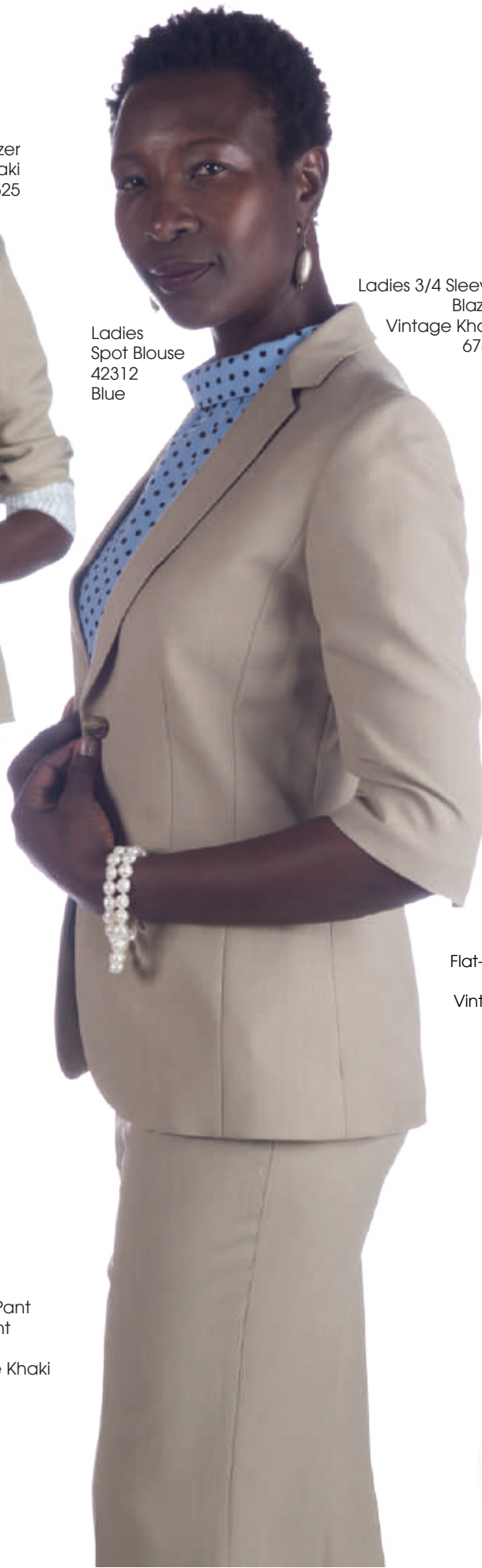
Ladies Flat Front Pant
8760
Vintage Khaki

Flat Front Pant
Vintage Khaki
2588





Ladies Blazer
Vintage Khaki
6525



Ladies
Spot Blouse
42312
Blue

Ladies 3/4 Sleeve
Blazer
Vintage Khaki
6760

Ladies Pant
Flat Front
8760
Vintage Khaki



Men's Suit Coat
3525
Vintage Khaki

Flat-Front Pant
2588
Vintage Khaki



Hibiscus Floral
Camp Shirt Ss
Blue
1036

Ladies Blazer
Vintage Khaki
6760



Herney Bay Shirt Ls
41722
White/Turkish Blue

Men's Suit Coat
3525
Navy

Ladies
Nautical Pant
8760M
Vintage Khaki





Single-Breasted Suit Coat
3525
Navy

Nailhead
Non-Iron Shirt
RH37
Teal Blue



Pocke Square
White Teal
CS8018T

Flat-Front Pant
2588
Vintage Khaki

in-stock
luxurious
PROGRAM

3/4-Sleeve Nailhead
Non-Iron Blouse
RH69
Teal Blue



Classic Skirt
9761
Vintage Khaki

Nailhead
Non-Iron Shirt
RH37
Teal Blue



Flat-Front Pant
2588
Vintage Khaki

Jewel Neck Dress
Polyester
Natural Stretch
Navy



Custom Tie Belt
Vintage Khaki
*comes with matching
belt

Male Resort Safari
20715
Natural



Pant
Flat Front
Navy
2525

Ladies Resort Dress
45715
Natural/Navy



notch collar DRESS



C
Notch Collar Dress
Scuba
Teal

C
Notch Collar Dress
Jersey Knit
Teal

wrap DRESS



Ask about
Color Options
on Custom
Dresses

3525



Men's Single Breasted Coat

6575



Ladies' Single Breasted Coat

6525



Ladies' Mid Length Coat

Home Laundry Easy Care

4525



Men's High Button Vest

7525



Ladies' Tunic Vest

7526



Ladies' High Button Vest

Natural Stretch

2525



Men's Flat Front Pant

9725



Ladies' Straight Skirt

9745



Ladies' A-Line Skirt



9925

Ladies' Jewel Neck Dress



8525 Ladies' Flat Front Pant
NO belt loops

8526 Ladies' Flat Front Pant
WITH belt loops



7525

9525

stylish features

Black

Steel Gray

Navy

A man and a woman are sitting on stone steps outdoors. They are both wearing beige suit separates. The man is on the left, wearing a light blue shirt and a patterned tie. The woman is on the right, also wearing a light blue shirt and a patterned tie. They are both smiling and looking at a smartphone held by the woman. The background shows a building with stone columns and steps.

INTAGLIO MICROFIBER SUIT SEPARATES
WITH REPREVE® RECYCLED FIBERS



3760

Men's Single-Breasted Suit Coat



6760

Ladies' Single-Breasted Suit Coat



079 207

2588

Men's Flat-Front Pant

010 079 207



079 207

8760

Ladies' Flat-Front Pant

010 079 207



9761

Ladies' Straight Skirt

079 207

REPREVE



Easy Care



Natural Stretch



Home Launder

Features:

- Fabric is washable with intaglio cross hatch weave
- Men's Suit Coat: notched narrow lapel with two-button closure, two lower flap pockets and one upper welt pocket, single vent in back, Polyester striped lining in sleeves, fully lined
- Ladies' Suit Coat: longer silhouette rests at low hip, front princess seams, welt front pockets, Polyester striped lining in sleeves, fully lined
- Pants: straight fit, button and hook-and-eye closure with nylon zipper, tall sizes
- Men's Pant: easy fit waistband, two front and back pockets

- Ladies' Pant: mid-rise to sit below natural waist, two front pockets
- Ladies' Skirt: contoured waistband, rear kick pleat, back hidden zipper, fully lined
- 77% Regular Polyester/23% Recycled Polyester, 5.7 oz.

COLORS:

010 Black (pants only), 079 Steel Grey, 207 Vintage Khaki

SIZES:

Suit Coat: Men's 36-58, even sizes only (Short, Regular, Long); Ladies' 0-28

Pant: Men's 28-54; Ladies' 0-28

TRANS- SEASONAL STYLE

Wool Stretch is the natural choice for comfortably stylish suiting. With a mix of **43% Wool, 55% Polyester and 2% Elastane**, the Wool Stretch range is easy care, providing year round comfort in any climate.

easy care
poly/wool
STRECH




LADIES JACKETS & VESTS

easy care
poly/wool
STRECH



easy care
poly/wool
STRECH





*Indulge in
soft edges and
beautifully draped
wool stretch.*

easy care
poly/wool
STRECH



Peaked vest
Knitted back



easy care
poly/wool
STRECH



Black

Navy

Charcoal

LADIES DRESSES



easy care
poly/wool
STRECH



Black

Navy

Charcoal

LADIES PANTS



easy care
poly/wool
STRECH

14017

Relaxed waist
Slim leg

Ladies Slim Leg Pant

14017 Ladies (0 - 16)

- 55% Polyester, 43% Wool, 2% Elastane
- 2% Elastane
- Slim leg tapers into ankle
- Features split at finished length for comfort
- Finished leg position will vary according to each individual's height
- Shaped to fit body measurements

Colors: Black, Navy, Charcoal

Ladies Relaxed Fit Pant

14011 Ladies (0 - 22)

- 55% Polyester, 43% Wool, 2% Elastane
- Mid-rise pant
- Comfortable fit and suits most body shapes
- Waistband sits comfortably just below the navel
- Pockets are horizontal on the front with one pocket on the rear

Ladies Hipster Pant

14012 Ladies (0 - 22)

- 55% Polyester, 43% Wool, 2% Elastane
- Mid-rise pant
- Comfortable fit and suits most body shapes
- Waistband sits comfortably just below the navel
- Pockets are horizontal on the front with one pocket on the rear

Ladies Piped Band Pant

14016 Ladies (0 - 22)

- 55% Polyester, 43% Wool, 2% Elastane
- Mid rise
- Modern wide piped waistband
- Deep side pockets
- One back inset pocket

Ladies Adjustable Wasit Pant

14015 Ladies (0 - 22)

- 55% Polyester, 43% Wool, 2% Elastane
- Mid rise
- Concealed adjustable waist
- Deep side pockets
- Shaped to fit body measurements

Colors: Black, Navy, Charcoal



Relaxed waist
Mid rise

14011

Black

Navy

Charcoal

LADIES PANTS

35

Tailored Collection



easy care
poly/wool
STRECH



Black

Navy

Charcoal

toll free 888.252.4411 online www.lanville.com

LADIES SKIRTS

24015

Straight skirt
Multi-pleats

24016

Wide waistband
with pleat detail
Pencil line

Ladies Waisted Pencil Skirt

24016 Ladies (0 - 22)

- 55% Polyester, 43% Wool, 2% Elastane
- Skirt position is natural waist and length is below the knee
- Split in the back for ease of movement
- Concealed zip for quality finish
- Feature pleats over top of waistband
- Shaped to fit body measurements

Colors: Black, Navy, Charcoal

24013

Relaxed waist
3/4 length

Black

Navy

Charcoal



Relaxed waist
Below knee

easy care
poly/wool
STRECH

Ladies Multi Pleat Skirt

24015 Ladies (0 - 22)

- 55% Polyester, 43% Wool, 2% Elastane
- Box pleats in rear for modern look and comfort
- Belt loops
- Deep side pockets
- Knee length

Ladies Fluted Skirt

24013 Ladies (0 - 22)

- 55% Polyester, 43% Wool, 2% Elastane
- 3/4 Length
- Skirt position is natural waist and length is below the knee
- Concealed zip for quality finish
- Internal waist band pocket
- Cut on bias for fluted effect and ease of movement

Ladies Relaxed Skirt

24011 Ladies (0 - 22)

- 55% Polyester, 43% Wool, 2% Elastane
- Skirt position is on the hip and the finished length will be below the knee
- Alternatively, change size and wear on natural waist and the finished length will be on the knee
- Split in back hem adds ease of movement
- Concealed zip creates a quality finish

Colors: Black, Navy, Charcoal



Chevron waistband
Above knee

24014

Ladies Chevron Skirt

24014 Ladies (0 - 22)

- 55% Polyester, 43% Wool, 2% Elastane
- Split in the back for ease of movement
- Concealed zip for quality finish
- Features decorative detailed waistband

Colors: Black, Navy, Charcoal

MENS JACKETS & VESTS

NEW STYLE

Mens Slim Fit Jacket

84013 Mens (34R - 50R)

- 55% Polyester, 43% Wool, 2% Elastane
- Slim Fit style for a modern look
- Features a narrower lapel with higher notch point on the lapel
- Two rear vents and contrast lining piping

Mens 2 Button Jacket

84011 Mens (34R - 56R)

- 55% Polyester, 43% Wool, 2% Elastane
- Under arm comfort pads
- 3 Internal pockets - 2 on the left and a security pocket on the right
- Lining with silver piping trim
- Embroidery zip
- Double vented at the rear with fully functional outer pockets

Mens Longline Vest

94012 Mens (34R - 56R)

- 55% Polyester, 43% Wool, 2% Elastane
- Hip length
- 5 Button front
- Self-fabric back
- Embroidery zip
- Functional external pockets

Colors: Black, Navy, Charcoal

Mens Peaked Vest

94011 Mens (34R - 56R)

- 55% Polyester, 43% Wool, 2% Elastane
- Stretch knit cotton back
- Fully functional front pockets

Colors: Black, Navy, Charcoal

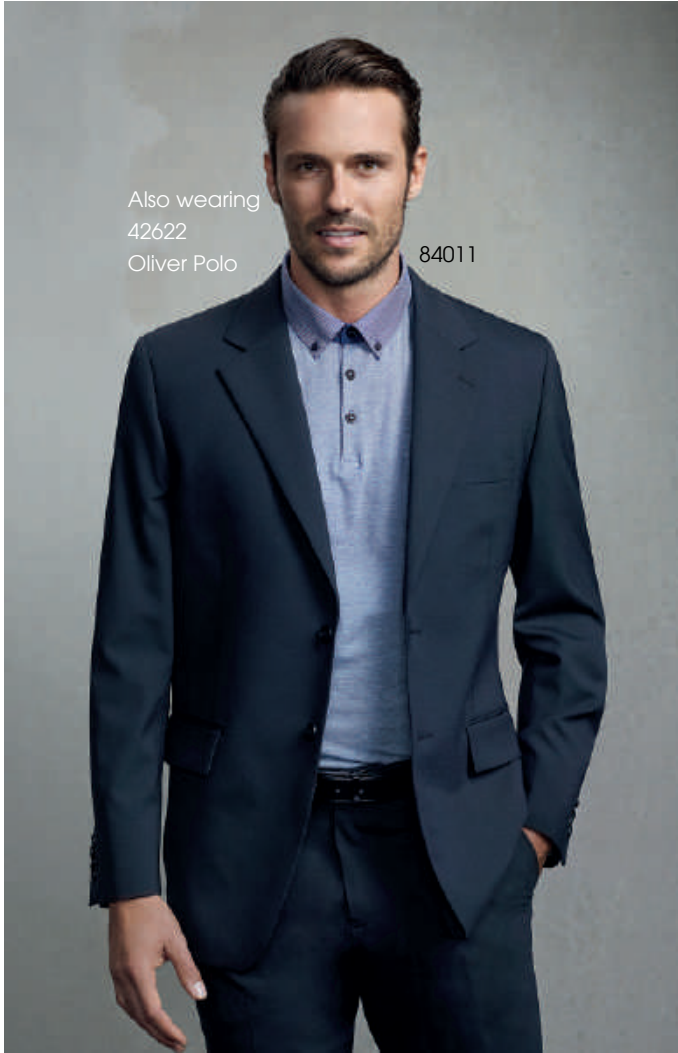
84013

easy care
poly/wool
STRECH

Also wearing
74013 Slimline Pant,
40320 Hudson LS Shirt,
99104 Slim Tie

Also wearing
42622
Oliver Polo

84011



Black

Navy

Also wearing
74013 Slim Fit Pant,
40120 Fifth Ave LS Shirt,
99101 Self Stripe Tie

94012



Charcoal

Timeless dark suits in modern cuts and wool stretch fabrics.

94011

Also wearing
42520 Newport
LS Shirt

Peaked vest
Knitted back



MENS PANTS



Mens Slim Fit Pant

74013 Mens (28R - 44R)

- 55% Polyester, 43% Wool, 2% Elastane
- Flat front and tapered leg
- Slimmer leg & Slim Fit style for a modern look

Colors: Black, Navy, Charcoal



Mens One Pleat Pant

74011 Mens (28R - 48R)

- 55% Polyester, 43% Wool, 2% Elastane
- Small front pleat
- Waist band has stretch fusing which will give a little stretch and add comfort to the wearer
- Internal security pocket on the inside right hand pocket and has two rear pockets

Colors: Black, Navy, Charcoal



Mens Flat Front Pant

74012 Mens (28R - 48R)

- 55% Polyester, 43% Wool, 2% Elastane
- The Flat Front Pant has all the features of the One Pleat pant, but just a slimmer flat front appearance
- Waist band has some stretch for comfort
- Internal security pocket on the inside right hand pocket and has two rear pockets

Colors: Black, Navy, Charcoal

Timeless dark suits in modern cuts and wool stretch fabrics.

easy care
poly/wool
STRECH

Black

Navy

Charcoal

easy care
poly/wool
STRECH



74014

Adjustable waist
Straight leg

Mens Adjustable Waist Pant

74014 Mens (28R - 50R)

- 55% Polyester, 43% Wool, 2% Elastane
- Hidden elastic waist band through the side
- A 'roomier' mid-rise and deep side pockets ideal for Health Care Workers
- Finished leg sits over the shoe
- Fits the same as the One Pleat and Flat Front Pants

Colors: Black, Navy, Charcoal

Black

Navy

Charcoal



easy care
poly/bamboo
BREATHABLE

CLASSIC APPEAL

Cool Stretch is at the forefront of design and fabric technology, with a unique mix of **92% polyester and 8% bamboo** charcoal. Breathable, easy care fabric with figure-flattering lines ensure you have the best available business wear.

LADIES JACKETS & VESTS

Shake up a dark Color palette with the pop of a vibrant hue.



easy care
poly/bamboo
BREATHABLE

45

Tailored Collection



toll free 888.252.4411 | online www.jauniforms.com

LADIES JACKETS & VESTS

Ladies Sleeveless Jacket

60114 Ladies (0 - 22)

- 92% Polyester 8% Bamboo Charcoal
- Internal mobile pocket & embroidery access
- Classic lapels w/ one button closure
- Two lower diagonal besom pockets
- Feminine Silhouette

Ladies Peaked Vest

50111 Ladies (0 - 22)

- 92% Polyester 8% Bamboo Charcoal
- Stretch knit back for a perf fit
- Six button closure
- Fully lined with two front besom pockets

Colors: Black, Navy, Charcoal

60114

easy care
poly/bamboo
BREATHABLE



Black

Navy

Charcoal

easy care
poly/bamboo
BREATHABLE

LADIES DRESSES



Black

Navy

Charcoal

DRESSES FOR SUCCESS



easy care
poly/bamboo
BREATHABLE

Black

Navy

Charcoal

LADIES PANTS

Ladies Slim Leg Pant

10117 Ladies (0 - 16)

Black

- 92% Polyester 8% Bamboo Charcoal
- Slim leg tapers into ankle
- Features split at finished length for comfort
- Finished leg position will vary according to each individual's height
- Shaped to fit body measurements

Colors: Black, Navy, Charcoal



Ladies Hipster Fit Pant

10112 Ladies (0 - 20)

- 92% Polyester 8% Bamboo Charcoal
- Low Rise
- Medium wide leg
- Wide side seams for easy alteration

Colors: Black, Navy, Charcoal

Navy

Charcoal



easy care
poly/bamboo
BREATHABLE



Ladies Bootleg Pant

10114 Ladies (0 - 22)

- 92% Polyester 8% Bamboo Charcoal
 - Relaxed waist
 - Bootleg styling
 - Horizontal front pockets
 - One back besom pocket
 - Rear waist alteration facility
- Colors: Black, Navy, Charcoal

Relaxed waist
Bootleg style

10114

Black

Navy

Charcoal

Ladies Piped Band Pant

10116 Ladies (0 - 22)

- 92% Polyester 8% Bamboo Charcoal
- Mid rise, Modern wide piped waistband
- Deep side pockets & One back inset pocket

Ladies Relaxed Fit Pant

10111 Ladies (0 - 22)

- 92% Polyester 8% Bamboo Charcoal
- Mid-rise pant with relaxed waist
- Horizontal front pockets & One back pocket

Colors: Black, Navy, Charcoal

Higher waist
Piping detail

10116



Relaxed waist
Mid rise

10111

Ladies Adjustable Waist Pant

10115 Ladies (0 - 26)

- 92% Polyester 8% Bamboo Charcoal
- Mid rise with Concealed adjustable waist
- Deep side pockets
- Shaped to fit body measurements

Colors: Black, Navy, Charcoal



10115

Adjustable waist
Mid rise



10118

Adjustable waist
Mid rise

easy care
poly/bamboo
BREATHABLE

Ladies Louise Pant

10118 Ladies (0 - 26)

- 92% Polyester 8% Bamboo Charcoal
- 7/8th Pant with side split on leg opening
- Concealed adjustable waist
- Hidden phone pocket and key loop
- Shaped to fit body measurements

Ladies Louise Pant

10113 Ladies (0 - 26)

- 92% Polyester 8% Bamboo Charcoal
- Fully pull on pant
- Deep side pockets
- Tapered leg

Colors: Black, Navy, Charcoal



10113

Elastic waist
Mid rise

Black

Navy

Charcoal

easy care
poly/bamboo
 BREATHABLE



Ladies Adjustable Waist Short

10119 Ladies (0 - 26)

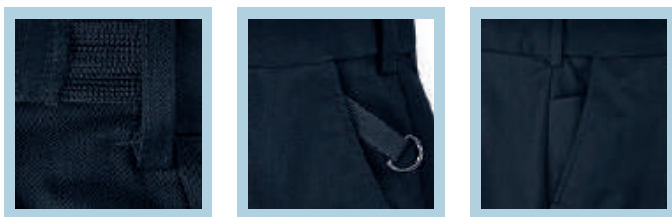
- 92% Polyester 8% Bamboo Charcoal
- Straight leg allows for ease of movement
- Concealed adjustable waist
- Hidden phone pocket and key loop
- Shaped to fit body measurements

Ladies Maternity Pant

10100 Ladies (0 - 26)

- 92% Polyester 8% Bamboo Charcoal
- Soft front expandable rib for maximum comfort
- Mid-rise with a straight leg

Colors: Black, Navy, Charcoal



Louise Pant and Shorts feature adjustable waist, key loop and extra side pocket

LADIES SKIRTS

easy care
poly/bamboo
BREATHABLE

Ladies Relaxed Skirt

20111 Ladies (0 - 22)

- 92% Polyester 8% Bamboo Charcoal
- Starts on the hip and ends below knee
- Alternatively, change size and wear on natural waist and the finished length will be on the knee
- Split in back hem adds ease of movement
- Concealed zip creates a quality finish

Colors: Black, Navy, Charcoal



Relaxed waist
Below knee

20111

Ladies Fluted Skirt

20113 Ladies (0 - 22)

- 92% Polyester 8% Bamboo Charcoal
- 3/4 Length
- Skirt position is natural waist and length is below the knee
- Concealed zipper
- Internal waist band pocket
- Cut on bias for fluted effect and ease of movement

Colors: Black, Navy, Charcoal



Relaxed waist
3/4 length

20113

Ladies Bandless Skirt

20112 Ladies (0 - 22)

- 92% Polyester 8% Bamboo Charcoal
- A neat, basic little straight skirt with no waistband or pockets
- Darted front and back with a rear split
- Finished length is just a little longer than the Chevron

Colors: Black, Navy, Charcoal



Bandless waist
Above knee

20112



Ladies Multi-Pleat Skirt

20115 Ladies (0 - 22)

- 92% Polyester 8% Bamboo Charcoal
- Box pleats in rear for modern look and comfort
- Belt loops
- Deep side pockets
- Knee length

Colors: Black, Navy, Charcoal

— Straight skirt —
— Multi-pleats —

20115

Ladies Waisted Pencil Skirt

20116 Ladies (0 - 16)

- 92% Polyester 8% Bamboo Charcoal
- Skirt position is natural waist and length is below the knee
- Split in the back for ease of movement
- Concealed zip for quality finish
- Feature pleats over top of waistband
- Shaped to fit body measurements

Ladies Chevron Skirt

20114 Ladies (0 - 22)

- 92% Polyester 8% Bamboo Charcoal
- Split in the back for ease of movement
- Concealed zip for quality finish
- Features decorative detailed waistband
- Shaped to fit body measurements

Colors: Black, Navy, Charcoal



20116

— Wide waistband with pleat detail —
— Pencil line —



20114

— Chevron waistband —
— Above knee —

Black

Navy

Charcoal

MENS JACKETS & VESTS

Mens 2 Button Jacket

80111 Mens (34R - 56R)

- 92% Polyester 8% Bamboo Charcoal
- Under arm comfort pads
- 3 Internal pockets - 2 on the left and a security pocket on the right
- Lining with silver piping trim
- Embroidery zip
- Double vented at the rear with fully functional outer pockets

Colors: Black, Navy, Charcoal

80111

easy care
poly/bamboo
BREATHABLE

Mens Slim Fit Jacket

80113 Mens (34R - 56R)

- 92% Polyester 8% Bamboo Charcoal
- Slimline style and fit creates a fashionable modern look
- Features a narrower lapel with higher notch point on the lapel
- Two rear vents and contrast lining piping

Colors: Black, Navy, Charcoal

80113

easy care
poly/bamboo

SLIM-FIT

Black

Navy

Charcoal

*Breathing new
life into old
favourites with
a knitted back
for ease of
movement.*

Also wearing
41810
Herne Bay
LS Shirt

Peaked Vest
Knitted Back

Also wearing
70112
Flat Front Pant

easy care
poly/bamboo
BREATHABLE



Mens Longline Vest

90112 Mens (34R - 56R)

- 92% Polyester 8% Bamboo Charcoal
- Hip length
- 5 Button front
- Self-fabric back
- Embroidery zip
- Functional external pockets
- Shaped to fit body measurements

Colors: Black, Navy, Charcoal

Also wearing 90112
42520
Newport LS Shirt

Also wearing
70112
Flat Front Pant



Also wearing
40120
Fifth Avenue LS Shirt,
99102
Single Contrast Stripe Tie

Pleat front
Straight leg

70111

easy care
poly/bamboo
BREATHABLE

Mens Flat Front Pant

70112 Mens (28R - 44R)

- 92% Polyester 8% Bamboo Charcoal
- Flat Front for a slimmer appearance
- Waist band has stretch fusing
- Two front pocket and two rear pockets

Colors: Black, Navy, Charcoal



Also wearing
41810
Herne Bay LS Shirt
80111 2 Button Jacket

Flat front
Straight leg

70112

MENS PANTS

Mens One Pleat Pant

70111 Mens (28R - 44R)

- 92% Polyester 8% Bamboo Charcoal
- Small front pleat
- Waist band has stretch fusing which will give a little stretch and add comfort to the wearer
- Internal security pocket on the inside right hand pocket and has two rear pockets

Colors: Black, Navy, Charcoal



Black



Navy



Charcoal

Also wearing
42520
Newport LS Shirt
A59520 Veresa Pullover



70114

Adjustable waist
Straight leg

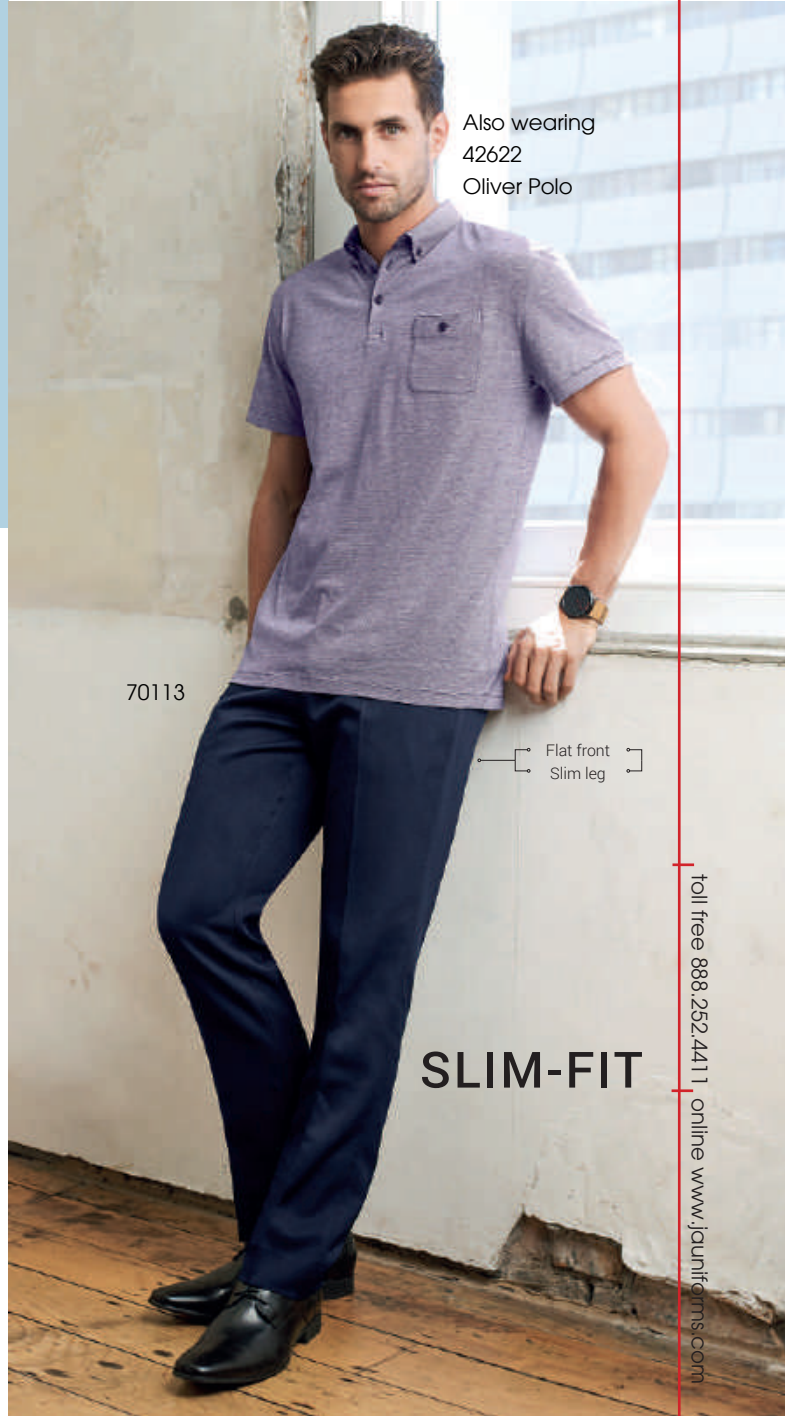
Mens Adjustable Waist Pant

70114 Mens (28R - 40R)

- 92% Polyester 8% Bamboo Charcoal
- Hidden elastic waist band through the side
- A 'roomier' mid-rise and deep side pockets ideal for Health Care Workers
- Finished leg sits over the shoe
- Fits the same as the One Pleat and Flat Front Pants

Colors: Black, Navy, Charcoal

Also wearing
42622
Oliver Polo



70113

Flat front
Slim leg

SLIM-FIT

Mens Slim Fit Pant

70113 Mens (28R - 44R)

- 92% Polyester 8% Bamboo Charcoal
 - Flat front and tapered leg
- More contemporary slimmer leg

Colors: Black, Navy, Charcoal

tailored COLLECTION

*Luxury tailored clothing
designed with a sophisticated
sense of style.*

Double Black



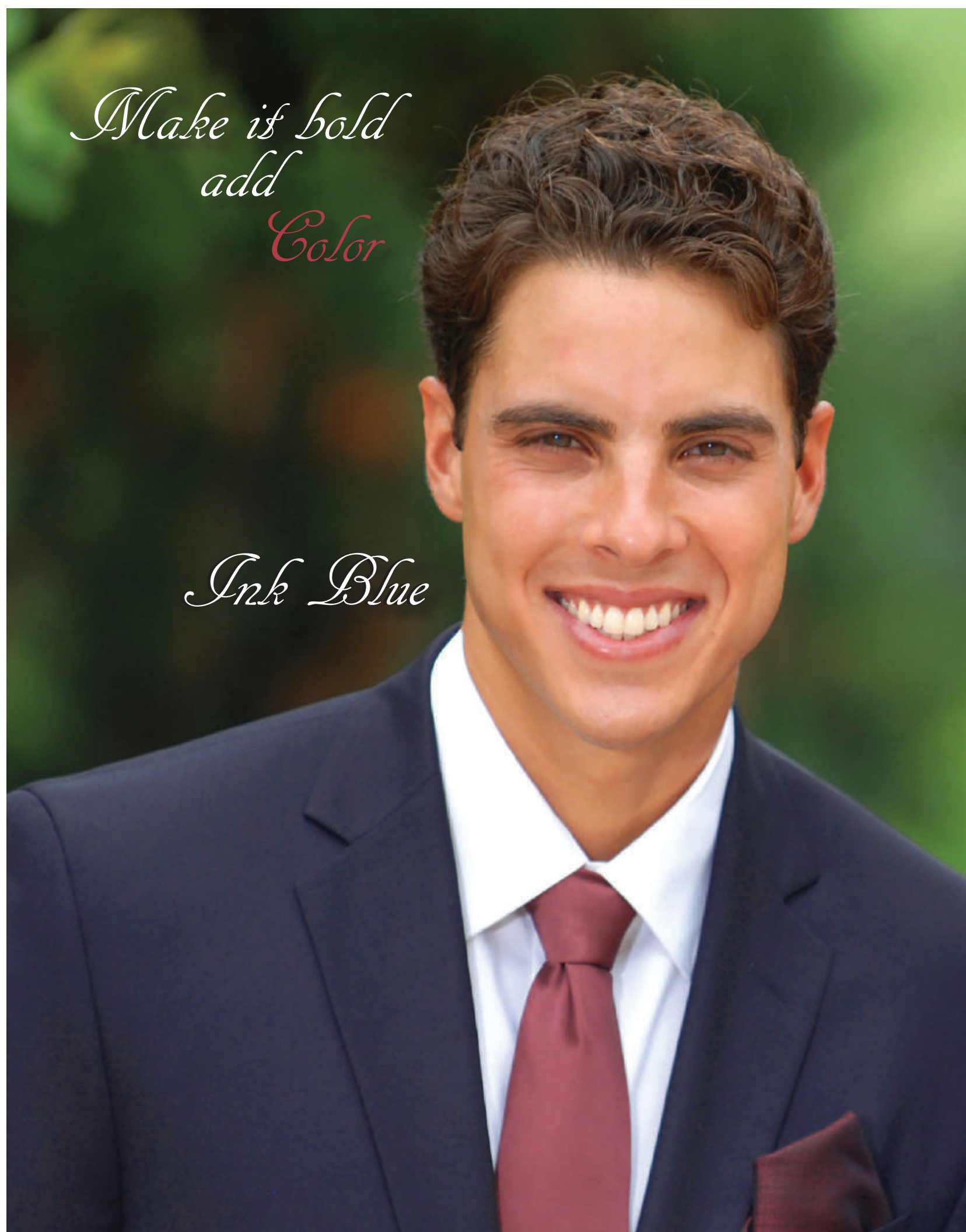
*J.A. uniforms is shaped
by its sense of style, innovation,
fine quality, personal service,
and exceptional value in our products.*

Reaction Gray



*Make it bold
add
Color*

Ink Blue





*Extreme
Black
is the new
Black*

Camila Jacket
42605 Ladies (2-24)

- Notch collar
- Short Jacket
- No pockets, no closure
- 50/50 Wool/Polyester blend
- Wrinkle resistant
- A smooth lining
- Dry Clean

Colors: Double Black, Reaction Gray,
Ink Blue

NEW



42605

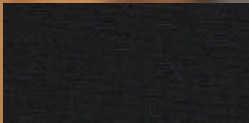


Brescia Jacket 42333 Ladies (2-24)

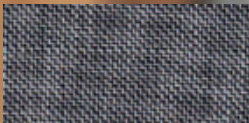
- Contoured collarless jacket
- Asymmetrical placket with no closure
- Two exterior inset pockets
- 50/50 Wool/Polyester blend
- Wrinkle resistant
- A smooth lining
- Dry Clean

Colors: Double Black, Reaction Gray, Ink Blue

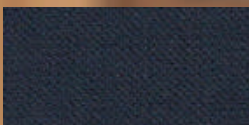
NEW
42333



Double Black



Reaction Gray



Ink Blue



Brescia Jacket Custom Satin



worn with
Straight Skirt
1343
shown page 18

Ava Dress

45212 Ladies (XS-2X)

- Jewel neck collar with "V" vent
- 50/50 Wool/Polyester blend
- Wrinkle resistant
- A smooth lining
- Princess seams
- Sleeveless with back hidden zipper

Colors: Double Black, Reaction Gray, Ink Blue

Additional colors are available made in the 100% polyester

NEW



45212

NEW

11170

Kenneth Jacket

11170 Men's (36-54)

- Modern fit jacket
- Notched lapel
- Four exterior pockets & three interior pockets
- Cuff: Mitered sleeve vent
 - Double vented back
 - 50/50 Wool/Polyester blend
 - Wrinkle resistant
 - A smooth lining
 - Dry Clean

Colors:
Double Black,
Reaction Gray,
Ink Blue

worn with
Kenneth Trouser
12180
shown page 18

luxurious fabric
WRINKLE RESISTANT

Dress it up with Ink Blue

Abigail Dress
45215 Ladies (XS-2X)

- Fang collar
- 50/50 Wool/Polyester blend
- Wrinkle resistant
- A smooth lining
- Princess seams
- Sleeveless with back hidden zipper
- Bottom hem has vents details
- Dry Clean

Colors: Double Black,
Reaction Gray, Ink Blue

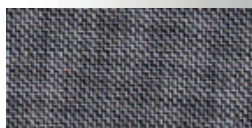
NEW



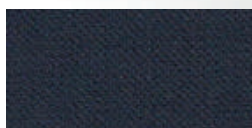
45215



Double Black



Reaction Gray



Ink Blue

luxurious fabric
WRINKLE RESISTANT

Kenneth Jacket
11170
shown page 10

NEW



Ava Dress
45212
shown page 10

worn with
Kenneth Trouser
12180
shown page 18

Iconic

- *luxurious*
- *bold*
- *exclusive*
- *lightweight*
- *wrinkle resistant*
- *retail inspired*

Brescia
Jacket
42333
shown page 9



worn with
Lorena Trouser
422230
shown page 19

Ava Dress



45212
shown page 17

Kenneth Jacket

11170
shown page 10





L545

Moonlight
Blue

Black

Gray
Smoke

224490

Concept Cardigan

L545 Ladies (XS-4X)

- 4.4-ounce, 62/33/5 poly/rayon/spandex
- Tag-free label
- Open Y-neck
- 9-button cardigan placket with dyed-to-match buttons

Tailored Vest

224490 Mens (S-4X)

- V-neckline with button placket
- Tailored fit, V-notch bottom detail
- Two functional welt front pockets
- Lining back with adjustable back strap
- Fully lined
- Custom made

Colors: Double Black, Reaction Gray, Ink Blue

layers accessorize
CARDIGAN & VEST

Klein Jacket

45439 Ladies (2-24)

NEW



- Simple tailored collar with notch
- Semi Fitted
- Two Piece Sleeve with vent
- Welt pockets
- 50/50 Wool/Polyester blend
- Wrinkle resistant
- A smooth lining
- Dry Clean

Colors: Double Black, Reaction Gray, Ink Blue



Double Black



Reaction Gray



Ink Blue



worn with
Ava Dress
45212



NEW



worn with
Rebecca Ruffle
Blouse
2434

worn with
Lorena Trouser
422230
shown page 19

Ava Dress

45212 Ladies (XS-2X)

NEW

- Jewel neck collar with "V" vent
- 50/50 Wool/Polyester blend
- Wrinkle resistant
- A smooth lining
- Princess seams
- Sleeveless with back hidden zipper
- Dry Clean



Colors: Double Black, Reaction Gray, Ink Blue



Reaction Gray Works

luxurious fabric
WRINKLE RESISTANT

Kenneth Jacket

11170 Men's (36-54)

- Modern fit jacket
- Notched lapel
- Four exterior pockets & three interior pockets
- Cuff: Mitered sleeve vent
- Double vented back
- 50/50 Wool/Polyester blend
- Wrinkle resistant
- A smooth lining
- Dry Clean



NEW

11170

worn with
Meredith
Blouse
LB757

12180



1343

Straight Skirt NEW
1343 Ladies (2-24)

- 50/50 Wool/Polyester blend
- Classic dress skirt
- Straight style with two front darts
- No pockets, back button closure, nylon zipper
- Rear kick pleat, fully lined
- 25" skirt length
- Dry Clean

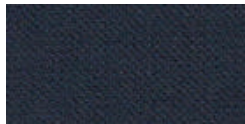
Colors: Double Black, Reaction Gray, Ink Blue



Double Black



Reaction Gray



Ink Blue

luxurious fabric
WRINKLE RESISTANT

Kenneth Trouser NEW
12180 Mens (28-44)

- Modern fit cut
- Flat front trousers
- 50/50 Wool/Polyester blend
- Wrinkle resistant
- Two front angle pockets
- Two back pockets
- Lined to knee
- Hemmed at 30 or 32
- Dry Clean

Colors: Double Black, Reaction Gray, Ink Blue



*Beautifully
tailored with
a fluid drape*

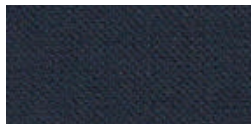
422230



Double Black



Reaction Gray



Ink Blue

Lorena Trouser **NEW**
422230 Ladies (2-24)

- Mid rise waistband
- Flat front trousers
- 50/50 Wool/Polyester blend
- Wrinkle resistant
- Finished hook & eye closure
- Belt loops and back darts
- Two front angle pockets
- One back pockets
- 32" inseam
- Dry Clean

Colors: Double Black, Reaction Gray, Ink Blue



55/45
POLY/WOOL

Charcoal
Pinstripe
(discontinued)

Navy Pinstripe

Pinstripe
3660

Pinstripe
6660



Single Breasted Suit Coat

3660 Men's (36-54)
6660 Ladies (0-28)

Classic tailoring in a pinstripe coat

- 55/45 poly/worsted wool
- Three button front closure
- Welt breast pocket
- Two in-set pockets with flaps
- Two inside pockets (Ladies has one)
- Center back vent for men
- Fully lined
- Dry clean

Colors: Charcoal Pinstripe (while supplies last),
Navy Pinstripe

Pinstripe Pants & Skirt

Men's Flat Front Pant #2560 (28-54)
Ladies Flat Front Pant #8569 (0-28)
Ladies Straight Skirt #9769 (0-28)
Refer to page 23 for images.

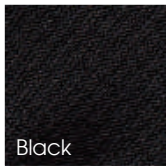
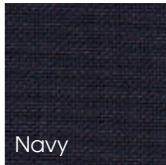
Pinstripe

Dress Vest

4680 Men's (S-5X)
7680 Ladies (XS-3X)

- 55/45 poly/worsted wool
- Five button front closure
- Two in-set pockets
- Self fabric back
- Fully lined
- Dry clean

Colors: Navy, Black, Charcoal



55/45
POLY/WOOL





Men's Suit Coat

Men's #3680

(36-54)

- 55/45 poly/worsted wool
- Fully lined
- Set-in pockets with flaps
- Two inside pockets
- Short, Regular and Tall

Ladies Single Notch Jacket

Ladies #6680

(0-28)

- 55/45 poly/worsted wool
- Fully lined
- Set-in pockets with flaps
- One inside pockets

Men's Dress Pants

Flat Front Pant #2780

(28-54)

Pleated Front Pant #2680

(28-54)

- 55/45 poly/worsted wool
- Two front pockets
- Two set-in back pockets
- Extended fly lining
- Hook and eye closure
- Nylon zipper
- Tall sizes available

Ladies Dress Pants & Straight Skirt

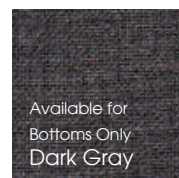
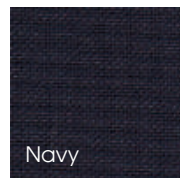
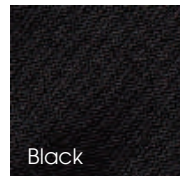
Straight Skirt 9789

(0-18 Reg & 18W-28W)

Flat Front Pant 8783

(0-18 Reg & 18W-28W)

- Flat front dress pants
- Hook and eye closure
- Nylon zipper
- Two front pockets
- Tall sizes (pants only)
- Straight skirt with no pockets
- Button closure
- Nylon zipper
- Skirt, rear kick pleat and fully lined



55/45
POLY/WOOL



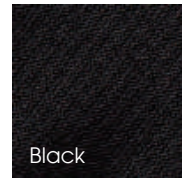
Men's
Flat front dress pant
2780



Men's
Pleated front dress pant
2680



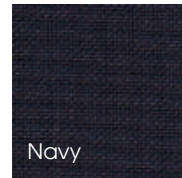
Men's Vest
4680



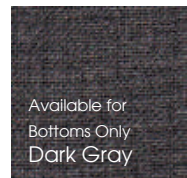
Black



Charcoal



Navy



Available for
Bottoms Only
Dark Gray

55/45
POLY/WOOL



Straight Skirt
9789



Ladies
Flat front dress pant
8783



Ladies Vest
7680

classic
TAILORING



tropi COAT

17 COLORS

Polyester Blazers

2211C Ladies (2-28)
2011C Men's (34-64)

- 100%Polyester, fully lined with inside pockets.
- Single breasted notch lapel with top stitching and patch pockets
- 2 Button Blazer
- Machine washable, water repellent finish

Colors: Maroon, Hunter, Gray, Navy, Red, Black, Purple, Kelly Green, Gold, Powder Blue, Augusta Green, White (ladies only), Orange, Royal Blue, Camel (Beige), Coffee Brown, Pink



2211C

- Maroon
- Hunter
- Gray
- Navy
- Red
- Black
- Purple
- Kelly Green
- Gold
- Powder Blue
- Augusta Green
- White
ladies only
- Orange
- Royal Blue
- Camel
(Beige)
- Coffee
Brown
- Pink

100% Polyester
TROPICAL WEIGHT



2011C

Shown with:
2226P Ladies
Polyester Plain Front
low rise trouser

Polyester Cardigan Blazers

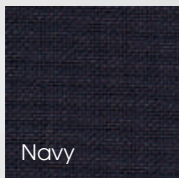
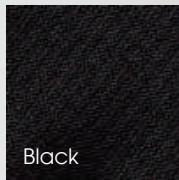
2215C Ladies (2-28)

- Cardigan blazer
- One decorative gold button closure
- Feminine silhouette
- Machine washable
- Water repellent finish
- 100% polyester year around fabric
- Fully lined with inside pockets

Colors: Black, Navy

100% Polyester
TROPICAL WEIGHT

2215C



Shown with:
Ladies Polyester
Straight Skirt #2897S

J
uniforms
STYLE
GUIDE



**TRUST
BUILT
VISUALLY**

J.A. Uniforms
12323 S.W. 132 Court Miami, Fl 33186
T 305.234.1231 F 305.234.1219
www.jauniforms.com