



Iso Analytics, Inc.

6135 NW 167 Street
Suite E 15
Miami Lakes, FL 33015
(954) 378-2517

ISO ANALYTICS testing@isoanalytics.com



Analysis Report

Client Mellow Fellow

Batch # 22122202010220

Test Reg State Florida

Batch Date 5/2/2022

Production Facility Delcann Oils

Extracted from CBD

Production Date 5/3/2022

Sample Name Delta 8 Double Dream Disposable

Order Date 5/3/2022

Sample Type Inhalable

Date Received 5/9/2022

Sample ID IA-68231

Lab Batch Date 5/9/2022

Date Completed 5/11/2022

Potency Summary

| | |
|--------------------------------|---------------------------------|
| Total Delta 8 88.40% | Total THC None Detected |
| Total Delta 9 None Detected | Total Delta 10 None Detected |
| Total CBG None Detected | Total CBD None Detected |
| Total CBN None Detected | Total Cannabinoids 88.40% |



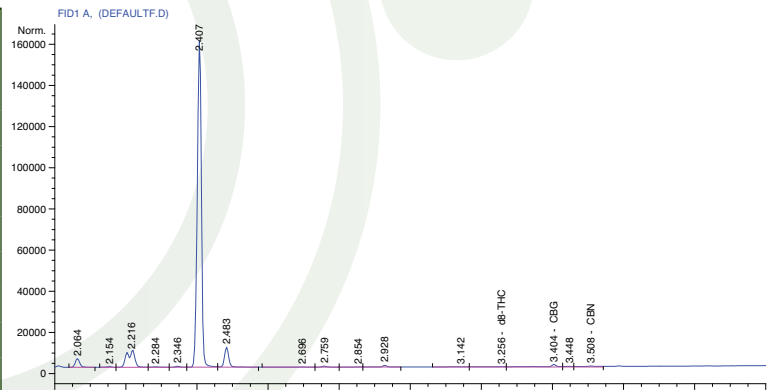
Product Image

Cannabinoid Profile Tested by GC/FID

Potency 12 Test

| Analyte | LOD % | LOQ % | Result (mg/g) | Result (%) |
|---------|-------|-------|---------------|------------|
| Δ8-THC | 0.000 | 0.001 | 884 | 88.4 |
| Δ9-THC | 0.000 | 0.001 | 0.000 | <LOQ |
| Δ10-THC | 0.000 | 0.001 | 0.000 | <LOQ |
| Δ8-THCO | 0.000 | 0.001 | 0.000 | <LOQ |
| HHC | 0.000 | 0.001 | 0.000 | <LOQ |
| CBC | 0.000 | 0.001 | 0.000 | <LOQ |
| CBD | 0.000 | 0.001 | 0.000 | <LOQ |
| THCV | 0.000 | 0.001 | 0.000 | <LOQ |
| THCA-A | 0.000 | 0.001 | 0.000 | <LOQ |
| CBN | 0.000 | 0.001 | 0.000 | <LOQ |
| CBGA | 0.000 | 0.001 | 0.000 | <LOQ |
| CBG | 0.000 | 0.001 | 0.000 | <LOQ |
| CBDV | 0.000 | 0.001 | 0.000 | <LOQ |
| CBDA | 0.000 | 0.001 | 0.000 | <LOQ |

Chromatogram



ND = Not Detected; NT = Not Tested; LOD = Limit of Detection;
LOQ = Limit of Quantitation; RL = Reporting Limit; Δ = Delta;
Total Δ9-THC = Δ9-THCA * 0.877 + Δ9-THC; Total CBD = CBDA * 0.877 + CBD

ISO ANALYTICS, INC.

This sample has been tested by Iso Analytics, Inc. using valid testing methodologies and a quality system. Values reported relate only to the sample tested. Iso Analytics, Inc. makes no claims as to the efficacy, safety or other risks associated with any detected or non-detected levels of any compounds reported herein. This Report shall not be reproduced except in full, without the written approval of Iso Analytics, Inc.

Charles Louis, PhD
Chief Scientist
Iso Analytics, Inc.