

Remote Programming Guide

INS-C035

Important Safety instructions

Important Safety instructions

WARNING: To reduce the risk of severe injury or death, it is important to follow these instructions for personal safety. Save these instructions.

- Read and follow all installation instructions.
- This appliance can be used by children aged 8 years and above and persons with reduced physical, sensory or mental capabilities or lack of experience and knowledge if they have been given supervision or instruction concerning use of the appliance in a safe way and understand the hazards involved. Children should not play with the appliance. Cleaning and user maintenance should not be performed by children without supervision.
- Do not allow children to play with fixed controls. Keep remote controls away from children.
- Frequently examine the installation for imbalance and signs of wear or damage to cables and springs. Do not use if repair or adjustment is necessary.
- The drive must be disconnected from its power source during cleaning, maintenance and when replacing parts.
- The A-weighted emission sound pressure level of the drive is equal to or less than 70dB(A).
- Indoor and household use only.
- Disconnect the drive from the power supply or switch off the automatic controls when maintenance, such as window cleaning, is being carried out in the vicinity.
- When operating a biased switch, make sure that other persons are kept away.
- Do not operate when maintenance, such as window cleaning, is being carried out in the vicinity.
- The tube motor must only be supplied with safety extra low voltage corresponding to the marking on the appliance.
- This appliance contains batteries that are non-replaceable.

Cleaning

Follow these general rules when cleaning the outside of the device and its components:

Use a damp, soft, lint-free cloth. Avoid getting moisture in openings.

Do not use aerosol sprays, solvents, alcohol, or abrasives.

Service & Support

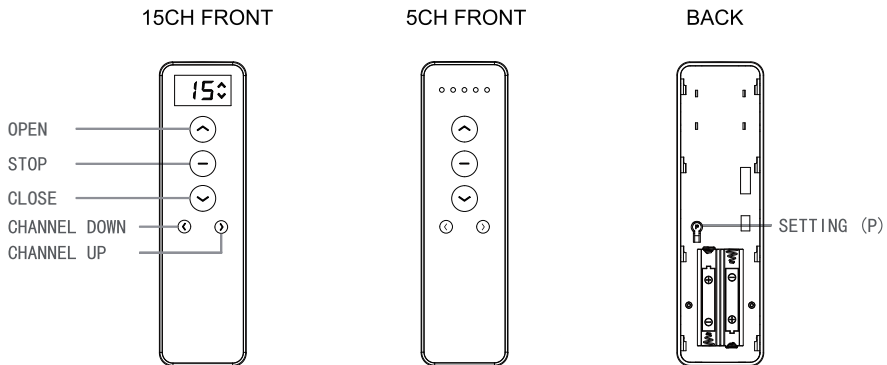
Do not perform repairs yourself. Do not attempt to open the device or disassemble it. You run the risk of electric shock and voiding the limited warranty. No user-serviceable parts are inside.

TABLE OF CONTENTS

Each battery motor from Smart will come preprogrammed from the factory. The preprogramming ensures the remote is paired with the motor, the upper and lower operation limits are set, the remote is unlocked.

1.Button Instructions.....	1
2.Pairing.....	2
3.Switch Rotating Direction (Optional).....	3
4.Setting Open and Close Limits	4
5.Favorite Positions	5
6.Adjust Limits.....	6
7.Pair / Unpair Additional Emitter.....	7
8.Deleting All Limits	8
9.Weak-current Switch Modes (Optional)	9
10.Run/Stop by Pulling Fabric	11
11.Speed Regulation	12
12.Reset to Factory Mode.....	13

Button Instructions



TECHNICAL SPECIFICATIONS	
Voltage:	3V
Frequency:	433.92 MHz
Transmitting Power:	30 milliwatt
Ambient Operating Temperature:	-10°C - 50°C
Transmission Distance:	Approx. 65 feet in open space
Battery:	AAA

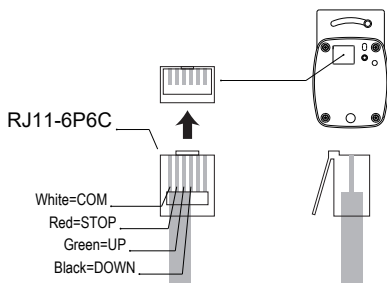
FEATURES

- Push Button controls
- Led Display
- Hide unused channels function
- Wall mount holder

PACKAGE CONTENTS

- Remote
- Wall mount holder & fixing screws
- 1.5V - AAA Battery 2 cells

(Optional)



Pairing

1. SELECT CHANNEL

1a

Press any button to wake remote.

1b

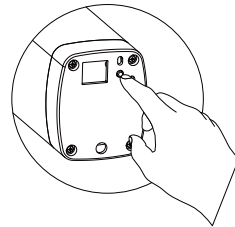
Within 10sec Press "**<**" or "**>**" to select desired channel.



2. PAIRING REMOTE TO MOTOR

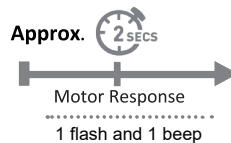
2a ACTIVATE PAIRING MODE ON MOTOR

Press & HOLD
Motor Button(2sec)



Activate Pairing Mode

Note: 1 flash and 1 beep



2b PAIRING REMOTE

Within 10 sec of activating pairing mode, Press & Hold **STOP**



Press **STOP** (2sec)

Note: 5 flashes and 3 beeps

If you do not pair the remote in time the motor pairing sequence will time out, repeat the above steps assuring to press and hold the STOP button within 10 seconds of the motor jog

Switch Rotating Direction (Optional)

Reverse Motor Direction If Required

Method one:

REMOTE OPERATION

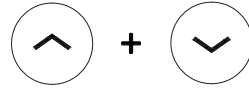
(Reversing motor direction using this method is only possible during initial set-up, prior to first time limit setting, or after a re-set of motor)

To check motor direction, quickly press the OPEN or CLOSE button to move the shade initially. Press STOP to pause the shade operation.

IF PRESS OPEN AND MOTOR IS CLOSED-Press and hold down the OPEN and CLOSE button simultaneously until the motor 5 flashes and 3 beeps.



Press and Hold OPEN + CLOSE (2sec)



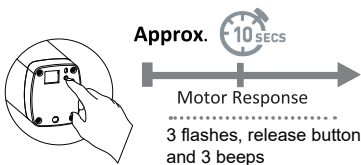
Note: the motor 5 flashes and 3 beeps

Method two:

IF PRESS OPEN AND MOTOR IS CLOSED-Press and hold motor button for 10S (3 flashes), release button and beeps 3 times, press CLOSE (5 flashes and 3 beeps), the direction has been switched successfully.

Press & Hold motor button (10sec)

Press CLOSE button once



Note: the motor 5 flashes and 3 beeps

Setting Open and Close Limits

Important!! When attempting below steps, be sure to stop the shade prior to traveling past the desired position or damage to product can occur.

Press OPEN once, the curtain will open until stop against obstacle, then press CLOSE once, the curtain will close until stop against obstacle. The motor will flash 5 times and beep 3 times, the limit switch has been set successfully.

(To SET Open limit)

Press **OPEN** once. the curtain will open until stop against obstacle.



(To SET Close limit)

Press **CLOSE** once. the curtain will close until stop against obstacle.



Note: the motor 5 flashes and 3 beeps

Important!! Remember to return the remote control to “L” mode as previously described to prevent inadvertent shade adjustment during normal operation and remote handling.

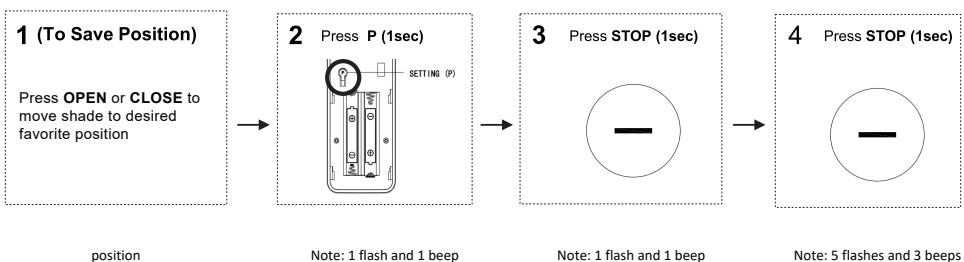
Favorite Positions

The preprogramming ensures the remote is paired with the motor, the upper and lower operation limits are set, the remote is unlocked.

Follow the below steps to set a favorite position . The favorite position is used to set a custom stopping point between the OPEN and CLOSE limits. (1 favorite position per shade motor)

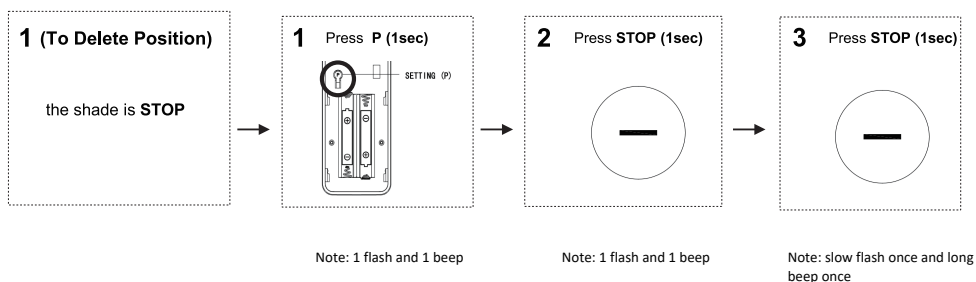
To set a favorite position for a shade motor, drive to the desired position and press the STOP button to pause the drive operation.

SETTING FAVORITE POSITION



- Press **STOP (2sec)** to move shade to the Favorite Position from any location
- Repeat Steps 1-4 for all additional motors

DELETING FAVORITE POSITION

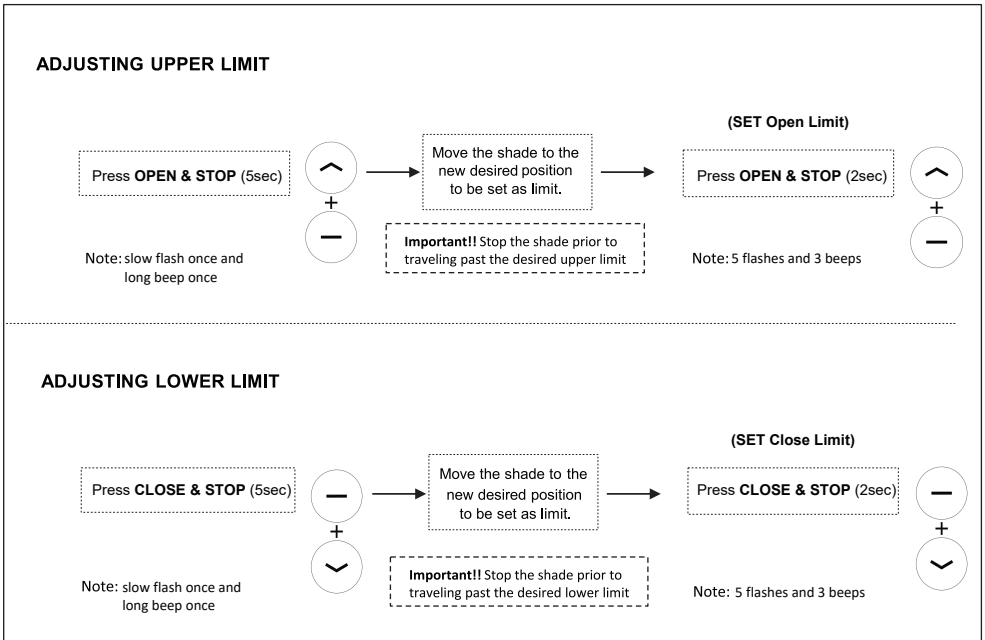


Adjust Limits

The preprogramming ensures the remote is paired with the motor, the upper and lower operation limits are set, the remote is unlocked .

Follow the below steps to adjust the OPEN and CLOSE limits if required:

If limits need adjusting, follow the instructions below to unlock the remote for limit setting:



Pair / Unpair Additional Emitter

The preprogramming ensures the remote is paired with the motor, the upper and lower operation limits are set, the remote is unlocked.

Follow the below steps to copy settings from an existing remote to a new remote.



1. SELECT CHANNEL

1a

Press any button to wake remote

1b


Within **10sec** Press "**<**" or "**>**" to select desired channel.



Note: Select channel on existing remote to be copied
Select channel on new remote where existing channel will be copied

2. ADD OR REMOVE REMOTE USING AN EXISTING REMOTE

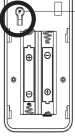
1 Press P (1sec)



EXISTING

Note: 1 flash and 1 beep

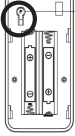
2 Press P (1sec)



EXISTING

Note: 1 flash and 1 beep

3 Press P (1sec)



NEW
(To be Added or Removed)

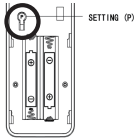
Note: 5 flashes and 3 beeps

• Repeat the same process will activate the function.

Deleting All Limits

Press P (1 flash and 1 beep) , CLOSE (1 flash and 1 beep) , and P (5 flashes and 3 beeps) , all limits are removed.

1 Press **P** (1sec)



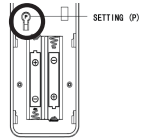
Note: 1 flash and 1 beep

2 Press **CLOSE** (1sec)



Note: 1 flash and 1 beep

3 Press **P** (1sec)

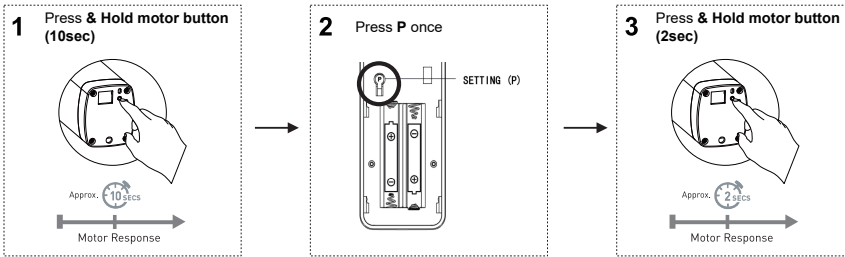


Note: 5 flashes and 3 beeps

Weak-current Switch Modes (Optional)

1 Double button pushbutton switch mode (Factory default)

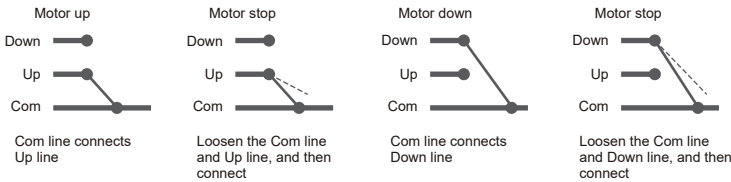
Press and hold motor button for 10S (3 flashes), release button and beeps 3 times, press P once (1 flash and 1 beep), then press button for 2S (5 flashes and 3 beeps), the mode has been successfully switched.



Note: 3 flashes, release button and 3 beeps

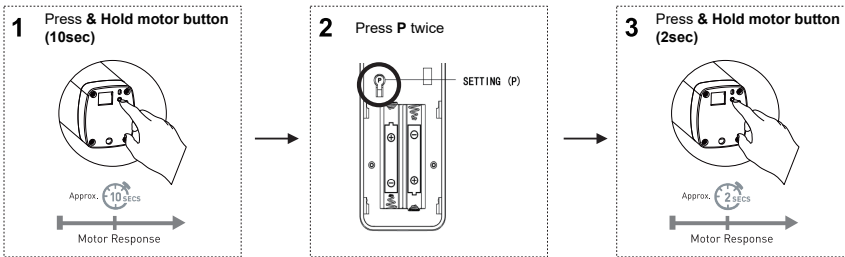
Note: 1 flash and 1 beep

Note: 5 flashes and 3 beeps



2 Mechanical switch mode

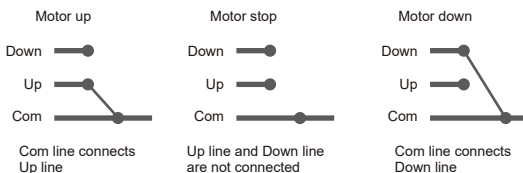
Press and hold P1 button for 10S (3 flashes), release button and beeps 3 times, press P2 twice (2 flashes and 2 beeps) then press P1 button for 2S (5 flashes and 3 beeps), the mode has been successfully switched.



Note: 3 flashes, release button and 3 beeps

Note: 2 flash and 2 beep

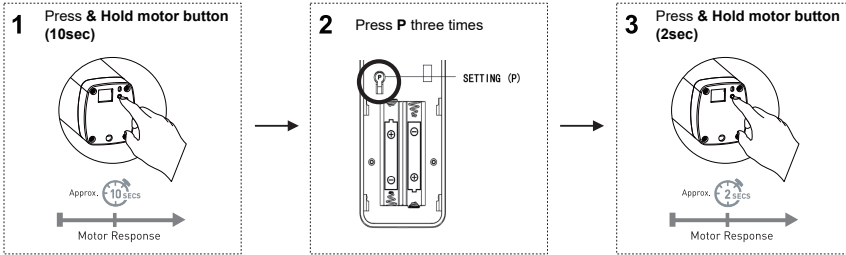
Note: 5 flashes and 3 beeps



Weak-current Switch Modes (Optional)

3 Electronic switch mode

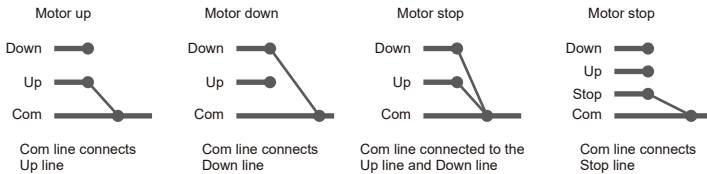
Press and hold P1 button for 10 S (3 flashes) release button and beeps 3 times, press P2 for 3 times (3 flashes and 3 beeps), then press P1 button for 2S (5 flashes and 3 beeps), the mode has been successfully switched.



Note: 3 flashes, release button and 3 beeps

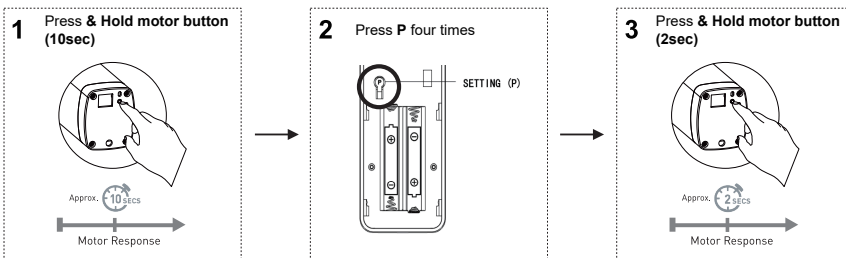
Note: 3 flash and 3 beep

Note: 5 flashes and 3 beeps



4 Single channel pushbutton switch mode

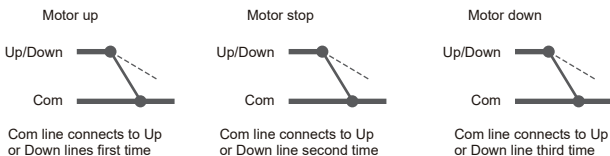
Press and hold P1 button for 10S (3 flashes), release button and beeps 3 times, press P2 for 4 times (4 flashes and 4 beeps), then press P1 button for 2S (5 flashes and 3 beeps), the mode has been successfully switched.



Note: 3 flashes, release button and 3 beeps

Note: 4 flash and 4 beep

Note: 5 flashes and 3 beeps

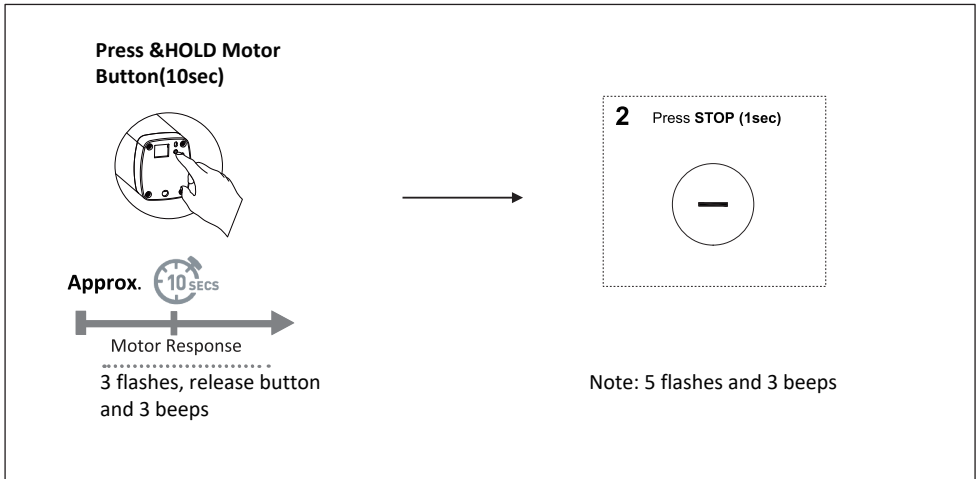


Run/Stop by Pulling Fabric

The preprogramming ensures the remote is paired with the motor, the upper and lower operation limits are set, the remote is unlocked

Do the following steps to manually open/close the shades if needed.

*The factory default mode is ON.



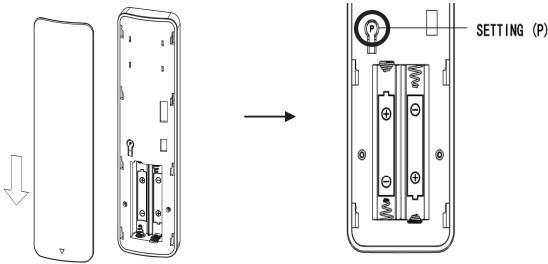
• Repeat the same process will activate the function.

Speed Regulation

Each battery motor will come preprogrammed from Smart .
 The preprogramming ensures the remote is paired with the motor, the upper and lower operation limits are set,
 the remote is unlocked

Follow the below steps to adjust the motor speed. To adjust the motor speed a remote must be paired.

To enter speed adjustment mode remove the rear battery cover of the remote. Press the left **P** button.



Note: 1 flash and 1 beep

To Increase speed:

! IMPORTANT

.....
 If the motor beeps twice and the indicator light flashes rapidly, its' speed has reached the maximum or minimum level.

Press OPEN:



Note: 1 flash and 1 beep

Repeat →



Note: 5 flashes and long beep once

To Decrease speed:

! IMPORTANT

.....
 If the motor beeps twice and the indicator light flashes rapidly, its' speed has reached the maximum or minimum level.

Press CLOSE:



Note: 1 flash and 1 beep

Repeat →



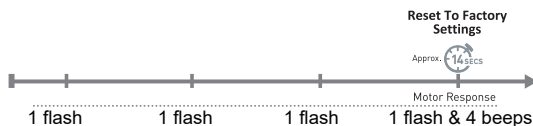
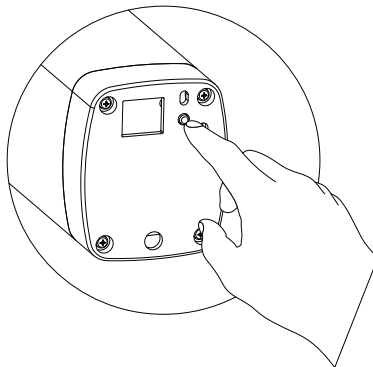
Note: 5 flashes and long beep once

Reset to Factory Mode

The preprogramming ensures the remote is paired with the motor, the upper and lower operation limits are set, the remote is unlocked .

Follow the below steps to reset the motor to factory settings and delete all limits/remote pairings.

To reset the shade motor to factory settings with no stored limits locate the P1 button on the motor head . Hold the button for 14 seconds . (4 flash 4 beeps)



The motor will 4 flash and 4 beeps times before the reset is complete . The vvvvv button must be held the entire time . Red led light on confirm the factory reset is complete

Refer to the intial Setup Programming section to program a shade after a factory reset.