



NIDHI VASHA

THE GYPSY'S WIFE

Autumn Winter'21



Inspired by a song by Leonard Cohen by the same name, this collection is an ode to love and longing, and consequent disclaim of all that holds down a free-spirited gypsy woman....

Boho-chic in treatment, it celebrates the visceral, sensual, hedonistic spirit of intense loving and reckless abandon, deep, and sometimes dark...

The brand tells this story in the brand's quintessential folkloric language, with all its theatricality.

From flirty ruffles, fringes and rich tassels over sheer layers, dramatic volumes, tell-tale surfaces to tribal patterns in surfaces and nature inspired prints creating a perfect medley of florals and geometrics true to the bohemian ethos... the imagery created is mysterious, intriguing, and intense.

Delicate laces compliment the vintage beadwork giving the East European Bohemian, a rich, nomadic, Indian / Central Asian opulence. Embroidered leather corset belts accentuate the feminine form, unapologetically, whilst motifs taking inspiration from birds, create an interesting dichotomy of confinement and release.

Opulent velvets meet delicate silk charmeuses and diaphanous organzas and chiffons juxtaposed create an interesting vocabulary for the urban nomad with a vintage soul.

This collection uses patches and leftover materials from previous collections in order to create a whole new visual, keeping true to the label's zero waste endeavour and sustainable practises.



NIDHI YASHA

THE GYPSY'S WIFE

Autumn Winter'21

SKYE

Featuring Skye top and skirt set in lace and beading details at the front and the back of the garment.



NIDHI YASHA



THE GYPSY'S WIFE | Autumn Winter'21



JULIA

Presenting Julia tulle dress with printed lining and ruffle details at the hem.







OLIVIA



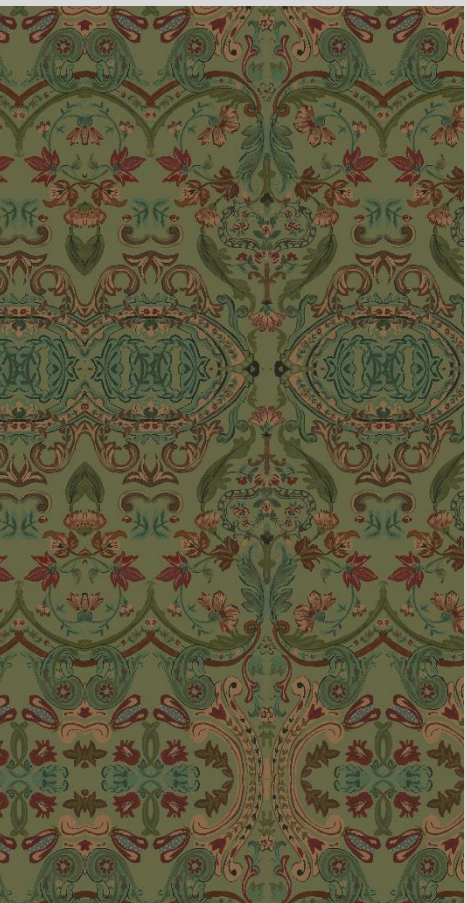
Featuring Olivia printed velvet dress with raw silk sleeves.



NIDHI YASHA



THE GYPSY'S WIFE | Autumn Winter'21



DITA

Featuring Dita dress in
printed velvet with tulle
capelet.





RAIN

Featuring Rain plisse blouse with embroidery details at the back and printed skirt with tulle layer



NIDHI YASHA



THE GYPSY'S WIFE | Autumn Winter'21



ATHENA

Presenting Athena pure silk printed habutai and chiffon dress with ruffles detail.





FOREST

Featuring Forest Ruffle blouse with Bralette and leather corset and multilayered skirt in mix-prints.



NIDHI YASHA



THE GYPSY'S WIFE | Autumn Winter'21



ZOEY

Presenting Zoey Ruffle V neck blouse with embroidered back with tie up peasant sleeves. And velvet trousers with beading details at the front and the back hem.



NIDHI YASHA

MICHELLE

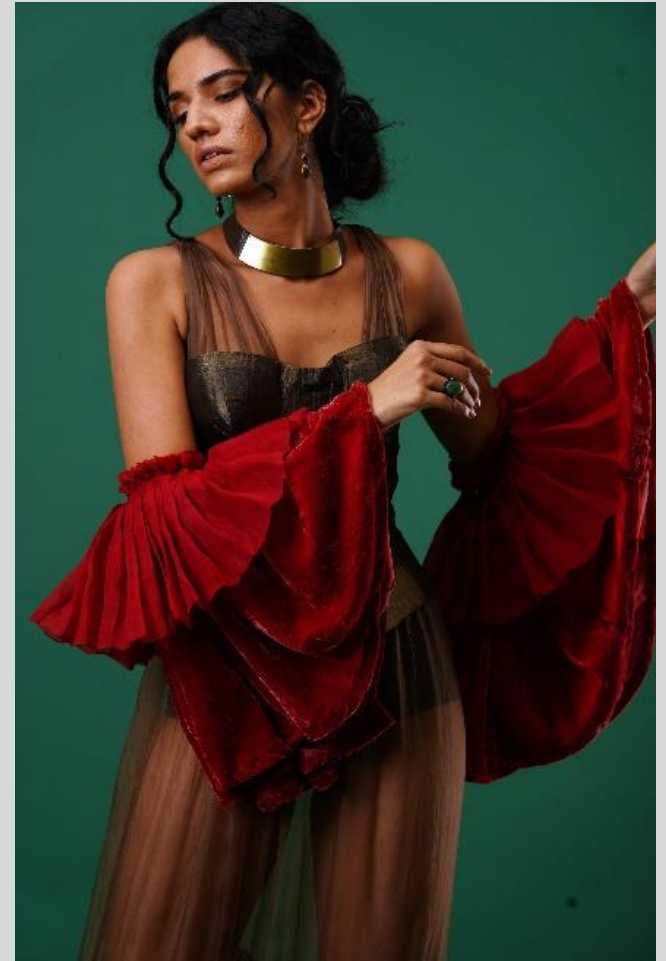
Featuring Michelle Habutai bishop sleeves blouse with beaded details at the neckline and chiffon gathered skirt with lace edging details

THE GYPSY'S WIFE | Autumn Winter'21

NIDHI YASHA



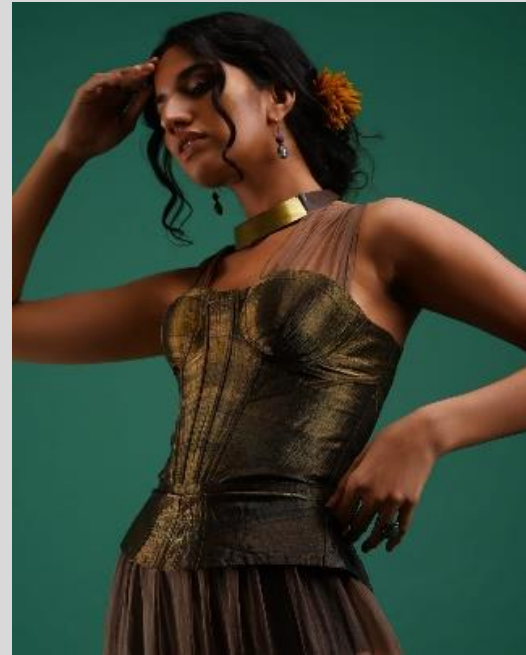
THE GYPSY'S WIFE | Autumn Winter'21



GAIA

Presenting Gaia organza
embroidered dress with
brocade corset styled with
cuff

10



FIONA

Featuring Fiona printed dress with tulle layer and ruffles detail paired with wool patchwork jacket with printed lining.



NIDHI YASHA



THE GYPSY'S WIFE | Autumn Winter'21



CLEMENTINA

Presenting Clementina mini dress with organza sleeves and matka embroidered jacket with beaded tassels detail.







AUTUMN

Featuring Autumn
corset and chiffon
skirt with lace at
hem.



NIDHI YASHA



THE GYPSY'S WIFE | Autumn Winter'21



INDIA

Presenting India pure silk corset and Viscose printed draped set with self on self rice stitches detail.



NIDHI YASHA



LUNA



Presenting Luna silk
douppione ombre dress with
ruffles detail paired with
wool patchwork jacket with
beaded fringe details.

NIDHI YASHA



THE GYPSY'S WIFE | Autumn Winter'21



ROSE ANNE

Featuring Rose Anne printed silk corset with leather piping detail and chiffon frilled skirt with ombre dyed effects.





AUBRIE

Presenting Aubrie organza embroidered puff sleeves shirt. with bustier and printed trousers.



NIDHI YASHA



THE GYPSY'S WIFE | Autumn Winter'21



HAZEL

Presenting Hazel flared gypsy dress with lace and chiffon edging details.



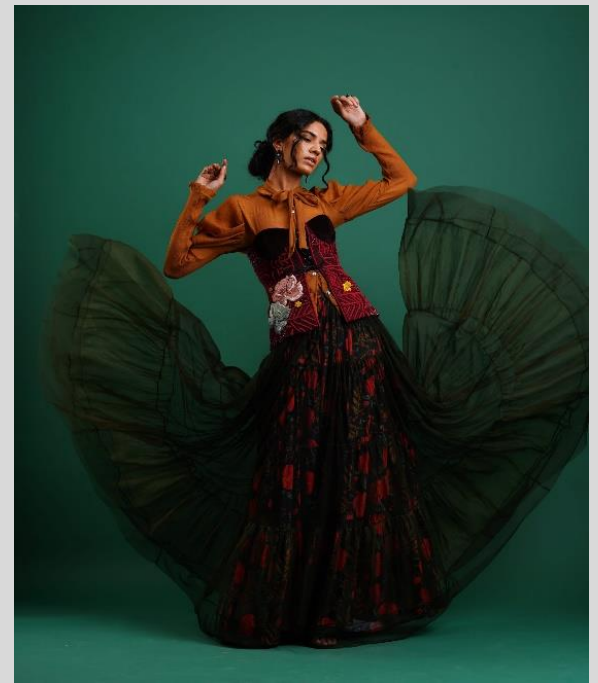


REAPER

Featuring Reaper chiffon blouse with puff sleeves and tie up detail and heavily embroidered corset paired with tulle and organza skirt with printed lining.



NIDHI YASHA



THE GYPSY'S WIFE | Autumn Winter'21



MICHAELA

Presenting Michaela Flared gypsy dress with cutout and embroidered peasant sleeves with Tassels detail at the back.





NIDHI YASHA



BRIDGETTE



Presenting Bridgette
Chiffon and lace - corset
blouse with embroidery
details and Trouser in
Tulle with printed lining.



NIDHI YASHA



THE GYPSY'S WIFE | Autumn Winter'21

PENELOPE

Presenting Penelope organza cape paired with printed gypsy pants with tiered hem.







SONNET

Featuring Sonnet
dress in silk brocade,
mesh and lace with
multi print.

NIDHI YASHA



THE GYPSY'S WIFE | Autumn Winter'21

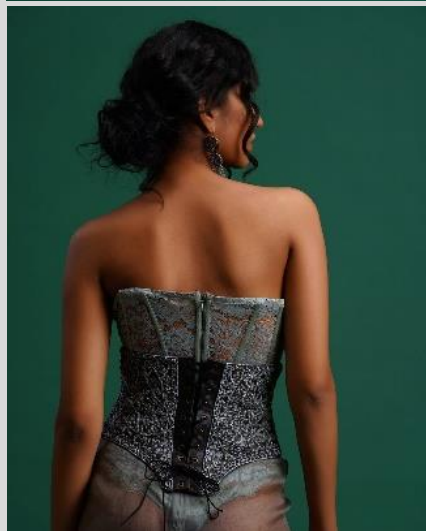


BIANCA



Presenting Bianca lace bodysuit and leather belt with embroidery details paired with chiffon and georgette Poppy cape with Ombre effects.





BLOOM

Presenting printed bloom shirt with neck tie-up details paired with solid black skirt with ruffles at the hem.



NIDHI YASHA



THE GYPSY'S WIFE | Autumn Winter'21



CECILIA

Featuring Cecilia dress
in mix print with ruffled
sleeve





LIZA

Presenting Liza skirt with
feather and fringes
details.



NIDHI YASHA



THE GYPSY'S WIFE | Autumn Winter'21



MIRIAM

Featuring Miriam
maxi dress in all
over print with
elegant bustier.







NIGHT

Presenting Navy
sheer shirt with
embroidered belt..

NIDHI YASHA



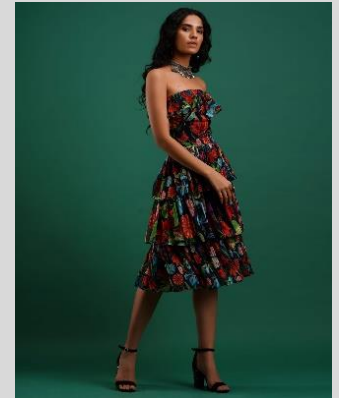
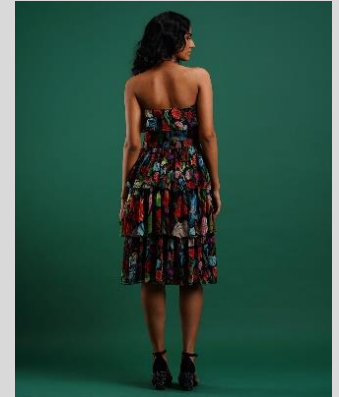
THE GYPSY'S WIFE | Autumn Winter'21



RAIA

Featuring Raia Off-shoulder dress with lots of ruffles.





A woman with short dark hair is standing in a dense forest, looking back over her shoulder. She is wearing a voluminous, flowing red dress that cascades down to the ground. The forest is lush with green foliage and trees, with sunlight filtering through the leaves.

THANK YOU

NIDHI YASHA

THE GYPSY'S WIFE | Autumn Winter'21