



Proud  
Supporter



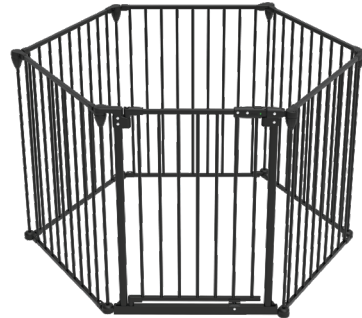
#3126 Black  
#3127 White

# Ultimate 3-In-1 Playpen

INSTRUCTION MANUAL

73cm - 370cm  
(28.8" - 144.6")  
FITS OPENINGS

75cm  
(29.5")  
TALL



**IMPORTANT! READ AND FOLLOW  
THESE INSTRUCTIONS  
CAREFULLY AND KEEP  
FOR FUTURE REFERENCE.**

# TABLE OF CONTENTS

## SAFETY INFORMATION

General	3
Maintenance	4
Warnings	4 - 5
Mountings / Tools Required	6 - 7

## WHAT'S IN THE BOX

Parts	8 - 9
-------	-------

## INSTALLATION

Playpen/Barrier Placement & Configuration	10
Playpen Assembly	11
Playpen - To Remove Panels	12
Safety Play Mat	12
Barrier - A Side Assembly	13
Barrier - B Side Assembly	14
Barrier - A Side Wall Mounting	15
Barrier - B Side Wall Mounting	16
Swing Direction Control	17

## OPERATION

How to Open	18
Cleaning Instructions	19
Spare Parts & Accessories	20

## SUPPORT

Warranty Certificate	21
Warranty Card	22
After Sales Support	22

# SAFETY INFORMATION

## GENERAL

Read this instruction manual carefully and keep it in a safe place for future reference.

The correct use and maintenance of this product is essential.

## MAINTENANCE

Regularly check that the product is functioning correctly, lubricate hinges and moving components. Tighten and adjust mounts to ensure secure smooth operation. Inspect all components regularly and stop using if any component is damaged or missing.

Refer to pages 18 & 19 for operation and cleaning instructions.

# WARNING

## WHEN USED AS SAFETY BARRIER

- Incorrect fitting or positioning of this safety barrier can be dangerous.
- Do not use the safety barrier if any components are damaged, missing or disassembled.
- Never install this product on glass doors or windows.
- Stop using the product if the child is able to climb, dislodge or open barrier unassisted.
- A maximum of 9 panels can be used when used as a barrier/room divider.
- Danger to older children if climbing over the barrier.
- Regularly check that the barrier is properly fixed and secure.
- Any additional or replacement parts should only be obtained from after sales support.
- This safety gate is suitable for openings from 73cm (28.8") to 370cm (144.6").
- Before using this product, carefully inspect for any loose parts and whether any parts need to be tightened.
- Children have died or been seriously injured when gates/enclosures are not securely installed.
- ALWAYS install and use gates/enclosures as directed using all required parts.





# WARNING

## WHEN USED AS PLAYPEN

- This product is intended for use with children from 6 to 24 months or small to medium pets from 4.5kg (10 lbs) up to 18kg (40 lbs).
- Do not use the playpen without the Perma Products play mat base.
- Do not place the playpen close to an open fire or other heat source.
- Do not leave anything in the playpen which may provide a foothold or create a danger of suffocation or strangulation.
- This safety barrier is for domestic use only.
- This safety barrier has a manual closing system.
- Ensure that the playpen is fully erected and all the locking mechanisms engaged before placing your child in this playpen.
- Do not use the playpen if any part is broken, torn or missing and use only spare parts approved by manufacturer, accessories which are not approved by manufacturer shall not be used.
- Check regularly that all assembly fittings are tightened properly.
- Use only with the locking/latching mechanism securely engaged.
- NEVER use to keep child away from pool.

# SAFETY INFORMATION

## MOUNTINGS

Safety barrier / Playpen must be installed in a structurally sound opening. Ensure mounting surface (wall, door, stair posts, etc.) is strong, rigid and has an even surface.

**Note:** If the safety barrier is used at the top of the stairs, it should not be positioned below the top level. If the safety barrier is used at the bottom of the stairs, it should be positioned at the front of the lowest tread possible.

This product must only be fixed to a solid and secure surface. If unsure, check with a qualified builder or trades person that the installation you intend is suitable and safe within the chosen location.

## TOOLS REQUIRED



PENCIL



PHILLIPS HEAD  
SCREW DRIVER



DRILL

# SAFETY INFORMATION

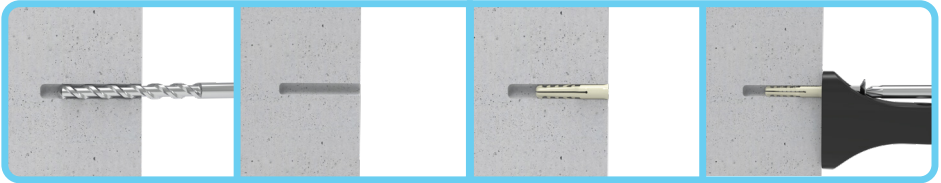
Select the appropriate fixing method from the list below.

## HARD WALL MOUNTING BRICK / CONCRETE



### FOR INSTALLATION

Wood Screws  
Anchor



1. Drill 5mm (3/16")  
Pilot Hole

2. Clear Hole

3. Insert Anchor & Tap

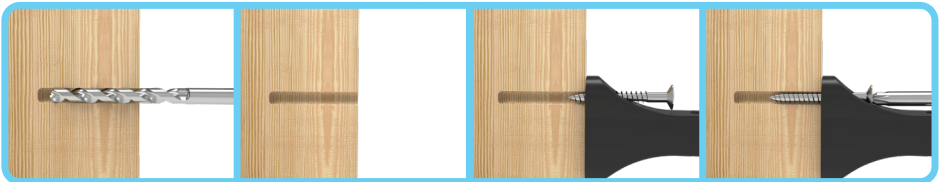
4. Tighten slowly

## WOOD MOUNTING



### FOR INSTALLATION

Wood Screws



1. Drill 2mm (5/65")  
Pilot Hole

2. Clear Hole

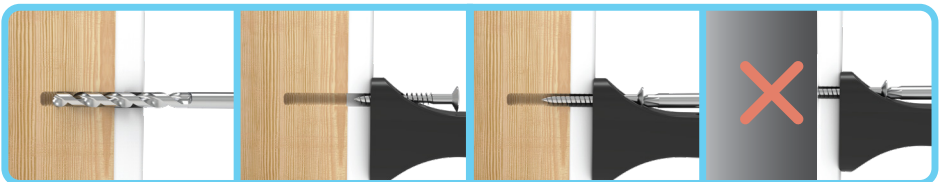
3. Insert Screw

4. Tighten slowly

## DRY WALL MOUNTING

Locate the wood stud and follow the wood mounting instructions.

Do not mount into dry wall without additional support.



1. Drill 2mm (3/32")  
Pilot Hole

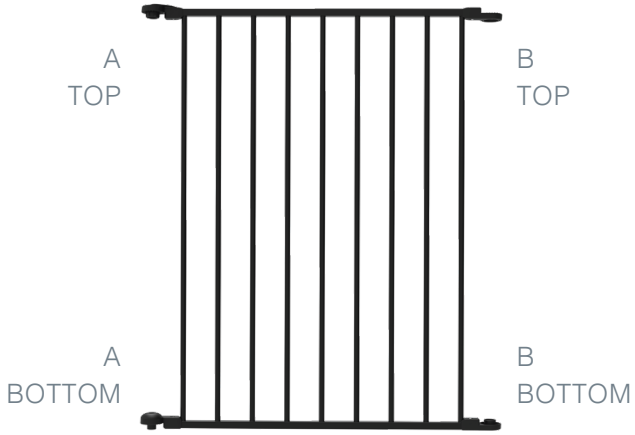
2. Insert Screw

3. Tighten slowly

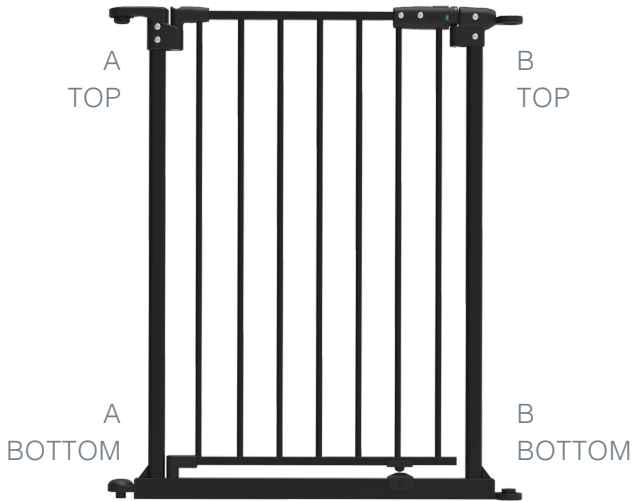
Do not mount without  
additional support

# WHAT'S IN THE BOX

## PARTS



5 x Barrier Panels



1 x Gate Panel

# WHAT'S IN THE BOX



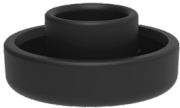
1 x A - TOP



1 x B - TOP



2 x C - BRACKET



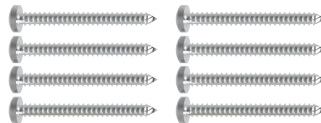
1 x A - BOTTOM



1 x B - BOTTOM



8 x Anchors



8x 50mm (2")  
Screws



7 x Corner Tubes

# INSTALLATION

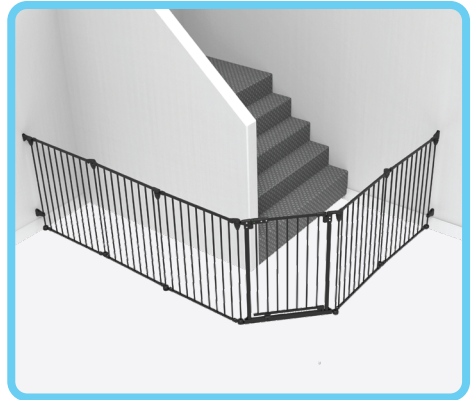
## Playpen/Barrier Placement & Configuration

Suitable placement & configuration of Playpen/Barrier.

### Install Guide - Playpen

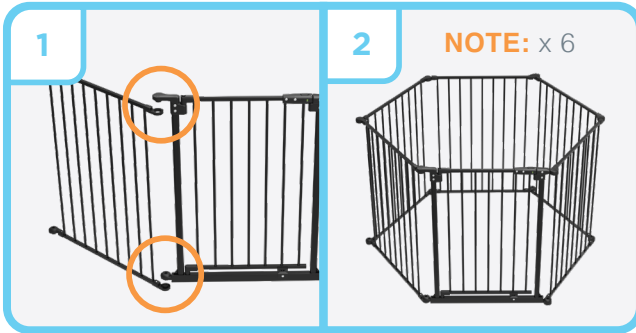


### Install Guide - Barrier



# INSTALL GUIDE - PLAYPEN

## Playpen Assembly



**1. Align** the Gate Panel and Barrier Panel together by lifting in place.

**2. Repeat** previous step with remaining Panels.



**3. Press** Tube into Bottom A to compress spring.

**4. Align & Release** Tube into Top B.

**5. Repeat** previous step with remaining Panels and Corner Tubes until all sides are aligned.

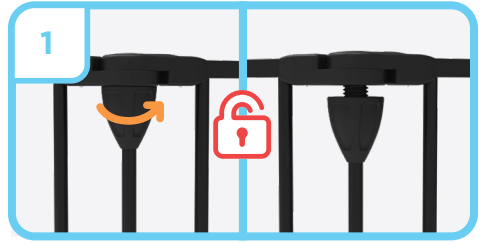


**6. Tighten** all 6 x Corner Tubes anti-clockwise until locked firm.

# INSTALL GUIDE - PLAYPEN

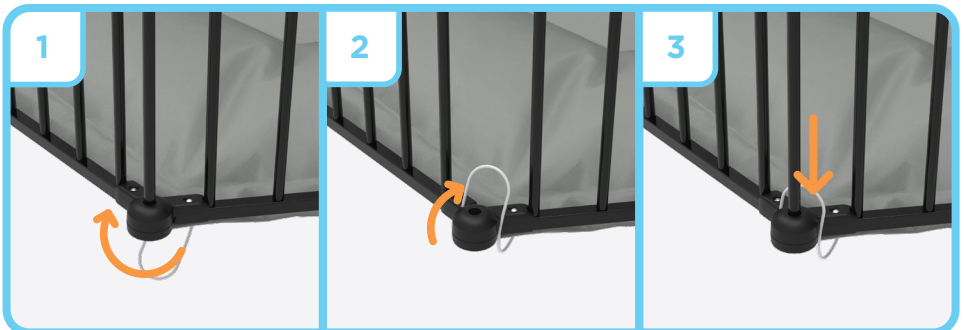
## To Remove Panels

1. **Unscrew** all 6 x Corner Tubes clockwise until loose.
2. **Press** Tube downwards.
3. **Release** Tube to side and remove.
4. **Lift** Panels apart to pack down.



## Safety Play Mat

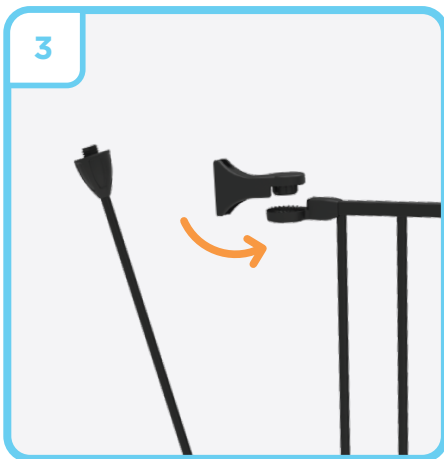
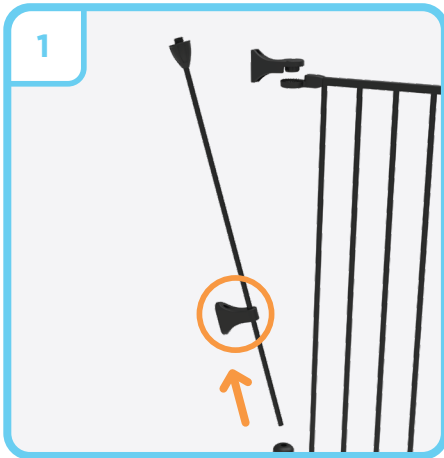
**Note:** A safety play mat is required if playpen is used with children. Perma Child Safety play mat is sold separately, contact after sales support for more details.





## Step 1. A - Side Assembly

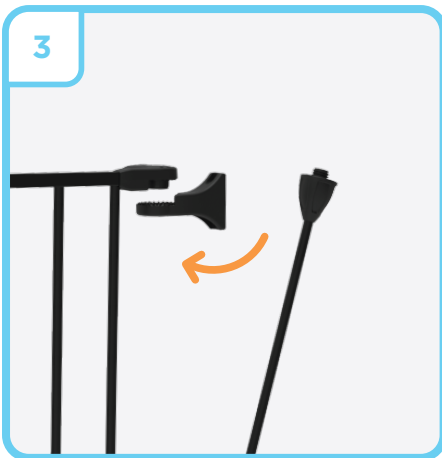
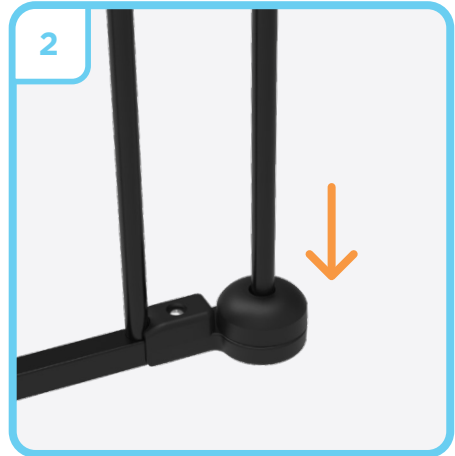
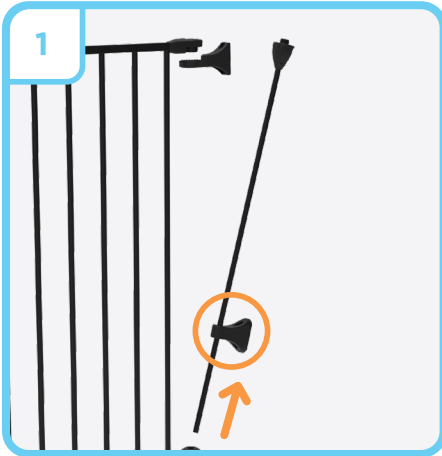
- 1. Place C - Bracket** over Corner Tube and put the Corner Tube into the hole of A - Bottom Cap.
- 2. Tilt & Press** the assembly downwards and align 90°.
- 3. Add A - Top** onto the panel, turn the corner tube assembly clockwise till firm and in the locked position.
- 4. Turn** anti-clockwise to tighten after installed.



# INSTALL GUIDE - BARRIER

## Step 2. B - Side Assembly

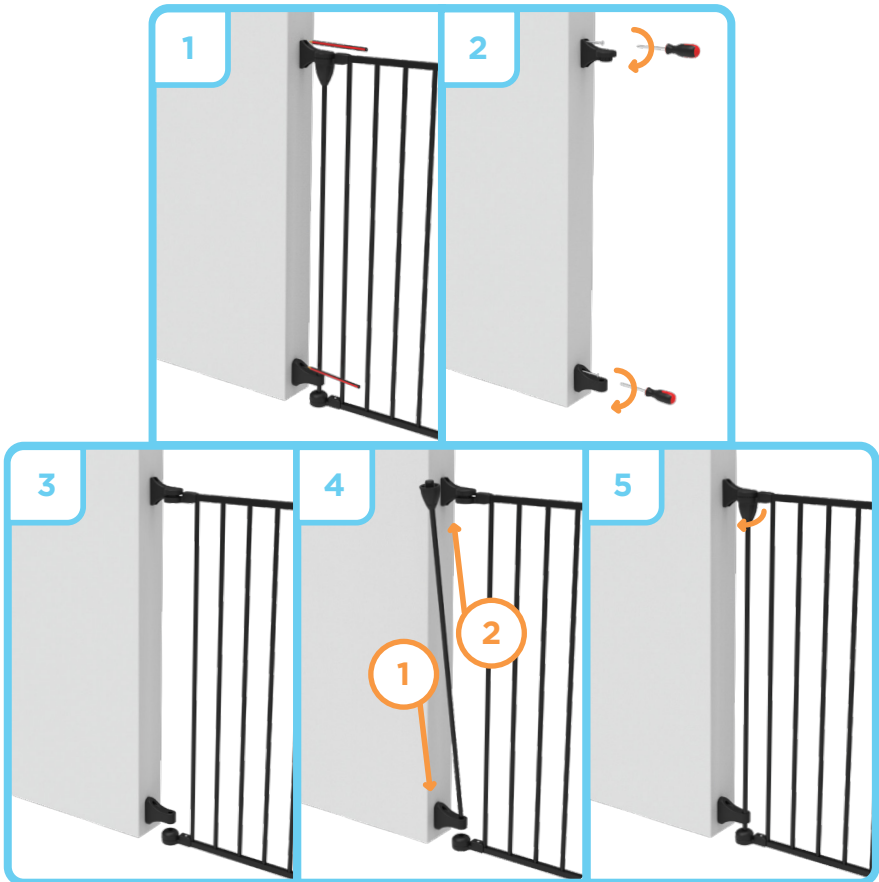
- 1. Place C** - Bracket over Corner Tube and put the Corner Tube into the hole of the panel, add B-Bottom Cap.
- 2. Tilt & Press** the assembly downwards and align 90°.
- 3. Add B** - Top onto the panel, turn the Corner Tube assembly clockwise till firm and in the locked position.
- 4. Turn** anti-clockwise to tighten after installed.



# INSTALL GUIDE - BARRIER

## Step 3. A - Side Wall Mounting

1. Use a pencil to mark screw hole positions for the A - Top & A - Bottom Brackets. **2.** Disassemble Corner Tube and Barrier Panel from brackets, pre drill and screw brackets in place.
- 3.** Align panel onto wall brackets. **4.** Replace the Corner Tube, threading through C - Bracket. **5.** Tighten Corner Tube firm.

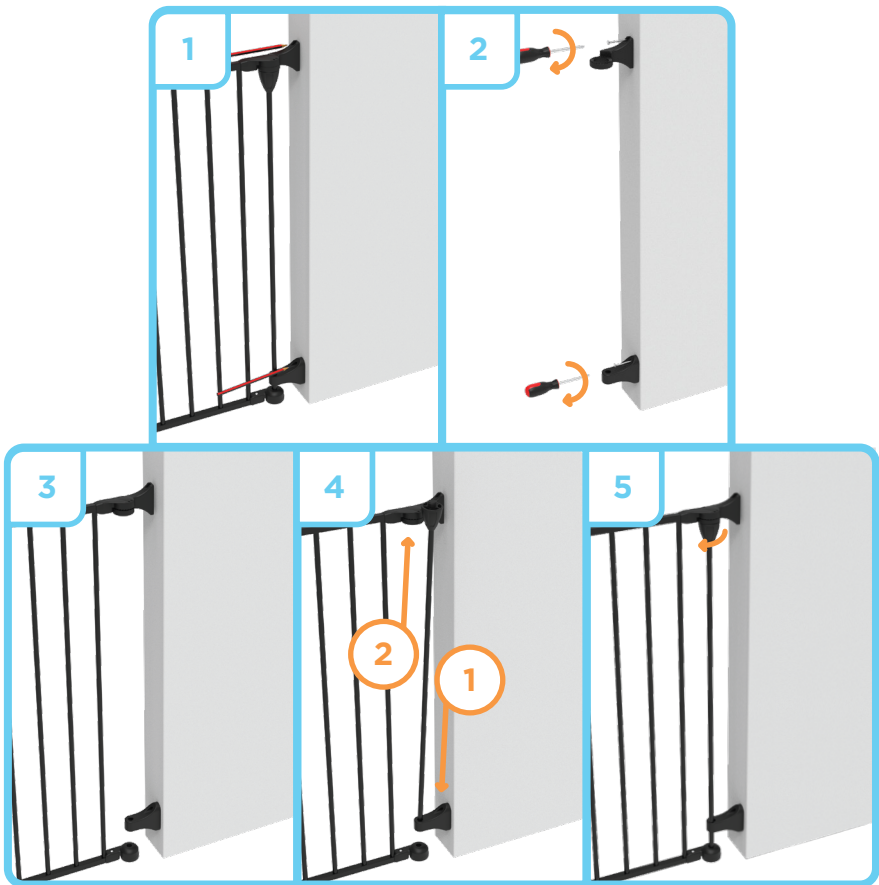


**NOTE:** Install the C - Brackets close to the ground and on even surface to ensure Playpen/ Barrier is secure.

# INSTALL GUIDE - BARRIER

## Step 4. B - Side Wall Mounting

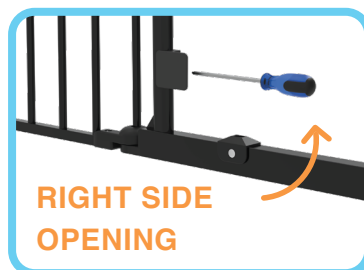
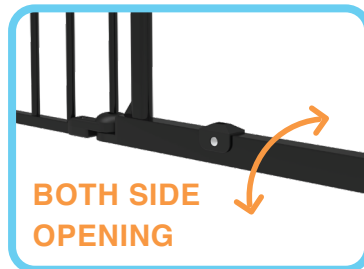
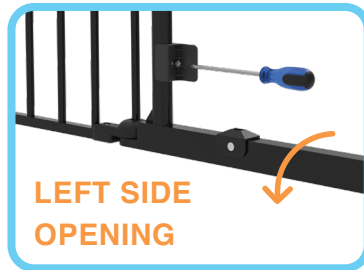
1. Use a pencil to mark screw hole positions for the B - Top & B - Bottom Brackets. **2.** Disassemble Corner Tube and Barrier Panel from brackets, pre drill and screw brackets in place.
- 3.** Align panel onto wall brackets **4.** Replace the corner tube, threading through C - Bracket **5.** Tighten corner tube firm.



**NOTE:** Install the C - Brackets close to the ground and on even surface to ensure Playpen/ Barrier is secure.

## Step 5. Swing Direction Control

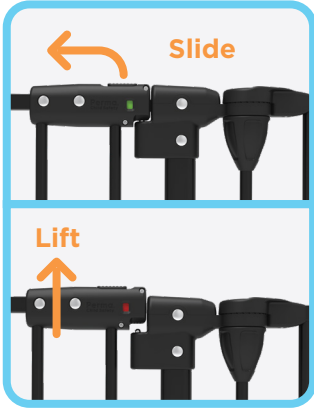
Determine which direction the gate should open. Screw in Swing Direction Control piece opposite to the desired opening direction. Use images below as a guide.



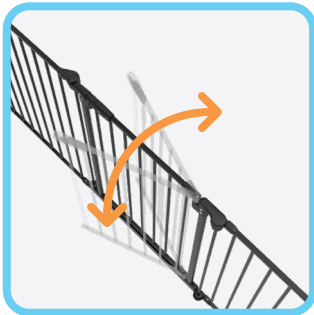
**NOTE:** For top of stairways, the gate should never open out over stairs. Use Phillips Head Screwdriver.

# OPERATION

## HOW TO OPEN



- 1.** Using one hand, place thumb on the button and grip Gate Panel with fingers. Slide button and lift Gate Panel.



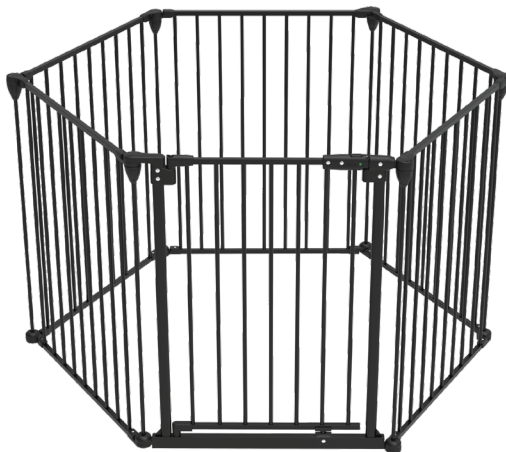
- 2.** Open gate in either direction. When released gate will swing closed automatically.



- 3.** To enable stay open feature, open gate to a 90° angle.

**NOTE:** Always check gate is properly closed and secure at all times.

## CLEANING INSTRUCTIONS



Simply use a soft damp cloth to wipe Playpen/Barrier, dry after cleaning. Do not use chemical or abrasive cleaners.

## SPARE PARTS & ACCESSORIES

Scan the QR Code to view the full range of Spare Parts & Accessories including; Additional Panels, Additional Gates, Stability Clips and Wall Mounting Sets.



## WARRANTY CERTIFICATE

Congratulations! You have made an excellent choice of this quality product. Our commitment to quality also includes our service. Should you, contrary to expectations, experience defects due to manufacturing faults, we will provide you with a warranty against defects as follows:

### WARRANTY

The product is guaranteed to be free from defects in workmanship and parts for a period of 12 months from the date of purchase. Defects that occur within this warranty period, under normal use and care, will be repaired, replaced or refunded at our discretion. The benefits conferred by this warranty are in addition to all rights and remedies in respect of the product that the consumer has under the Competition and Consumer Act 2010 and similar state and territory laws.

Our goods come with guarantees that cannot be excluded under the Australian Consumer Law. You are entitled to a replacement or refund for a major failure and for compensation for any other reasonably foreseeable loss or damage. You are also entitled to have the goods repaired or replaced if the goods fail to be of acceptable quality and the failure does not amount to a major failure.

### PROOF OF PURCHASE

This warranty is valid for the original purchase and is not transferable. Please keep your purchase docket, tax invoice or receipt as proof of purchase and date of which the purchase was made.

### EXTENT OF WARRANTY

This warranty is limited to defects in workmanship or parts. All defective products or parts will be repaired or replaced. This warranty does not cover consumable items.

### NORMAL WEAR AND TEAR

This warranty does not cover normal wear and tear to the products or parts.

### EXCLUSIONS

This warranty does not cover:

- Any defects caused by an accident, misuse, abuse, improper installation or operation, lack of reasonable care, unauthorised modification, loss of parts, tampering or attempted repair by a person not authorised by the distributor.
- Any product that has not been installed operated or maintained in accordance with the manufacturer operating instructions provided with the product.
- Any product that has been used for purposes other than domestic use.

### TO MAKE A CLAIM

If a defect in the goods appears within 12 months, you are entitled to claim a warranty. Please contact after sales support via the link below:

[www.permachildsafety.com/contact-us](http://www.permachildsafety.com/contact-us)

Please ensure that you have a copy of proof of purchase so that we are able to respond as quickly and efficiently as possible.



## WARRANTY CARD

**DETAILS:**

**PRODUCT NAME:** Ultimate 3-In-1 Playpen/ Barrier

**PRODUCT NUMBER:** Black 3126 / White 3127 (Please circle)

**YOUR NAME:**

**ADDRESS:**

**PHONE:**

**EMAIL:**

**DATE OF PURCHASE:**

**LOCATION OF PURCHASE:**

---

We recommend that you keep a copy of your receipt, showing the date of purchase, with this warranty certificate and keep for your reference. In the event of a product fault, please contact after sales support. Ensure that you include the product details (as shown on this card) so that we are able to respond as quickly and efficiently as possible.

---



## AFTER HOURS SUPPORT



Scan the QR code for Live Chat Support  
or visit: [permachildsafety.com/contact-us](https://permachildsafety.com/contact-us)



Scan the QR code for Live Chat Support  
or visit: [permachildsafety.com/contact-us](https://permachildsafety.com/contact-us)



Perma Child Safety



@permachildsafety