



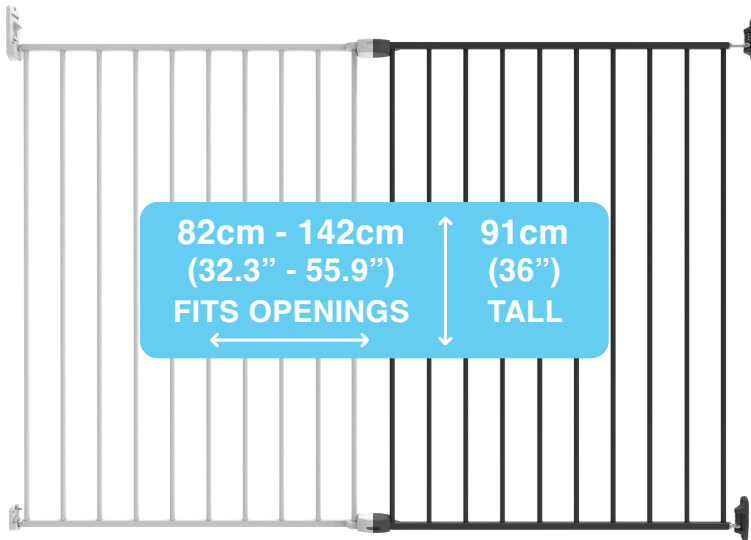
Proud
Supporter



Extra Tall & Wide Superior Swing Gate

INSTRUCTION MANUAL

#2742 White
#2769 Warm Black



**IMPORTANT! READ AND FOLLOW
THESE INSTRUCTIONS
CAREFULLY AND KEEP
FOR FUTURE REFERENCE.**

TABLE OF CONTENTS

SAFETY INFORMATION

General	03
Maintenance	03
Warnings	04-05
Mountings / Tools Required	06-07

WHAT'S IN THE BOX

Parts	08-09
-------	-------

INSTALLATION

Gate Placement	10
Assembling Gate Panels	11-13
Hinge Side Mounting	14
Locking Side Mounting	15-16
Hinge Assembly	16-17
Gate Adjustment	18 -19

OPERATION

How to Operate	20
Cleaning Instructions	21

SUPPORT

Warranty Certificate	22
Warranty Card	23
After Sales Support	23

SAFETY INFORMATION

GENERAL

Read this instruction manual carefully and keep it in a safe place for future reference.

The correct use and maintenance of this product is essential.

MAINTENANCE

Regularly check that the product is functioning correctly, lubricate hinges and moving components. Tighten and adjust mounts to ensure secure smooth operation. Inspect all components regularly and stop using if any component is damaged or missing.

Refer to pages 20 & 21 for operation and cleaning instructions.



WARNING

- Adult assembly required.
- This gate is for domestic use only.
- The gate must not be fitted across windows.
- Always check that the gate is correctly closed.
- Danger to older children if climbing over the product.
- Do not use gate if any components are damaged, missing or disassembled.
- If the gate is used at the top of the stairs, it should not be positioned below the top level. Always have the gate open away from the stairs. Keep 15cm (6") gap between gate and the top step.
- If the gate is used at the bottom of the stairs, it should be positioned at the front of the lowest tread possible.
- NEVER use to keep child away from pool.
- Never leave child unattended when using this product.
- Never use with a child able to climb over or dislodge/ open the gate enclosure.
- Never install this product on glass doors. Always install this product against reliable doors or walls.
- Incorrect installation can be dangerous.



WARNING

- Use only with the locking/ latching mechanism securely engaged.
- Make sure the product is installed as per the installation guides placement.
- Regularly check that the gate is properly installed and secure.
- Any additional or replacement parts should be obtained from after sales support.
- Gate must be fitted between rigid surfaces such as plaster board, timber or hard wall.
- Do not put any goods which can be grabbed by children or pets near this product to prevent injury.
- Before using this product, carefully inspect for any loose parts and whether any parts need to be tightened.
- Children have died or been seriously injured when gates/ enclosures are not securely installed.
- To prevent serious injury or death, securely install gate and use according to manufacturer's instructions.
- ALWAYS install and use gates/enclosures as directed, using all required parts.
- This safety barrier has a manual closing system.
- This product is intended for use with children from 6 to 24 months or small to medium pets.

SAFETY INFORMATION

MOUNTINGS

Gate must be installed in a structurally sound opening. Ensure mounting surface (wall, door, stair posts, etc.) is strong, rigid and has an even surface.

Note: If the safety barrier is used at the top of the stairs, it should not be positioned below the top level. If the safety barrier is used at the bottom of the stairs, it should be positioned at the front of the lowest tread possible.

This gate must only be fixed to a solid and secure surface. If unsure, check with a qualified builder or trades person that the installation you intend is suitable and safe within the chosen location.

TOOLS REQUIRED



PENCIL



PHILLIPS HEAD
SCREW DRIVER



DRILL

SAFETY INFORMATION

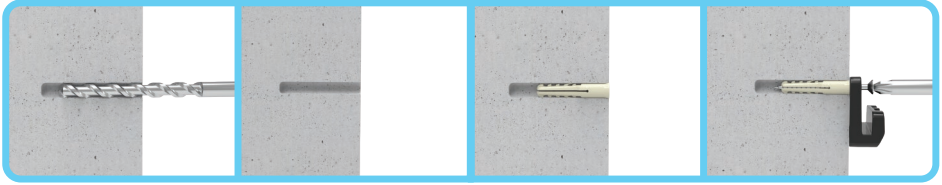
Select the appropriate fixing method from the list below.

HARD WALL MOUNTING BRICK / CONCRETE



FOR INSTALLATION

Wood Screws
Anchor



1. Drill 5mm (3/16")
Pilot Hole

2. Clear Hole

3. Insert Anchor & Tap

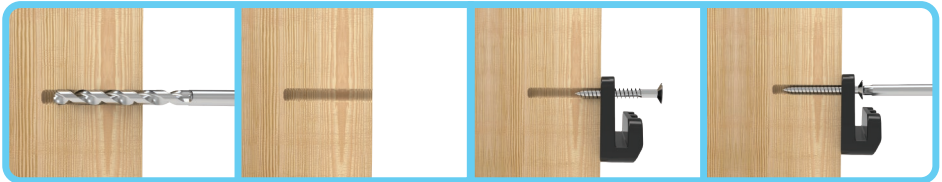
4. Tighten slowly

WOOD MOUNTING



FOR INSTALLATION

Wood Screws



1. Drill 2mm (5/65")
Pilot Hole

2. Clear Hole

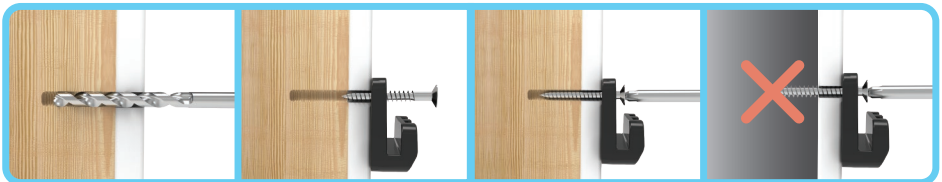
3. Insert Screw

4. Tighten slowly

DRY WALL MOUNTING

Locate the wood stud and follow the wood mounting instructions.

Do not mount into dry wall without additional support.



1. Drill 2mm (3/32")
Pilot Hole

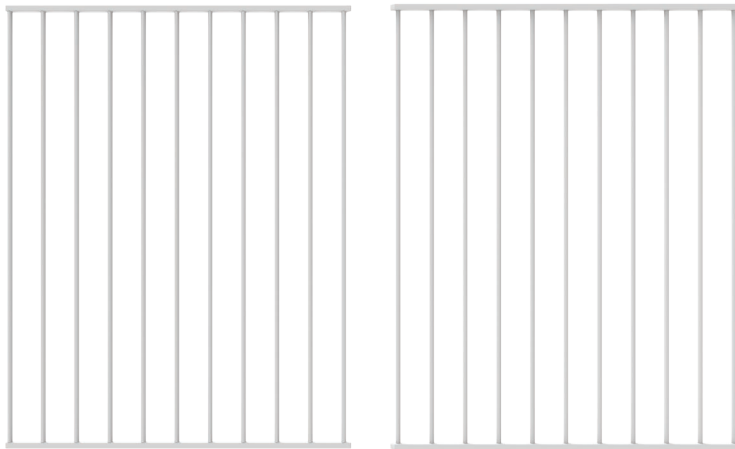
2. Insert Screw

3. Tighten slowly

Do not mount without
additional support

WHAT'S IN THE BOX

PARTS



2 x Gate Panels



1 x Top Catch Bracket



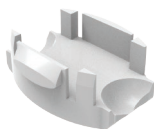
1 x Bottom Catch Bracket



1 x Stop Pin
(Pre-installed)



2 x Top Gate Connectors



2 x Bottom Gate Connectors

WHAT'S IN THE BOX

HINGE ASSEMBLY

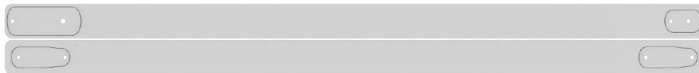
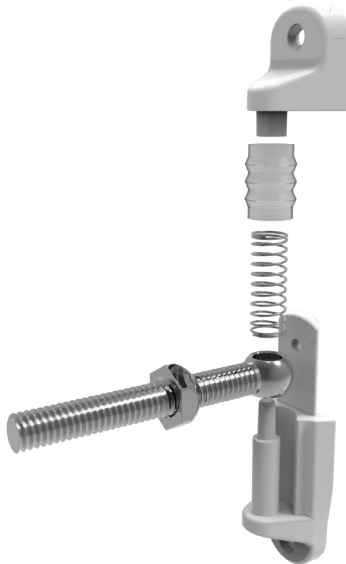
2 x Hinge Cap

2 x Spring Cover

2 x Springs

2 x Hinge Bolt

2 x Hinge Bottom



1 x Hinge Side Installation Guide

1 x Locking Side Installation Guide



2 x Adjustable Catch Bolt



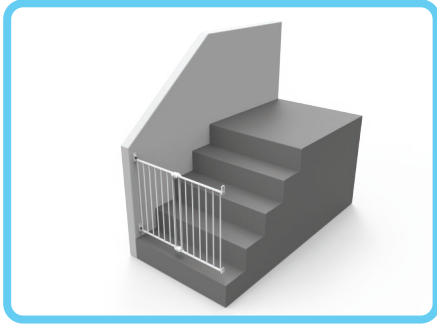
1 x Wrench



8 x Screws

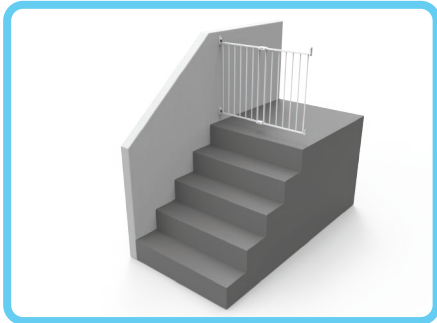
Swing Gate Placement

Suitable placement of Swing Gate.



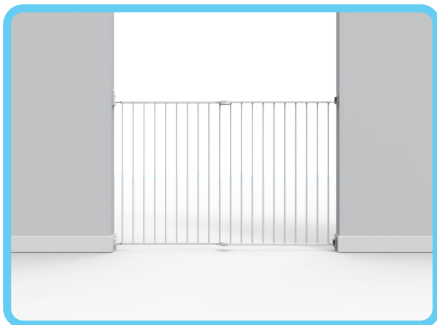
Bottom of Stairs

If the gate must be installed on stairs, position it towards the front of the lowest step.



Top of Stairs

The gate must be installed on the top step or landing and only open away from the stairs (see page 15 for Swing Direction Control). **DO NOT** install gate in the middle of the stairs as it may become a hazard.



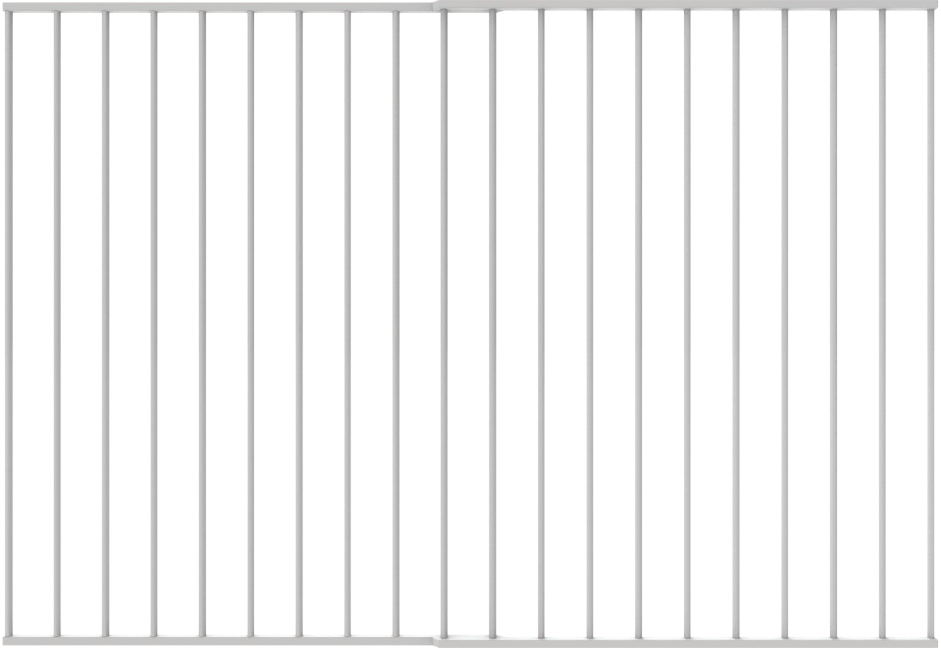
Hallways & Doorways

Suitable for extra wide Hallways & Doorways.

INSTALLATION

Step 1. Assembling Gate Panels

1. Adjust panels until gate is approximately the correct width. Panels should fit without any distance between rails or bars.



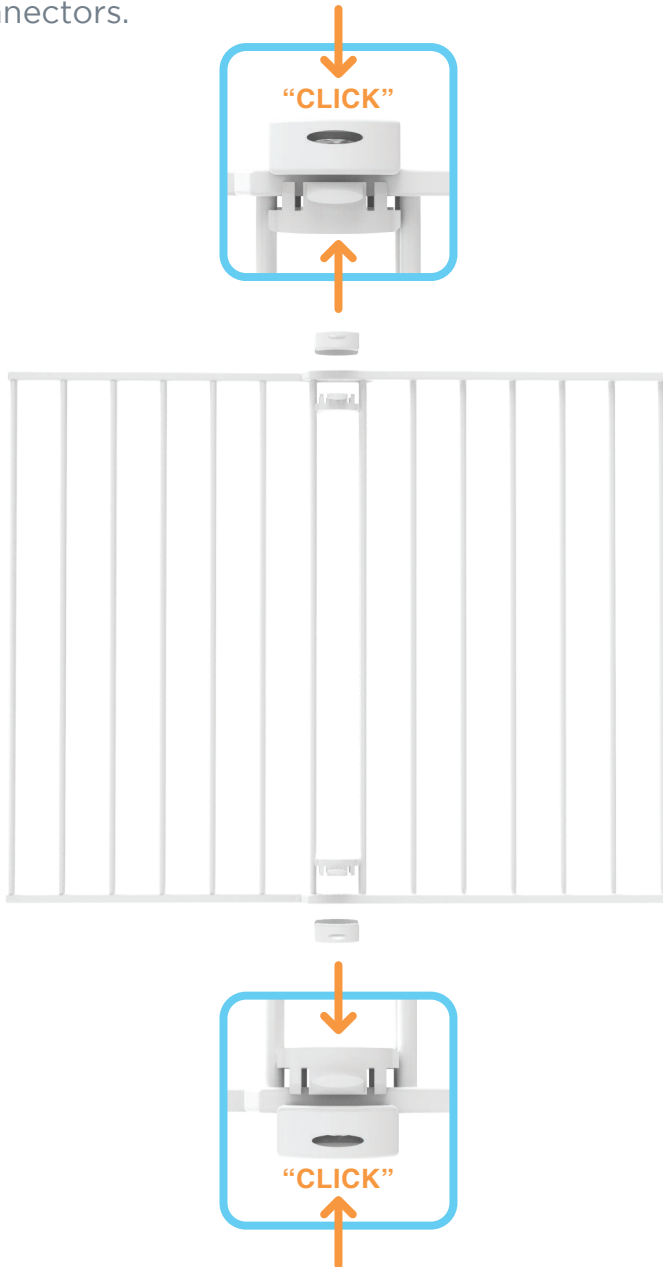
Correct

Incorrect



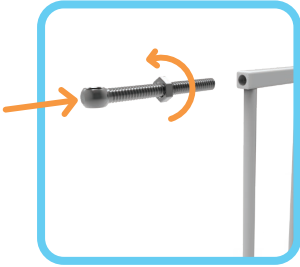
INSTALLATION

2. Secure Gate Panels together using Top and Bottom gate connectors.

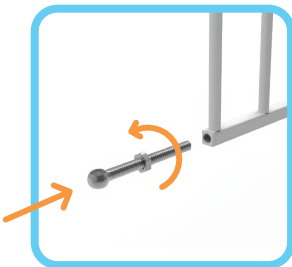
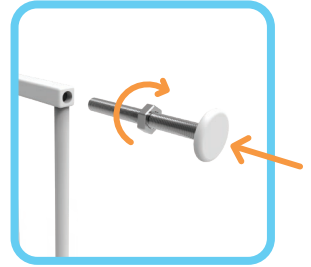


INSTALLATION

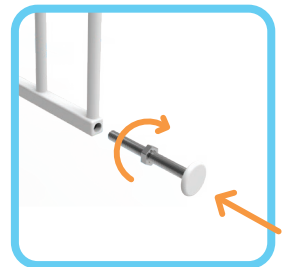
3. Screw Hinge Bolts into top and bottom rail of one gate panel.
Extend bolts equally.



4. Screw Adjustable Catch Bolts into top and bottom rails of second gate panel.
Extend bolts equally.



NOTE: Final Bolt adjustments will be made later.

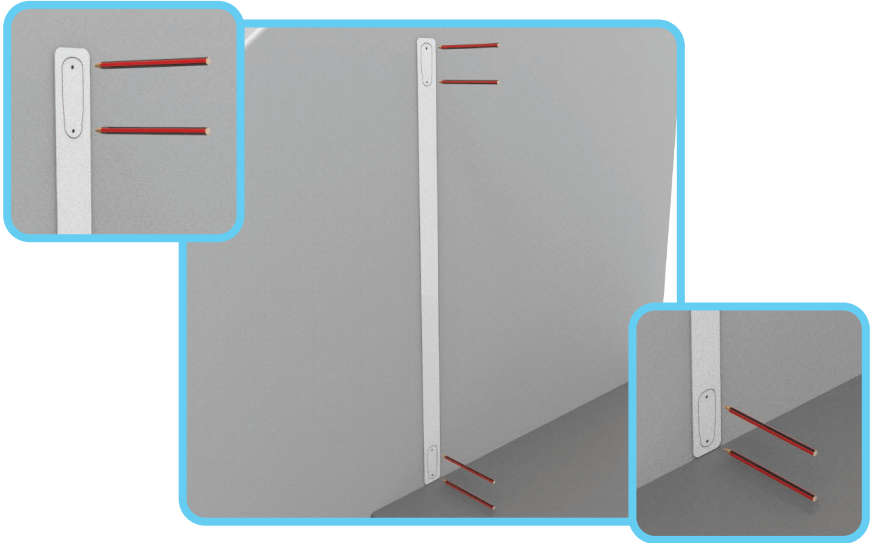


INSTALLATION

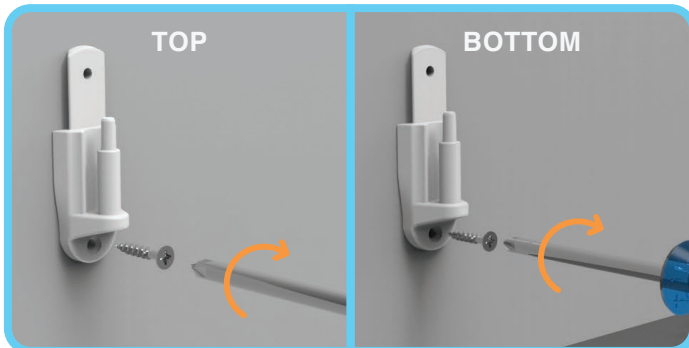
Step 2. Hinge Side Mounting

1. Align template against mounting surface with the end marked “FLOOR” even with the floor.
Mark screw hole positions.

Mark screw hole positions.



2. Mount Upper and Lower Hinge Bottoms, secure in place with only bottom Screw.



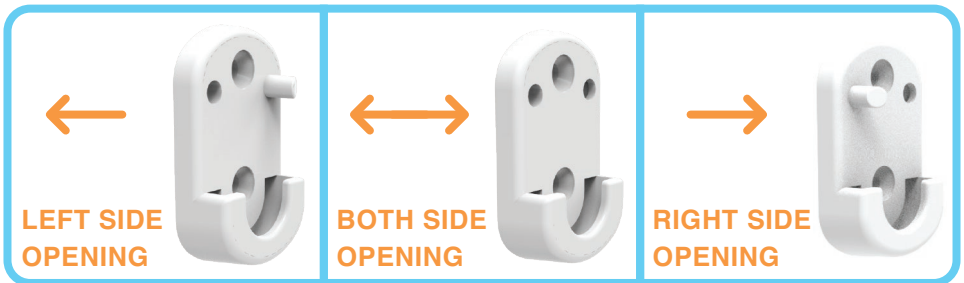
Step 3. Locking Side Mounting

1. Align template against mounting surface with the end marked “FLOOR” even with the floor.
Mark screw hole positions.

Mark screw hole positions.

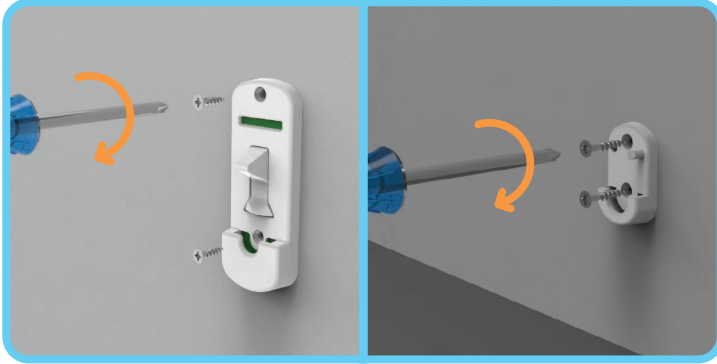


2. Determine which direction gate should open. For the top of stairways, gate should never open out over stairs. Insert Stop Pin from behind in holes of Bottom Catch Bracket opposite desired opening direction.



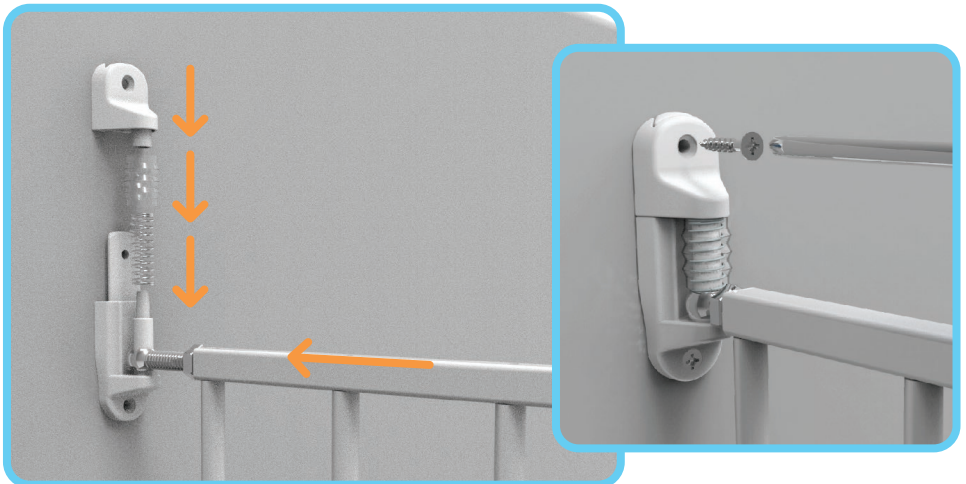
INSTALLATION

3. Using the Screws provided mount Top and Bottom Catch Brackets in screw hole positions.



Step 5. Hinge Assembly

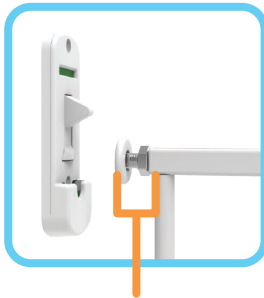
1. Center gate in opening. Adjust Upper and Lower Hinge Bolts, so post fits into bolt eyelet. Place Spring and Spring Cover on upper and lower hinge posts. Place Hinge Cap on Hinge and push down until it locks in position. Screw in place.



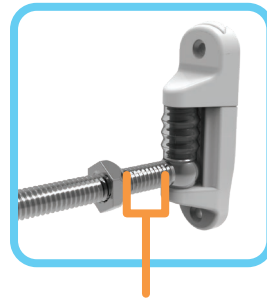
INSTALLATION

IMPORTANT

Leave at least 3cm (1.2") to maximum 6cm (2") gap on bolts for the locking side. Minimum 2.5cm (1") to maximum 6cm (2") gap on bolts for the hinge side. Make sure bolts extended equally on both sides.



Locking Side
Min. 3cm (1.2")
Max. 6cm (2")



Hinge Side
Min. 2.5cm (1")
Max. 6cm (2")

INSTALLATION

Step 6. Gate Adjustment

1. Adjust Catch Bolts until secure in both Top and Bottom Catch Brackets. Top Bolt must lock under locking latch when in the closed position.



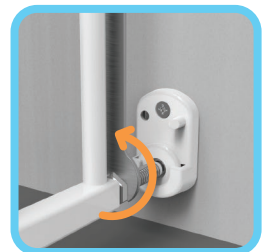
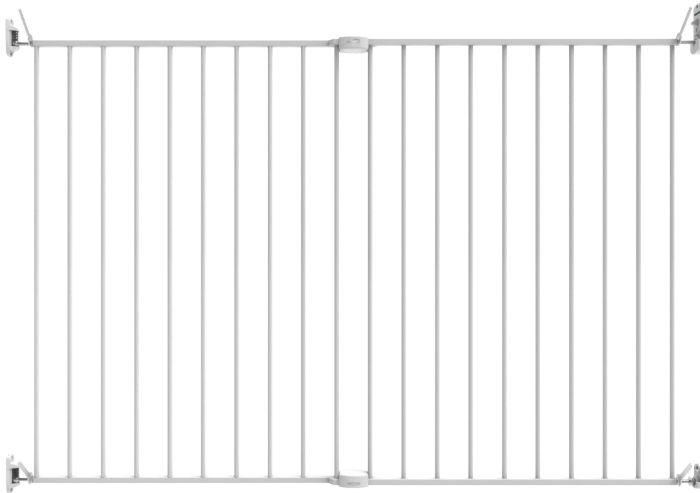
NOTE: If gate is not at correct width, it may be necessary to remove gate and readjust the panels. (Refer back to Step.1 Assembling Gate Panels)

Check gate opens and closes smoothly.

INSTALLATION

2. When satisfied with gate width, tighten all Screws with a Phillips head screw driver. With the Wrench, tighten all lock nuts towards the gate.

⚠ CAUTION: Do not over-tighten lock nuts, over-tightening may damage thread.



HOW TO OPERATE

Opening & Closing

To open gate, press down on Top Catch Bracket with thumb. Lift gate out of brackets.

To close and lock gate, Top Adjustable Catch Bolt must rest in Top Catch Bracket and Bottom Adjustable Catch Bolt must rest in Bottom Catch Bracket.



NOTE: Always check gate is properly closed and secure at all times.

Locking Indicator

Locked Position:

Children are unable to open the gate in this position

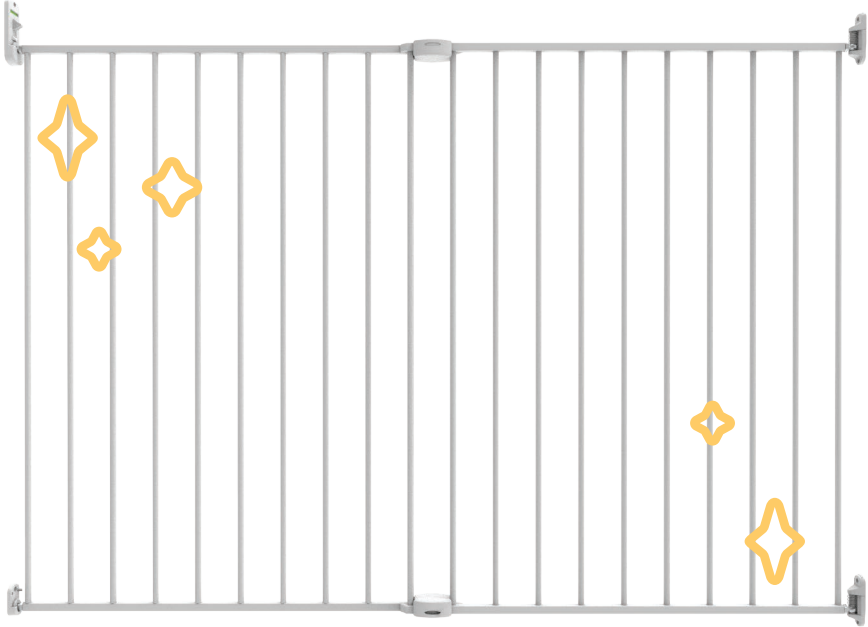


Unlocked Position:

Children are able to open the gate in this position.



CLEANING INSTRUCTIONS



Simply use a soft damp cloth to wipe Swing Gate, dry after cleaning. Do not use chemical or abrasive cleaners.

WARRANTY CERTIFICATE

Congratulations! You have made an excellent choice of this quality product. Our commitment to quality also includes our service. Should you, contrary to expectations, experience defects due to manufacturing faults, we will provide you with a warranty against defects as follows:

WARRANTY

The product is guaranteed to be free from from defects in workmanship and parts for a period of 12 months from the date of purchase. Defects that occur within this warranty period, under normal use and care, will be repaired, replaced or refunded at our discretion. The benefits conferred by this warranty are in addition to all rights and remedies in respect of the product that the consumer has under the Competition and Consumer Act 2010 and similar state and territory laws.

Our goods come with guarantees that cannot be excluded under the Australian Consumer Law. You are entitled to a replacement or refund for a major failure and for compensation for any other reasonably foreseeable loss or damage. You are also entitled to have the goods repaired or replaced if the goods fail to be of acceptable quality and the failure does not amount to a major failure.

PROOF OF PURCHASE

This warranty is valid for the original purchase and is not transferable. Please keep your purchase docket, tax invoice or receipt as proof of purchase and date of which the purchase was made.

EXTENT OF WARRANTY

This warranty is limited to defects in workmanship or parts. All defective products or parts will be repaired or replaced. This warranty does not cover consumable items.

NORMAL WEAR AND TEAR

This warranty does not cover normal wear and tear to the products or parts.

EXCLUSIONS

This warranty does not cover:

- Any defects caused by an accident, misuse, abuse, improper installation or operation, lack of reasonable care, unauthorised modification, loss of parts, tampering or attempted repair by a person not authorised by the distributor.
- Any product that has not been installed operated or maintained in accordance with the manufacturer operating instructions provided with the product.
- Any product that has been used for purposes other than domestic use.

TO MAKE A CLAIM

If a defect in the goods appears within 12 months, you are entitled to claim a warranty. Please contact after sales support via the link below:

www.permachildsafety.com/contact-us

Please ensure that you have a copy of proof of purchase so that we are able to respond as quickly and efficiently as possible.

WARRANTY CARD

DETAILS:

PRODUCT NAME: Extra Tall & Wide Superior Swing Gate

PRODUCT NUMBER: White 2742 / Warm Black 2769 (Please circle)

YOUR NAME:

ADDRESS:

PHONE:

EMAIL:

DATE OF PURCHASE:

LOCATION OF PURCHASE:

We recommend that you keep a copy of your receipt, showing the date of purchase, with this warranty certificate and keep for your reference. In the event of a product fault, please contact after sales support. Ensure that you include the product details (as shown on this card) so that we are able to respond as quickly and efficiently as possible.



AFTER HOURS SUPPORT



Scan the QR code for Live Chat Support
or visit: permachildsafety.com/contact-us



Scan the QR code for Live Chat Support
or visit: permachildsafety.com/contact-us



Perma Child Safety



@permachildsafety