



Introducing the Sensedge Mini

(SE-200)

**Advanced air quality monitor
with a sleek, screenless design**





Educational



Residential



Office



Retail



Optimizing indoor air quality is the first step toward a healthy indoor environment where people and business thrive.

The Sensedge Mini is a new generation of smart air quality monitor developed by Kaiterra, which provides accurate and reliable air monitoring solutions for both commercial and residential spaces.

Product Excellence, Every Step of The Way

Data accuracy and reliability guaranteed by best-in-class hardware and software.



Sensing components
made in Switzerland



Individually
calibrated monitors



Tested against complex
network environments for
robust connectivity

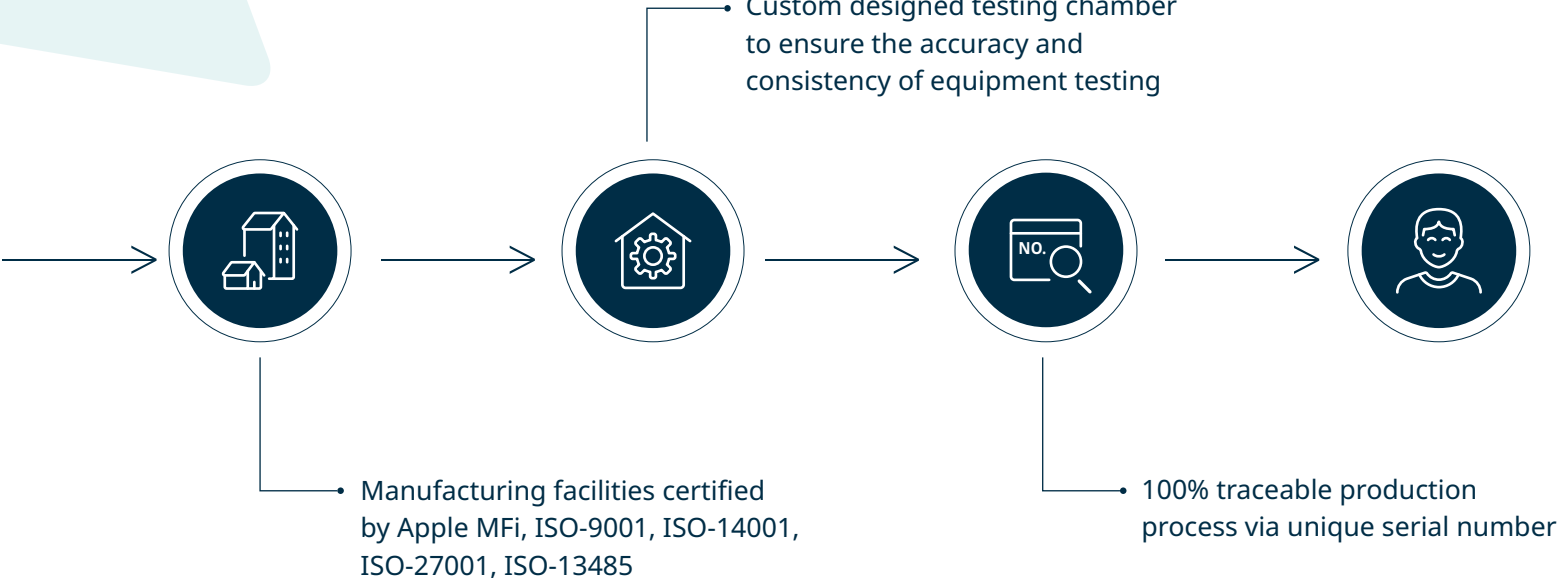


Extensive testing
across 6,000 individual
measurements



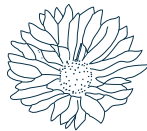
RESET certified

Robust Quality Control Process



Healthy Buildings Start Here

The Sensedge Mini is fully compliant with various green building and air quality standards, including WELL v2, LEED, RESET, the Living Building Challenge, and Fitwel.



**LIVING
BUILDING
CHALLENGE™**

fitwelSM

Our Clients Worldwide



Comprehensive Data Coverage

Powered by best-in-class sensors and Kaiterra's innovative cloud-based calibration, the Sensedge Mini provides accurate and reliable air quality readings. The air is sampled every second and data points are uploaded to the cloud in real-time to enable analysis and automation.



PM_{2.5}



TVOC



CO₂

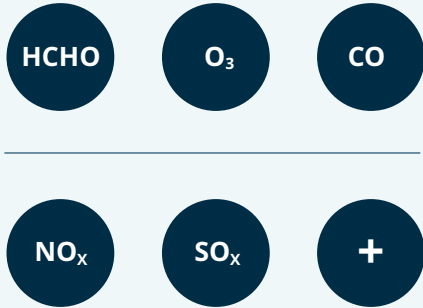


Temperature



Humidity





Modular Design Tailored to Your Needs

With Kaiterra's signature modular design, sensors in the Sensedge Mini can be easily adjusted and customized, allowing you to track additional air quality parameters such as formaldehyde, ozone, CO, NO_x, and SO_x.

No Calibration, No Problem

The Sensedge Mini uses removable sensor modules for long-term accuracy with minimal maintenance. During usage, the device tracks and calculates the life span of each sensor module according to the pollution levels that the sensors have been exposed to. Simply replace the sensors when the module status light turns red, without having to go through the traditional, costly calibration process.



Kaiterra Sensedge Mini

- ✓ Sensor Replacement
- ✓ Anyone
- ✓ < \$200
- ✓ < 1 Minute

Calibration Method

Expertise Required

Calibration Cost

Time Spent



Conventional Monitors

- ✗ Off-site Calibration
- ✗ Trained Technicians
- ✗ \$1,000+
- ✗ Weeks to Months

Accurate Readings You Can Rely On

Each Sensedge Mini device is individually tested, calibrated, and verified at the end of the production process and is backed by a performance certificate to ensure its accuracy and reliability.



Convenient Power Options

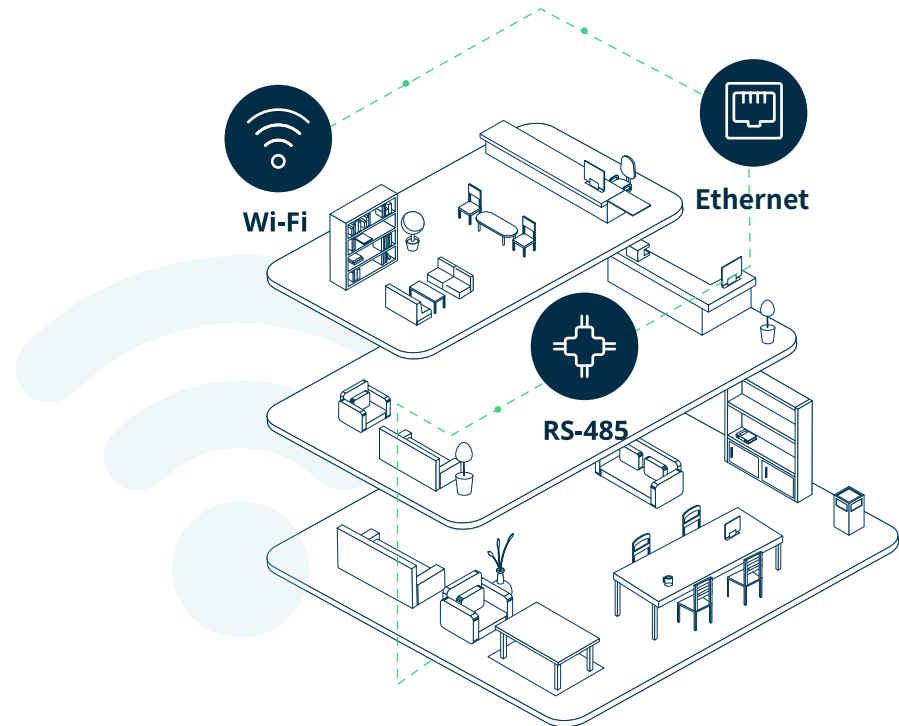
Multiple power options including USB-C, 12-30V DC direct wiring, and optional PoE (Power over Ethernet) available.



Secure, Flexible, Connected

Utilizing end-to-end SSL/TLS encryption, the Sensedge Mini provides maximum security for data transfer.

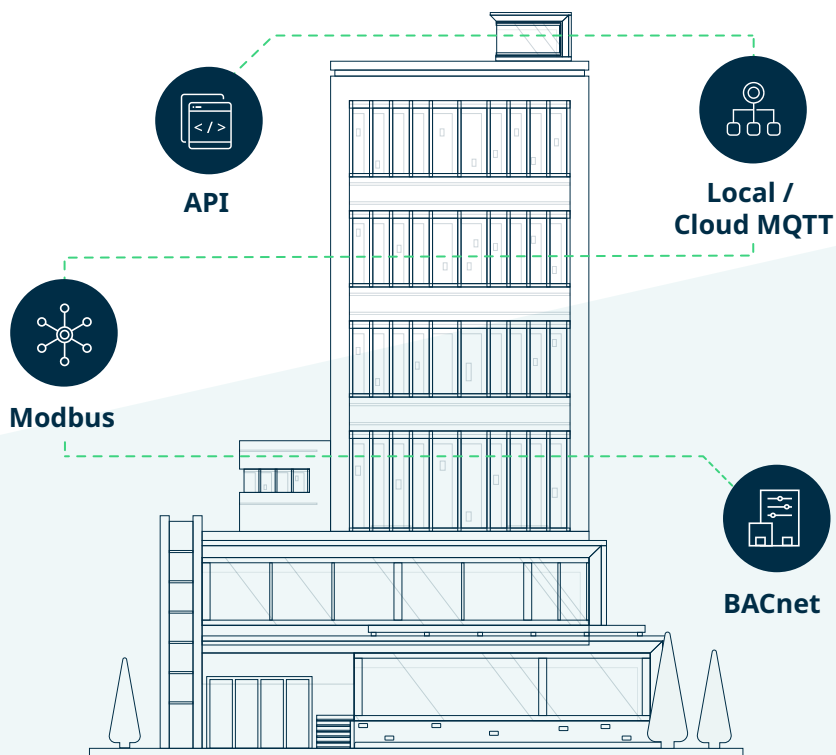
Supporting Wi-Fi, ethernet, RS-485, and various network configurations including corporate proxy servers and hidden SSIDs, the Sensedge Mini is made to fit into any commercial or residential space. Both Static IP and DHCP options are available.



Powerful Automation and Control

The Sensedge Mini supports BACnet, ModBus, local and cloud MQTT, and API integration to communicate with your building control and automation system.

Real-time air quality data can be used to trigger events and enable automation to improve HVAC system efficiency, lower energy consumption, and save costs, while boosting indoor air quality, wellness, and comfort.



Manage Your Air With the Kaiterra Dashboard

Use the Kaiterra dashboard to view real-time and historical air quality readings on the Sensedge Mini, analyze pollutant trends, compare readings across devices, and export raw data. The Kaiterra dashboard also supports a kiosk view which enables users to showcase air quality on a larger screen to promote air quality awareness and wellness initiatives.



Monitor and manage multiple devices



View real-time data and trends



Identify sources of pollution



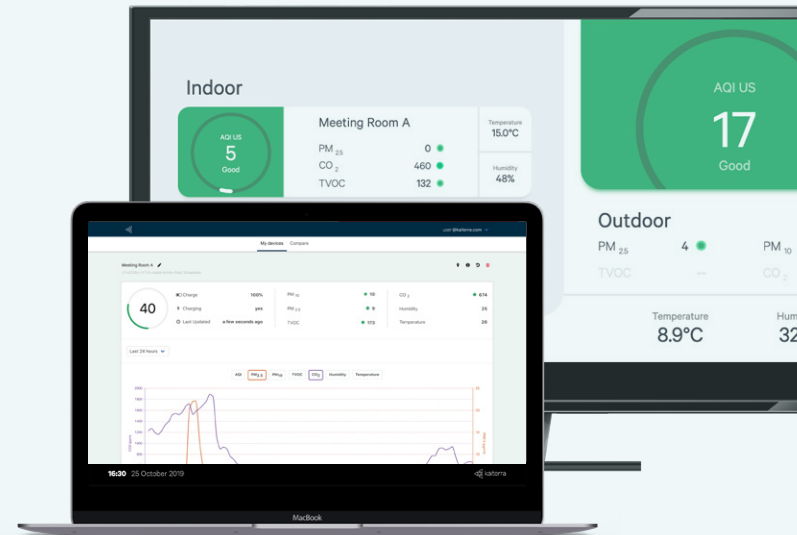
Compare readings across devices



Receive notifications



Export historical data



Designed to Blend In

With a minimal, neutral, and unobtrusive design, the Sensedge Mini truly blends into any environment and can be installed on any wall or ceiling to provide full coverage of your indoor environment.



155*129*34 mm
(6.1*5.1*1.3 in)



370g
(0.82 lbs)



Product Features



Customizable
modules



Wi-Fi
connection



Ethernet port



RS-485



Cloud & local
storage



USB-C power
supply



12-30V DC
power supply



Built for Healthy Buildings Worldwide



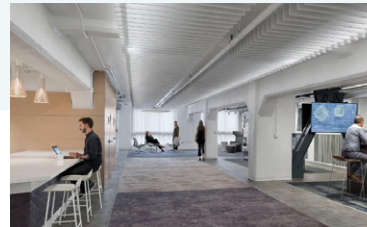
IWBI Headquarters (WELL Platinum)
New York



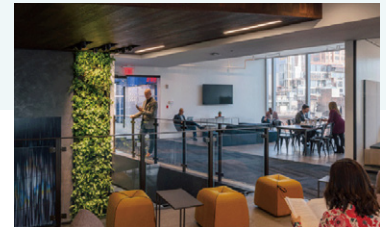
DARWIN Smart Home
Melbourne



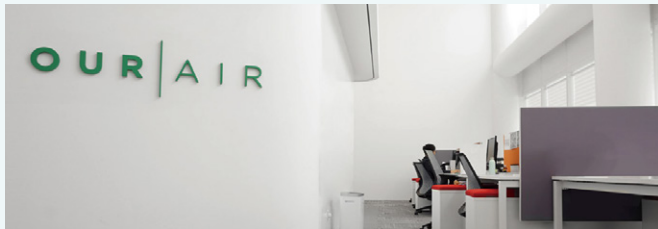
Perkins Eastman
New York



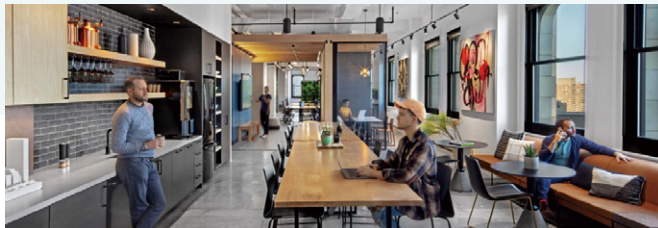
Milliken Showroom
San Francisco



Delos Living (WELL Platinum)
New York



MANN+HUMMEL Asia Pacific Headquarters
Singapore



M. Moser
New York, Hong Kong, Shanghai



MANN+HUMMEL Headquarters
Ludwigsburg

Technical Specifications

	Sensor Type	Measuring Range	Sensor Output Resolution	Accuracy
Particulate Matter 2.5 (PM_{2.5})	Laser Particle Sensor (Light Scattering)	1 - 1000 µg/m ³	1 µg/m ³	±10 % (<30 µg/m ³ : ±3 µg/m ³)
Total Volatile Organic Compounds (TVOCs)	Metal Oxide Semiconductor Sensor (MOS)	0 - 60000 ppb	1 ppb	±15 %
Carbon Dioxide (CO₂)	Non-Dispersive Infrared Detector (NDIR)	400 - 10000 ppm	1 ppm	±3 % ±50 ppm
Temperature	Digital Sensor	-20 °C - 100 °C	0.1 °C	±1 °C
Relative Humidity	Digital Sensor	0 - 99 %RH	1 %RH	±5 %RH

Dimensions

Length: 155 mm (6.1 in)

Width: 129 mm (5.1 in)

Height: 34 mm (1.3 in)

Connectivity & Intergration

Wi-Fi Connection

2.4 GHz 802.11 b/g/n

Ethernet

Modbus (RS - 485)

BACnet/IP

Secondary MQTT

Operational Environment

Operational Temperature: 0 - 50 °C

Operational Humidity: 5 to 95 %RH,
non-condensing

Power

100 - 240 V AC via USB-C plug

12 - 30 V DC via direct wiring

PoE (SKU: SE000200P)

Weight

370g

Data Storage & Logging

Log Interval: 1 minute, 1 hour, 1 day

Data Push Interval: 1 minute *

Onboard Memory: 1 hour of data

* Customizable upon requests

Installation

Surface mount

Drywall mount

Electrical box mount

Ceiling mount

Warranty & Durability

Standard Warranty: 1 year

Expected Lifespan: 5 to 7 years

