



ELEVEN SIX

PRE SPRING 22



SARA CARDI | ESPSP22-09 | JOY YELLOW (Mila Sweater layered over shoulder)



LEONIE DRESS | ESPSP22-13 | IVORY (layered over stylists woven pant)



LUNA SWEATER | ESPSP22-10 | PALE GREY MELANGE

CARLA CARDI | ESPSP22-05 | MULTI COLOR (Faith Sweater layered over shoulder)
MARLA PANT | ESPSP22-31 | IVORY





FAITH SWEATER | ESPSP22-06 | MULTI COLOR



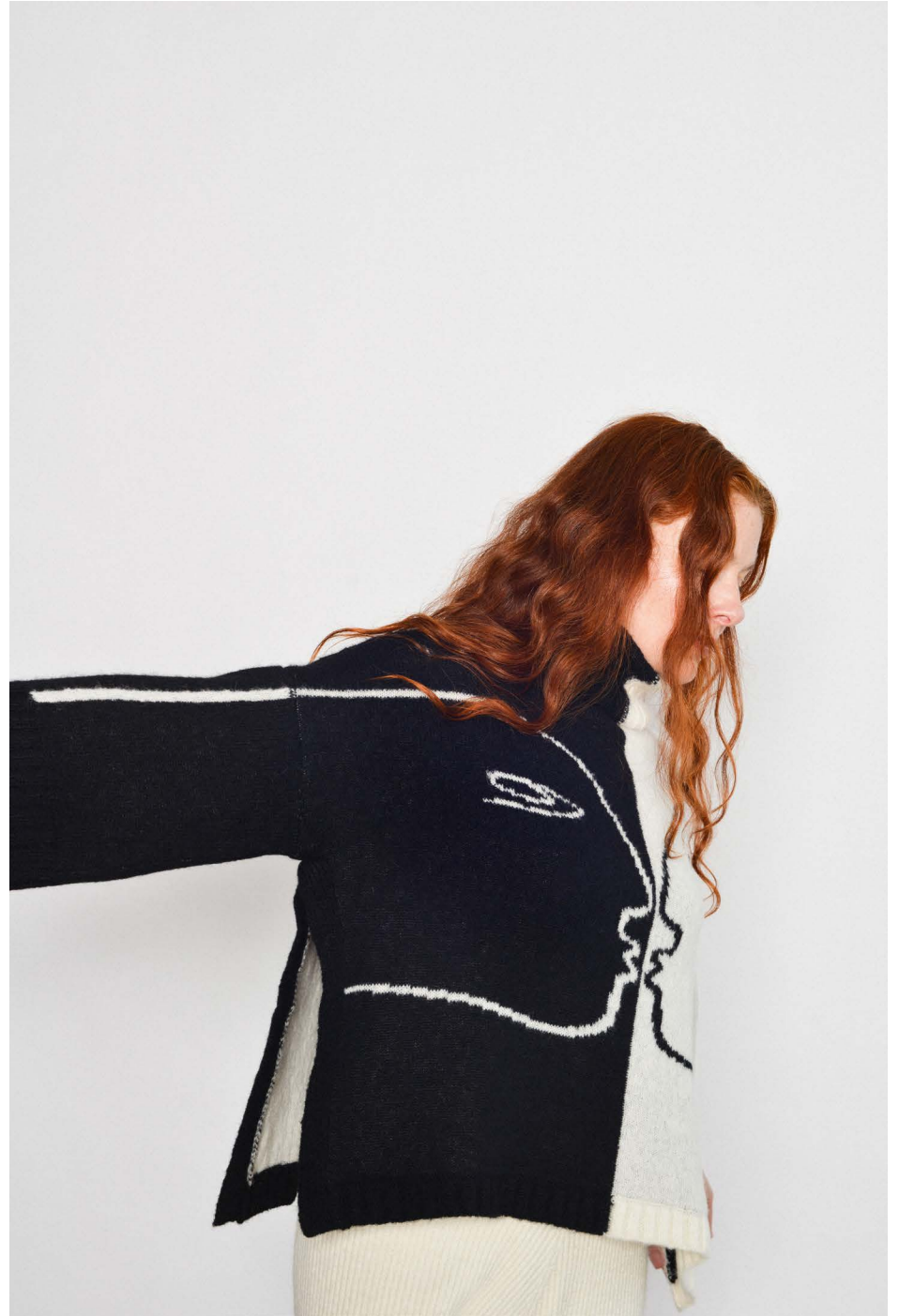
ALI SWEATER | ESPSP22-22 | LILAC (styled with woven pant)



BETHANY SWEATER | ESPSP22-22 | PALE CAMEL (styled with woven pant)

CARLA CARDI | ESPSP22-05 | IVORY & BLACK COMBO.
MARLA PANT | ESPSP22-31 | IVORY





LOVE SWEATER (ARTIST COLLAB W/ @KOKETIT) | ESPSP22-01 | IVORY & BLACK COMBO



HUMANITY SWEATER (ARTIST COLLAB W/ @KOKETIT)
ESPSP22-16 | IVORY & BLACK COMBO
HUMANITY SKIRT (ARTIST COLLAB W/ @KOKETIT)
ESPSP22-17 | IVORY & BLACK COMBO



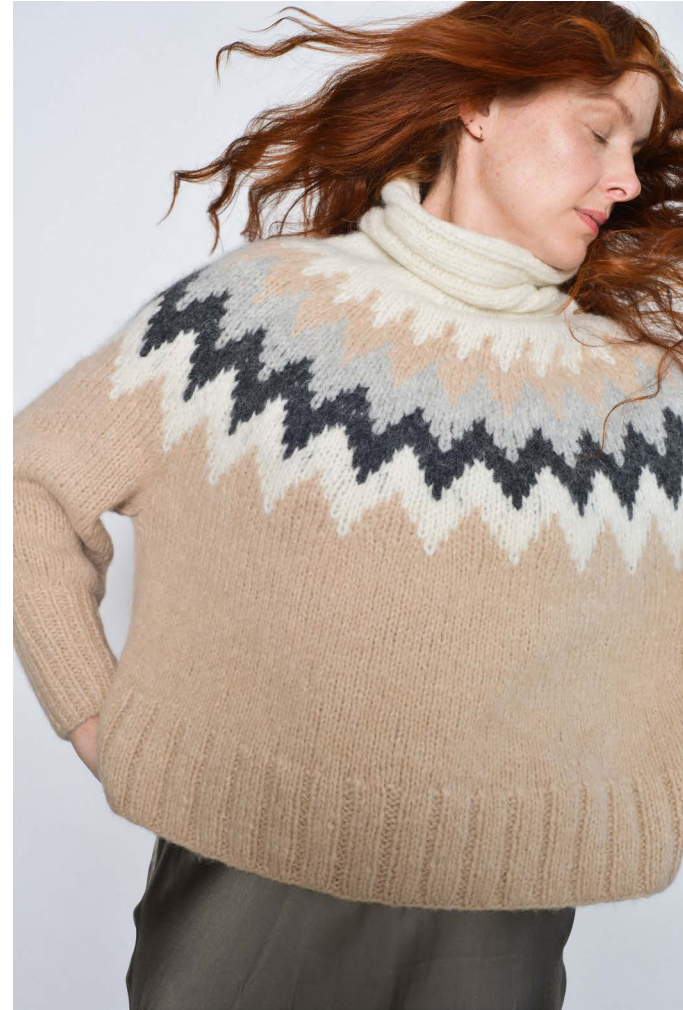
JOY SWEATER | ESPSP22-32 | MULTI COLOR (styled with woven pant)

JENN HOODIE | ESPSP22-07 | PALE GREY MELANGE
LEAH PANT | ESFW21-09 | PALE GREY MELANGE





AURORA SWEATER | ESPSP22-11 | CLOUD BLUE
MARLA PANT | ESPSP22-31 | CLOUD BLUE



MAGNEA SWEATER | ESPSP22-12 | PALE CAMEL COMBO (styled with woven slip dress)

Mila Sweater | ESPSP22-24 | Camel (styled with woven pant)





TESS SWEATER | ESPSP22-08 | POWDER BLUE (styled with woven slip dress)



SARA CARDI | ESPSP22-09 | CLARET (styled with woven pant)



JAMIE SWEATER | ESPSP22-19 | PALE CAMEL (styled with woven pant)



AURORA SWEATER | ESPSP22-11 | IVORY (layered over Leonie Dress)

ANA DRESS | ESPSP22-21 | ESPRESSO (layered over stylist's woven pant)





ZARIA SWEATER | ESPSP22-26 | IVORY W/ GRAPHITE BEADS



CORA CARDI | ESPSP22-23 | PALE GREY MELANGE W/ SILVER SEQUINS



ANNA SWEATER | ESPSP22-03 | IVORY
MARLA PANT | ESPSP22-31 | IVORY



NOVA SWEATER | ESPSP22-14 + MARLA PANT | ESPSP22-31 GRAPHITE MELANGE W/ LUREX

TESSA SWEATER | ESPSP22-25 | PALE GREY MELANGE
(styled with woven slip dress)





VALI SWEATER | ESPSP22-18 | IVORY W/ SILVER LUREX
(styled with woven pant)



LUELLA CARDI | ESPSP22-02 | BLACK (styled with woven pant)

SADIE SWEATER | ESPSP22-15 | IVORY W/ SILVER SEQUINS
(styled with woven pant)





ELEVEN SIX

CREDITS

MODEL | TAYLOR FOSTER
PHOTOGRAPHY + ART DIRECTION | JENNA SARACO of EITHER AND
VIDEOGRAPHY + ART DIRECTION | NICOLE STERIOVSKI of EITHER AND
HAIR/MAKE UP | JAS LEE ASHCRAFT
STYLIST | CATHERINE CARNEVALE of ELEVEN SIX
ASSISTING INTERN | SPENCER HAYES

For all sales and enquiries please contact
Goods and Services showroom
sales@goodsandservicesnyc.com

Press Enquiries: Mode PR
Info@modepublicrelations.com

www.eleven-six.co
info@eleven-six.co