

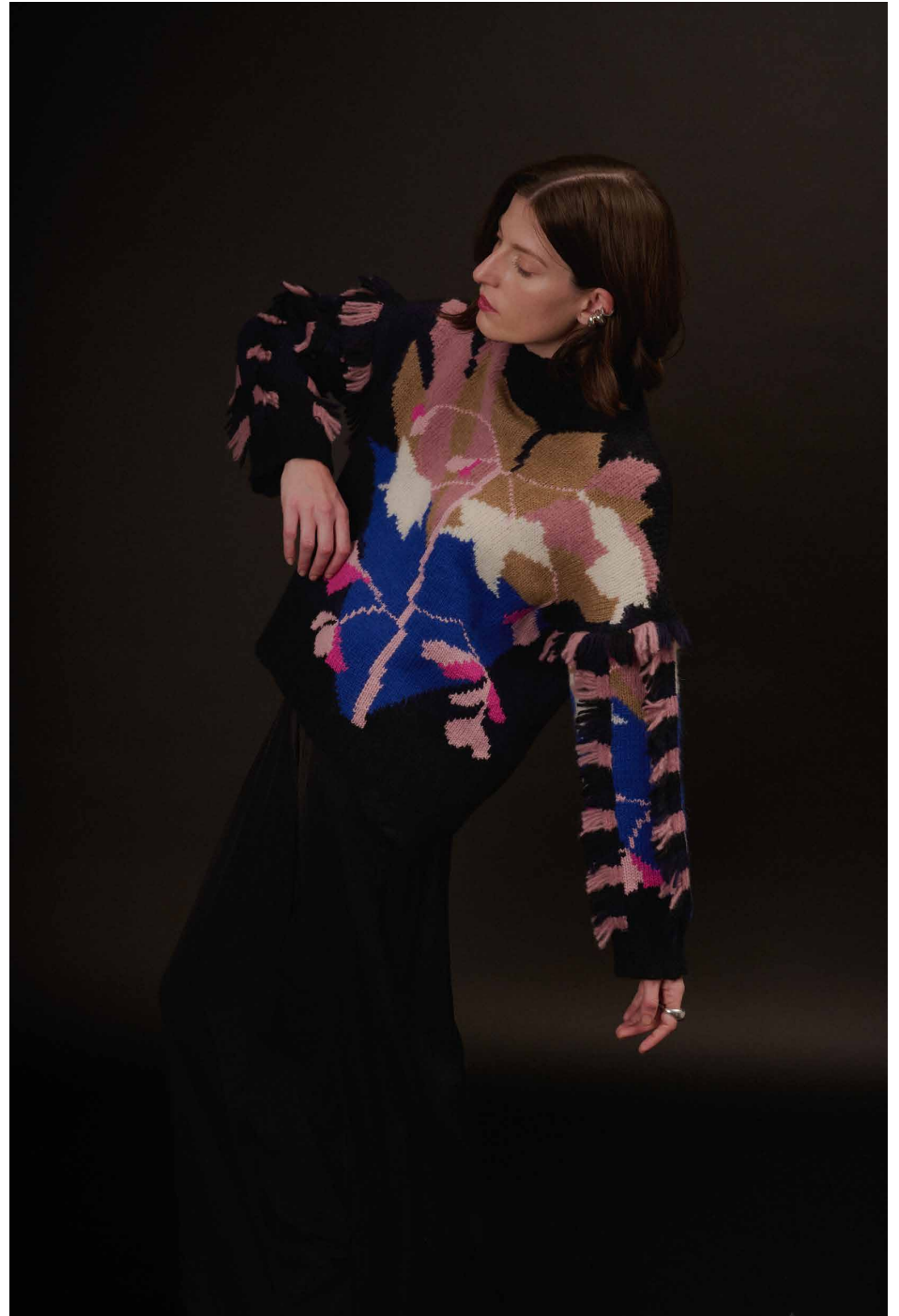
ELEVEN SIX



FALL 23



SAGE TANK | ESW23-10 | MINERAL PINK
MARISA SWEATER | ESW23-11 | MINERAL PINK
PIA TUBE SKIRT | ESW23-27 | MINERAL PINK



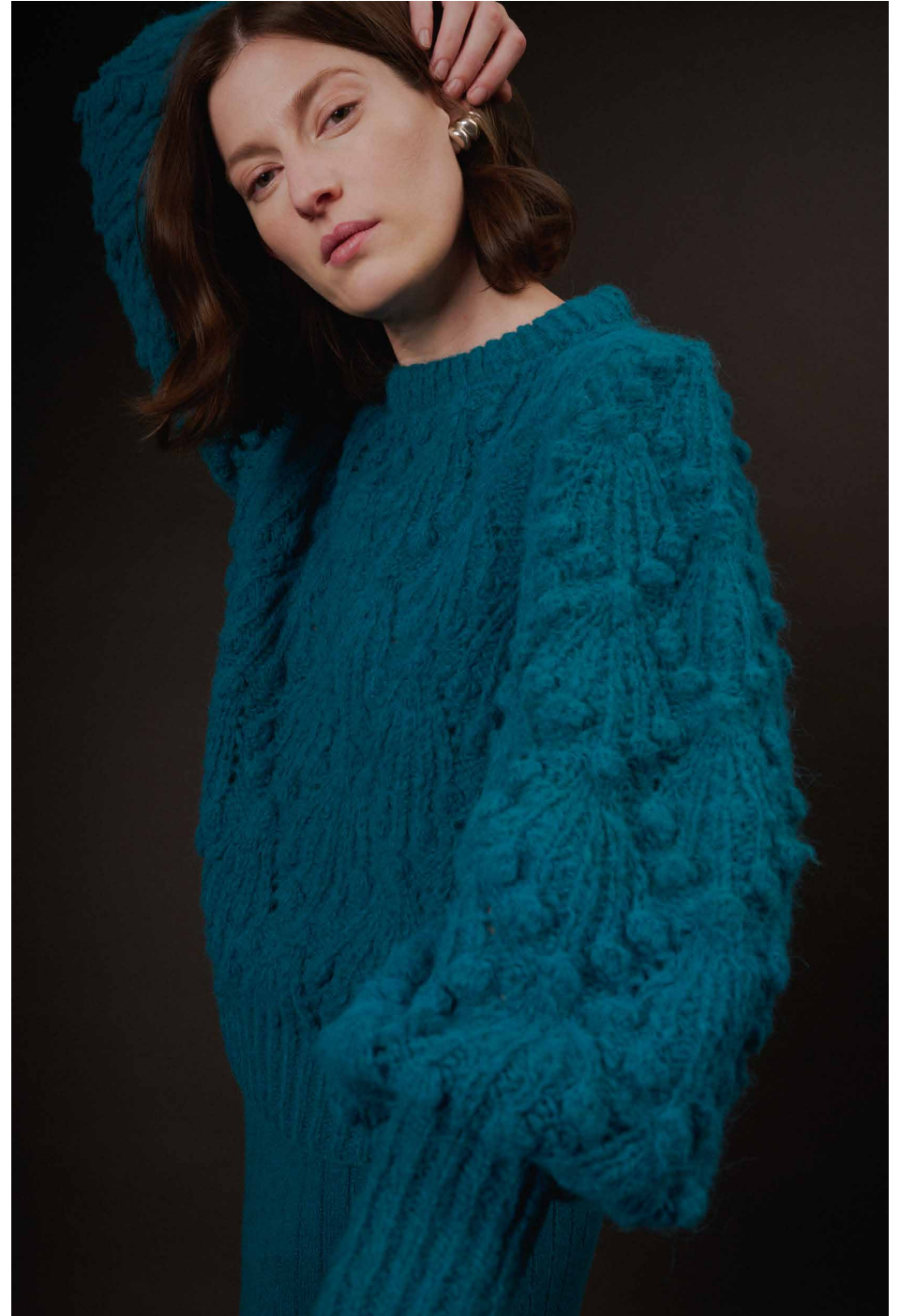
BAILEY SWEATER (w/ fringe) | ESFW23 03 | MULTI COLOR
Artist Collaboration with Gemma Bailey of @studio.bailey



KAYLN CARDI | ESFW23-12 | PALE CAMEL
w/ stylist's leather skirt



SARA CARDI | ESFW23-09 | COBALT BLUE
TESS SWEATER | ESFW23-08 | COBALT BLUE (draped over arms)
LEA SKIRT | ESFW23-26 | COBALT BLUE



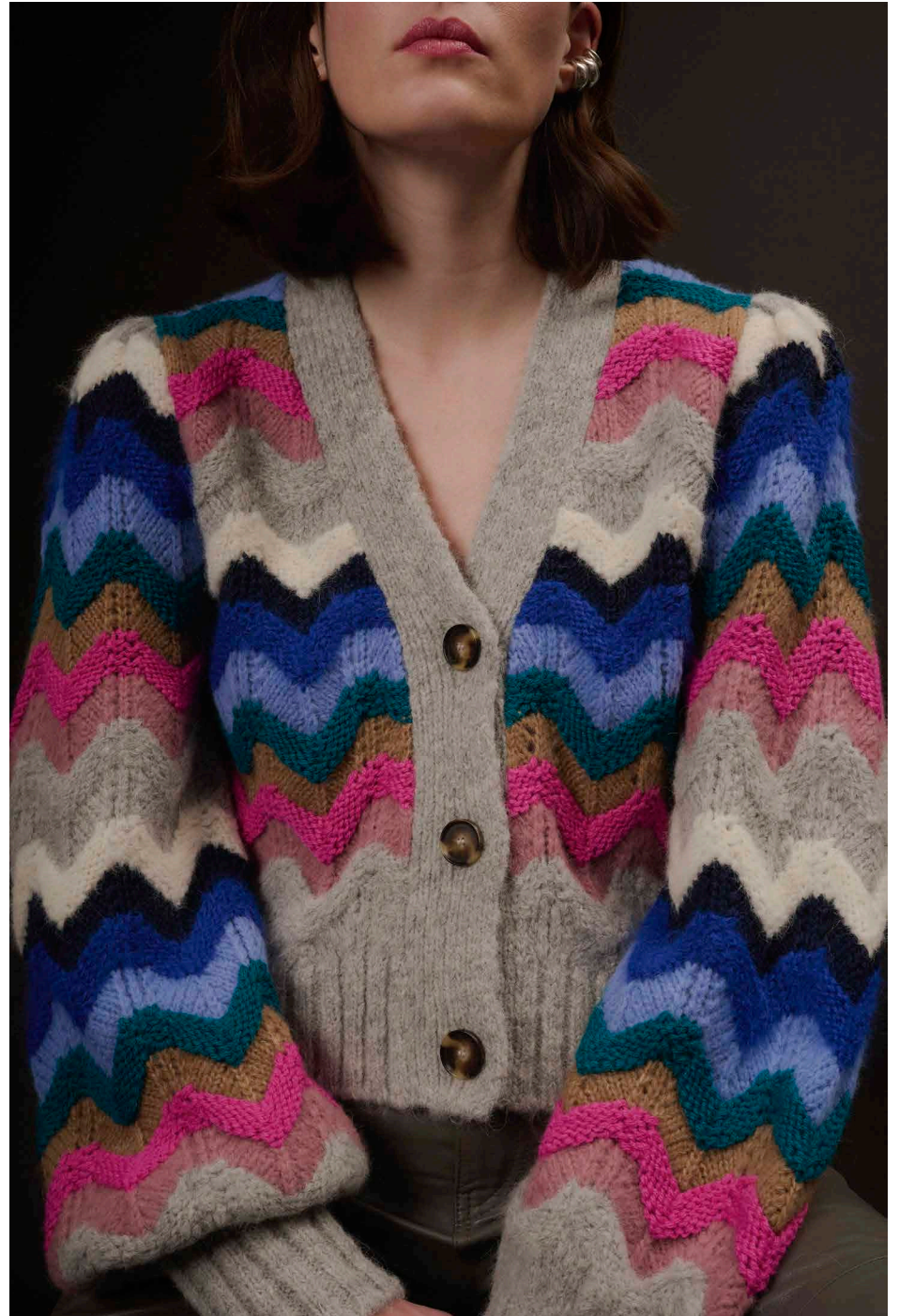
MARISA SWEATER | ESFW23.11 | TEAL
PIA TUBE SKIRT | ESFW23-27 | TEAL



LORA SWEATER DRESS | ESFW23-14 | IVORY



KAYLN CARDI | ESW23-12 | PERI BLUE
LEAH PANTS | ESW23-28 | PERI BLUE



CAMILA CARDI | ESFW23-04 | MULTI COLOR



CELIA COLOR BLOCK SWEATER | ESW23 02 | MULTI COLOR
w/ stylist's leather skirt



SAGE TANK | ESFW23-10 | CAMEL
LEAH PANTS | ESFW23-28 | CAMEL



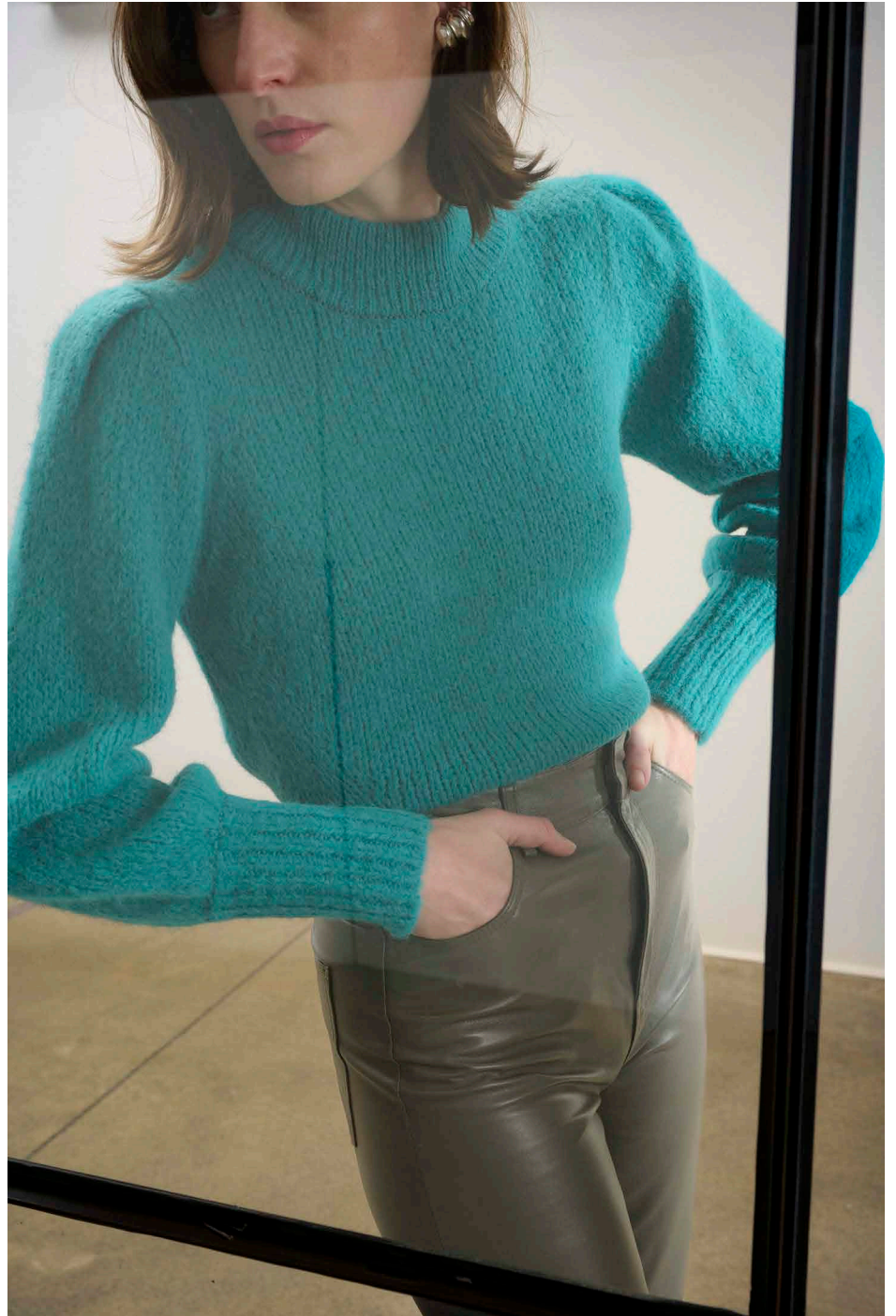
BRYNN SWEATER | ESFW23-19 | PALE CAMEL
SHAYA SKIRT | ESFW23-25 | PALE CAMEL



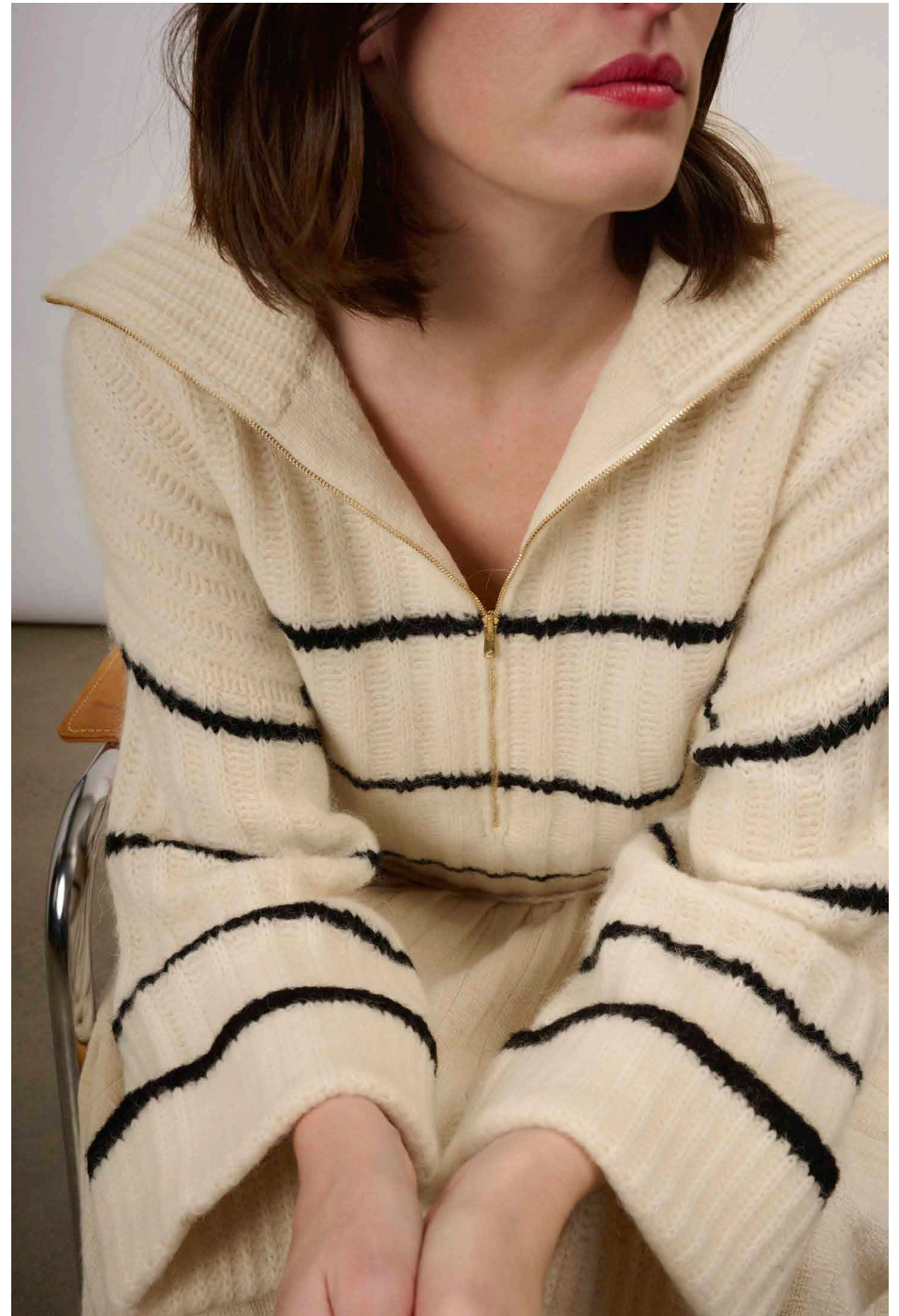
DELFINA CARDI WRAP | ESFW23-24 | MULTI COLOR
SONYA SWEATER | ESFW23-23 | MULTI COLOR (tied around neck)
w/ stylist's leather pants



SONYA SWEATER | ESFW23-23 | MULTI COLOR
w/ stylist's leather pants



KATE SWEATER | ESW23-17 | JADE
w/ stylist's leather pants



UMA STRIPE PONCHO | ESFW23-01A | IVORY & BLACK STRIPE
LEA SKIRT | ESFW23-26 | IVORY



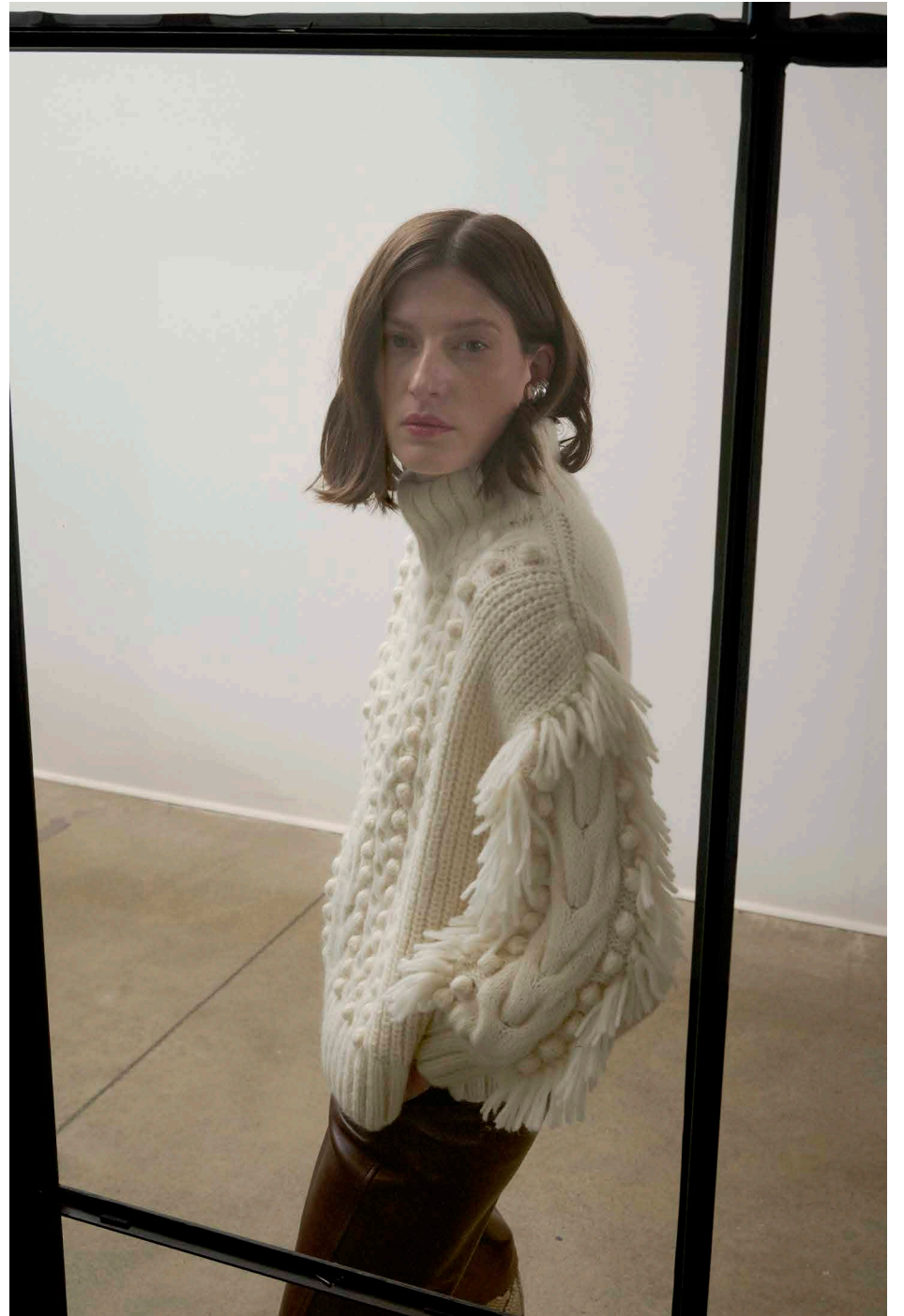
UMA PONCHO | ESW23-01 | NAVY
SHAYA SKIRT | ESW23-25 | NAVY



ALI SWEATER | ESW23-29 | COBALT BLUE
TESS SWEATER | ESW23-08 | COBALT BLUE (tied at waist)



FAITH SWEATER | ESFW23-21 | IVORY/NAVY COMBO
HOPE SKIRT | ESFW23-22 | IVORY/NAVY COMBO
Artist Collaboration with Ben Stubbington



LYLA SWEATER | ESFW23-16 |



HARPER CARDI | ESW23-05 | MULTI COLOR
w/ stylist's silk dress



BECCA CARDI | ESW23-06 | TAFFY PINK
w/ stylist's silk pant



MARA CARDI | ESFW23-18 | CAMEL
NYLA SWEATER | ESFW23-32 | CAMEL (draped behind)
w/ stylist's silk pant



JEMI SWEATER | ESFW23-31 | IVORY/PALE CAMEL COMBO
w/ stylist's leather pants



CARLY SWEATER | ESFW23-13 | IVORY
w/ stylist's silk dress



EDEN DRESS | ESFW23-07 | PALE CAMEL
KAYLN CARDI | ESFW23-12 | PALE CAMEL (draped on shoulder)
w/ stylist's silk pant



KEREN CARDI | ESFW23-30 | IVORY/PALE CAMEL COMBO
w/ stylist's silk pant



YASMIN SWEATER | ESW23-20 | BLACK
w/ stylist's silk pant



ATHENA CARDI | ESW23-15 | IVORY
w/ stylist's silk dress



ATHENA CARDI | ESFW23-15 | IVORY (back view)
w/ stylist's silk dress



CREDITS

CREATIVE DIRECTION + STYLING | CATHERINE CARNEVALE

PHOTOGRAPHY + ART DIRECTION | JENNA SARACO

MODEL | JENNAE Q

HAIR + MAKE UP | DORI SLIGH

ASSISTANT | MARIE DIPERRI

JEWELRY | LILA RICE

For all wholesale/sales and press enquiries please contact ELEVEN SIX
Info@eleven-six.co

www.eleven-six.co

info@eleven-six.co