

Zoom Flex Tent

Lightweight and simple, the Zoom Flex Tent features four fiberglass legs and a water-resistant printed canopy. The Zoom Flex™ Tent is ideal to use at festivals, fairs, sporting events and more where fast assembly is required.



features and benefits:

- Flexible fiberglass legs
- Quick and easy set up
- Max wind speed 15mph
- Includes carry bag
- Product can be recycled
- One year hardware warranty against manufacturer defects

dimensions:

Hardware	Graphic
Assembled unit: 103" w x 112" h x 103" d 2617mm(w) x 2845mm(h) x 2617mm(d)	Refer to related graphic template for more information.
Approximate weight (with graphic): 12 lbs / 6 kg	Six month warranty.
	Visit: https://www.tradeshowplus.com

Shipping

Packing case(s):
1 Box(es)

Shipping dimensions:
47" l x 7" h x 7" d
1194mm(l) x 178mm(h) x 178mm(d)

Approximate total shipping weight:
14 lbs / 7 kg

additional base options



*For best performance
drive the flag holder in
flush to the ground

additional information:

Graphic material: Outdoor flag

When included in a larger kit, a different packaging solution will be listed to accommodate all contents of the kit. Individual packaging no longer provided.

Max wind speed 15mph

2 person assembly recommended:



*See supplement for more information on bases

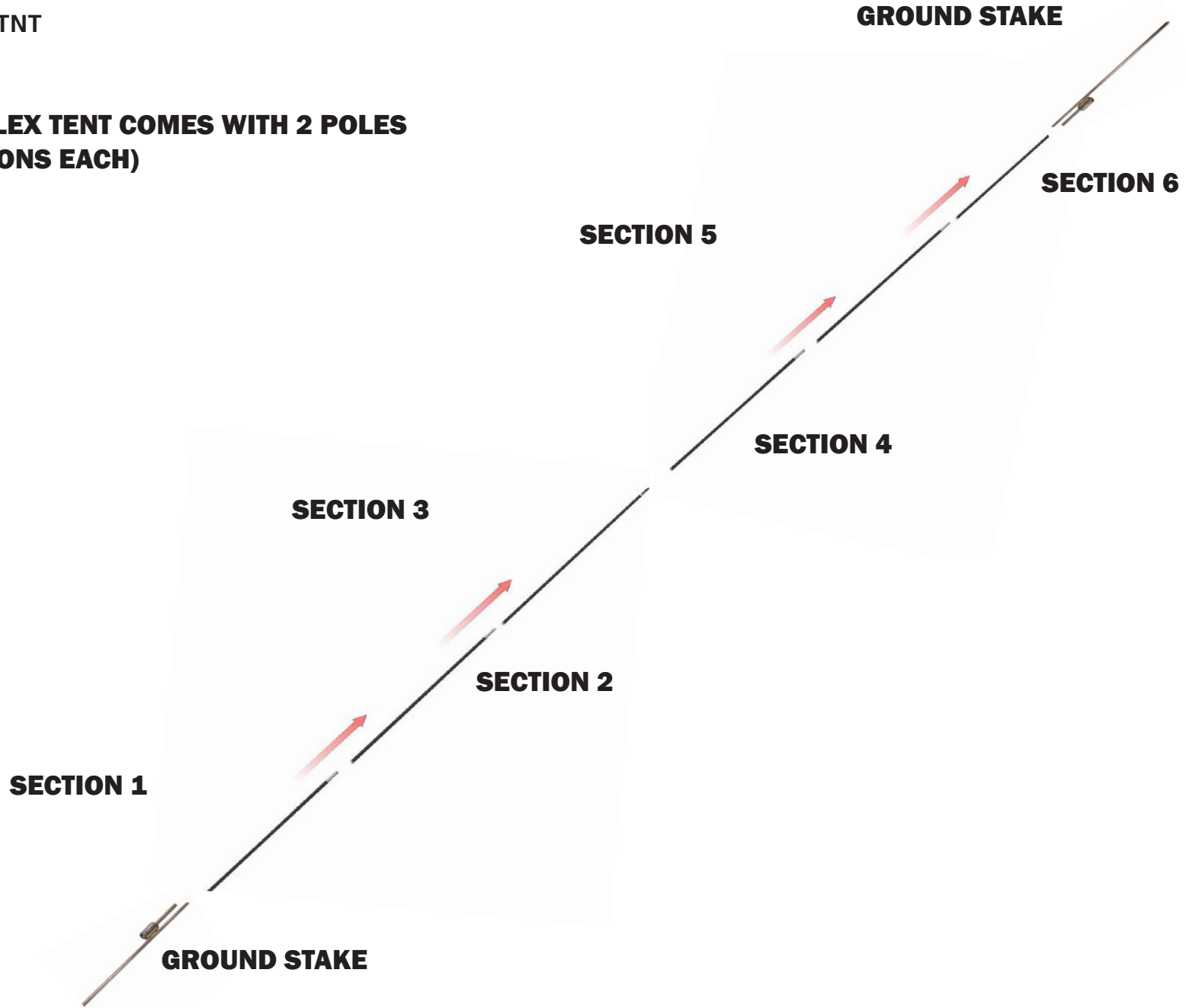
We are continually improving and modifying our product range and reserve the right to vary the specifications without prior notice. All dimensions and weights quoted are approximate and we accept no responsibility for variance. E&OE. See Graphic Templates for graphic bleed specifications.

Parts Diagram

ZOOM-FLX-TNT

GROUND STAKE

**ZOOM FLEX TENT COMES WITH 2 POLES
(6 SECTIONS EACH)**



SECTION 6

SECTION 5

SECTION 4

SECTION 3

SECTION 2

SECTION 1

GROUND STAKE

Kit Assembly

Step by Step

Step 1.

Gather the components to build both sets of complete poles.

Slide the flex pole into the base pole and lay them in an X-formation on the ground near the desired set up area.



Step 2.

Set ground stakes to their proper distances in desired set up area (recommended 9.5' square).



Step 3.

Align graphic so front is facing desired direction. Use attached straps to wrap around and fix graphic to pole intersection. Center as best as possible.



Kit Assembly

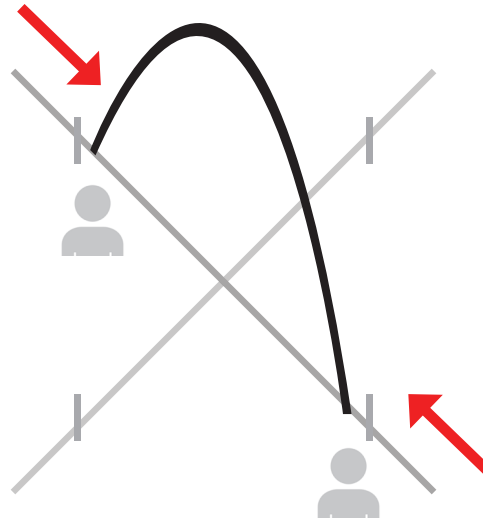
Step by Step

Step 4.

A. Hook the graphic onto two top hooks of a complete pole. Wrap straps around tube to hold in place.

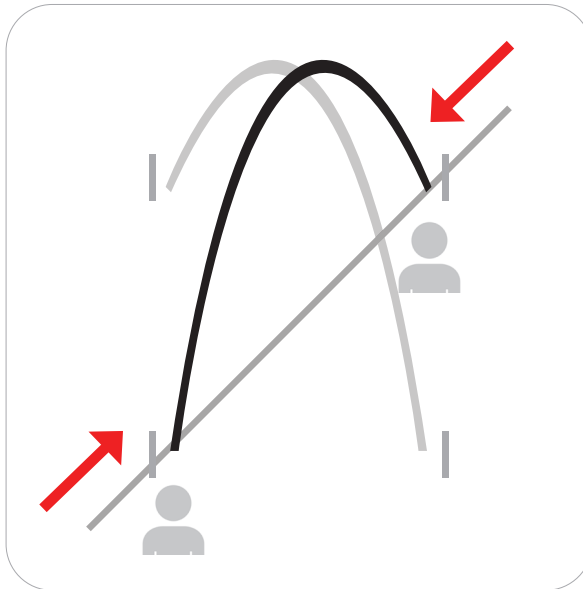
B. Begin to put up the tent by walking the two ends to their relevant ground stakes and placing in.

Two people are recommended for this step.



Step 5.

Complete putting up the tent by repeating Step 4. with the remaining complete pole.



Step 6.

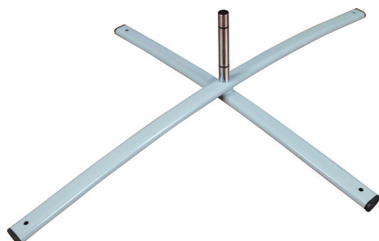
Wrap bungee ball around large base of each stake and bottom hook of each base pole to secure.

Set up is complete.



Zoom Flag Bases

Zoom Cross Base

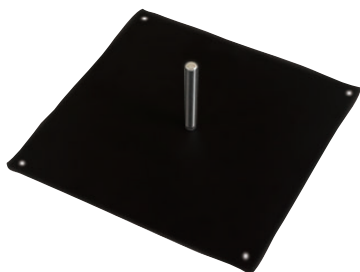


ZOOM-FLX-CB

*Water ring recommended

Assembled dimensions and weight:
31"W x 6.75"H x 24"D 4lbs
Shipping dimensions and weight:
32"L x 4"H x 2"D 5lbs

Zoom Square Steel Base



ZOOM-FLX-SQ

*Water ring recommended

Assembled dimensions and weight:
17.5"W x 5"H x 17.5"D 28lbs
Shipping dimensions and weight:
19"L x 18.5"H x 3.5"D 30lbs

Zoom Water Ring Base Support



ZOOM-FLX-WR

*Holds up to one gallon of liquid

Assembled dimensions and weight:
20.28"W x 5"H x 20.28"D 1lbs
Shipping dimensions and weight:
8"L x 4"H x 4"D 2lbs

Zoom Fillable Base



ZOOM-FLX-FB

*Holds up to 7 gallons of liquid

Assembled dimensions and weight:
19.7"W x 10.25"H x 19.7"D 7lbs
Shipping dimensions and weight:
22"L x 21"H x 10"D 9lbs

Zoom Ground Stake Base



ZOOM-FLX-STK

Ground Stake

Assembled dimensions and weight:
1.75"W x 2.5"H x 1.25"D 3lbs
Shipping dimensions and weight:
25"L x 2"H x 2"D 4lbs

Zoom Auger Base

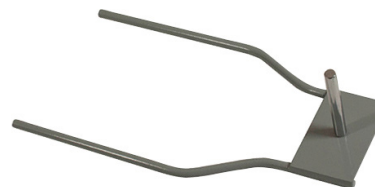


ZOOM-FLX-AGR

Screw in plastic base

Assembled dimensions and weight:
8.88"W x 21.75"H x 3.75"D 3lbs
Shipping dimensions and weight:
24"L x 6"H x 6"D 4lbs

Zoom Drive-Over Base



ZOOM-FLX-DO

Capable of being driven on or over

Assembled dimensions and weight:
23.62"W x 5.71"H x 7.87"D 14lbs
Shipping dimensions and weight:
24"L x 10"H x 3"D 16lbs

Zoom Stackable Base



ZOOM-FLX-STCK-BASE

*Holds up to 7 gallons of liquid

Assembled dimensions and weight:
25"W x 11"H x 25"D 8lbs
Shipping dimensions and weight:
27"L x 26"H x 8"D 10lbs