

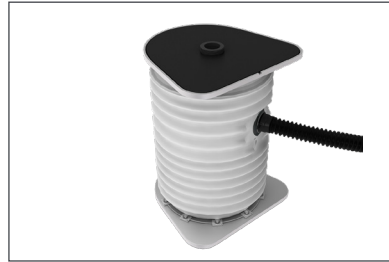
# Set Up Instructions

# WaveLine Air Bench XL

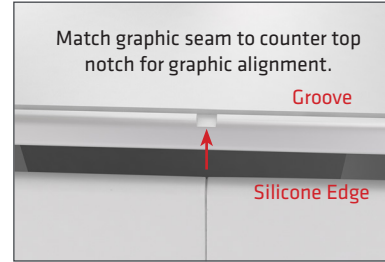
**Step 1:** Open bag and make sure inflate valve is facing up.



**Step 2:** Connect air pump to valve. While holding the top of bench board, pump up the inner core to about 80% capacity. Remove air pump.



**Step 3:** Graphic install. Match the seam of graphic with the notch in one side of bench. Push silicone edge of graphic into the groove on



the edge of the side board until securely fastened all around.

**Step 4:** Repeat this process to install graphic on other side.



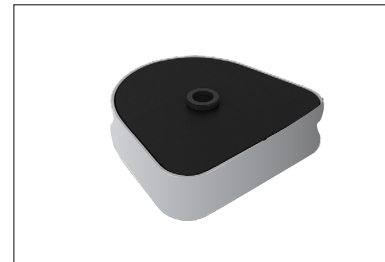
**Step 5:** Insert air pump and pump inner core until fabric graphic is tight. Note: Do not leave unattended and overfill.



**Step 6:** Complete.



**Step 7:** Repacking. Deflate the bench and leave the fabric graphic attached to the bench.



**WARNING:** To avoid breaking or damaging the top or bottom edge groove of your display, lower gently onto ground when assembling and disassembling. Do not drop counter or tip over any time.



**AIR LOSS THROUGH VALVE:** The most common reason for loss of air is the valve has not been properly closed or was accidentally opened with the pump nozzle during inflation. To close air valve press down on valve and turn left or right to closed position. To open air valve and deflate the counter, press down on valve and hold. To keep open, press down and turn valve left or right to open position.

# Dimensions

# WLBNC-120XL

