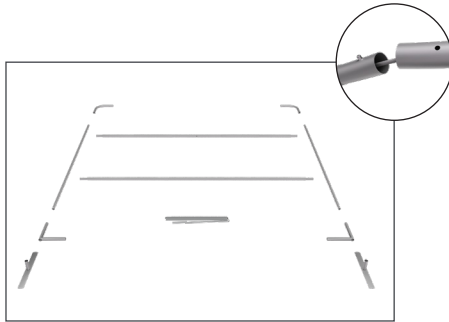


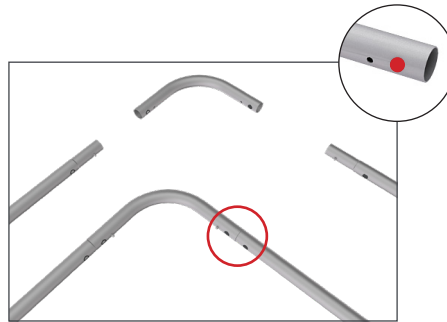
Set Up Instructions

WL-43F

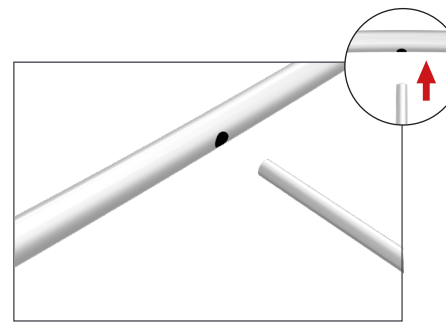
Step 1: Assemble straight poles by pressing and pushing together.



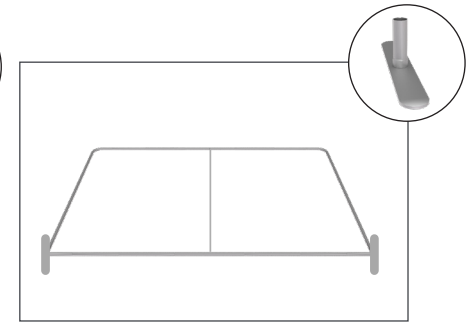
Step 2: Connect all corner sections to straight sections of the frame by matching shape symbols on pipes.



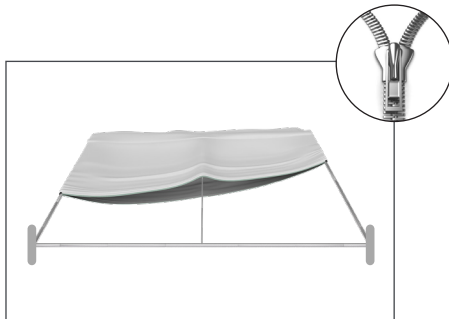
Step 3: Insert center support pole.



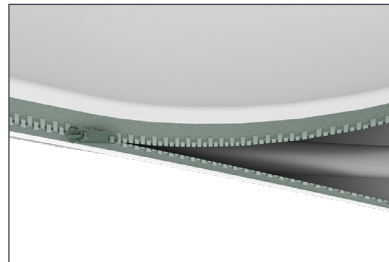
Step 4: Insert feet into base to complete assembled frame shown.



Step 5: Unzip print and lay image face up. Slide print onto frame like a pillow case.



Step 6: Zip the edge of graphic beyond the center point as shown to hold the center pole in place. Zip the remaining side and bottom to meet at the corner.



Step 7: Complete.



LIGHTS:
(OPTIONAL) Position as desired and tighten knob to hold in place.
WARNING! Over tightening may cause damage to fabric image.



Set Up Instructions

WLTAP

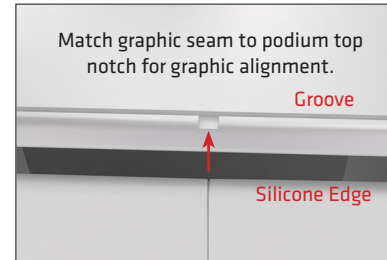
Step 1: Open bag and make sure inflate valve is facing up.



Step 2: Connect air pump to valve. While holding the top of podium board, pump up the inner core to about 80% capacity. Remove air pump.



Step 3: Graphic install. Match the seam of graphic with the notch in the top counter top. Push silicone edge of graphic into the groove



on top of the podium board until securely fastened all around.
Step 4: Repeat this process to install graphic on bottom of podium.



Step 5: Insert air pump and pump inner core until fabric graphic is tight. Note: Do not leave unattended and overfill.



Step 6: Connect Power Supply or optional Rechargeable Lithium-Ion Battery.



Step 7: Complete.
(if using the power cord, plug into outlet to light podium.)



Step 8: Repacking. Deflate the tower and leave the fabric graphic attached to the podium.



WARNING: To avoid breaking or damaging the top or bottom edge groove of your display, lower gently onto ground when assembling and disassembling. Do not drop podium or tip over any time.

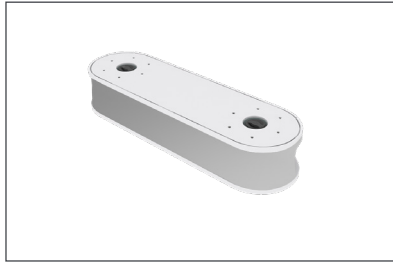


AIR LOSS THROUGH VALVE: The most common reason for loss of air is the valve has not been properly closed or was accidentally opened with the pump nozzle during inflation. To close air valve press down on valve and turn left or right to closed position. To open air valve and deflate the counter, press down on valve and hold. To keep open, press down and turn valve left or right to open position.

Set Up Instructions

ROUNDED **WLTAW**

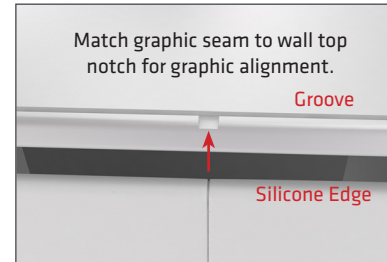
Step 1: Open bag and make sure inflate valve is facing up.



Step 2: Connect air pump to valve. While holding the top of wall board, pump up the inner core to about 80% capacity. Remove air pump.

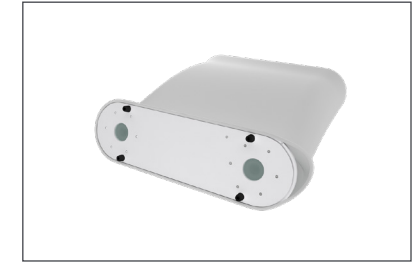


Step 3: Graphic install. Match the seam of graphic with the notch in the top wall top. Push silicone edge of graphic into the groove on top

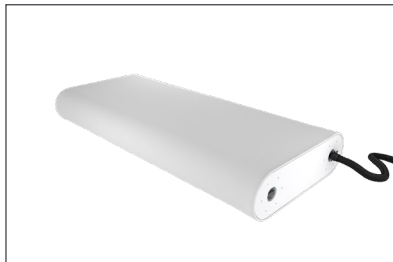


of the counter board until securely fastened all around.

Step 4: Repeat this process to install graphic on bottom of wall.



Step 5: Insert air pump and pump inner core until fabric graphic is tight. Note: Do not leave unattended and overfill.



Step 6: Connect Power Supply or optional Rechargeable Lithium-Ion Battery.



Step 7: Complete. (if using the power cord, plug into outlet to light wall.)



Step 8: Repacking. Deflate the tower and leave the fabric graphic attached to the wall.



WARNING: To avoid breaking or damaging the top or bottom edge groove of your display, lower gently onto ground when assembling and disassembling. Do not drop wall or tip over any time.



AIR LOSS THROUGH VALVE: The most common reason for loss of air is the valve has not been properly closed or was accidentally opened with the pump nozzle during inflation. To close air valve press down on valve and turn left or right to closed position. To open air valve and deflate the counter, press down on valve and hold. To keep open, press down and turn valve left or right to open position.