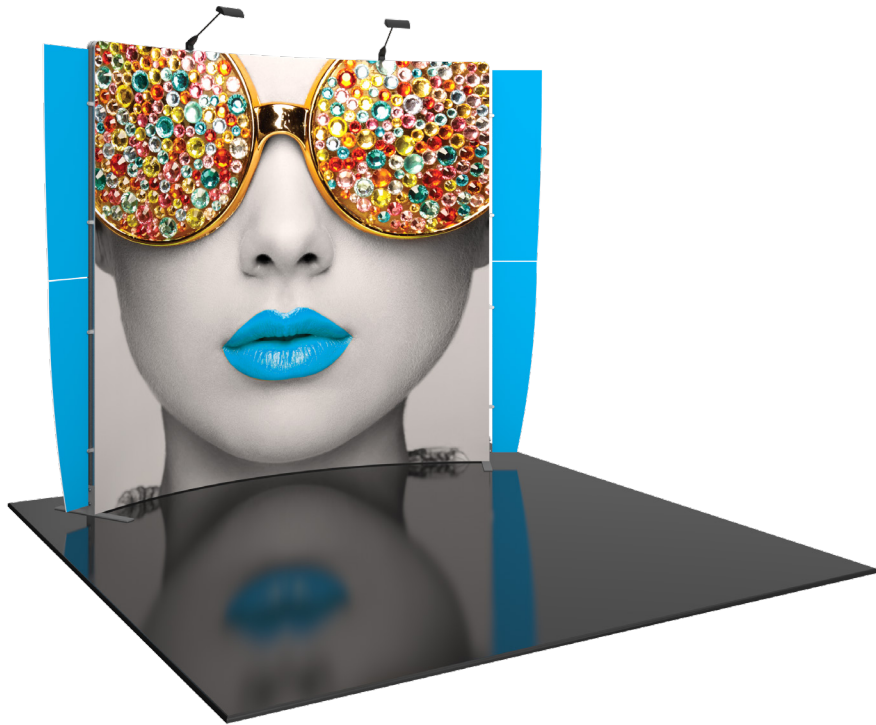


Vector Frame Master Kit 09

The innovative, contemporary and clean appearance of the Vector Frame™ line of exhibit kits will captivate your audience. Kits feature push-fit fabric graphics, easy-to-assemble extrusion frames, accent lighting, tables, literature accessories, monitor mounts and interior LED edge lighting where indicated.



features and benefits:

- 50mm silver extrusion frame
- Single-sided fabric graphics
- Kit includes: one frame, one dye-sublimated graphic, four accent wings, two LED lights, one counter and one wheeled molded case
- Lifetime hardware warranty against manufacturer defects

dimensions:

Hardware

Assembled Unit:
117" w x 102" h x 23" d
2972mm(w) x 2591mm(h) x 584mm(d)

Approximate weight:
52 lbs / 24 kg

Graphic

Refer to related graphic template for more information.

Visit:
<https://tradeshowplus.com>

Shipping

Packing case(s):
1 OCE

Shipping dimensions:
OCE: Expandable case length (l) may vary
40" - 66" l x 18" h x 18" d
1016mm-1677mm(l) x 458mm(h) x 458mm(d)

Approximate total shipping weight:
79 lbs / 36 kg

additional information:

Graphic material:
Dye-sublimation SEG push-fit fabric

Counter:
38.5" w x 40.5" h x 19.88" d
978mm(w) x 1029mm(h) x 505mm(d)

Counter holds max weight:
100 lbs / 46 kg

Lights Included:
Lumina 200



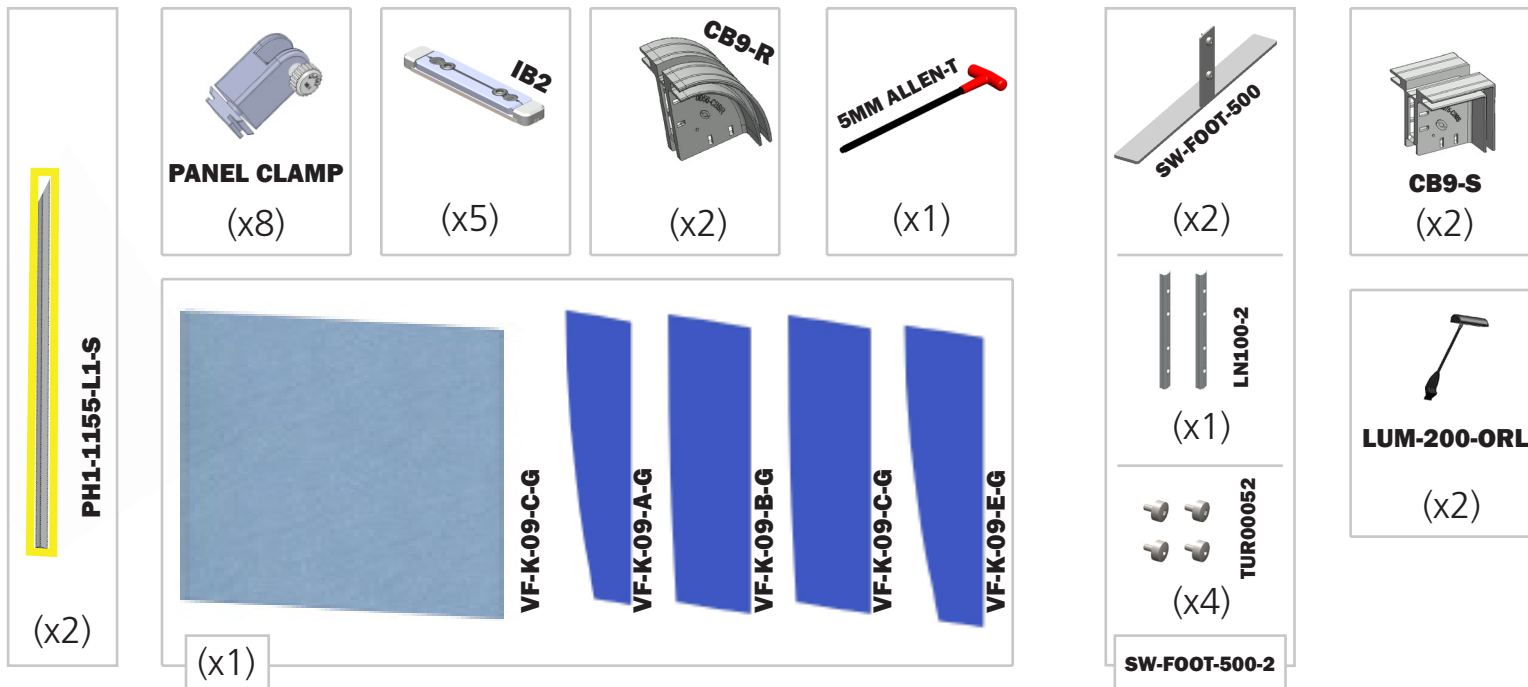
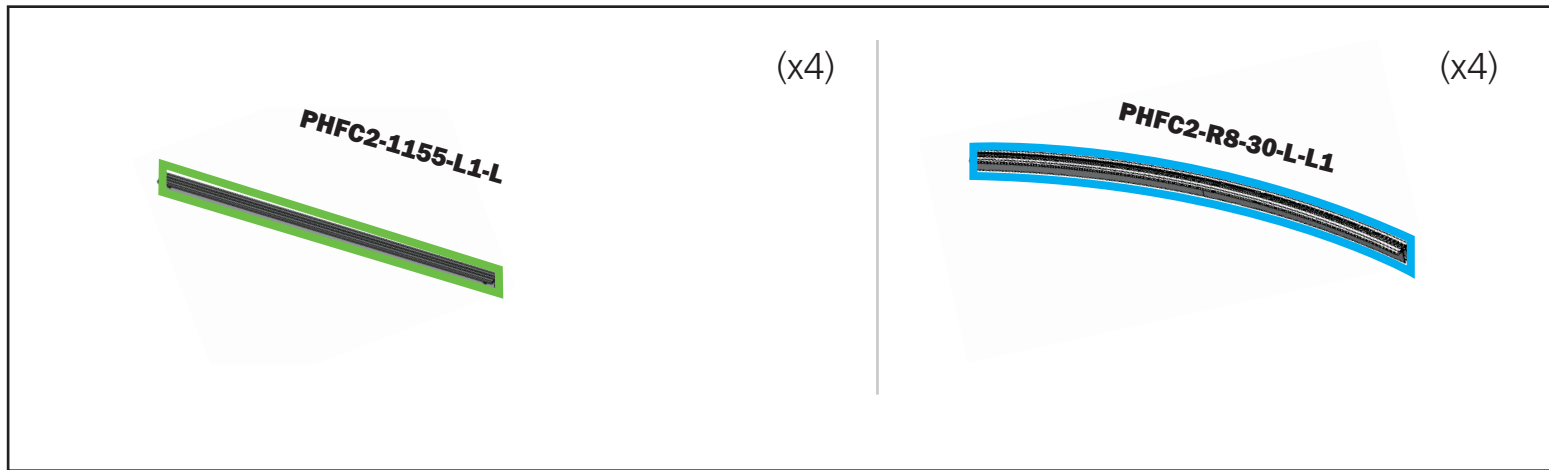
This product may include the following materials for recycle:
aluminum, select wood, fabric, cardboard, paper, steel, and plastics.

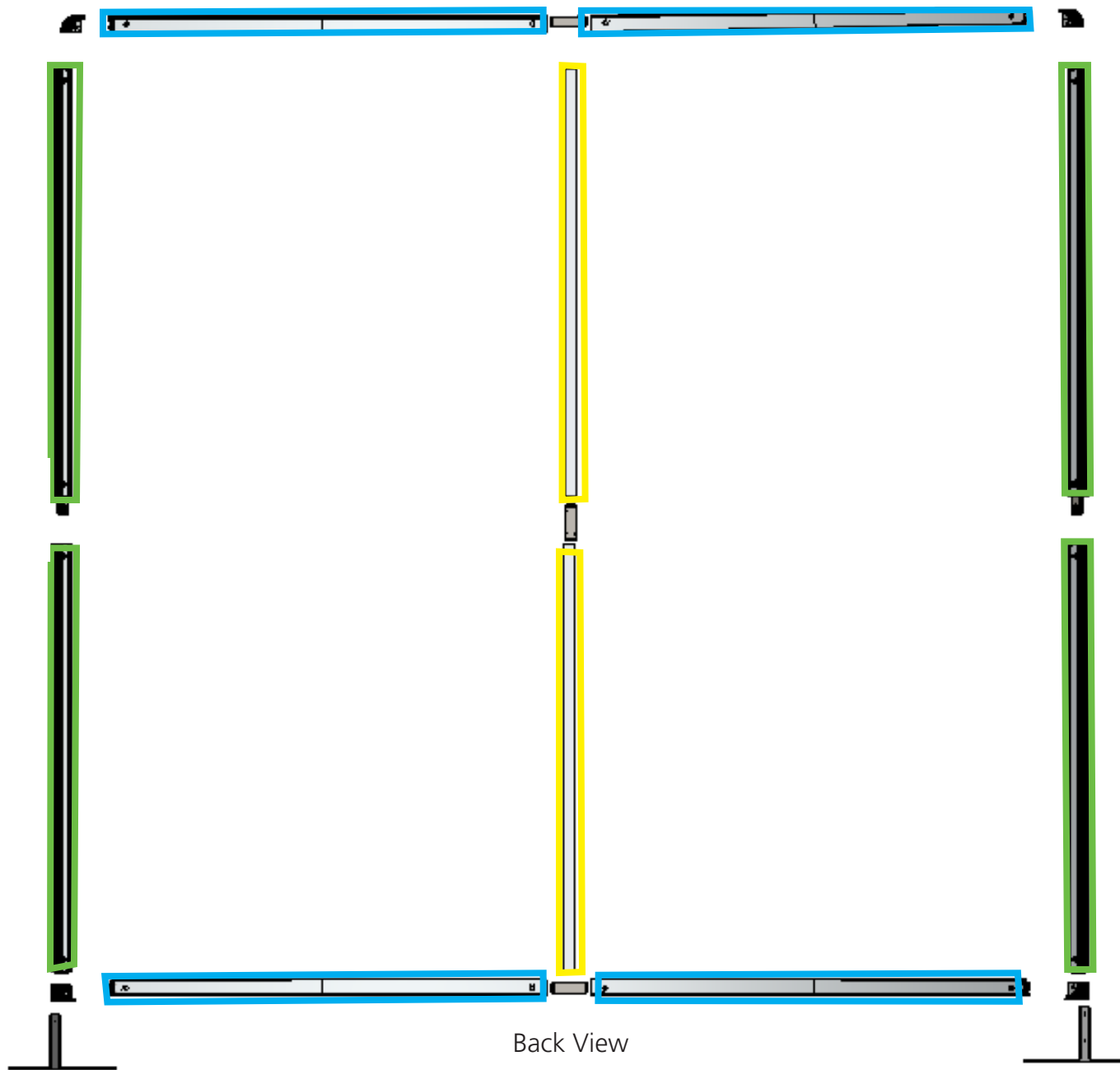
2 person assembly recommended:

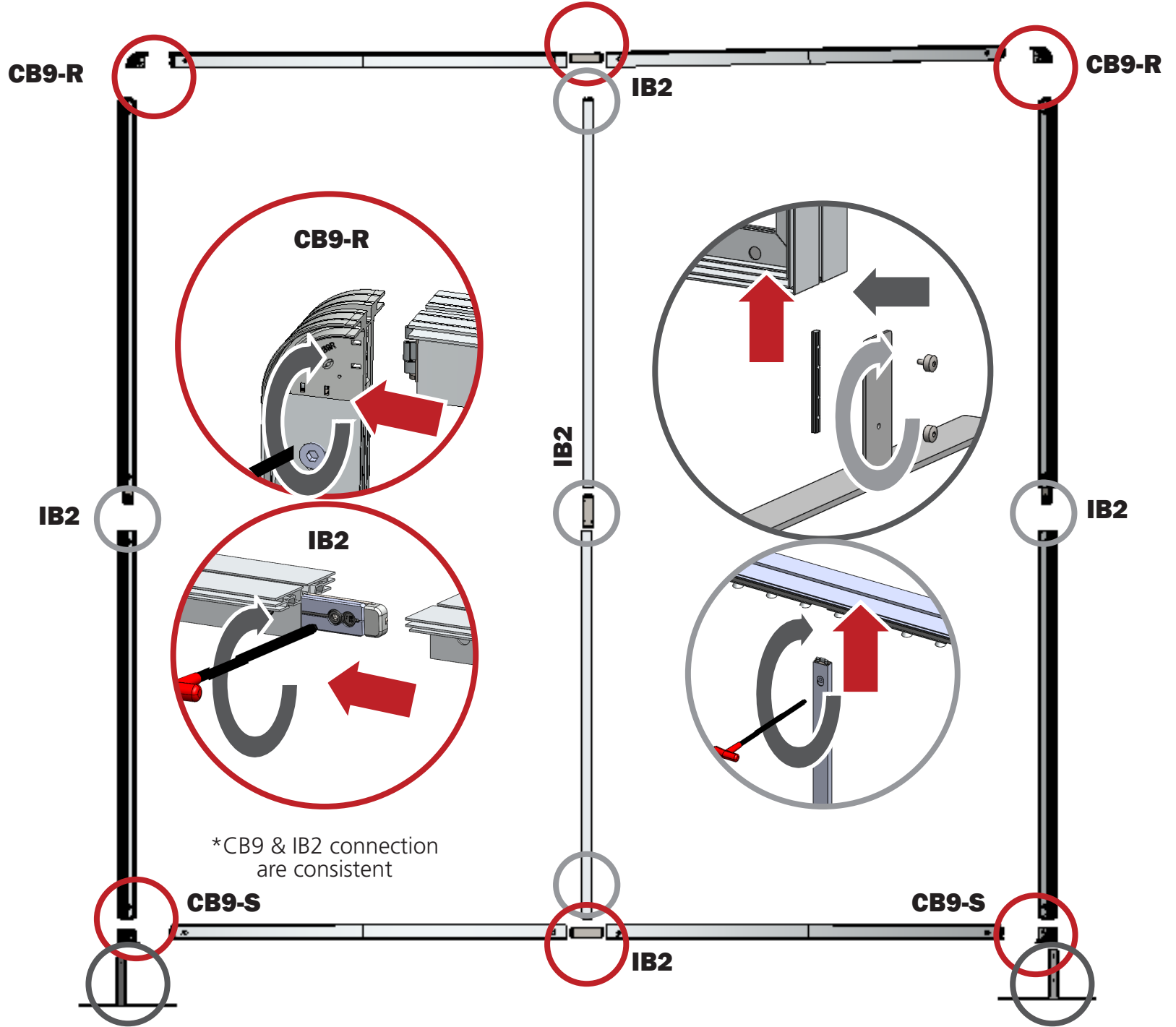


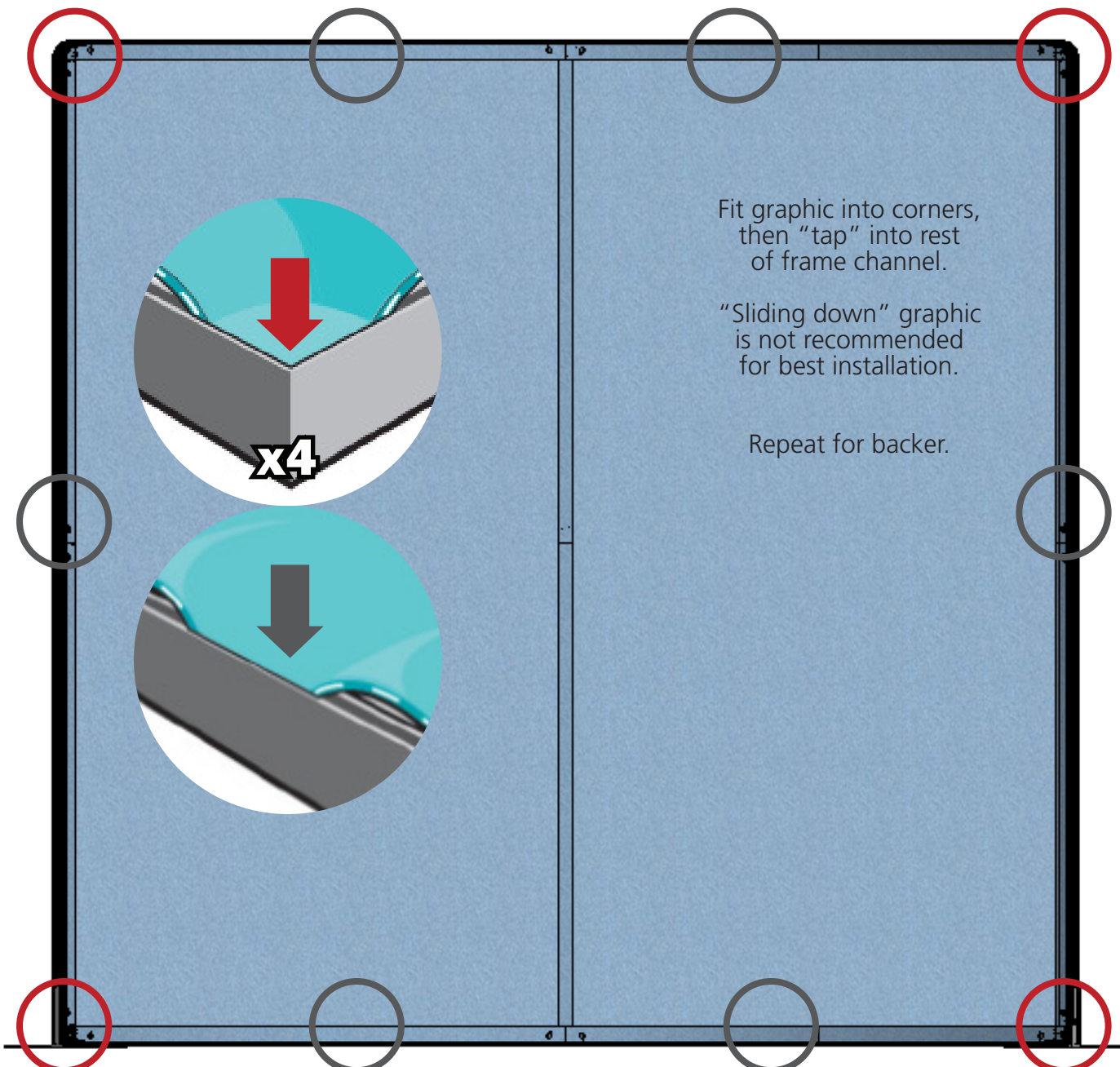
We are continually improving and modifying our product range and reserve the right to vary the specifications without prior notice. All dimensions and weights quoted are approximate and we accept no responsibility for variance. E&OE. See Graphic Templates for graphic bleed specifications.

*Not to scale





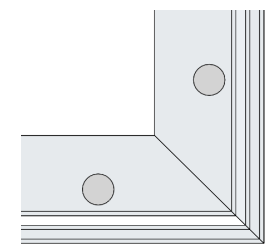
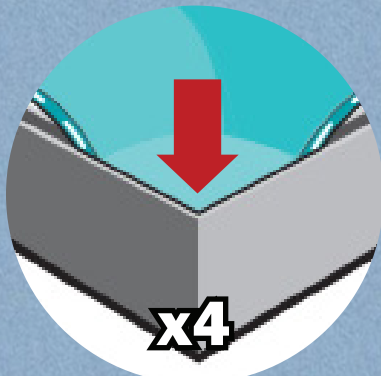




Fit graphic into corners,
then "tap" into rest
of frame channel.

"Sliding down" graphic
is not recommended
for best installation.

Repeat for backer.



Backer
2nd channel

Graphic
1st channel



