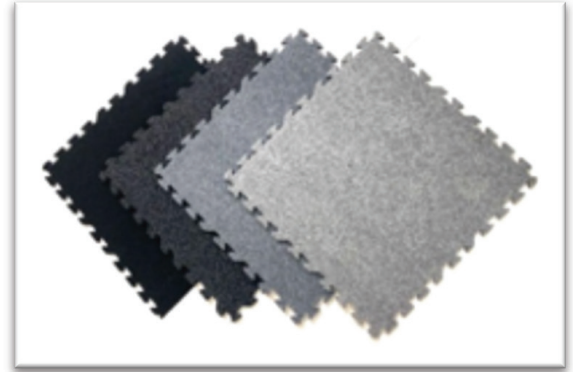


# Plush Comfort Carpet Interlocking Tiles

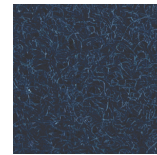
## Indoor / Outdoor

**Great for:** Staging, Trade Shows, Retail, Home, Home Office, Showrooms, Storytime, Craft/Job Fairs, Patio, Balcony, Camping

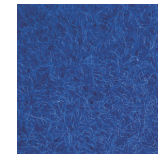
Plush Comfort Carpet Interlocking Tiles have been popular since we first released them over 20 years ago. The plush carpeted tiles are high-quality, far surpassing others on the market. With our patented interlocking design, tiles are secured in place, creating a virtually invisible seam. These high-density tiles have anti-fatigue properties, making them comfortable to stand on for long periods of time. Design any shape, make it any size, and add custom logo inlays. Optional features include beveled edges and wire management. Cases are also available to protect the portable tiles. These tiles can be used indoors and outdoors too.



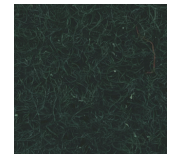
<b>COLOR OPTIONS</b>	Beige, Black, Brown, Red, Charcoal, Royal Blue, Garnet, Gray, Shadow, Steel Gray, Pewter, Hunter Green, Navy Blue
<b>TILE SIZES</b>	2'x2' and 2'x4'
<b>TILE THICKNESS</b>	5/8"
<b>2'x2' WEIGHT</b>	1.8 lbs.
<b>COST</b>	sq. ft.
<b>BEVELED EDGE</b>	per linear foot <i>(edges are not separate from tile)</i>
<b>ELECTRICAL CHANNELING</b> 1/2" W X 1/4" D	per 2'x2' tile per 2'x4' tile <i>(cross-channel cuts)</i>
<b>FLOOR CASES</b>	Box sizes: 2'x2'   2'x4'
	Hard Case Shipper with Wheels: 10'x10'   10'x20'   20'x20' <i>(10'x20' &amp; 20'x20' cases ship freight)</i>



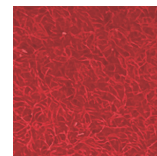
Navy Blue



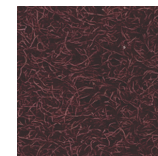
Royal Blue



Hunter Green



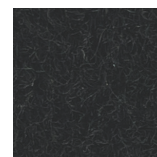
Red



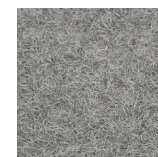
Garnet



Brown



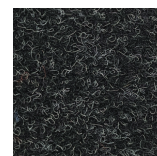
Black



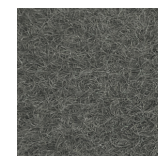
Gray



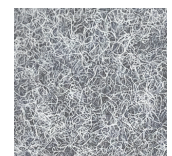
Beige



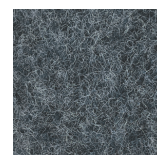
Charcoal



Pewter

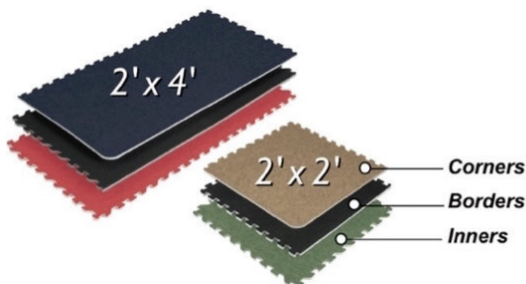


Shadow



Steel Gray

Not recommended for use in direct sunlight.



**Have a Question?**

Please contact [support@tradeshowplus.com](mailto:support@tradeshowplus.com)