

SWING OUTDOOR SIGN

The Swing Sign is a sleek and durable portable sign for both indoor and outdoor use. The Swing Sign offers a durable black steel tube frame with double ring mounting clips that keep graphics securely in place, while providing the ability to change graphics easily. The fillable water base ensures the sign stays in place securely. The attached wheels make for easy transport and mobility.



We are continually improving and modifying our product range and reserve the right to vary the specifications without prior notice. All dimensions and weights quoted are approximate and we accept no responsibility for variance. E&OE. See Graphic Templates for graphic bleed specifications.

6/15/2020

FEATURES & BENEFITS

- Double-sided graphic, printed on 6mm PVC
- Black, steel portable sign with integrated wheeled base
- Hollow plastic base can be filled with sand or water
- Double-ring mounting system holds graphic in place while allowing it to swing
- Fillable water base
- One year limited hardware warranty against manufacturer defects
- Attached wheels on base for easy transport
- Quick and easy set up
- Wind rating: 15mph max

DIMENSIONS

Assembled Unit:
24.5" w x 39" h x 15.75" d

Approximate Weight:
10 lbs

GRAPHICS

Total Finished Area:
20.625" w x 30.5" h

Total Graphic Area:
19.625" w x 29.5" h

Refer to related graphic template for more information.

Graphic Warranty:
Six month graphic warranty

SHIPPING

Hardware ships in 1 box:

Box 1 (base) : 40" l x 26" h x 5" d / 20lbs

ADDITIONAL INFO



1 person assembly recommended

Have a Question?

Please contact support@tradeshowplus.com
Visit: www.tradeshowplus.com

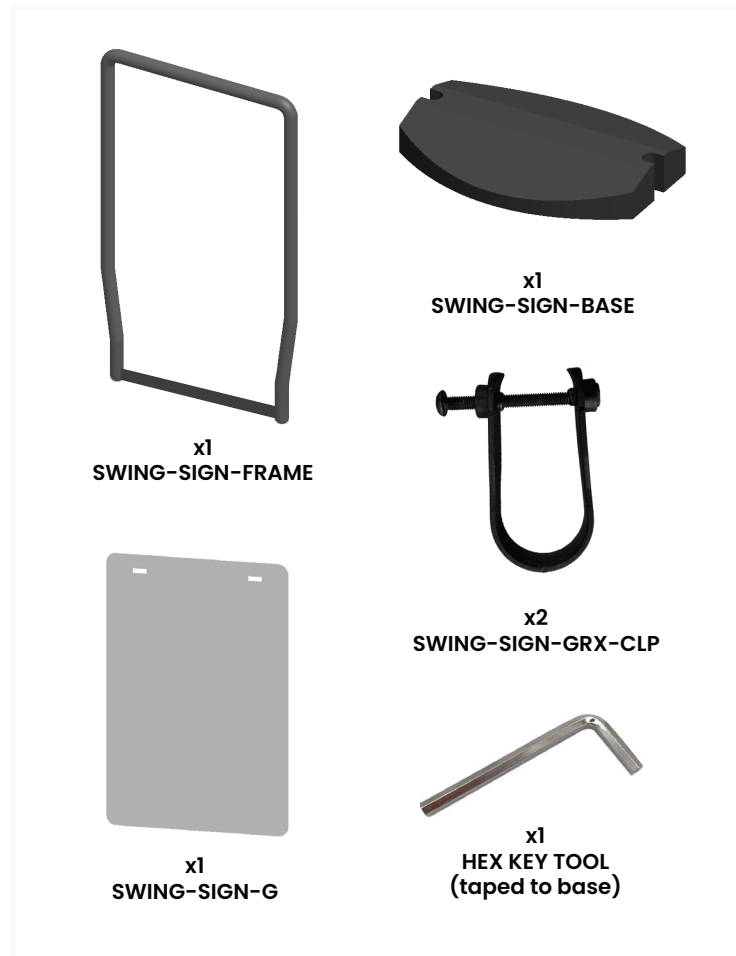


This product may include the following materials for recycle:
aluminum, select wood, fabric, cardboard, paper, steel, and plastics.

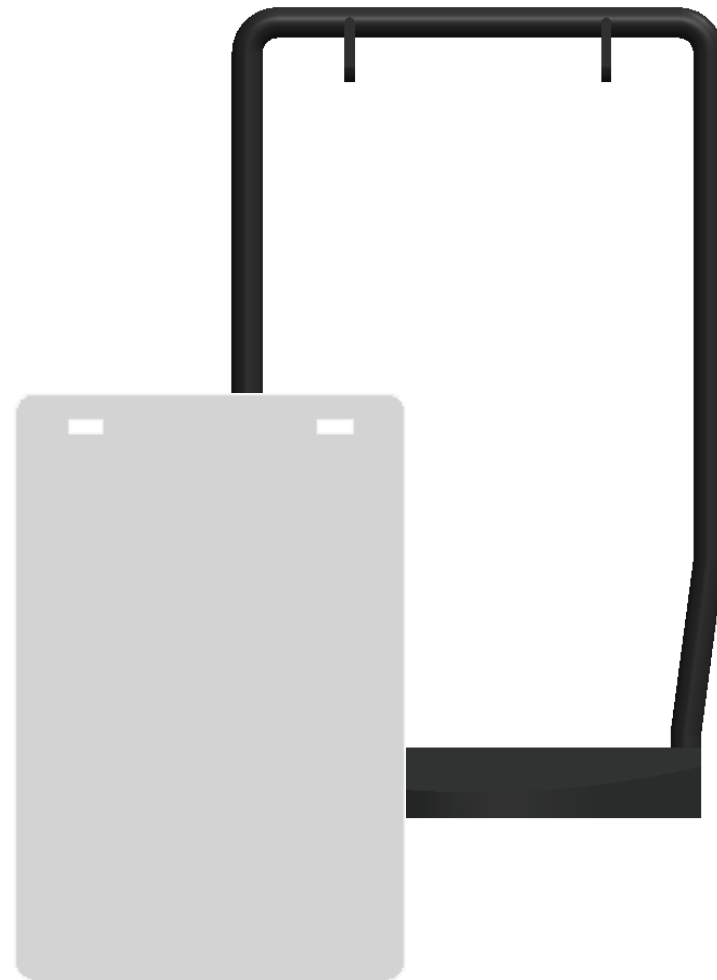
INCLUDED IN YOUR KIT

Have a Question?

Please contact support@tradeshowplus.com
Visit: www.tradeshowplus.com



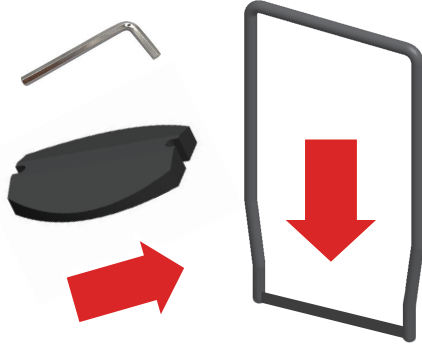
*Not to scale



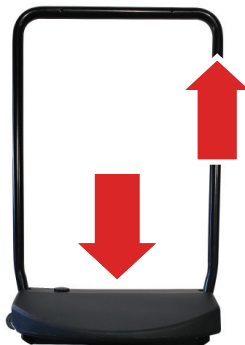
HARDWARE ASSEMBLY

Remove the included HEX KEY TOOL from the SWING-SIGN-BASE (taped to the bottom of the base).

Assemble the hardware by pivoting the the SWING-SIGN-BASE between the vertical tubes of the SWING-SIGN-FRAME and sliding down until it locks in place.



Note: You may need to pull the SWING-SIGN-FRAME up while pushing down on the SWING-SIGN-BASE to ensure a secure fit.



HOOK ATTACHMENT

Place the SWING-SIGN-GRX-CLIPs so the hole lines up with those of the SWING-SIGN-FRAME horizontal tube.

Push the SWING-SIGN-GRX-CLIP screws through the front side of the SWING-SIGN-FRAME. The head of the screws should face the same direction. Do not tighten the screws.



GRAPHIC ATTACHMENT

Push both SWING-SIGN-GRX-CLIP flaps through the SWING-SIGN-G graphic holes.

Once the graphic is in place, push the other side of the SWING-SIGN-GRX-CLIP onto the screws and tighten with the HEX KEY TOOL.



Note: For single-sided graphics, the front of the graphic should face the same side as the SWING-SIGN-GRX-CLIP screw heads.

FILL BASE

Fill the SWING-SIGN-BASE with water and tighten the cap.

